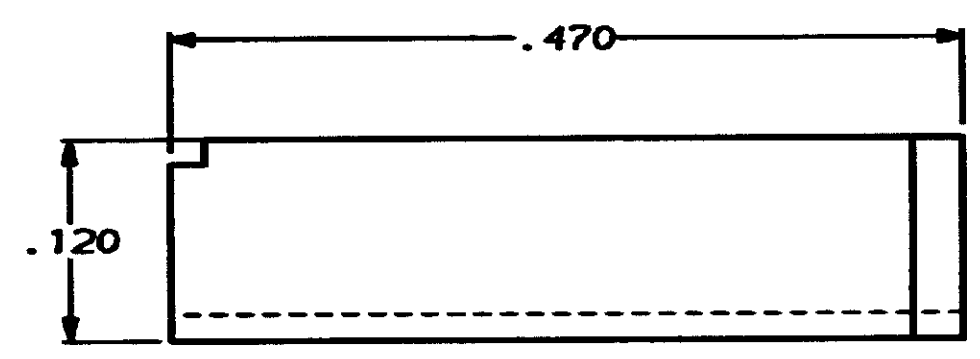
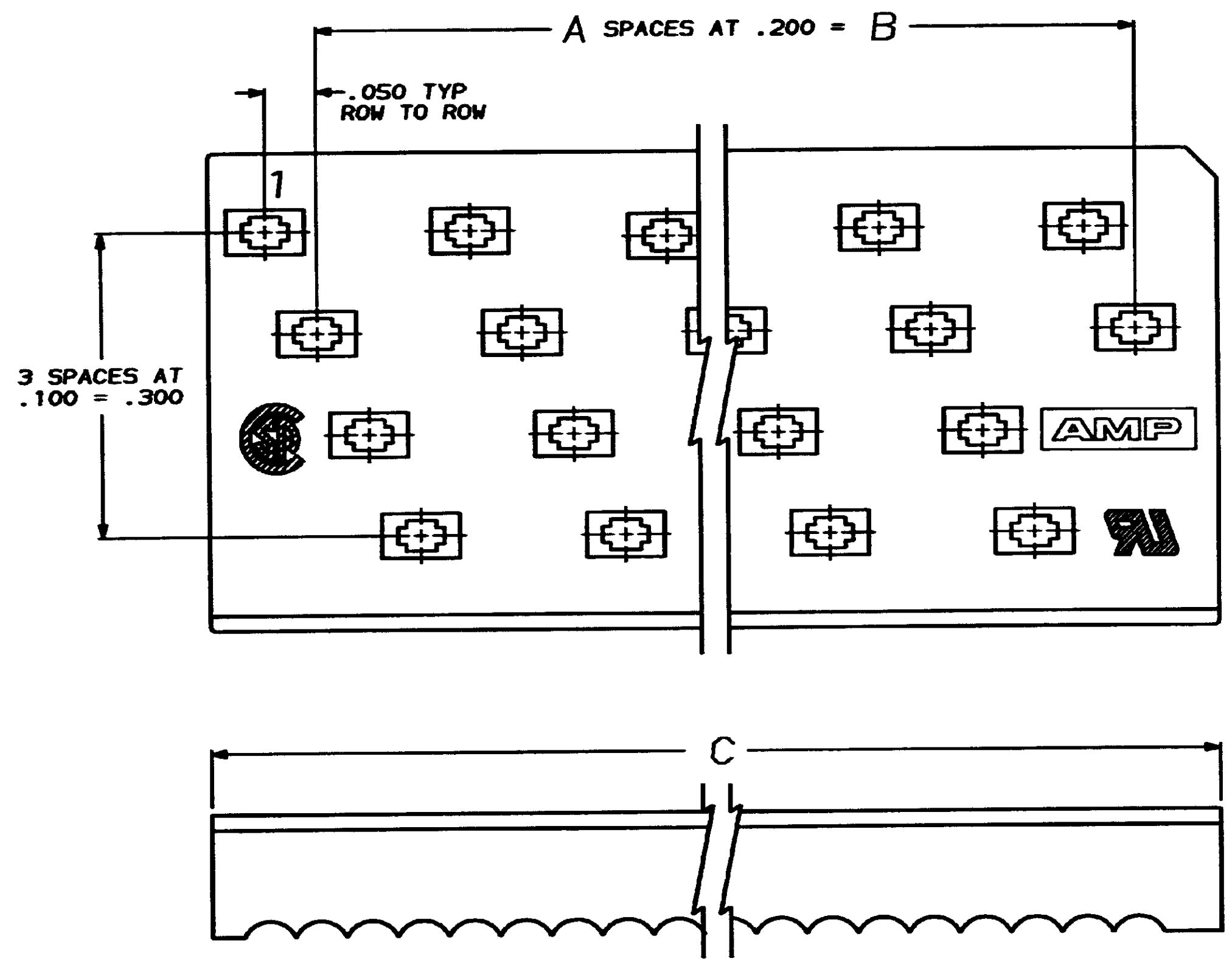


LOG	REV	DATE	BY	CHK	ZONE	LTR	DESCRIPTION	DATE	APPD
AR	39				0		RELEASED WAS 88-5130-6		
					A		REVSD/ECN CF-1706		



2.986	2.800	14	58	1-111359-3
2.786	2.600	13	54	1- -2
2.586	2.400	12	50	1- -1
2.386	2.200	11	46	1- -0
2.186	2.000	10	42	- -9
1.986	1.800	9	38	- -8
1.786	1.600	8	34	- -7
1.586	1.400	7	30	- -6
1.386	1.200	6	26	- -5
1.186	1.000	5	22	- -4
.986	.800	4	18	- -3
.786	.600	3	14	- -2
.586	.400	2	10	111359-1
C	B	A	NO OF POSN	PART NUMBER

DO NOT SCALE PRINT. UNLESS SPECIFIED DIMENSIONS IN INCHES TOLERANCES ON + 2 PLC DEC ± - 3 PLC DEC ± .005 ANGLES ± 0°30'	DR - <i>S. Weiden 2-25-88</i> CHK - <i>W. G. Lamber 2-25-88</i> APPD - <i>M. A. Vise 2-25-88</i> APPD - <i>D. Hoffman 2-25-88</i>	AMP INCORPORATED Harrisburg, Pa. 17105
MATERIAL FLAME RETARDANT, 94 V-0 RATED, GLASS FILLED POLYESTER, COLOR: BLACK	PRODUCT SPEC -	NAME COVER, PADDLEBOARD, SHORT END, AMP-LATCH
FINISH -	APPLICATION SPEC -	SIZE D
	WEIGHT -	FSCR NO 00779
		DRAWING NO 111359
		SCALE 10:1
		SHEET -OF-

CUSTOMER DRAWING

X-ON Electronics

Largest Supplier of Electrical and Electronic Components

Click to view similar products for [Headers & Wire Housings](#) category:

Click to view products by [TE Connectivity](#) manufacturer:

Other Similar products are found below :

[95000-104TRLF](#) [10135584-644402LF](#) [DF62W-EP2022PCA](#) [95000-106TRLF](#) [DF62W-2022SCA](#) [DF62W-EP2022PC](#) [2203348](#) [DF62W-2022SC](#) [1084018](#) [1029039](#) [1084017](#) [802-10-012-10-002000](#) [1112640](#) [1112639](#) [000-34000](#) [0009482033](#) [0009507031](#) [57102-S06-03LF](#) [57202-S52-04LF](#) [PCN6-15S-2.5E](#) [0039019024](#) [58102-G61-06LF](#) [582553-1](#) [0009508121](#) [0050291907](#) [018731A](#) [LY20-4P-DT1-P1E-BR](#) [02.125.8002.8](#) [60101931](#) [60598-1 \(Cut Strip\)](#) [M1625-3R/100](#) [61062-3](#) [61082-181009](#) [636-1427](#) [638009-1](#) [641938-9](#) [641991-4](#) [644168-1](#) [647662-1](#) [65039-019ELF](#) [65817-002LF](#) [65817-015LF](#) [65863-015LF](#) [66207-023LF](#) [67016-026LF](#) [67046-001LF](#) [67095-007LF](#) [68002-116](#) [68016-236H](#) [68648-049](#)