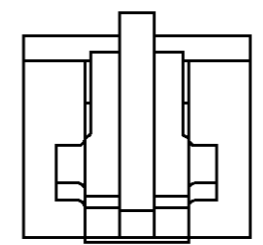
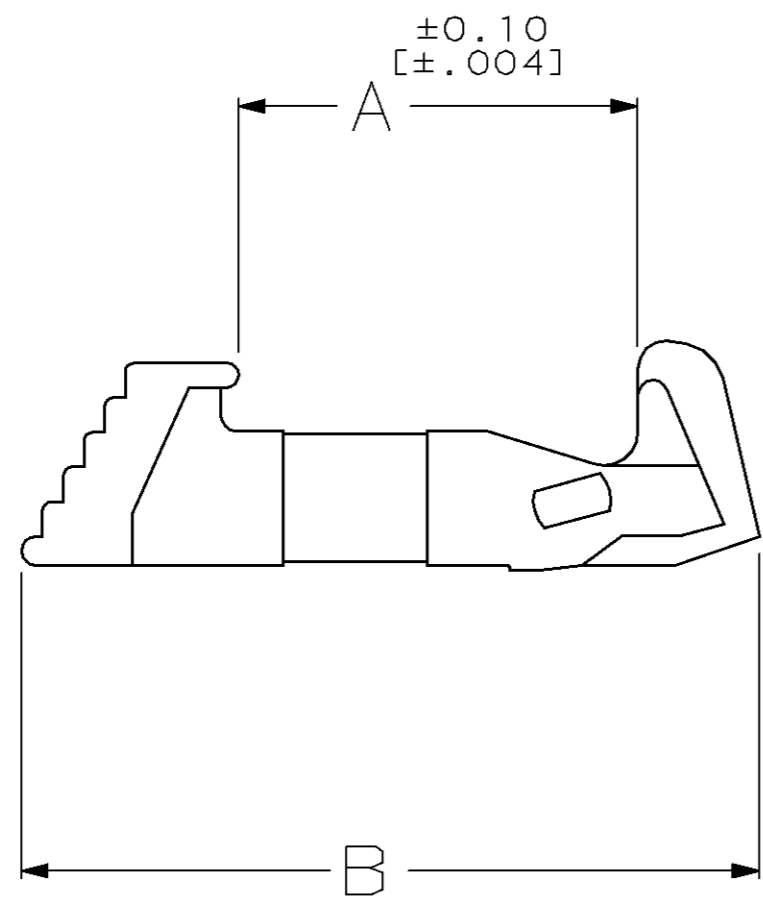
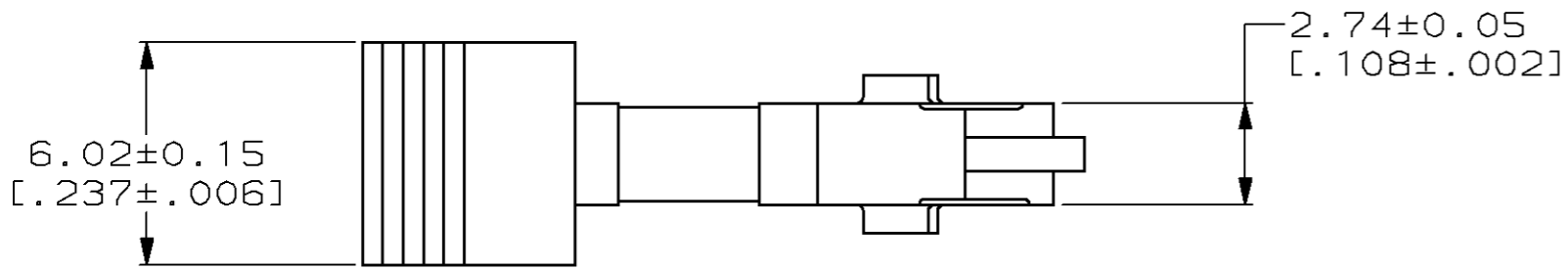


THIS DRAWING IS UNPUBLISHED. RELEASED FOR PUBLICATION, 19 .
 © COPYRIGHT 19 BY AMP INCORPORATED. ALL INTERNATIONAL RIGHTS RESERVED.

LOC	DIST	P	F	ZONE	LTR	DESCRIPTION	DATE	APPD
AR	35				O	RELEASED TO CUST	3-6-90	-
					A	REVISED PER ECN BD3979	5-14-90	FMH
					B	REVISED PER ECN BD4722	2-25-91	FMH
					C	REV PER ECN BD4931	04/04/91	FMH
					D	REV PER EC 0020-2-93	02/18/93	FMH
					E	OBS -4 EC 0020-460-95	07 NOV 95	DK
					F	SUPSD -2 PER EC 0020-377-95	17 JAN 96	DK
					G	REACTIVATE -2 PER EC 0020-637-96	10 JUN 96	DLK



21.56 [.849]	12.62 [.497]	$\triangle 1$ 111451-4
23.57 [.928]	14.63 [.576]	111451-3
20.98 [.826]	12.04 [.474]	111451-2
19.51 [.768]	10.57 [.416]	111451-1
B	A	PART NO

$\triangle 1$ OBSOLETE PART NUMBER.

DO NOT SCALE PRINT. UNLESS SPECIFIED DIMENSIONS IN mm [INCHES] TOLERANCES ON: 2 PLC DEC ± 0.13 [.005] 3 PLC DEC ± - ANGLES ± -		DR 3-6-90 C. OBERMAN	AMP INCORPORATED Harrisburg, Pa. 17105	
MATERIAL POLYESTER, BLACK		CHK 3-7-90 R. STONE		
FINISH -		APPD 3-7-90 F. M. HEINEY	NAME EJECTOR LATCH, UNIV PIN CONN, AMP-LATCH™	
		APPD 3-8-90 D. HOFFMAN	SIZE B	CAGE CODE 00779
		PRODUCT SPEC 108-1336	DRAWING NO 111451	
		APPLICATION SPEC 114-7011	SCALE 5:1	SHEET 1 OF 1
		WEIGHT -		

X-ON Electronics

Largest Supplier of Electrical and Electronic Components

Click to view similar products for [Headers & Wire Housings](#) category:

Click to view products by [TE Connectivity](#) manufacturer:

Other Similar products are found below :

[892-18-020-10-001101](#) [58102-G61-06LF](#) [582553-1](#) [0009485154](#) [009176003701906](#) [0050291907](#) [LY20-4P-DT1-P1E-BR](#) [02.125.8002.8](#)
[609-3404](#) [61062-3](#) [61082-181009](#) [622-3653LF](#) [63453-116](#) [636-1030](#) [636-1427](#) [636-3427](#) [636-4007](#) [641938-9](#) [641991-4](#) [644827-2](#) [65817-](#)
[010LF](#) [65817-015LF](#) [65863-015LF](#) [66207-023LF](#) [67095-007LF](#) [67601157](#) [68645-018](#) [68648-049](#) [70.362.1628.0](#) [70-4210](#) [70-4226B](#) [70-](#)
[4853B](#) [707-5020](#) [707-5028](#) [71.350.2428.0](#) [71918-208LF](#) [71961-016LF](#) [733-134](#) [733-162](#) [754199-000](#) [760-3052](#) [787-8014-00](#) [79531-3000](#)
[FCN-360C032-B](#) [FCN-367T-T012/H](#) [FCN-723D010/2](#) [80.063.4001.1](#) [800-90-001-10-001000](#) [800-90-010-10-002000](#) [801-43-002-10-013000](#)