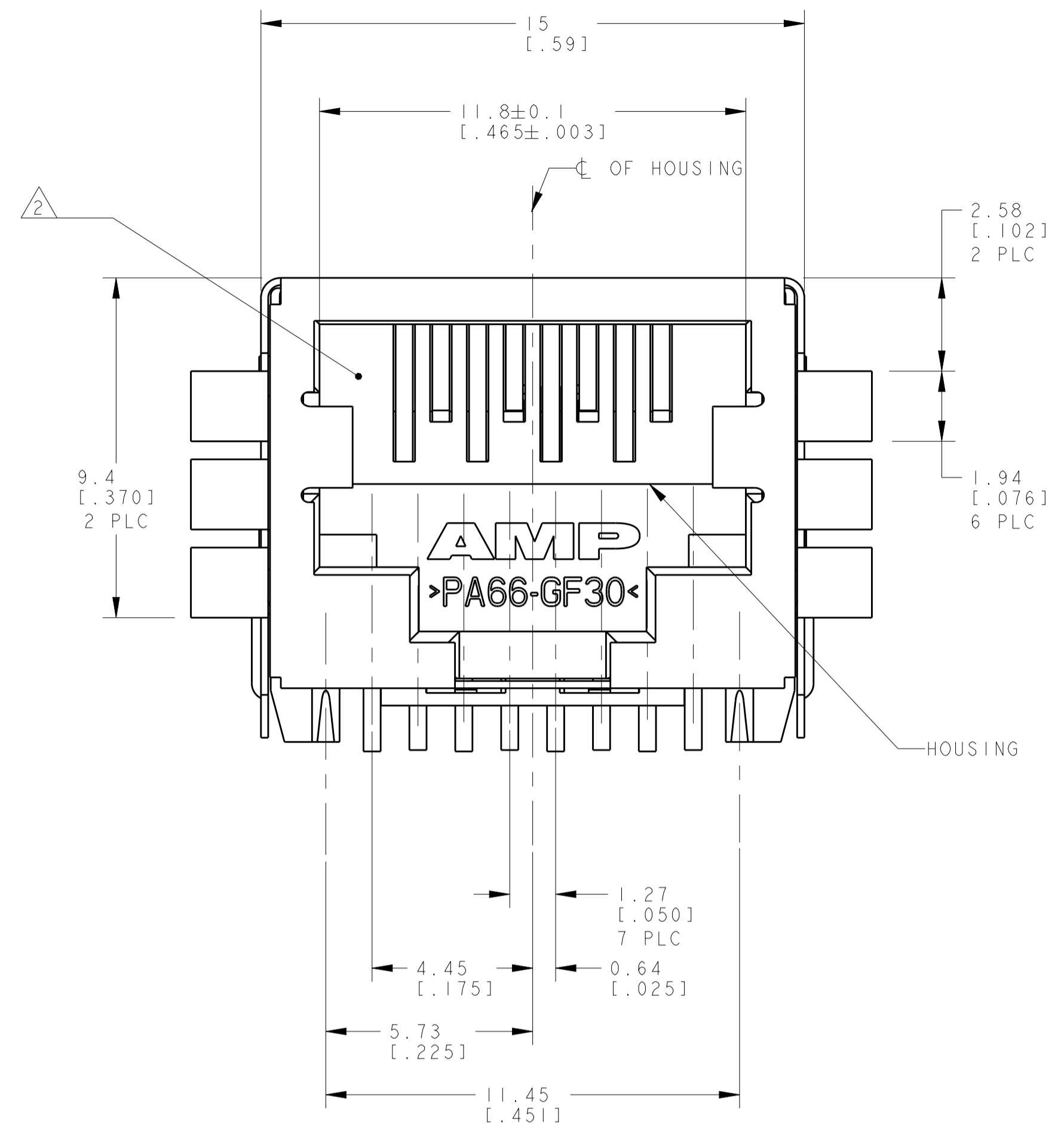
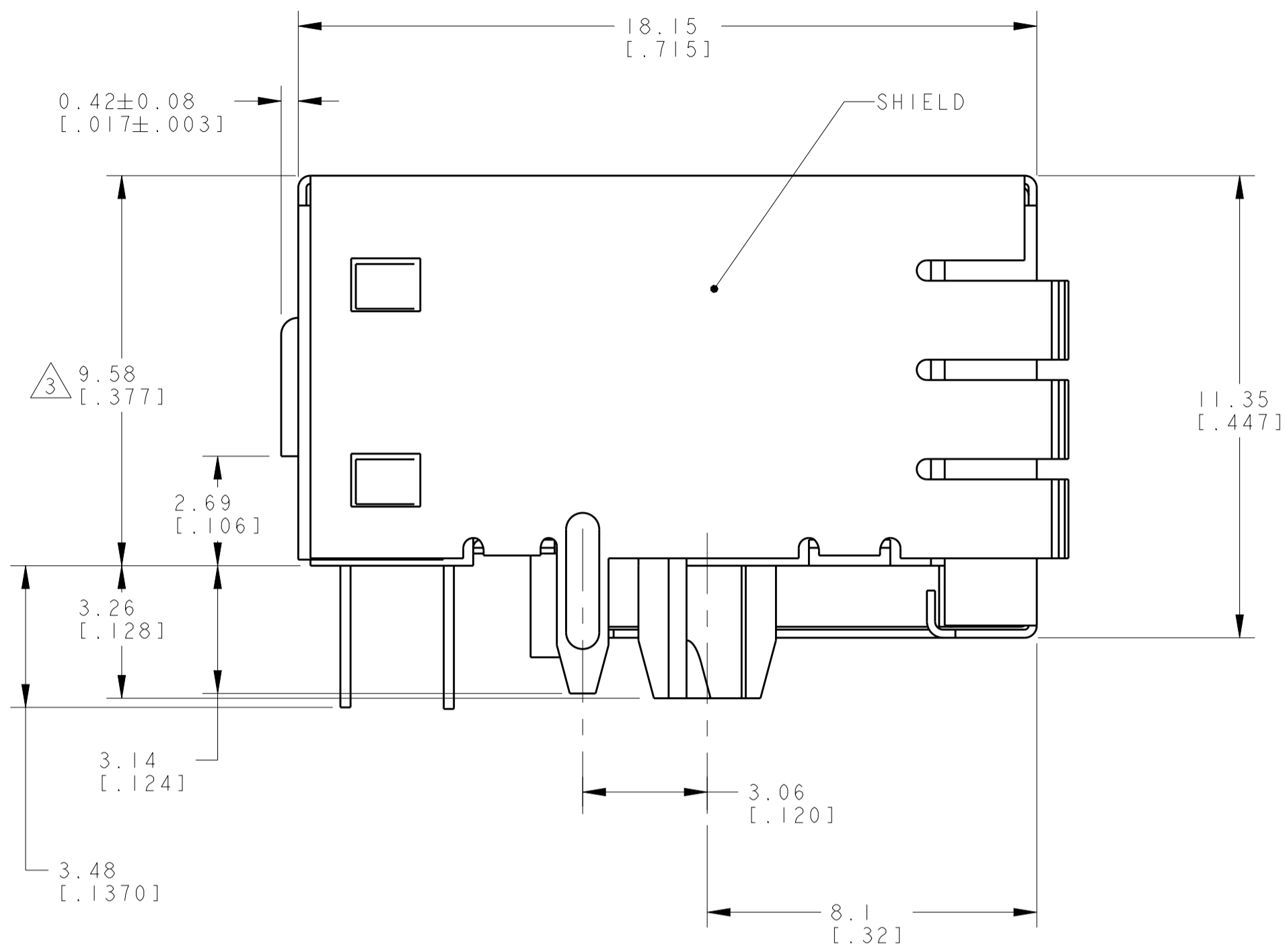
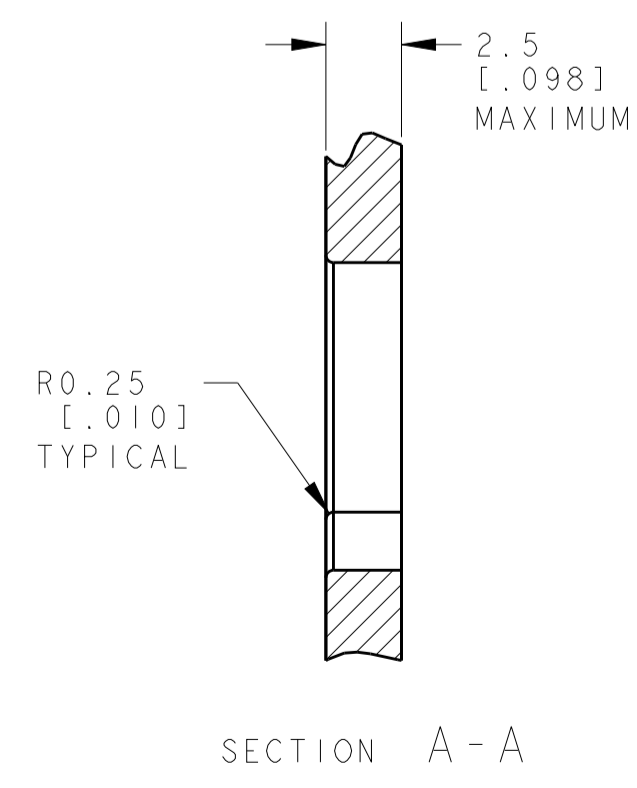
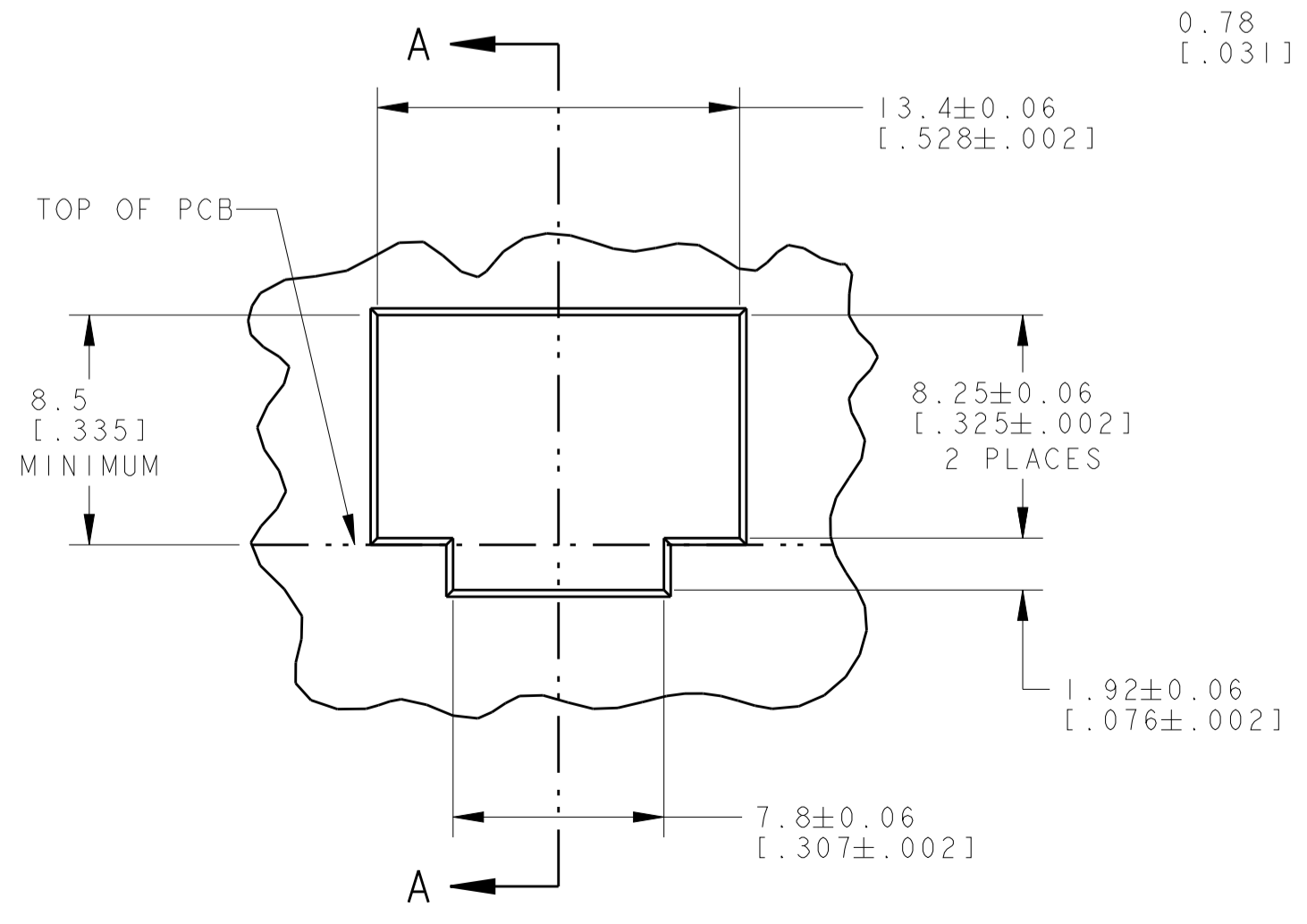
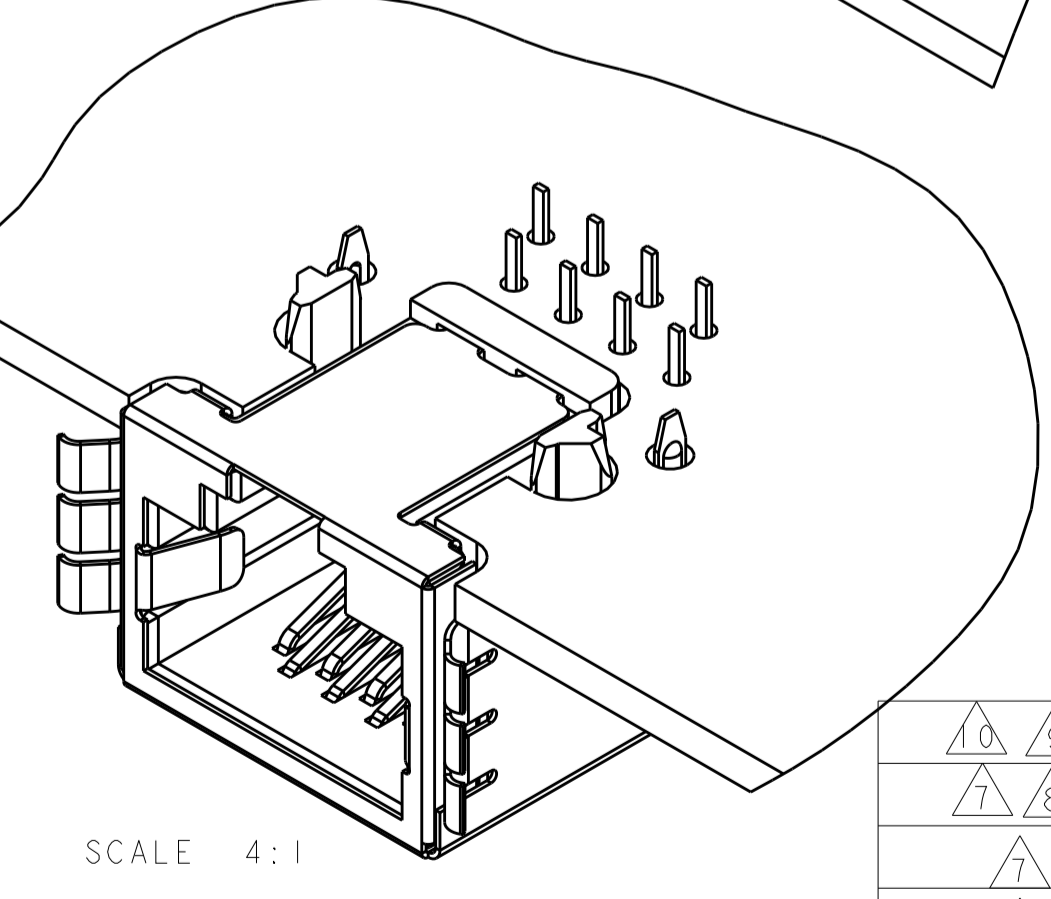
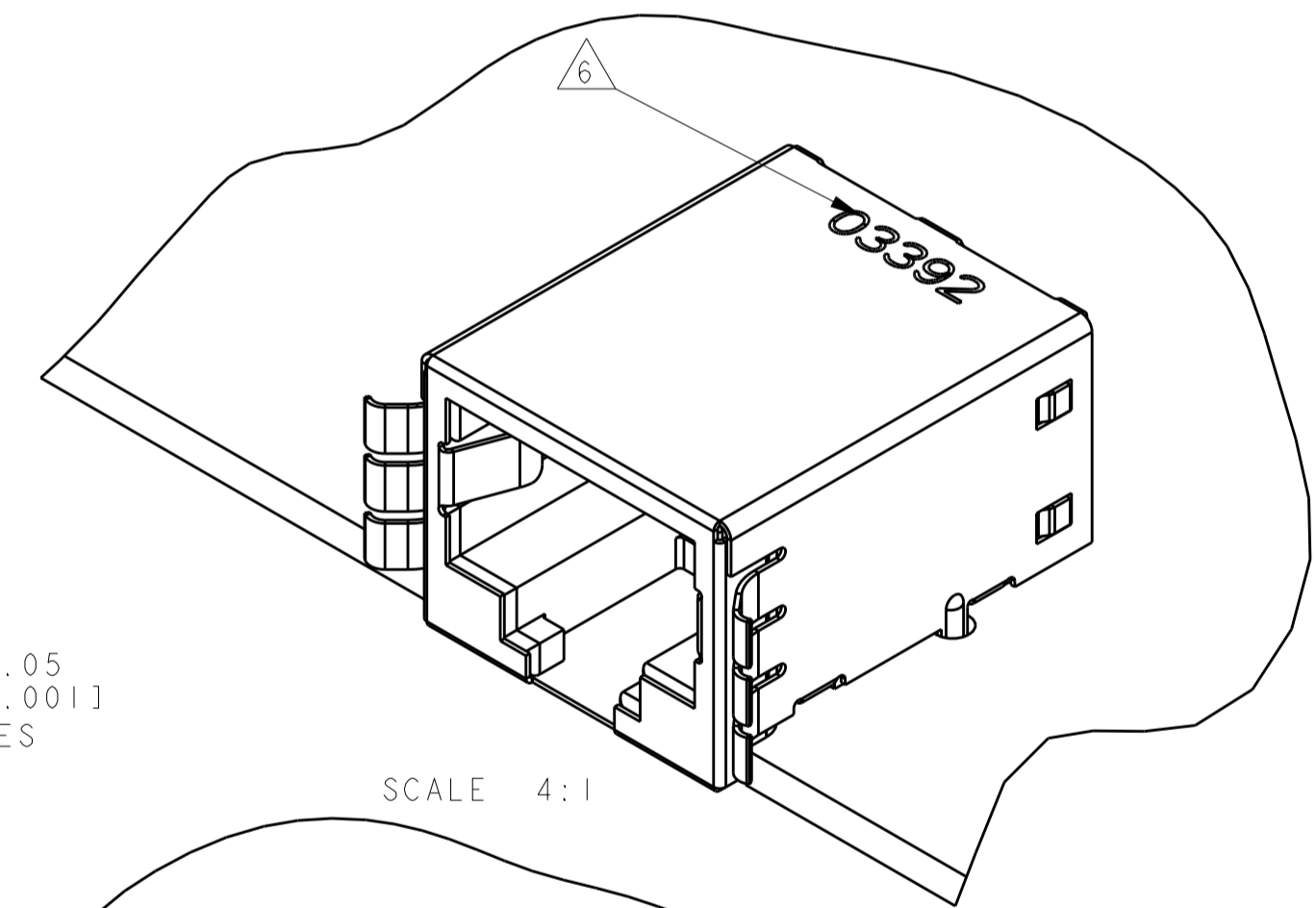
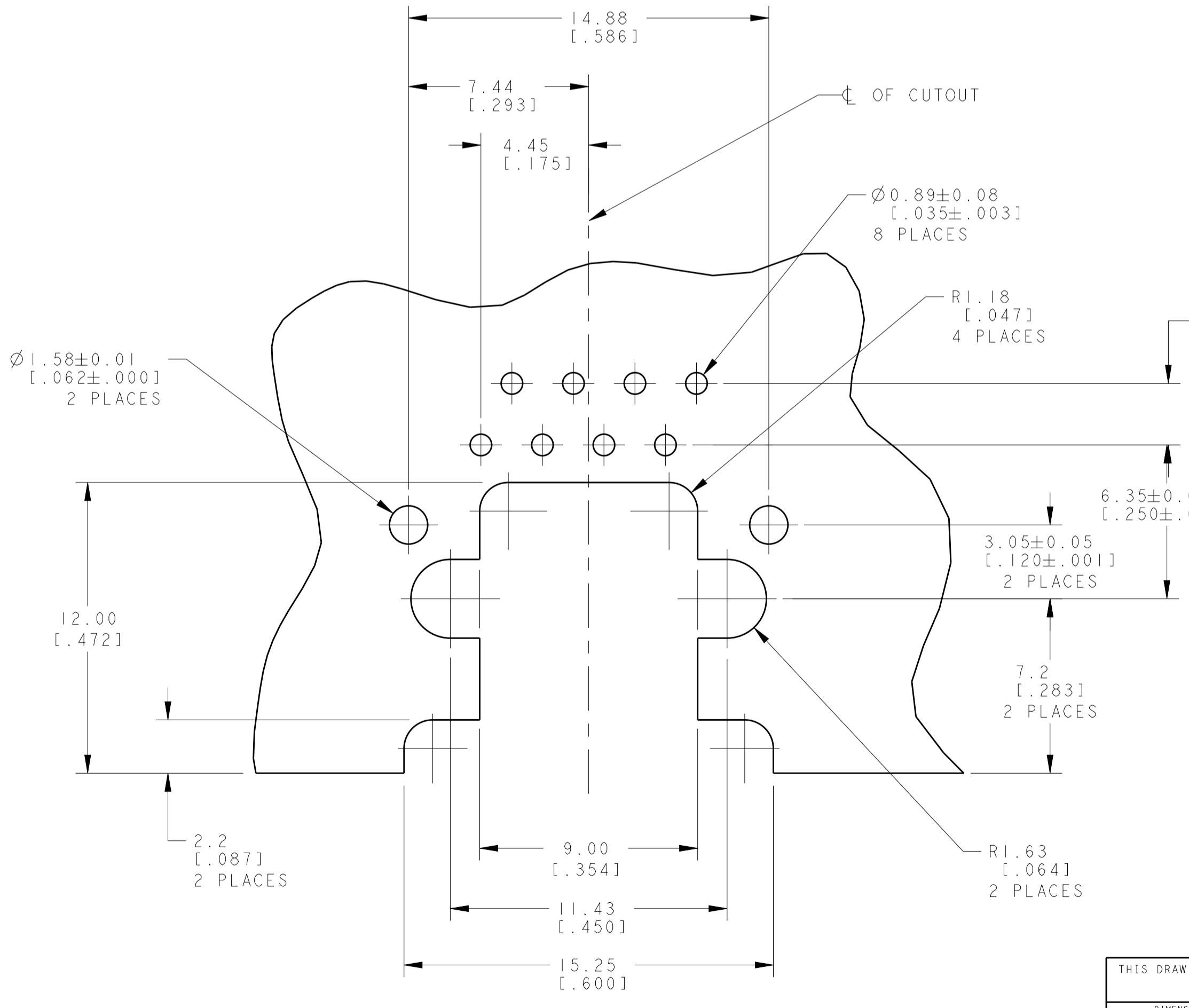
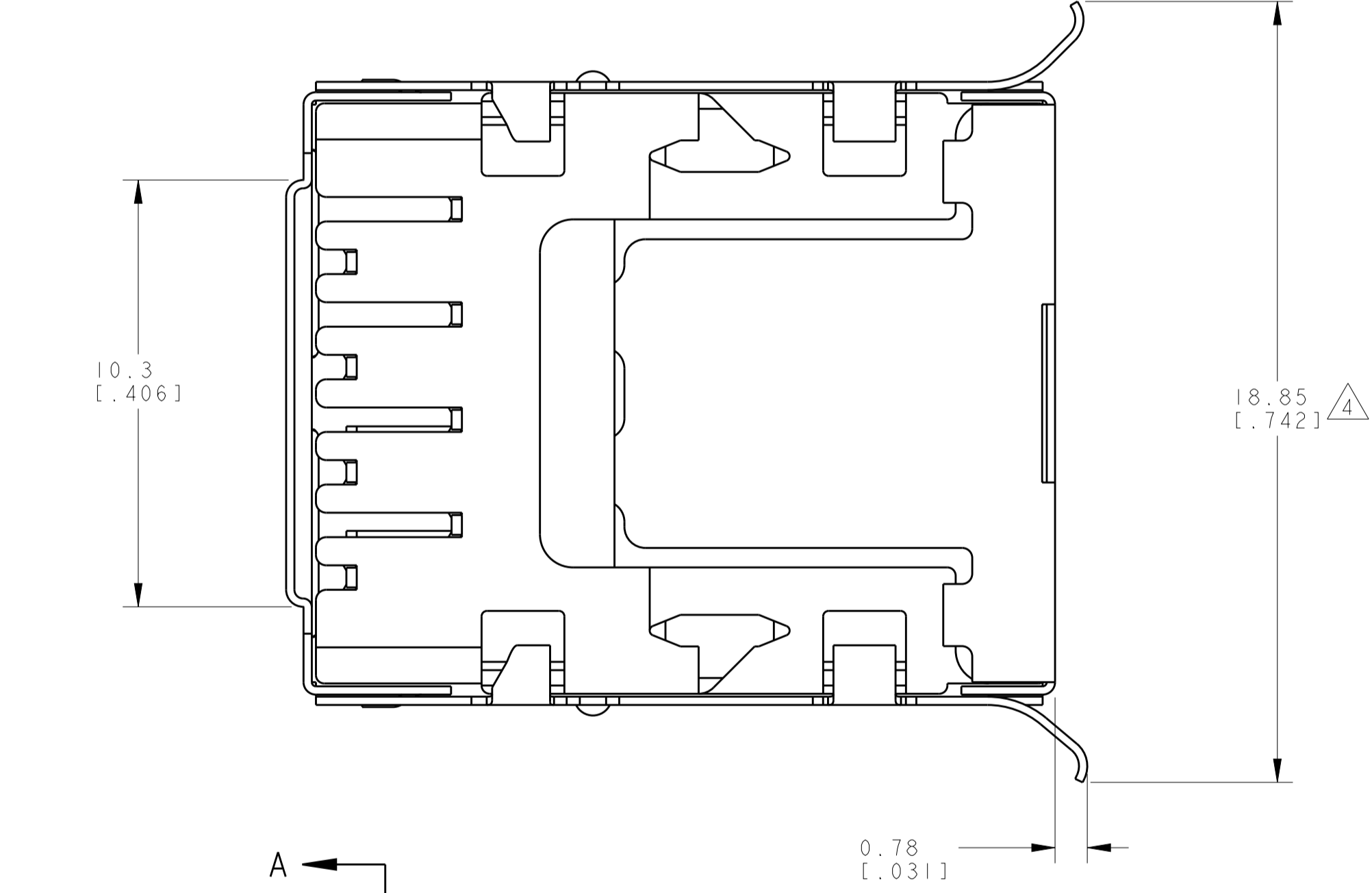


LOC	DIST	REV	DATE	BY	APPV
AA	22	T	24APR2015	LL	SH



- 1 MATERIAL: HOUSING - HIGH TEMPERATURE NYLON, BLACK, UL 94V-0, TERMINALS - 0.25 [ .010 ] THICK PHOSPHOR BRONZE PLATED WITH 3.81µm [ .000150 ] MINIMUM THICK BRIGHT TIN-LEAD IN SOLDER AREA, 1.27µm [ .000050 ] MINIMUM GOLD IN LOCALIZED PLATE AREA. ENTIRE TERMINAL PLATED WITH 1.27µm [ .000050 ] MINIMUM THICK NICKEL. SHIELD - 0.1 [ .0039 ] MIN THICK COPPER ZINC ALLOY, PREPLATED WITH 2.0-4.0µm ( .000079- .000157 ) THICK TIN OVER 1.27µm ( .000050 ) MIN THICK NICKEL.
- 2 JACK CAVITY CONFORMS TO FCC RULES AND REGULATIONS PART 68, SUBPART F.
- 3 THIS DIMENSION REPRESENTS THE TOTAL HEIGHT OF THE CONNECTOR FROM THE TOP OF THE PC BOARD.
- 4 THIS DIMENSION HAS A MAXIMUM VALUE OF 20.50 [ .807 ] WHEN JACK IS INSTALLED BEHIND PANEL.
- 5. PACKAGED 66 ASSEMBLIES PER PVC TRAY, 396 PER BOX.
- 6 MANUFACTURING DATE CODE: ORIENTED AND LOCATED APPROXIMATELY AS SHOWN. LASER PRINTING. TEXT HEIGHT APPROXIMATELY 2MM. FIRST 2 DIGITS = LAST 2 DIGITS OF YEAR. NEXT 2 DIGITS = MANUFACTURING WORK WEEK. LAST DIGIT = DAY OF WEEK WITH SUNDAY = 1.
- 7 MATERIAL: HOUSING - HIGH TEMPERATURE NYLON, BLACK, UL 94V-0, TERMINALS - 0.25 [ .010 ] THICK PHOSPHOR BRONZE PLATED WITH 3.81µm [ .000150 ] MINIMUM THICK MATTE TIN IN SOLDER AREA, 1.27µm [ .000050 ] MINIMUM GOLD IN LOCALIZED PLATE AREA. ENTIRE TERMINAL PLATED WITH 1.27µm [ .000050 ] MINIMUM THICK NICKEL. SHIELD - 0.1 [ .0039 ] MIN THICK COPPER ZINC ALLOY, PREPLATED WITH 2.0-4.0µm ( .000079- .000157 ) THICK TIN OVER 1.27µm ( .000050 ) MIN THICK NICKEL.
- 8 PACKED WITH TAPE AND REEL PACKAGE.
- 9 MATERIAL: SHIELD - 0.1 [ .0039 ] MIN THICK COPPER ZINC ALLOY, PREPLATED WITH 1.27µm ( .000050 ) MIN THICK NICKEL, PCB GROUND TABS DIPPED WITH 2.03µm ( .000080 ) MIN TIN. OTHER COMPONENT: AS SAME AS 7.
- 10. PACKED WITH DRY PACKING.



SUGGESTED PRINTED CIRCUIT BOARD LAYOUT COMPONENT SIDE SCALE 6:1

10	9	1116062-4
7	8	1116062-3
7		1116062-2
		1116062-1
MATERIAL / FINISH		PART NUMBER

THIS DRAWING IS A CONTROLLED DOCUMENT.

DIMENSIONS: mm [ INCHES ]	TOLERANCES UNLESS OTHERWISE SPECIFIED:	DWN: J. AHERON 11NOV98	CHK: D. KEMPKA 11NOV98	APVD: D. KEMPKA 11NOV98	NAME: MODULAR JACK ASSEMBLY, 8 POSITION, SHIELDED, 10mm
0 PLC ±	±	PRODUCT SPEC	108-1163	APPLICATION SPEC	SIZE: CAGE CODE DRAWING NO: 1116062
2 PLC ±	±0.131 (.005)	WEIGHT	3.49 grams	CUSTOMER DRAWING	RESTRICTED TO: -
3 PLC ±	±	SCALE	8:1	SHEET	1 OF 1
4 PLC ±	±	REV	T		
ANGLES ±	±				

STE TE Connectivity

## X-ON Electronics

Largest Supplier of Electrical and Electronic Components

*Click to view similar products for [Modular Connectors / Ethernet Connectors](#) category:*

*Click to view products by [TE Connectivity](#) manufacturer:*

Other Similar products are found below :

[8949-H88/06BLKA/SN](#) [74441-0010/BKN](#) [MP1010RX-1000](#) [MP44RX-1000](#) [PHJ-4P4C-1-V-4](#) [PHP-6P6C-5](#) [GAX-3-66](#) [GAX-8-62](#) [GDCX-PA-66-50](#) [GDCX-PN-64](#) [GDCX-PN-66](#) [GDCX-PN-66-50](#) [GDLX-A-66](#) [GDLX-N-66](#) [GDLX-S-66](#) [GDLX-S-88K](#) [GDLX-SMT-S-88](#) [GDTX-S-88-50](#) [GDX-PA-1010](#) [GLX-N-1010M-BLK](#) [GLX-S-88M-BLK](#) [GMX-N-1010](#) [GMX-S-1010](#) [GMX-S-66](#) [GMX-SMT4-N-88](#) [GPX-2-64](#) [GSGX-N-2-88](#) [GSGX-N-4-88](#) [GSX-NS2-88-3.05](#) [GSX-NS2-88-3.05-50](#) [GSX-NS-88-3.05-50](#) [PT-108A-8C-UL](#) [PT-J951-8C](#) [PTS-J531-8CS-50UL](#) [1-1775629-2](#) [A-2014-0-4](#) [GWLX-S-88-GR](#) [GWLX-S9-88-YG](#) [DC-1021-8-WH-6](#) [1300530003](#) [1324640-4](#) [RJ11FTVC2G](#) [RJ11FTVC2N](#) [RJFTVX2SA1G](#) [132764-001](#) [1413235](#) [MP88X-1000](#) [MPS88RX-5000](#) [E5288-S000K3-L](#) [E5908-15A242-L](#)