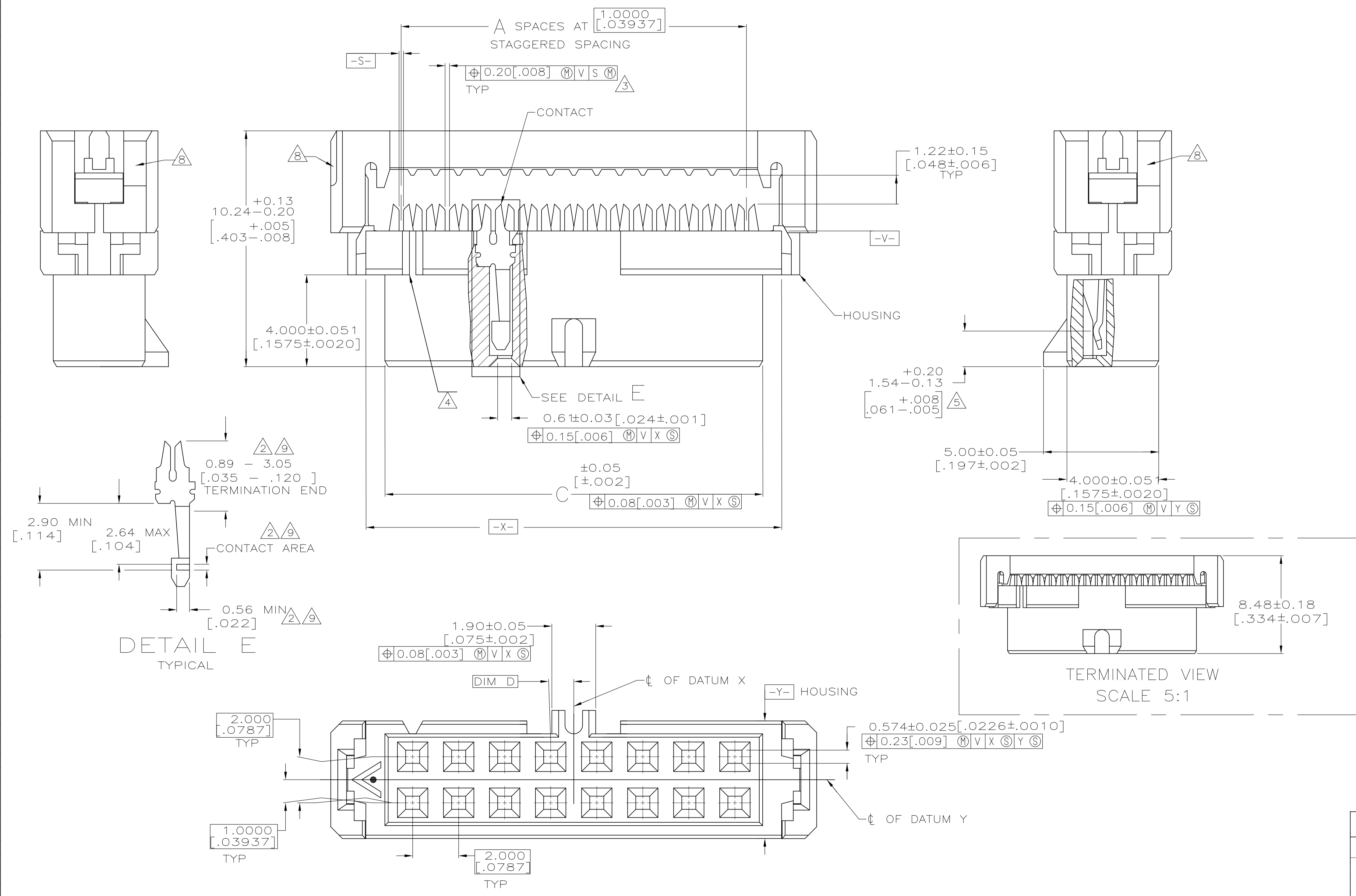


- 1 MOLDED PARTS: POLYESTER, UL RATED 94V-0, BLACK. CONTACTS: BERYLLIUM COPPER.
- 2 2.54 μm [.000100] MIN TIN-LEAD ON TERMINATION END, 0.76 μm [.000030] MIN GOLD ON CONTACT AREA, ALL OVER 1.27 μm [.000050] MIN NICKEL.
- 3 POSITION TOLERANCE APPLIES 0.76 [.030] ABOVE DATUM V.
- 4 POSITION NUMBER 1 INDICATOR.
- 5 ELECTRICAL ENGAGEMENT ZONE.
- 6 RECOMMENDED 28 AWG RIBBON CABLE, 0.61 - 0.97 [.024 - .038] THICK PVC, 1.0000 [.03937] PITCH. AMP LOGO ORIENTATION IS OPTIONAL.
- 7 RECESS ON EACH END, OPPOSITE CORNER.
- 8 0.13 μm [.000005] MIN GOLD ON TERMINATION END, 0.76 μm [.000030] MIN GOLD ON CONTACT AREA, ALL OVER 1.27 μm [.000050] MIN NICKEL.
- 10 MOLD GATE PROJECTION ON EITHER END OF COVER TO BE EXCLUDED FROM DIMENSION 'B' MEASUREMENT.



CONTACT FINISH	D	C	B	A	NO OF POSN	PART NO
	12.40	17.15	11	12		3-111623-1
	12.40	17.15	11	12		1-111623-7
	8.41	13.18	7	8		1-111623-6
	8.41	13.18	7	8		1-111623-5
	22.40	27.18	21	22		1-111623-5
	22.40	27.18	21	22		1-111623-4
	34.42	39.17	33	34		1-111623-4
	34.42	39.17	33	34		1-111623-3
	24.41	29.18	23	24		1-111623-2
	24.41	29.18	23	24		1-111623-1
	50.39	55.17	49	50		1-111623-1
	50.39	55.17	49	50		1-111623-0
	44.40	49.17	43	44		1-111623-0
	44.40	49.17	43	44		1-111623-0
	40.41	45.19	39	40		111623-9
	40.41	45.19	39	40		111623-8
	30.40	35.18	29	30		111623-7
	30.40	35.18	29	30		111623-6
	1.197	1.385	25	26		111623-5
	1.197	1.385	25	26		111623-4
	20.40	25.17	19	20		111623-3
	20.40	25.17	19	20		111623-2
	16.41	21.18	15	16		111623-1
	16.41	21.18	15	16		111623-0
	14.40	19.18	13	14		111623-0
	14.40	19.18	13	14		111623-0
	10.41	15.16	9	10		111623-0
	10.41	15.16	9	10		111623-0
	12.40	17.15	11	12		111623-1
	12.40	17.15	11	12		111623-0
	8.41	13.18	7	8		111623-1
	8.41	13.18	7	8		111623-0
	22.40	27.18	21	22		111623-1
	22.40	27.18	21	22		111623-0
	34.42	39.17	33	34		111623-1
	34.42	39.17	33	34		111623-0
	24.41	29.18	23	24		111623-1
	24.41	29.18	23	24		111623-0
	50.39	55.17	49	50		111623-1
	50.39	55.17	49	50		111623-0
	44.40	49.17	43	44		111623-1
	44.40	49.17	43	44		111623-0
	40.41	45.19	39	40		111623-1
	40.41	45.19	39	40		111623-0
	30.40	35.18	29	30		111623-1
	30.40	35.18	29	30		111623-0
	1.197	1.385	25	26		111623-1
	1.197	1.385	25	26		111623-0
	20.40	25.17	19	20		111623-1
	20.40	25.17	19	20		111623-0
	16.41	21.18	15	16		111623-1
	16.41	21.18	15	16		111623-0
	14.40	19.18	13	14		111623-1
	14.40	19.18	13	14		111623-0
	10.41	15.16	9	10		111623-1
	10.41	15.16	9	10		111623-0

THIS DRAWING IS A CONTROLLED DOCUMENT. DIMENSIONS: mm [INCHES]. TOLERANCES UNLESS OTHERWISE SPECIFIED: 0 PLC ± .008 [0.03], 1 PLC ± .008 [0.03], 2 PLC ± .008 [0.03], 3 PLC ± .008 [0.03], 4 PLC ± .008 [0.03]. MATERIAL: POLYESTER. FINISH: CONTACTS: SEE TABLE.

DIN C. OBERMAN 02-21-92. CHK: J. McCLINTON 3-9-92. NAME: J. McCLINTON. PRODUCT SPEC: 108-1372. APPLICATION SPEC: RECEPTACLE ASSY, POLARIZED, 2mm CL, AMP-LATCH. SIZE: A1. CAGE CODE: 00779. DRAWING NO: 111623. WEIGHT: -. RESTRICTED TO: CUSTOMER DRAWING. SCALE: 10:1. SHEET: 1 of 1. REV: L2.

STE TE Connectivity

X-ON Electronics

Largest Supplier of Electrical and Electronic Components

Click to view similar products for [Headers & Wire Housings](#) category:

Click to view products by [TE Connectivity](#) manufacturer:

Other Similar products are found below :

[892-18-020-10-001101](#) [58102-G61-06LF](#) [582553-1](#) [0009485154](#) [009176003701906](#) [0050291907](#) [LY20-4P-DT1-P1E-BR](#) [02.125.8002.8](#)
[609-3404](#) [61062-3](#) [61082-181009](#) [622-3653LF](#) [63453-116](#) [636-1030](#) [636-1427](#) [636-3427](#) [636-4007](#) [641938-9](#) [641991-4](#) [644827-2](#) [65817-010LF](#) [65817-015LF](#) [65863-015LF](#) [66207-023LF](#) [67095-007LF](#) [67601157](#) [68645-018](#) [68648-049](#) [70.362.1628.0](#) [70-4210](#) [70-4226B](#) [70-4853B](#) [707-5020](#) [707-5028](#) [71.350.2428.0](#) [71918-208LF](#) [71961-016LF](#) [733-134](#) [733-162](#) [754199-000](#) [760-3052](#) [787-8014-00](#) [79531-3000](#)
[FCN-360C032-B](#) [FCN-367T-T012/H](#) [FCN-723D010/2](#) [80.063.4001.1](#) [800-90-001-10-001000](#) [800-90-010-10-002000](#) [801-43-002-10-013000](#)