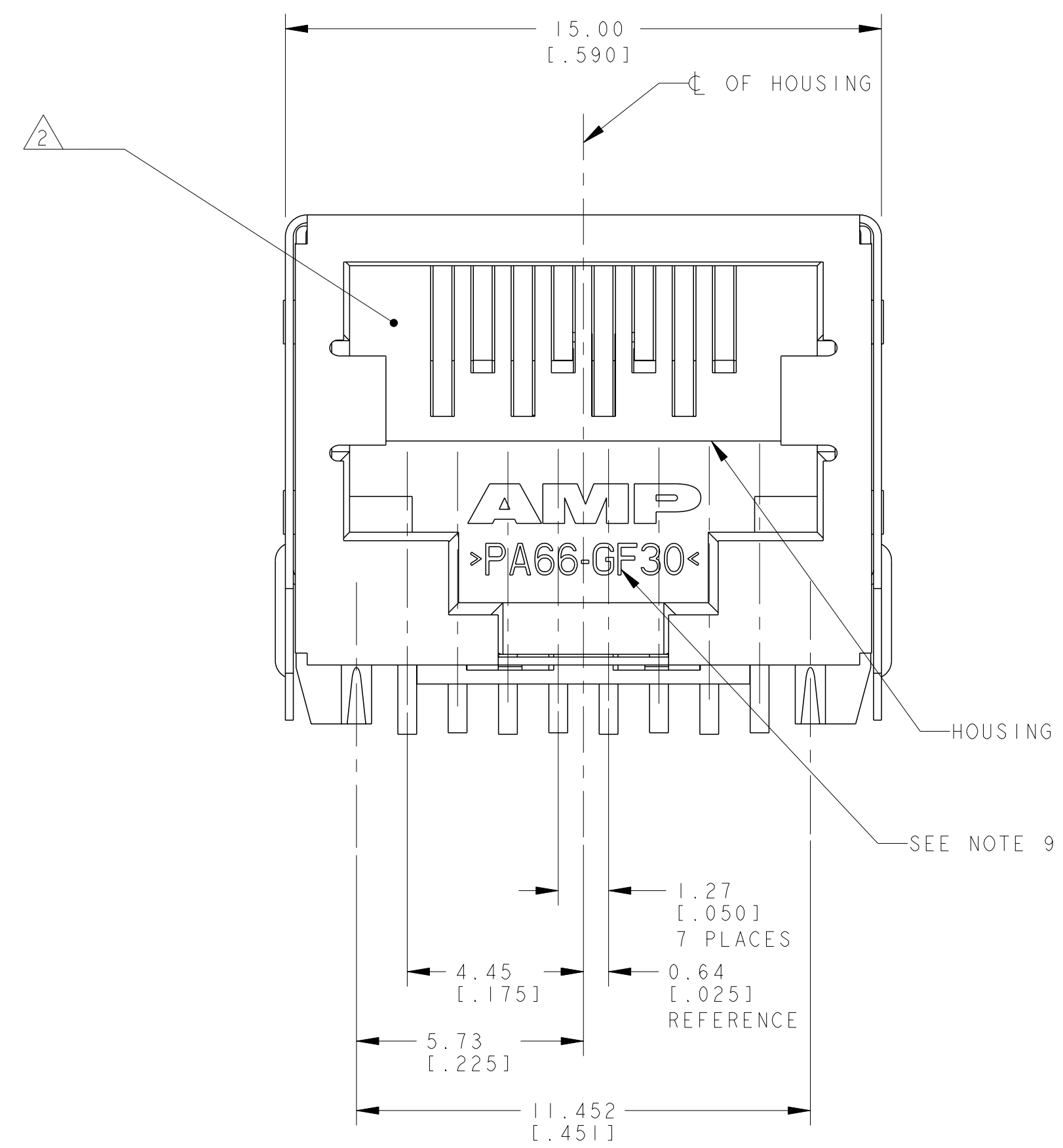
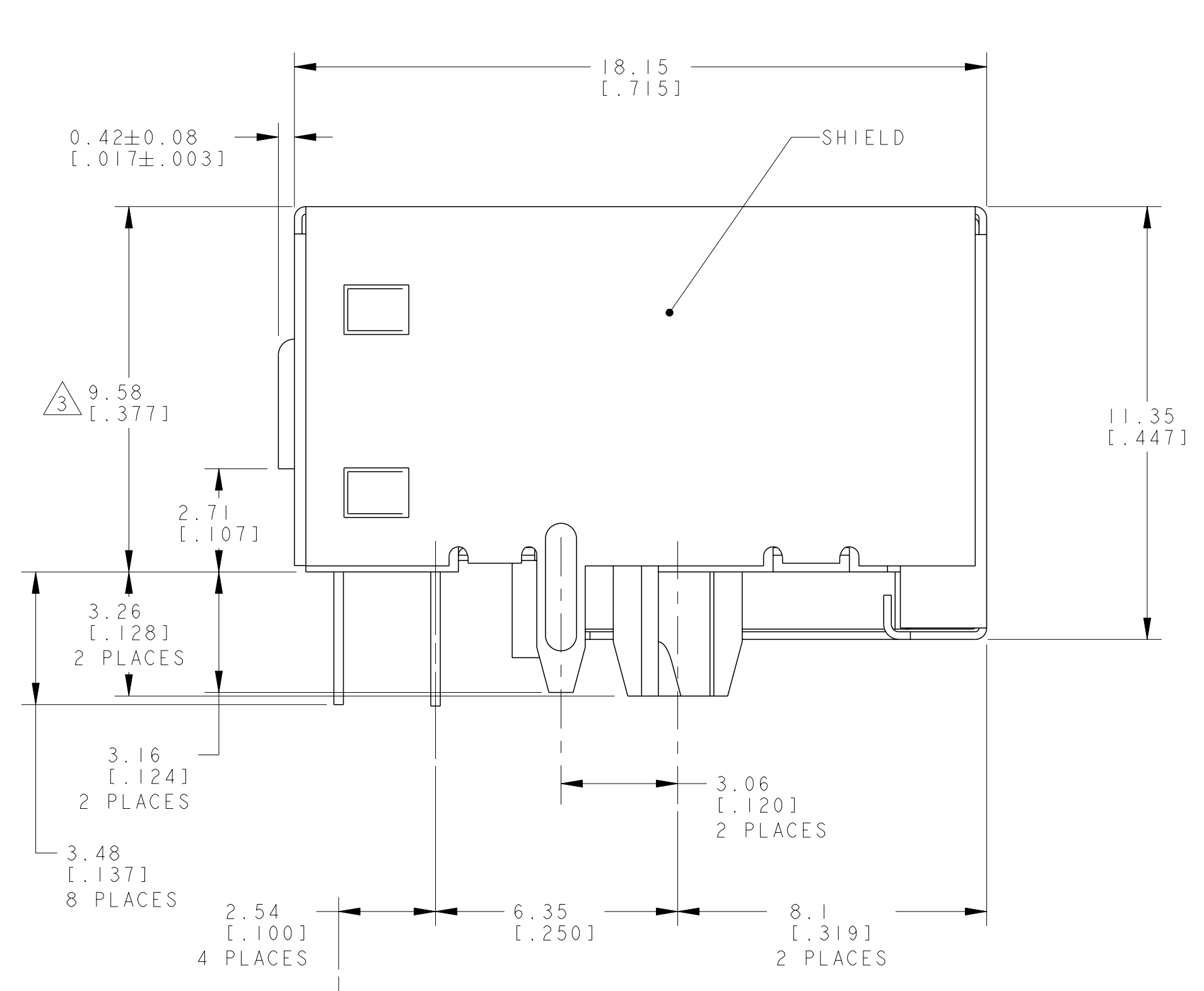
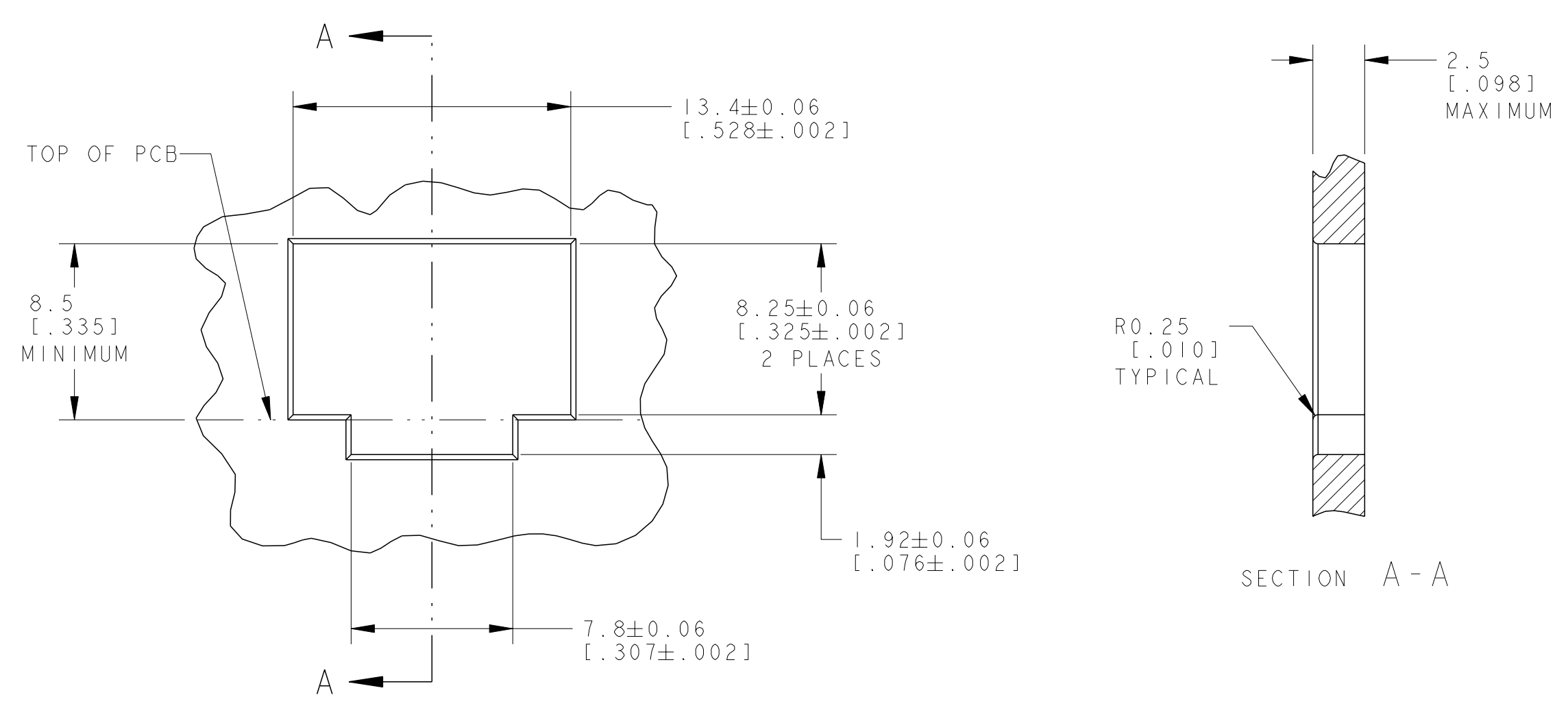
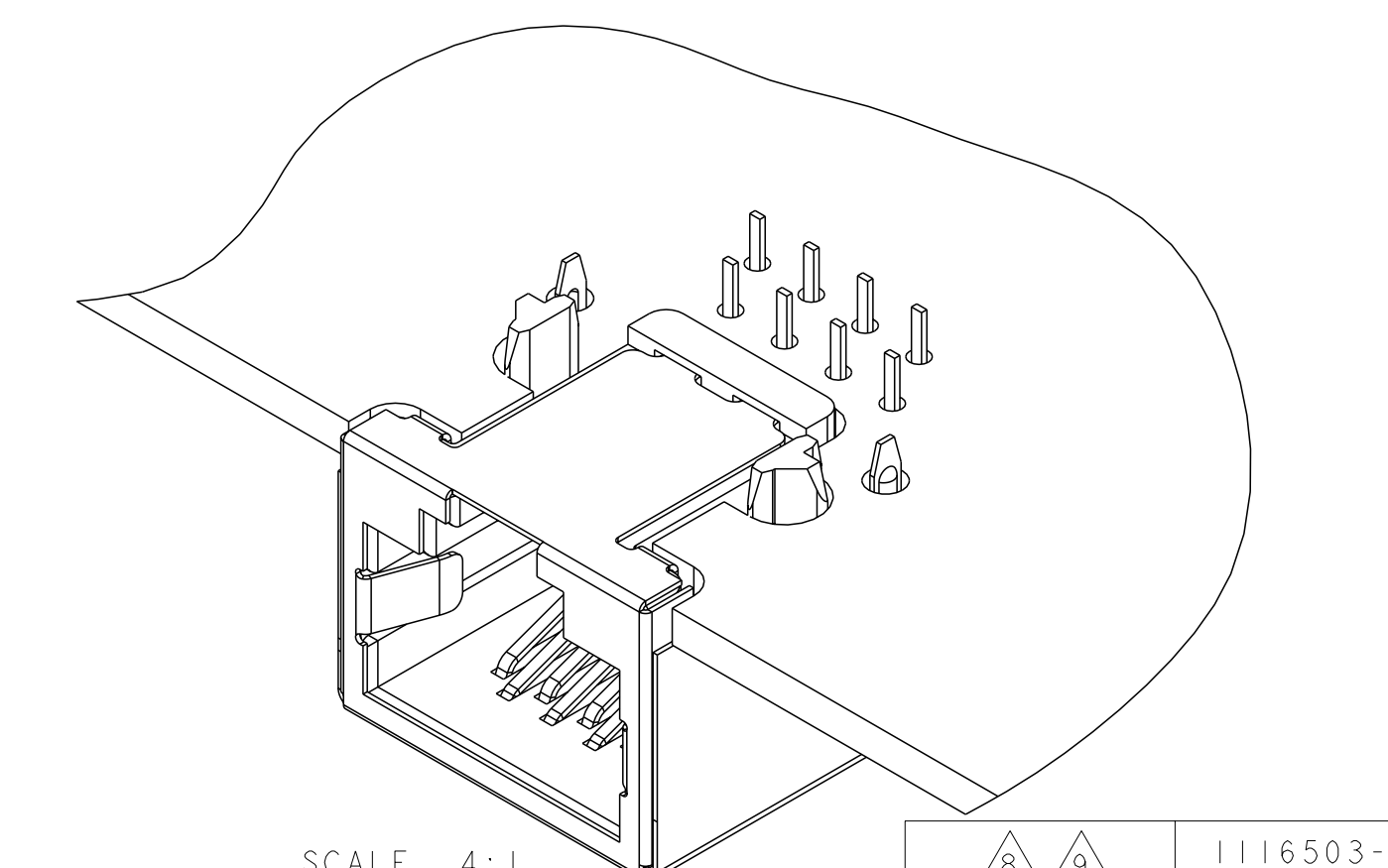
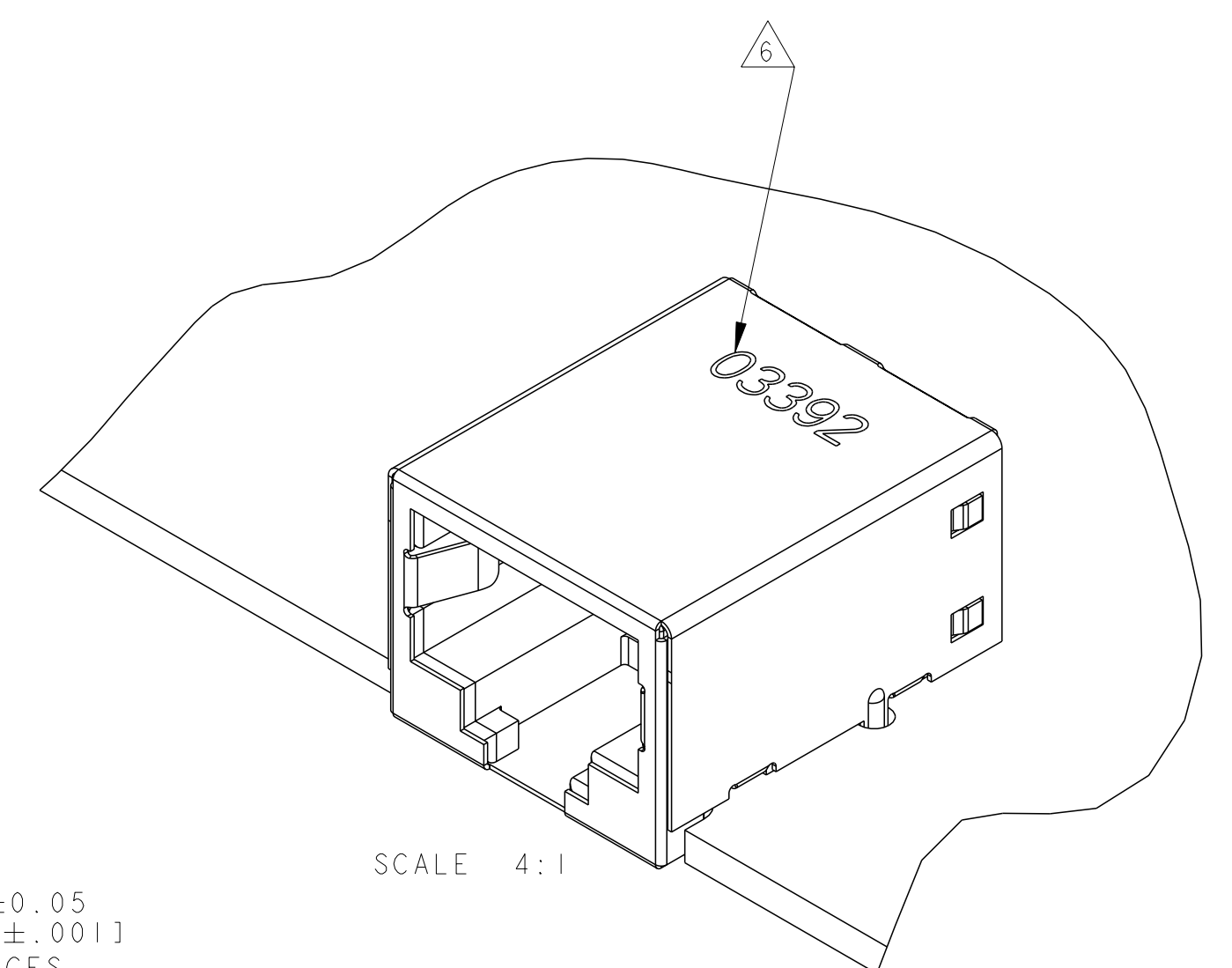
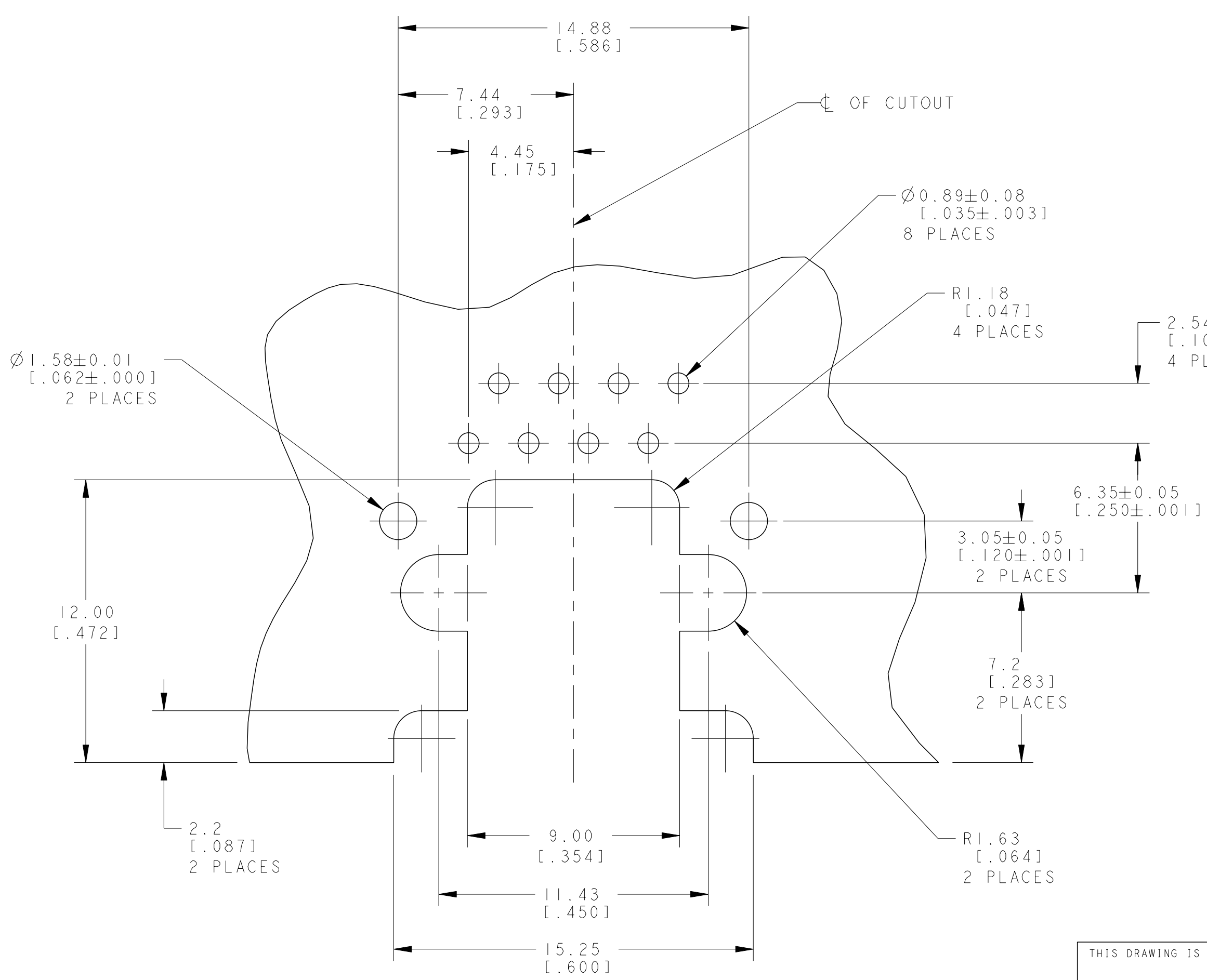
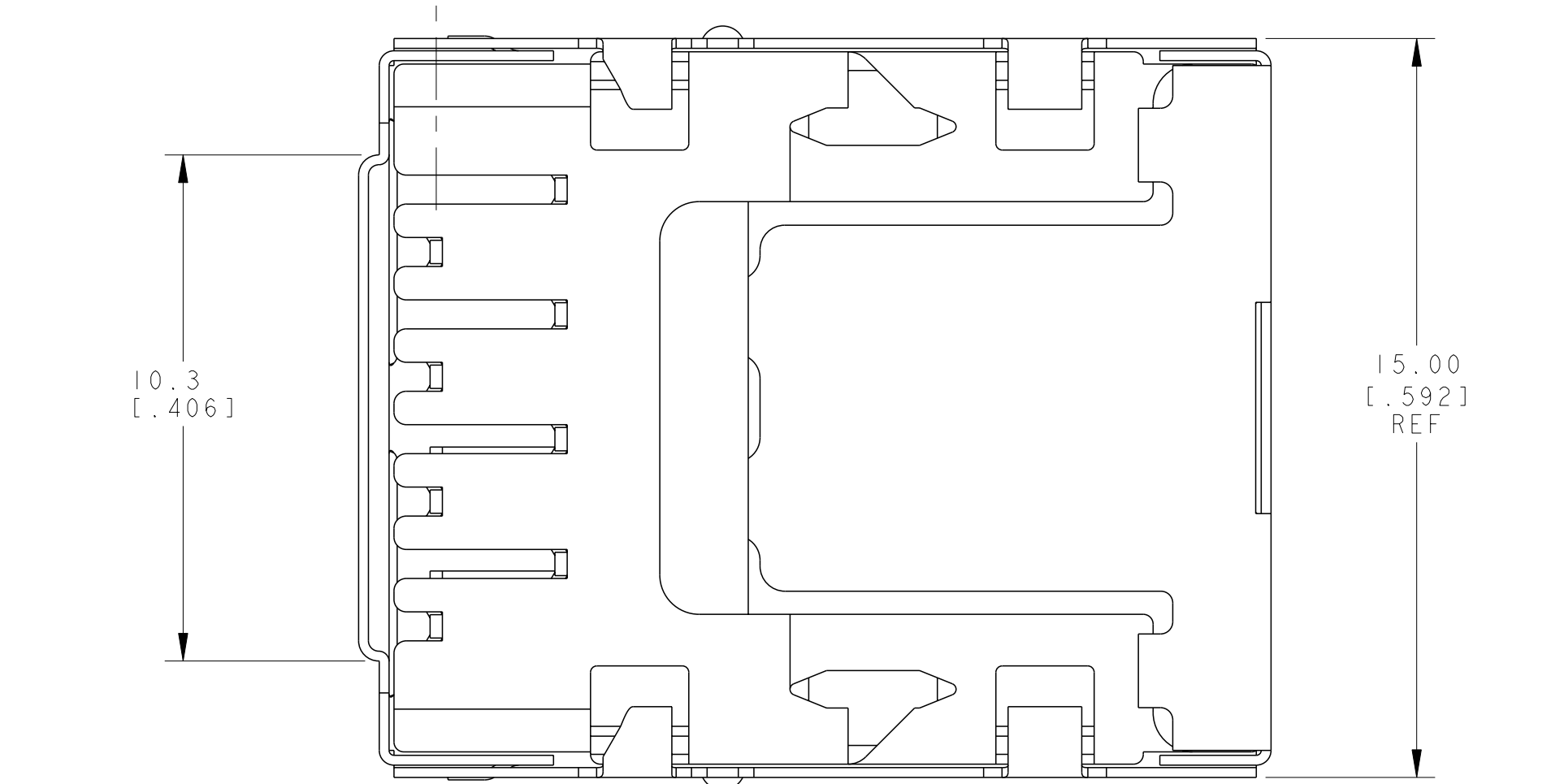


REVISONS		DATE	OWN	APVD
N1	REVISED PER ECO-11-005027	12MAY2011	RK	HMR
P	REVISED PER ECO-14-015233	27APR2015	LL	SH
R	ECO-16-011601	05AUG2016	LL	SH



- 1 MATERIAL: HOUSING - HIGH TEMPERATURE NYLON, BLACK, UL 94V-0, TERMINALS - 0.25[.01] THICK PHOSPHOR BRONZE PLATED WITH 3.81µm(.000150) MINIMUM THICK BRIGHT TIN-LEAD IN SOLDER AREA, 1.27µm(.000050) MINIMUM GOLD IN LOCALIZED PLATE AREA. ENTIRE TERMINAL PLATED WITH 1.27µm(.000050) MINIMUM THICK NICKEL. SHIELD - 0.1[.0039] MIN THICK COPPER ZINC ALLOY, PREPLATED WITH 2.0-4.0µm (.000079-.000157) THICK TIN OVER 1.27 µm (.000050) MIN THICK NICKEL.
- 2 JACK CAVITY CONFORMS TO FCC RULES AND REGULATIONS PART 68, SUBPART F.
- 3 THIS DIMENSION REPRESENTS THE TOTAL HEIGHT OF THE CONNECTOR FROM THE TOP OF THE PC BOARD.
- 4 PACKAGED 66 ASSEMBLIES PER PVC TRAY, 396 PER BOX.
- 5 DIELECTRIC WITHSTANDING VOLTAGE BETWEEN SHIELD AND TERMINAL IS 1500 VAC.
- 6 MANUFACTURING DATE CODE:  
 ORIENTED AND LOCATED APPROXIMATELY AS SHOWN. LASER PRINTING.  
 TEXT HEIGHT APPROXIMATELY 2MM.  
 FIRST 2 DIGITS = LAST 2 DIGITS OF YEAR  
 NEXT 2 DIGITS = MANUFACTURING WORK WEEK  
 LAST DIGIT = DAY OF WEEK WITH SUNDAY = 1
- 7 MATERIAL: HOUSING - HIGH TEMPERATURE NYLON, BLACK, UL 94V-0, TERMINALS - 0.25[.01] THICK PHOSPHOR BRONZE PLATED WITH 3.81µm(.000150) MINIMUM THICK MATTE TIN IN SOLDER AREA, 1.27µm(.000050) MINIMUM GOLD IN LOCALIZED PLATE AREA. ENTIRE TERMINAL PLATED WITH 1.27µm(.000050) MINIMUM THICK NICKEL. SHIELD - 0.1[.0039] MIN THICK COPPER ZINC ALLOY, PREPLATED WITH 2.0-4.0µm (.000079-.000157) THICK TIN OVER 1.27 µm (.000050) MIN THICK NICKEL.
- 8 MATERIAL: HOUSING - POLYESTER LCP, NATURE, UL 94V-0, TERMINALS - 0.25[.01] THICK PHOSPHOR BRONZE PLATED WITH 3.81µm(.000150) MINIMUM THICK MATTE TIN IN SOLDER AREA, 1.27µm(.000050) MINIMUM GOLD IN LOCALIZED PLATE AREA. ENTIRE TERMINAL PLATED WITH 1.27µm(.000050) MINIMUM THICK NICKEL. SHIELD - 0.1[.0039] MIN THICK COPPER ZINC ALLOY, PREPLATED WITH 2.0-4.0µm (.000079-.000157) THICK TIN OVER 1.27 µm (.000050) MIN THICK NICKEL.
- 9 FOR 1116503-3 MATERIAL MARK: >LCP-GF30<.



8	9	1116503-3
7		1116503-2
		1116503-1
MATERIAL / FINISH		PART NUMBER

THIS DRAWING IS A CONTROLLED DOCUMENT.		OWN: J. AHERON 07APR99	NAME: MODULAR JACK ASSEMBLY, 8 POSITION, SHIELDED, 10mm WITHOUT PANEL TABS
DIMENSIONS: mm [INCHES]		CHK: D. KEMPKA 07APR99	
TOLERANCES UNLESS OTHERWISE SPECIFIED:		APVD: D. KEMPKA 07APR99	PRODUCT SPEC: 108-1163
0 PLC	±	APPLICATION SPEC: 114-2048	SIZE: 114-2048
1 PLC	±	WEIGHT: 3.49 grams	RESTRICTED TO: -
2 PLC	±0.13(.005)	CUSTOMER DRAWING	SCALE: 1:1
3 PLC	±		SHEET: 1 OF 1
4 PLC	±		REV: R
ANGLES	±		

## X-ON Electronics

Largest Supplier of Electrical and Electronic Components

*Click to view similar products for [Modular Connectors / Ethernet Connectors](#) category:*

*Click to view products by [TE Connectivity](#) manufacturer:*

Other Similar products are found below :

[8949-H88/06BLKA/SN](#) [74441-0010/BKN](#) [MP1010RX-1000](#) [MP44RX-1000](#) [PHJ-4P4C-1-V-4](#) [PHP-6P6C-5](#) [GAX-3-66](#) [GAX-8-62](#) [GDCX-PA-66-50](#) [GDCX-PN-64](#) [GDCX-PN-66](#) [GDCX-PN-66-50](#) [GDLX-A-66](#) [GDLX-N-66](#) [GDLX-S-66](#) [GDLX-S-88K](#) [GDLX-SMT-S-88](#) [GDTX-S-88-50](#) [GDX-PA-1010](#) [GLX-N-1010M-BLK](#) [GLX-S-88M-BLK](#) [GMX-N-1010](#) [GMX-S-1010](#) [GMX-S-66](#) [GMX-SMT4-N-88](#) [GPX-2-64](#) [GSGX-N-2-88](#) [GSGX-N-4-88](#) [GSX-NS2-88-3.05](#) [GSX-NS2-88-3.05-50](#) [GSX-NS-88-3.05-50](#) [PT-108A-8C-UL](#) [PT-J951-8C](#) [PTS-J531-8CS-50UL](#) [1-1775629-2](#) [A-2014-0-4](#) [GWLX-S-88-GR](#) [GWLX-S9-88-YG](#) [DC-1021-8-WH-6](#) [1300530003](#) [1324640-4](#) [RJ11FTVC2G](#) [RJ11FTVC2N](#) [RJFTVX2SA1G](#) [132764-001](#) [1413235](#) [MP88X-1000](#) [MPS88RX-5000](#) [E5288-S000K3-L](#) [E5908-15A242-L](#)