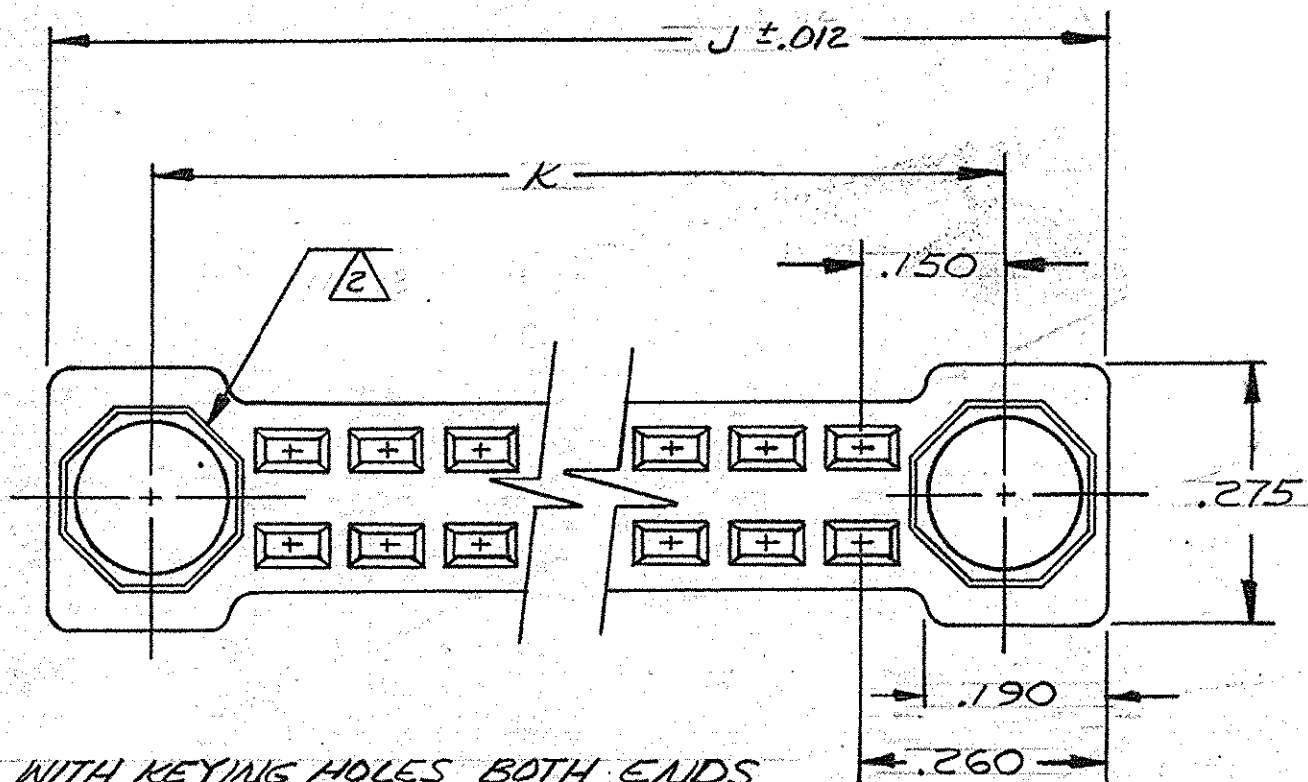
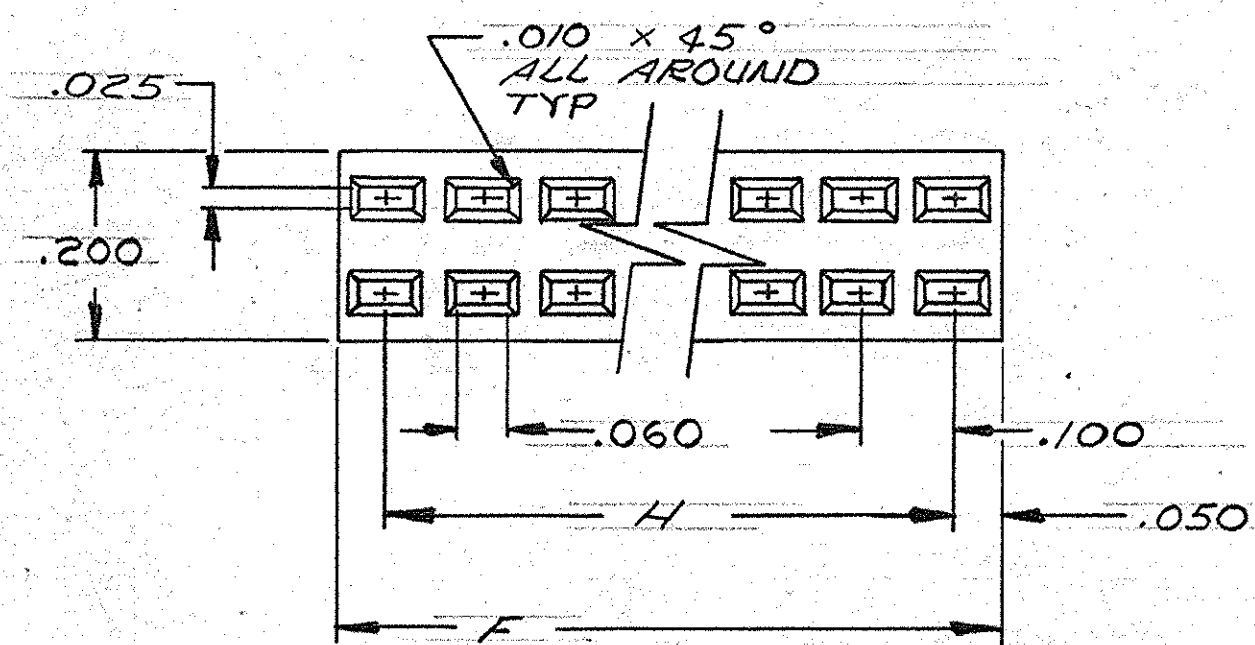


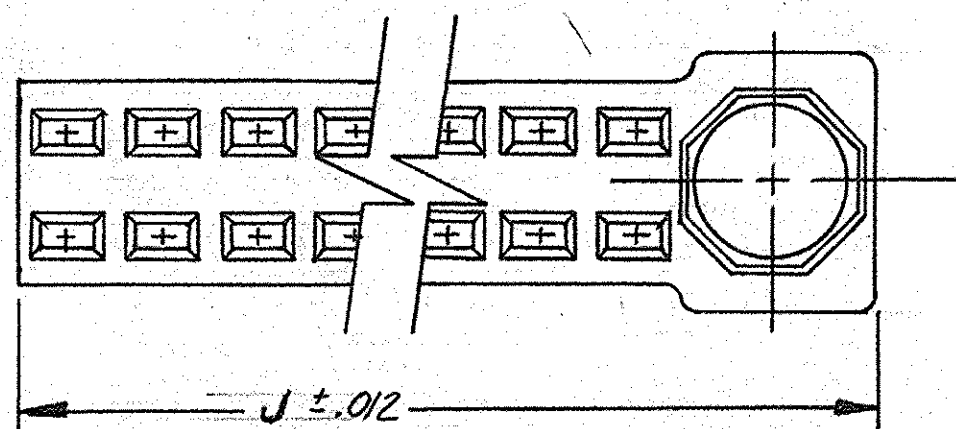
REVISIONS				
ZONE	LTR	DESCRIPTION	DATE	APPROVED
	U1	REVISED PER ECO-11-005030	24MAR11	HMR



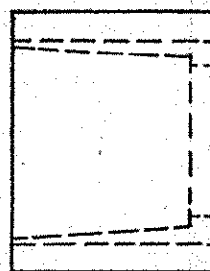
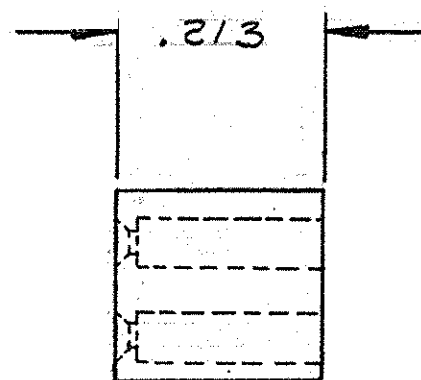
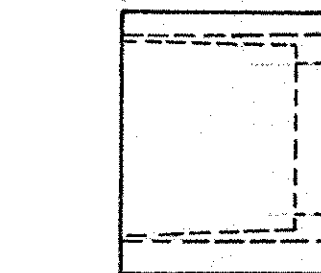
HOUSING WITH KEYING HOLES BOTH ENDS  
ALL OTHER DIMENSIONS, SEE BELOW



HOUSING WITH NO KEYING HOLES



HOUSING WITH KEYING HOLE ONE END  
ALL OTHER DIMENSIONS, SEE ABOVE



- REFER TO DRAWING 117178 FOR TYPICAL APPLICATION WITH CONTACTS
- KEYING HOLES ARE DESIGNED TO ACCEPT KEY BUSHINGS MEETING THE REQUIREMENTS OF MIL-C-28754/39A AMP PART NO SERIES 117142.
- THE PRINTED CIRCUIT BOARD UPON WHICH THIS RECEPTACLE IS MOUNTED MUST HAVE A CLEARANCE HOLE OF .158 DIA WHEN THE MATING HEADER (REF 117096) HAS KEY PINS MEETING THE REQUIREMENTS OF MIL-C-28754/24A
- SEE SHEET 2 FOR DIMENSIONS AND PART NUMBERS.
- GLASS FILLED THERMOPLASTIC POLYESTER, BLACK. PER MIL-M-24519, GPT-30F
- KEYING HOLE WILL BE TO THE LEFT ON SINGLE KEYING HOLE HOUSINGS WHEN MARKED WITH PART NO. & DATE CODE
- "AMP" TRADEMARK, PART NO. AND DATE CODE (YR.-WK) .062 MIN. HIGH CHAR'S. CENTRALLY LOCATED, AS SHOWN; (SEE DET A).
- OBSELETE (DUE TO NO ACTIVITY).

NUMBER 116975

UNLESS OTHERWISE SPECIFIED, DIMENSIONS ARE IN INCHES TOLERANCES ON: DECIMALS ± .008 ANGLES ± 1°	CONTRACT NO.			
	DR <i>J. Michael</i> 3-18-81			
MATERIAL	CHK <i>T. Willems</i> 3/18/81	NAME ECONOMATE II		
	APPD <i>T. Willems</i> 3/18/81	HOUSING RECEPTACLE		
	REL <i>J. Michael</i> 3-18-81	(.100 x .100)		
	DSGN APPD	SIZE C	CODE IDENT NO. 00779	NUMBER 116975
OTHER APPD	SCALE	SHEET 1 OF 2		REV U1

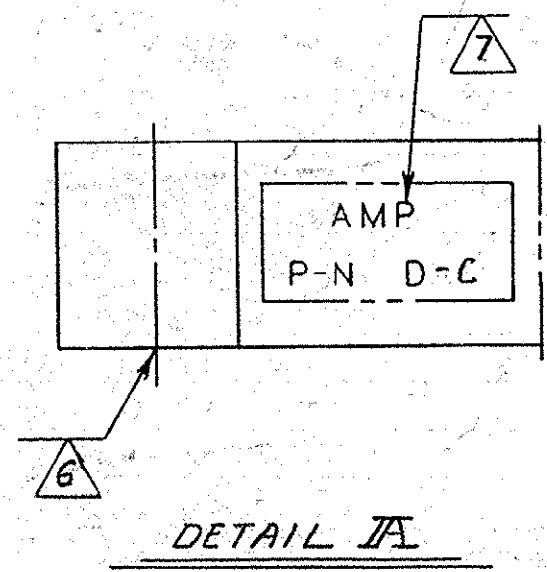
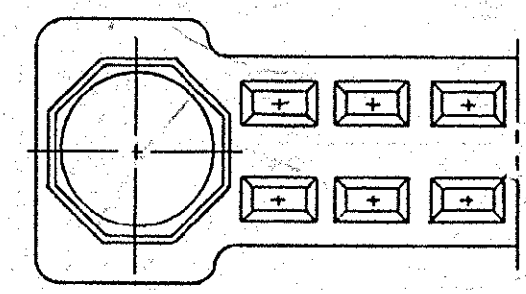
REVISIONS				
P	F	ZONE/LTR	DESCRIPTION	DATE APPROVED
-	-	-	SEE SHEET 1	

POS.	PART No.	MATERIAL	DIM "H"	DIM "J"	DIM "K"	REMARKS
15	2-116975-7	△	1.400	1.920	1.700	KEYING HOLES
20	1- -2	↑	1.900	2.420	2.200	BOTH ENDS
21	2- -8		2.000	2.520	2.300	
22	2- -9		2.100	2.620	2.400	
23	3- -0		2.200	2.720	2.500	
24	3- -1		2.300	2.800	2.600	
25	2- -4		2.400	2.920	2.700	
26	3- -2		2.500	3.020	2.800	
27	3- -3		2.600	3.120	2.900	
28	2- -0		2.700	3.220	3.000	
29	3- -4		2.800	3.320	3.100	
30	1- -3		2.900	3.420	3.200	
31	3- -5		3.000	3.520	3.300	
32	3- -6		3.100	3.620	3.400	
33	3- -7		3.200	3.720	3.500	
34	3- -8		3.300	3.820	3.600	
35	1- -8		3.400	3.920	3.700	
36	3- -9		3.500	4.020	3.800	
37	4- -0		3.600	4.120	3.900	
38	4- -1		3.700	4.220	4.000	
39	4- -2		3.800	4.320	4.100	
40	1- -4		3.900	4.420	4.200	
41	4- -3		4.000	4.520	4.300	
42	4- -4		4.100	4.620	4.400	
43	4- -5		4.200	4.720	4.500	
44	4- -6		4.300	4.820	4.600	
45	4- -7		4.400	4.920	4.700	
46	4- -8		4.500	5.020	4.800	
47	4- -9		4.600	5.120	4.900	
48	5- -0		4.700	5.220	5.000	
49	5- -1		4.800	5.320	5.100	
50	1- -5		4.900	5.420	5.200	
51	5- -2		5.000	5.520	5.300	
52	5- -3		5.100	5.620	5.400	
53	5- -4		5.200	5.720	5.500	
54	5- -5		5.300	5.820	5.600	
55	1- -7		5.400	5.920	5.700	
56	5- -6		5.500	6.020	5.800	
57	5- -7		5.600	6.120	5.900	
58	5- -8		5.700	6.220	6.000	
59	5- -9		5.800	6.320	6.100	
60	1- -6	△	5.900	6.420	6.200	
30	9- -2	△	2.900	3.420	3.200	
35	9- -3	△	3.400	3.920	3.700	
25	9- -4	△	2.500	3.020	2.800	
20	8- -6	△	1.900	2.420	2.200	

POS	PART No.	DIM "J"	DIM "H"	MATERIAL	REMARKS
15	6-116975-1	1.700	1.400	△	KEYING
20	6- -2	2.200	1.900	↑	HOLE
21	6- -3	2.300	2.000		ONE END
22	6- -4	2.400	2.100		END
23	6- -5	2.500	2.200		
24	6- -6	2.600	2.300		
25	2- -7	2.700	2.400		
26	6- -8	2.800	2.500		
27	6- -9	2.900	2.600		
28	6- -0	3.000	2.700		
29	7- -1	3.100	2.800		
30	7- -2	3.200	2.900		
31	7- -3	3.300	3.000		
32	7- -4	3.400	3.100		
33	7- -5	3.500	3.200		
34	7- -6	3.600	3.300		
35	7- -7	3.700	3.400		
36	7- -8	3.800	3.500		
37	7- -9	3.900	3.600		
38	7- -0	4.000	3.700		
39	8- -1	4.100	3.800		
40	8- -2	4.200	3.900		
45	8- -3	4.700	4.400		
50	8- -4	5.200	4.900		
55	8- -5	5.700	5.400		
60	8- -6	6.200	5.900	△	

POS	PART No.	DIM "F"	DIM "H"	MATERIAL	REMARKS
10	116975-1	1.000	.900	△	No KEYING HOLES
15	8- -7	1.500	1.400	↑	
20	8- -2	2.000	1.900		
25	8- -8	2.500	2.400		
30	8- -3	3.000	2.900		
35	8- -9	3.500	3.400		
40	8- -4	4.000	3.900		
45	8- -5	4.500	4.400		
50	8- -6	5.000	4.900		
55	8- -7	5.500	5.400		
60	9- -0	6.000	5.900		
38	9- -1	3.800	3.700		
36	9- -2	3.600	3.500		
28	9- -3	2.800	2.700	△	

POS.	PART NO.	DIM. 'J'	DIM. 'H'	MAT'L.	REMARKS
27	9-116975-7	2.700	2.600	△	NO KEYING HOLES



9-116975-2 SUPERSEDED BY 1-116975-3  
 9-116975-3 SUPERSEDED BY 1-116975-8  
 9-116975-4 SUPERSEDED BY 2-116975-4  
 8-116975-6 " " 1-116975-2

UNLESS OTHERWISE SPECIFIED DIMENSIONS ARE IN INCHES. TOLERANCES ON: DECIMALS ± ANGLES ±		CONTRACT NO DR J. Nagel 7-29-76		PART NO	
MATERIAL —		CHK T. Stilleman 3/18/81		NAME ECONOMATE II HOUSING RECEPTACLE (.100 x .100)	
FINISH —		APPD J. Michael 3-18-81		SIZE CODE IDENT NO DRAWING NO C 00779 116975	
		OTHER APPD		REV U1	
				SCALE — SHEET 2 of 2	

## X-ON Electronics

Largest Supplier of Electrical and Electronic Components

*Click to view similar products for [Standard Card Edge Connectors](#) category:*

*Click to view products by [TE Connectivity](#) manufacturer:*

Other Similar products are found below :

[6565204-6](#) [PKC-156](#) [1437274-4](#) [147889-1](#) [1489165-4](#) [1-582587-1](#) [1-582589-1](#) [2-6437275-9](#) [284-0102-12100](#) [306022901000000](#) [307-012-502-202](#) [307-024-526-201](#) [307-056-520-300](#) [307-080-526-208](#) [245-062-520-350](#) [287-0032-12101](#) [306-028-525-102](#) [306-240-318](#) [307-036-502-202](#) [307-036-521-301](#) [307-072-526-202](#) [345-060-559-303](#) [368-004-520-201](#) [392-008-559-201](#) [534671-1](#) [5-530501-5](#) [341-240-317](#) [345-029-520-300](#) [345-030-500-301](#) [345-044-500-300](#) [345-220-058](#) [346-240-318](#) [357-030-526-201](#) [387-012-523-300](#) [395-044-520-300](#) [395-100-524-300](#) [50-12B-10](#) [50-6SN-5](#) [09-07-2032](#) [10035388-106LF](#) [10035388-802LF](#) [10122859-009LF](#) [530555-1](#) [EBT156-15A2X](#) [2007209-1](#) [5-678046-1](#) [1766200-1](#) [650231-6](#) [650289-1](#) [73726-0005](#)