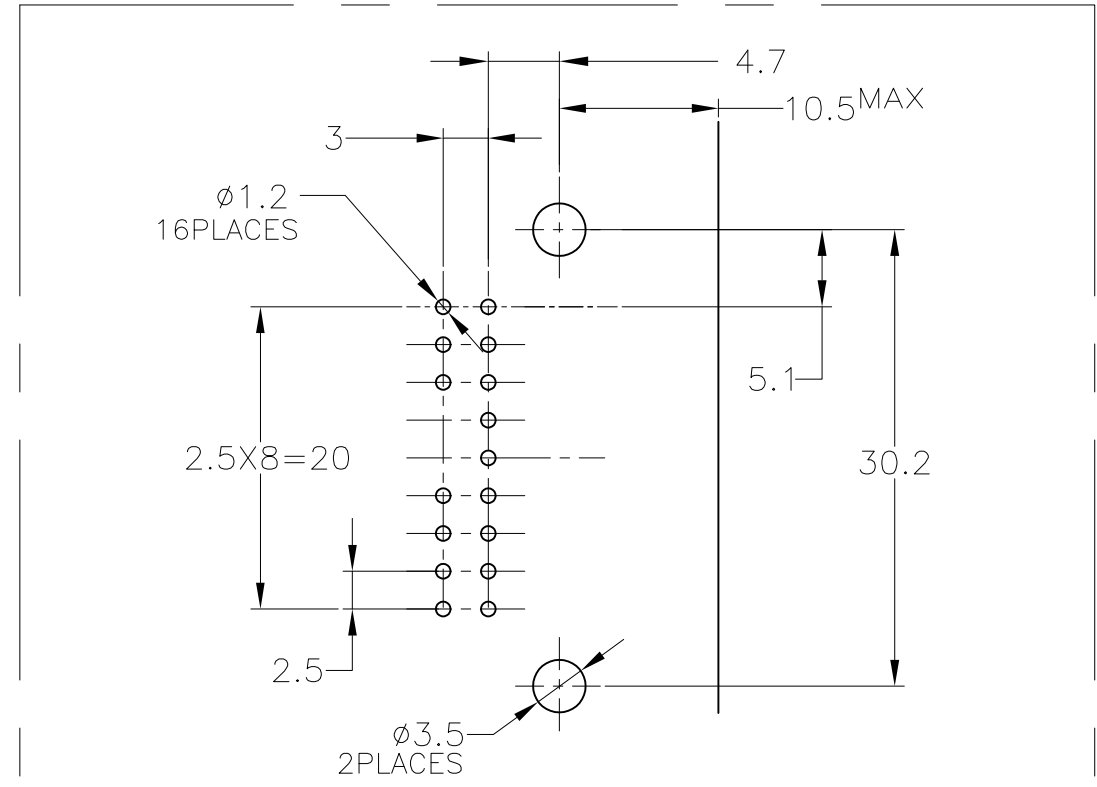
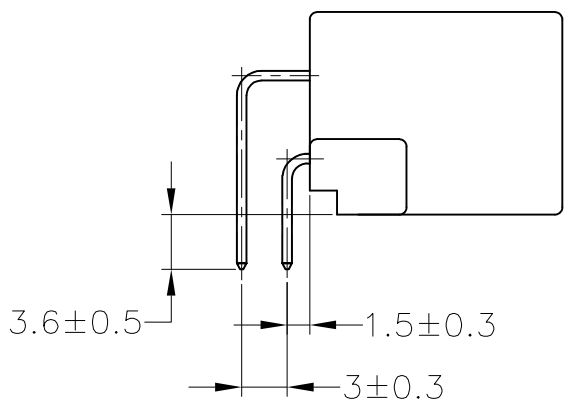
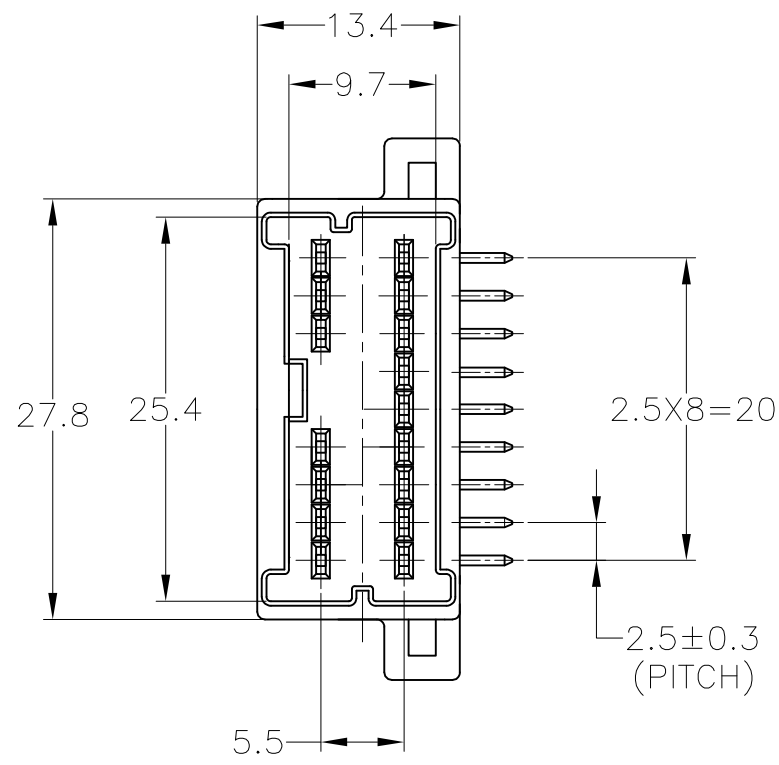
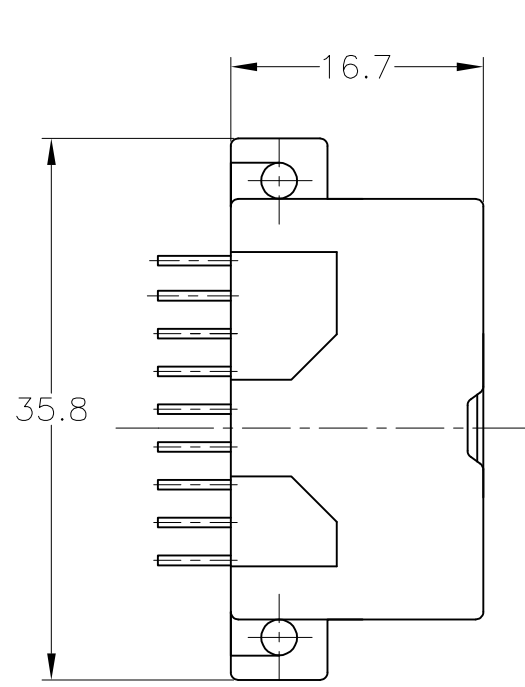


THIS DRAWING IS UNPUBLISHED. RELEASED FOR PUBLICATION
 © COPYRIGHT 2003 BY TYCO ELECTRONICS CORPORATION. ALL RIGHTS RESERVED.

LOC	DIST	REVISIONS					
J	—	P	LTR	DESCRIPTION	DATE	DWN	APVD
		A4	OBSOLETE -2	ECR-07-023693	31OCT07	AY	HY



MOUNTING DIMENSIONS FOR P.C.BOARD
 プリント基板取付け穴寸法
 (TOLERANCES: ±0.1
 PITCH TOLERANCES MUST NOT ACCUMULATE.)
 (公差: ±0.1 ピッチ公差は累積されないこと)
 P.C.BOARD THICKNESS
 基板厚: 1.6mm

- 1 RECOMMENDED MOUNTING SCREW: PAN-HEADED, TYPE 2 TAPPING SCREW OF 3DIA X 6LENGTH (JIS B1115,B1122), TIGHTENING TORQUE: 39.2N-cm MAX
- 1 推奨取付ネジ: JIS B1115, B1122 タッピングねじ, なべ2種, 呼び径3, 長さ6, 締付トルク: 39.2N-cm 以下

TOLERANCE UNLESS OTHERWISE SPECIFIED: 一般公差

0 < x ≤ 10	: ±0.2
10 < x ≤ 30	: ±0.25
30 < x ≤ 100	: ±0.3
ANGLE ; 角度	: ±3°

1123371-1	SELECTIVE-TIN (MATTE)	SELECTIVE-TIN (BRIGHT)	NATURAL	1123419-3
OBSOLETE SEE DRAWING 1123419-2				
1123371-1	PRE-TIN		NATURAL	1123419-1
MATING HOUSING PART NUMBER 嵌合相手型番	SOLDERING SIDE 半田付け部	CONTACT SUDE 嵌合部側	COLOR 色	PART NUMBER 型番
	CONTACT FINISH コンタクト仕上			

THIS DRAWING IS A CONTROLLED DOCUMENT.

DIMENSIONS: 単位: 耗 MM	TOLERANCES UNLESS OTHERWISE SPECIFIED: 一般公差	DWN A.YAMAGUCHI 25JUL03	Tyco Electronics AMP K.K. Kawasaki, Japan	
MATERIAL 材料 PBT	FINISH 仕上 色: SEE TABLE	CHK K.BETSUI 25JUL03	NAME 名称 040III MULTILOCK CONNECTOR	
		APVD K.BETSUI 25JUL03	16POS CAP HOUSING ASSEMBLY WIRE TO BOARD H-TYPE	
		PRODUCT SPEC 製品規格 108-5603	SIZE A3	CAGE CODE 00779
		APPLICATION SPEC 取付適用規格	DRAWING NO 番号 G-1123419	RESTRICTED TO -
		WEIGHT 4.4 g	SCALE 尺度 2:1	SHEET 1 OF 1
		CUSTOMER DRAWING		REV A4

X-ON Electronics

Largest Supplier of Electrical and Electronic Components

Click to view similar products for [Automotive Connectors](#) category:

Click to view products by [TE Connectivity](#) manufacturer:

Other Similar products are found below :

[003-018-000](#) [60403001](#) [60993906-B](#) [M902-2131](#) [M902-2161](#) [M902-2344](#) [72.330.1035.1](#) [73.353.4028.0](#) [F119300-B](#) [F166900](#) [F258300-B](#)
[F358300-B](#) [F407400](#) [F444110](#) [F487000](#) [F509500B-B](#) [827153-1](#) [8N1515-32-24P](#) [9-1326729-8](#) [925474-1](#) [928905-1](#) [964562-4](#) [968782-1](#)
[GT17SA-8DS-HU](#) [98891-1012](#) [98947-1016](#) [12004147](#) [12004475-L](#) [12010290](#) [12010309-B](#) [12015454](#) [12020219-B](#) [12041318-B](#) [12052225-](#)
[L](#) [12052466](#) [12064869](#) [12004327-B](#) [12015308](#) [12015384](#) [12015909](#) [1-21030-1](#) [12041254](#) [12041318](#) [12047946-B](#) [12047957](#) [12047957-L](#)
[12059473](#) [12066261](#) [12110546](#) [12110546-B](#)