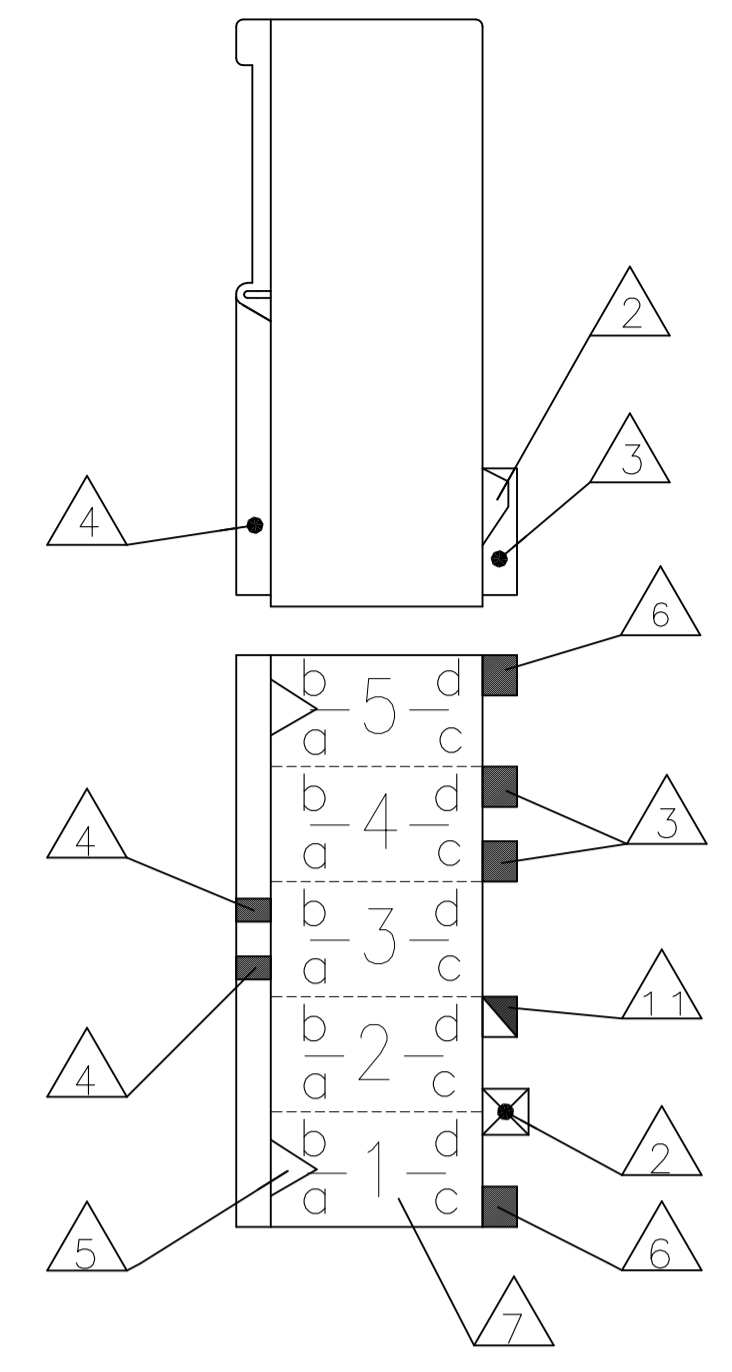
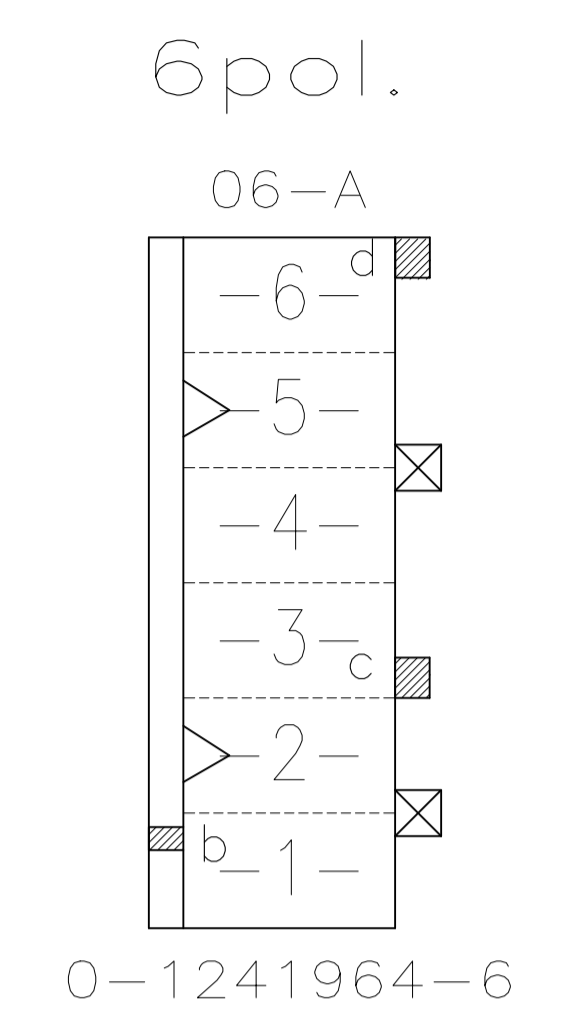
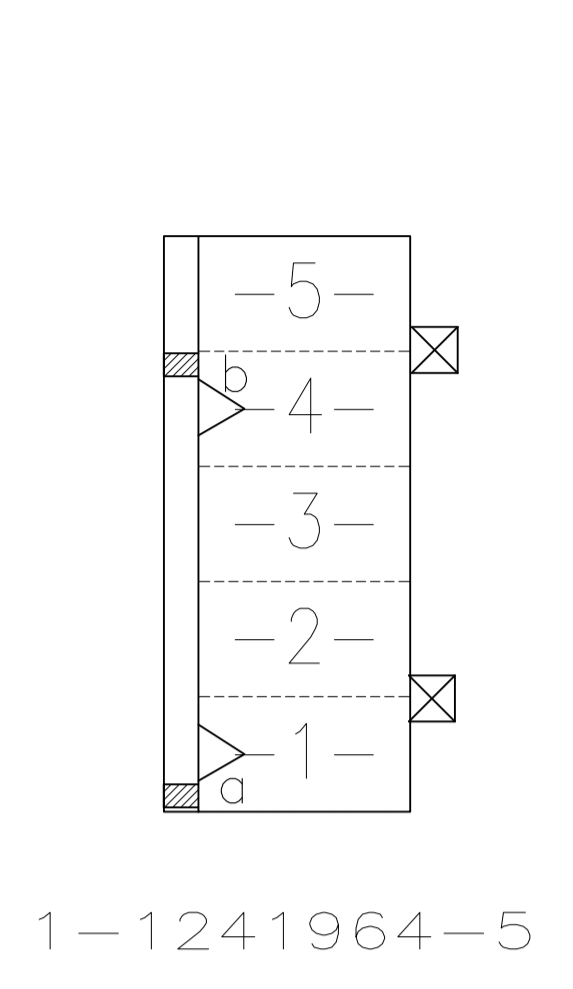
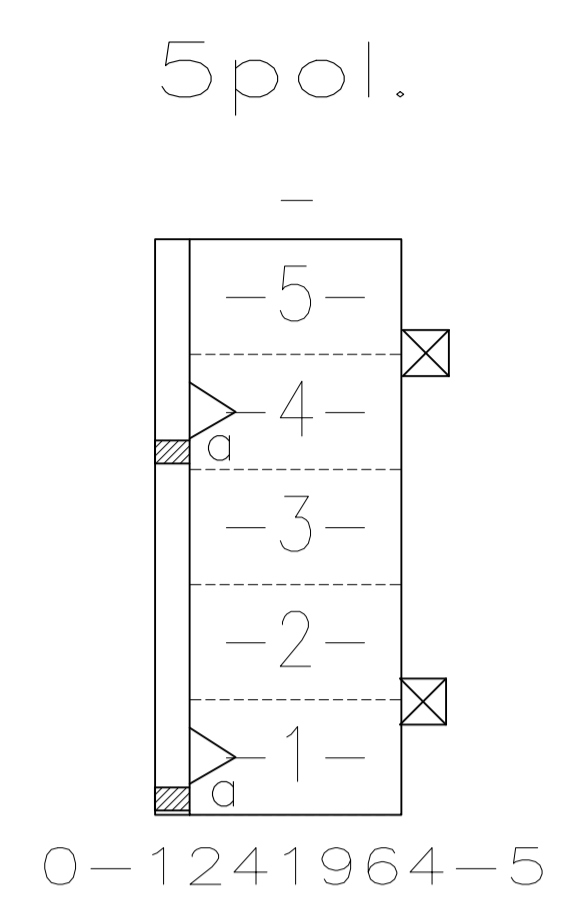
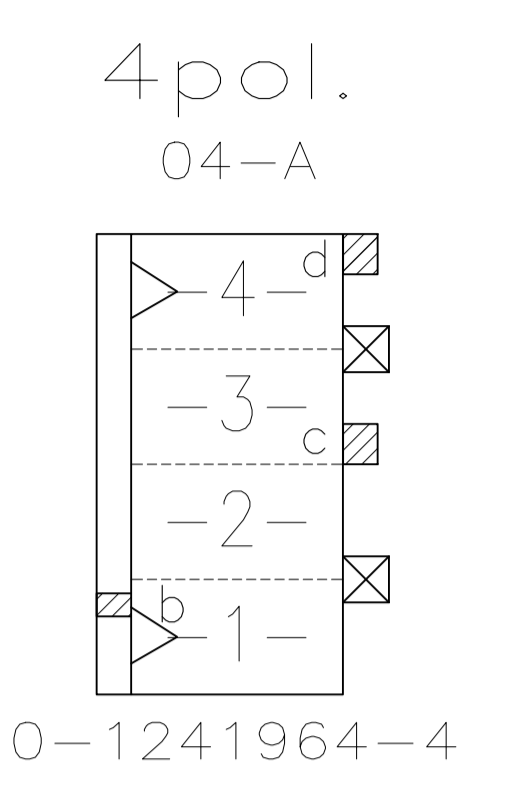
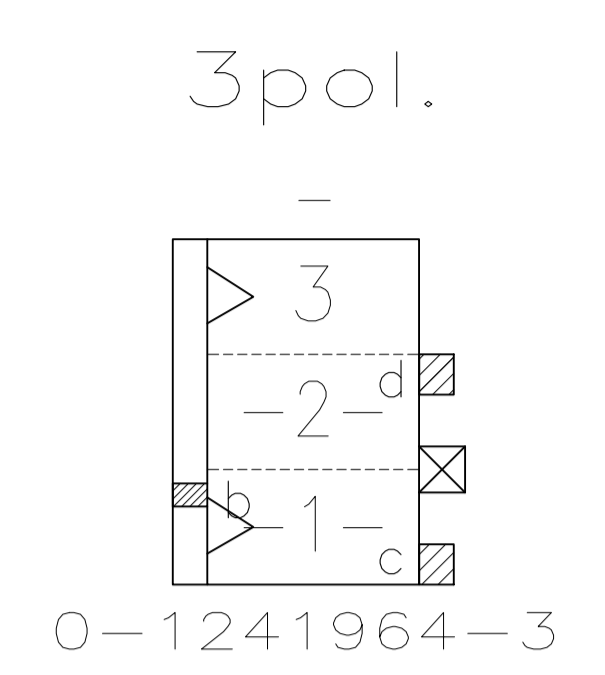
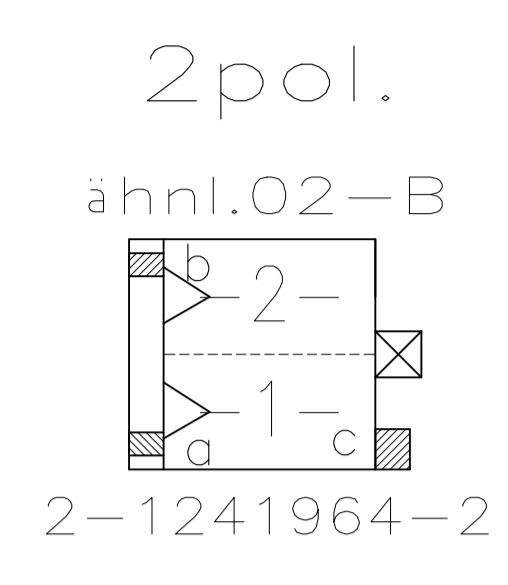




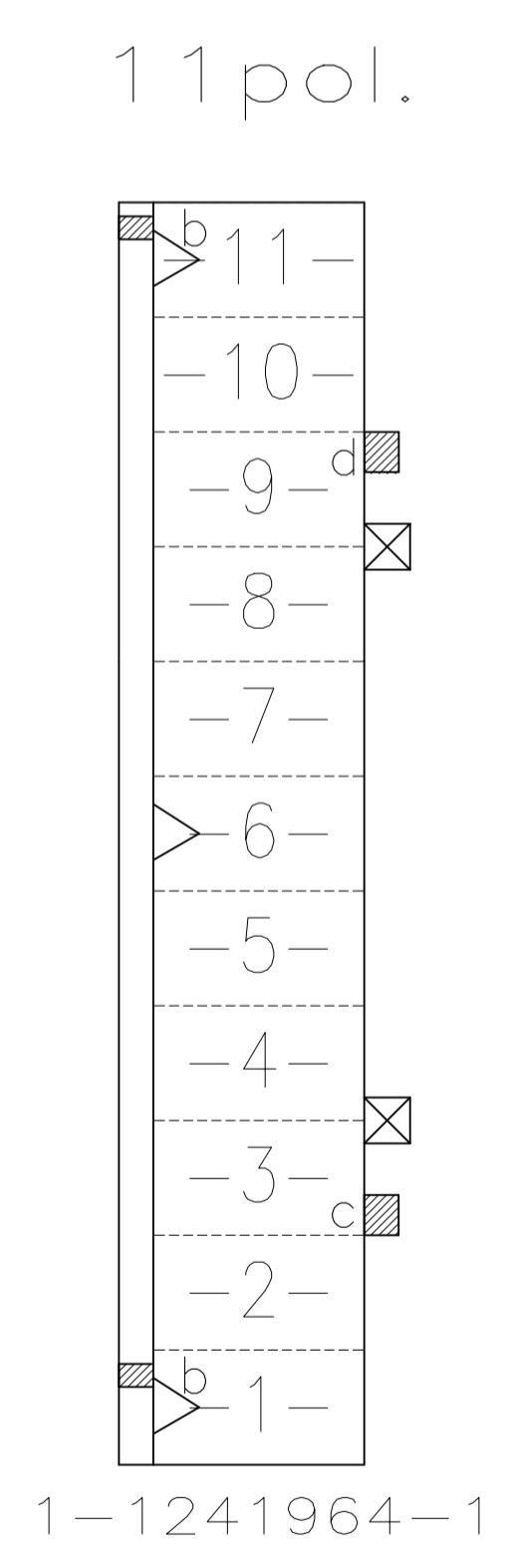
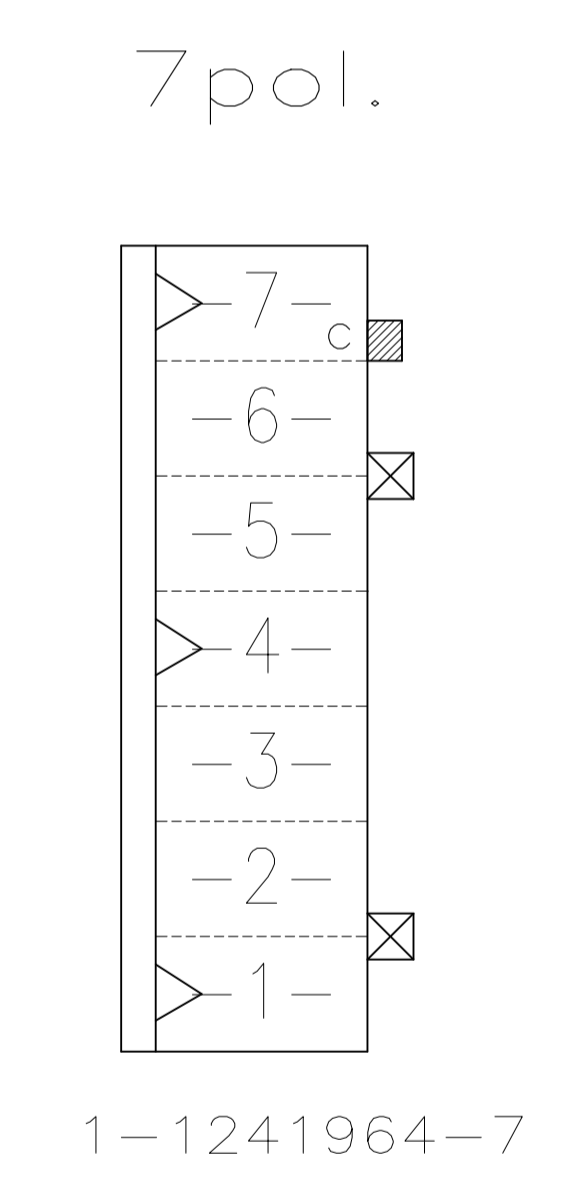
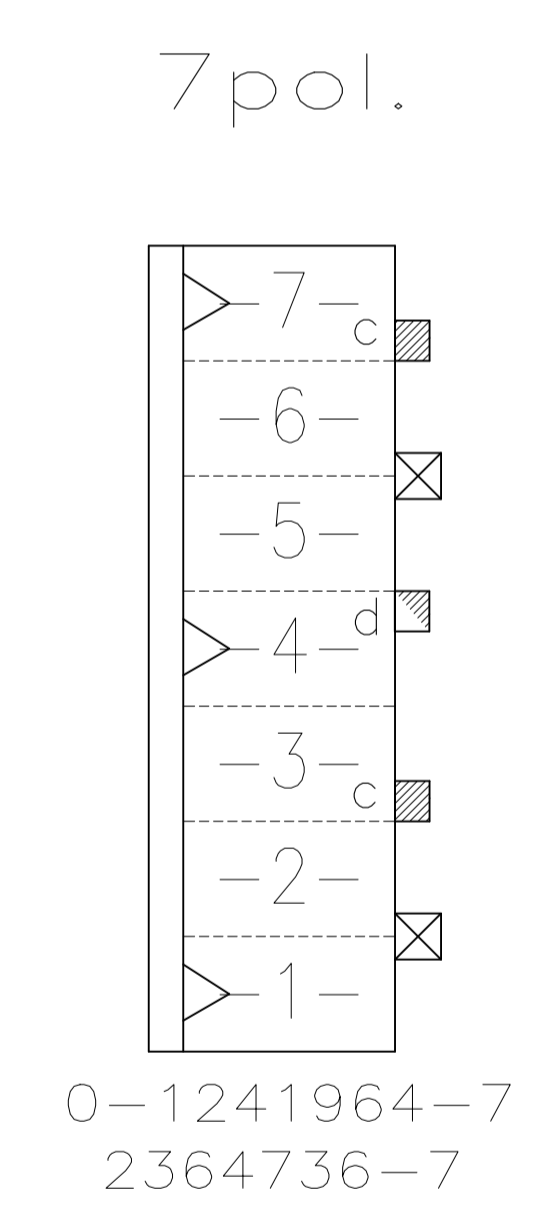
REVISIONS					
REV	DATE	DESCRIPTION	BY	CHK	APPV
-	-	SEE SHEET 1	-	-	-



**Darstellung:**  
 Lage der Kodier- und  
 Polarisierungsrippen und  
 Rastfedern am Gehäuse

**DESCRIPTION:**  
 POSITION OF KEYING RIB AND THE  
 LOCKING LATCH AT THE HOUSINGS

TE PART NUMBER (OPTIONAL)



TE PART NO.	POS.	DIM A	DIM B	COLOUR	MATERIAL	MATED WITH
2364736-7	7	35	30	BLUE	PA66 $\Delta_9/\Delta_8$ UL94-V0 & GWEPT 750°C n.f.	$\Delta_5/\Delta_6$
-	-	-	-	-	-	-
1-1241964-1	11	55	50	NATURE/natur	$\Delta_{12}$	$\Delta_5/\Delta_6$
1-1241964-7	7	35	30	NATURE/natur	$\Delta_{12}$	$\Delta_5/\Delta_6$
0-1241964-7	7	35	30	NATURE/natur	$\Delta_{12}$	$\Delta_5/\Delta_6$
-	-	-	-	-	-	-
0-1241964-6	6	30	25	NATURE/natur	$\Delta_{12}$	$\Delta_5/\Delta_6$
-	-	-	-	-	-	-
1-1241964-5	5	25	20	NATURE/natur	$\Delta_{12}$	$\Delta_5/\Delta_6$
0-1241964-5	5	25	20	NATURE/natur	$\Delta_{12}$	$\Delta_5/\Delta_6$
0-1241964-4	4	20	15	NATURE/natur	$\Delta_{12}$	$\Delta_5/\Delta_6$
-	-	-	-	-	-	-
-	-	-	-	-	-	-
-	-	-	-	-	-	-
-	-	-	-	-	-	-
-	-	-	-	-	-	-
-	-	-	-	-	-	-
-	-	-	-	-	-	-
-	-	-	-	-	-	-
-	-	-	-	-	-	-
0-1241964-3	3	15	10	NATURE/natur	$\Delta_{12}$	$\Delta_5/\Delta_6$
-	-	-	-	-	-	-
2-1241964-2	2	10	5	NATURE/natur	$\Delta_{12}$	$\Delta_5/\Delta_6$
Bestell-Nr.	Pol-Zahl	Maß A	Maß B	Farbe	Material	Gegenstecker $\Delta_{14}$
PART NO.	POS.	DIM A	DIM B	COLOUR	MATERIAL	MATED WITH $\Delta_{14}$

Stückliste/PARTS LIST

THIS DRAWING IS A CONTROLLED DOCUMENT.		DIN Mahnke, B 26-NOV-02	TE Connectivity Ltd.
DIMENSIONS: mm		CHK Stredak, F 29-NOV-02	
TOLERANCES UNLESS OTHERWISE SPECIFIED:		NAME Fleischer, B 30-NOV-02	2-11 POS. STANDARD-TIMER HOUSING WITH INTERIOR LOCKING, PITCH 5mm
0. PLC ± -		PRODUCT SPEC 108-18049-1	
1. PLC ± 0.2mm		APPLICATION SPEC	SIZE A1
2. PLC ± -		WEIGHT 0	CAGE CODE 00779
3. PLC ± -		DRAWING NO. 1241964	RESTRICTED TO
4. PLC ± -		CUSTOMER DRAWING	SCALE 5:1
ANGLES ± # 1		SHEET 2 OF 2	REV A14

## X-ON Electronics

Largest Supplier of Electrical and Electronic Components

*Click to view similar products for [Automotive Connectors](#) category:*

*Click to view products by [TE Connectivity](#) manufacturer:*

Other Similar products are found below :

[003-018-000](#) [60403001](#) [60993906-B](#) [M902-2131](#) [M902-2161](#) [M902-2344](#) [72.330.1035.1](#) [73.353.4028.0](#) [F119300-B](#) [F166900](#) [F258300-B](#)  
[F358300-B](#) [F407400](#) [F444110](#) [F487000](#) [F509500B-B](#) [827153-1](#) [8N1515-32-24P](#) [9-1326729-8](#) [925474-1](#) [928905-1](#) [964562-4](#) [968782-1](#)  
[GT17SA-8DS-HU](#) [98891-1012](#) [98947-1016](#) [12004147](#) [12004475-L](#) [12010290](#) [12010309-B](#) [12015454](#) [12020219-B](#) [12041318-B](#) [12052225-](#)  
[L](#) [12052466](#) [12064869](#) [12004327-B](#) [12015308](#) [12015384](#) [12015909](#) [1-21030-1](#) [12041254](#) [12041318](#) [12047946-B](#) [12047957](#) [12047957-L](#)  
[12059473](#) [12066261](#) [12110546](#) [12110546-B](#)