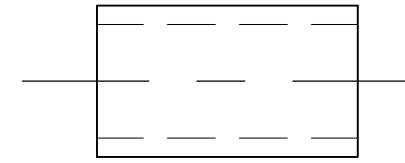
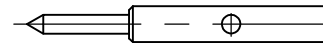
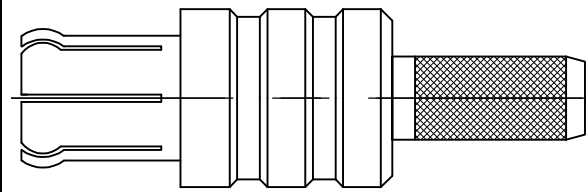


THIS DRAWING IS UNPUBLISHED. RELEASED FOR PUBLICATION NOV. 2004.
 © COPYRIGHT 2004 BY TYCO ELECTRONICS CORPORATION. ALL RIGHTS RESERVED.

LOC		DIST		REVISIONS			
P	LTR	DESCRIPTION	DATE	DWN	APVD		
-	-	SEE SHEET 1	-	-	-		

COMPONENTS

ITEM NO.	DESCRIPTION	QUANTITY
2, 3 & 5	MAIN BODY	
1	CENTRE CONTACT	
4	PUSHER SLEEVE	

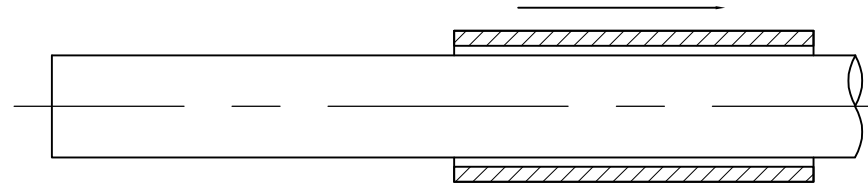


ASSEMBLY INSTRUCTION

CABLES: RG174A/U, 188A/U, 316/U, URM95, KX3B, KX22A

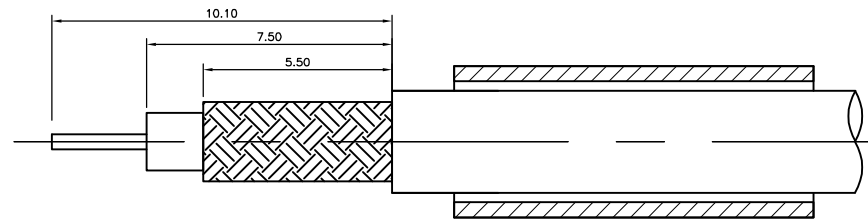
STEP 1

1. SLIDE METAL CRIMP FERRULE OVER CABLE



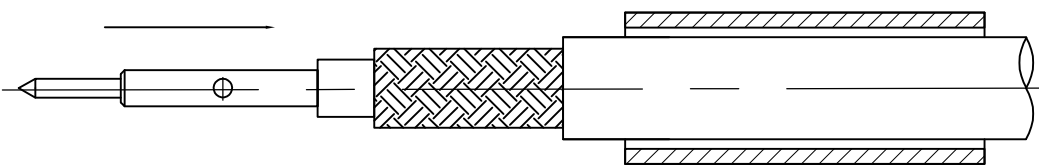
STEP 2

1. STRIP CABLE TO DIMENSIONS AS SHOWN



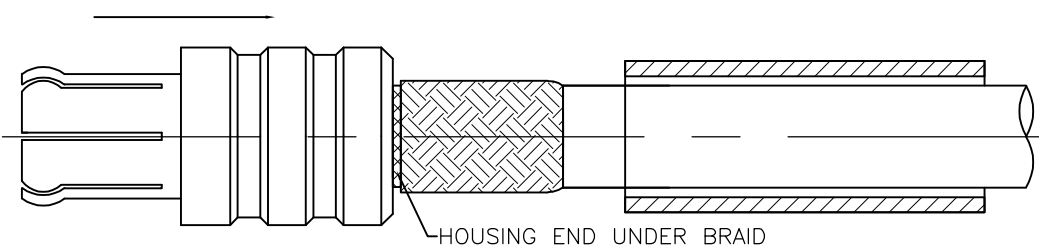
STEP 3

1. FIT CONTACT OVER CENTRE CONDUCTOR TO BUTT AGAINST DIELECTRIC.
2. CRIMP CONTACT USING TOOL AS NOTED ON PAGE 1 NOTE 5



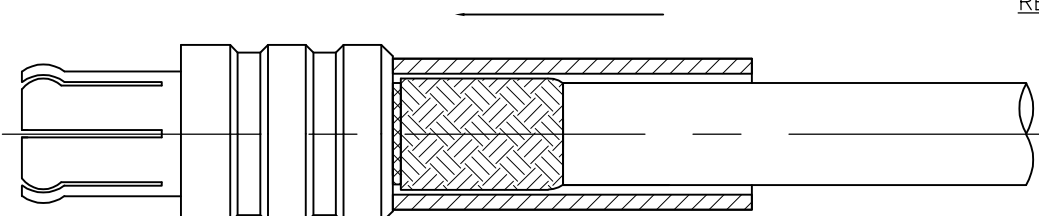
STEP 4

1. PRESS SUB-ASSEMBLY INTO BODY, UNTIL CONTACT IS FULLY LOCATED BY AN AUDIBLE CLICK.
2. ENSURE THAT KNURLED HOUSING INSERTS BETWEEN THE DIELECTRIC AND CABLE BRAID.

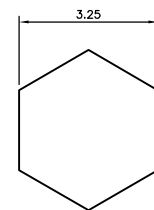


STEP 5

1. SLIDE CRIMP FERRULE ALONG THE CABLE UNTIL IT BUTTS AGAINST THE HOUSING BODY.
2. CRIMP SLEEVE USING TOOL AS NOTED ON PAGE 1 NOTE 4
3. CRIMP DIMENSION AS SHOWN



RECOMMENDED CRIMP SLEEVE A/F HEX



THIS DRAWING IS A CONTROLLED DOCUMENT.

DWN JSANDWELL 09NOV04	Tyco Electronics Corporation Bideford, EX39 4HE
CHK S.PARLOW 09NOV04	
APVD F.WHEELER-KING 09NOV04	
PRODUCT SPEC	
APPLICATION SPEC	NAME MCX STRAIGHT PLUG CRIMP 50 OHMS RG174, 188, 316, URM95, KX3B, 22A
WEIGHT -	SIZE A2 CAGE CODE 00779 DRAWING NO C=1337580 RESTRICTED TO -
CUSTOMER DRAWING	SCALE NTS SHEET 2 OF 2 REV E

1337580

X-ON Electronics

Largest Supplier of Electrical and Electronic Components

Click to view similar products for [RF Connectors / Coaxial Connectors](#) category:

Click to view products by [TE Connectivity](#) manufacturer:

Other Similar products are found below :

[8915-1511-000](#) [89674-0827](#) [6001-7071-019](#) [6002-7051-003](#) [6002-7551-202](#) [6059674-1](#) [619550-1](#) [630059-000](#) [M39030/3-01N](#) [6500-7071-046](#) [6769](#) [CX050L2AQ](#) [7002-1541-010](#) [7002-1542-011](#) [7004-1512-000](#) [7009-1511-004](#) [7010-1511-000](#) [7029-1511-060](#) [7101-1541-010](#) [7101-1571-002](#) [7145-1521-002](#) [7203-1571-003](#) [7209-1511-011](#) [7210-1511-015](#) [7210-1511-019](#) [73137-5015](#) [73216-2241](#) [73404-2300](#) [7405-1521-005](#) [7405-1521-802](#) [8527](#) [8547](#) [FS11V](#) [877931](#) [8808-1511-001](#) [9049-9513-000](#) [9074-9513-000](#) [9101-9573-002](#) [910A205F](#) [9130-9573-002](#) [PL11SC-026](#) [PL375-33](#) [PL40-5](#) [PL74C-221](#) [PL75MC-217](#) [PL803-7](#) [980-8666-005](#) [1200690078](#) [1-201144-1](#) [R107003010W](#)