

LOC		DIST		REVISIONS			
P	LTR	DESCRIPTION	DATE	DMN	APVD		
01		REVISED PER ECO-10-022549	04NOV10	HMR	CR		

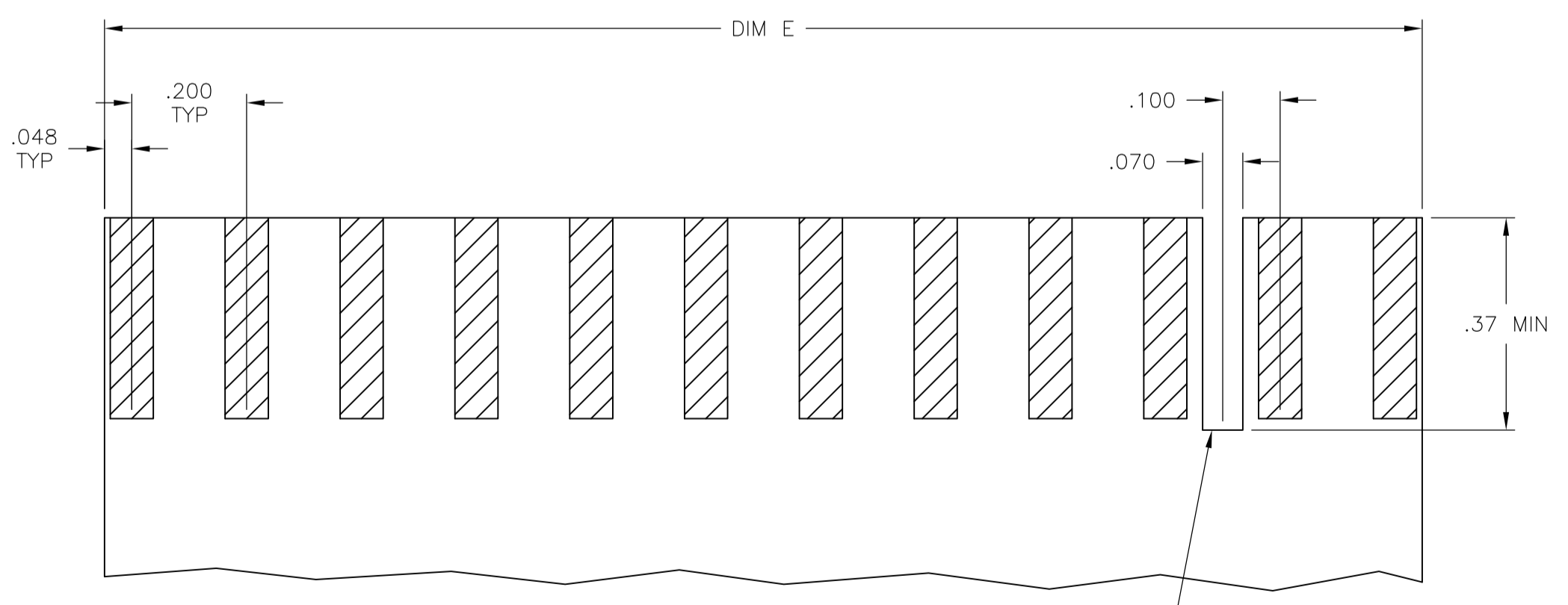
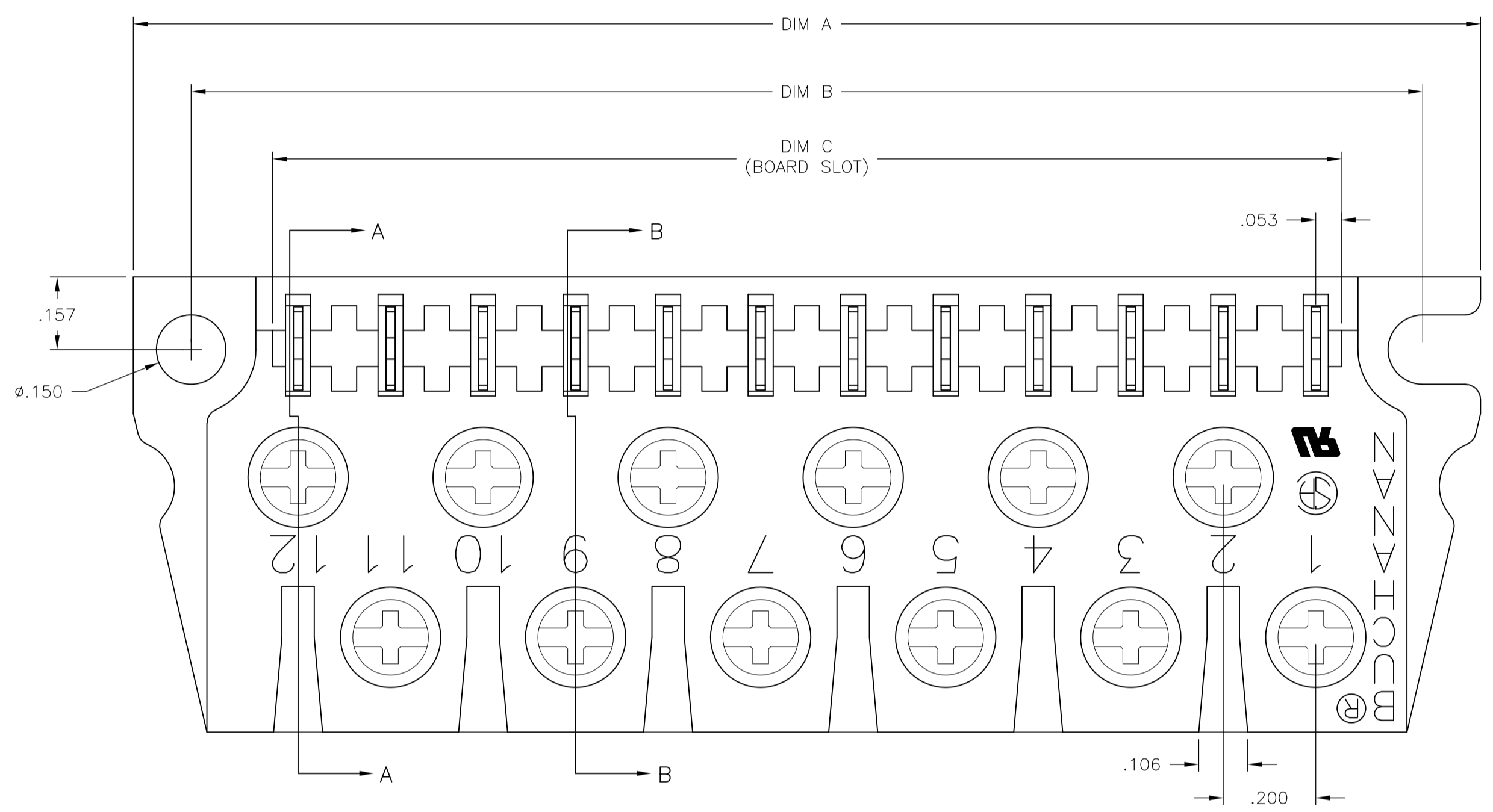
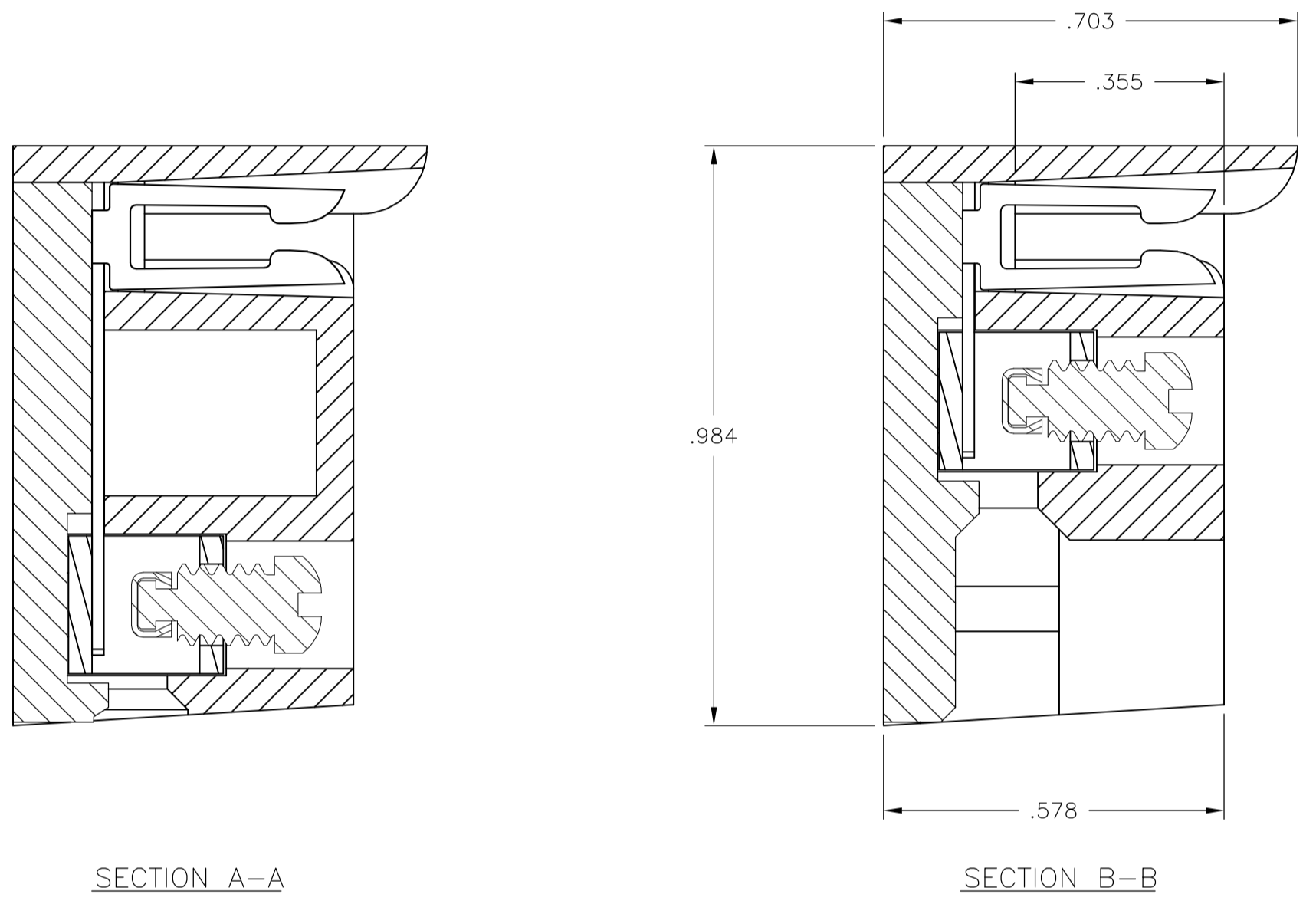
**NOTES:**

**MATERIAL:**  
 HOUSING: POLYESTER, UL94V-0, WHITE.  
 TUBULAR CONTACT: BRASS.  
 PC CONTACT: PHOSPHOR BRONZE, GOLD OVER NICKEL PLATE.  
 SCREW: 6-32, STEEL, ZINC CHROMATE FINISH.  
 CLAMP: BRASS

**MECHANICAL:**  
 PITCH: .200"  
 WIRE STRIP LENGTH: .25"  
 RECOMMENDED TIGHTENING TORQUE: 5-8 IN.-LBS.  
 BOARD INSERTION FORCE: 5.6 OZ. PER CKT.  
 BOARD SEPARATION FORCE: 1.8 OZ. PER CKT

**ELECTRICAL:**  
 MAX CURRENT: 10A.  
 OPERATING VOLTAGE: 250V.  
 DIELECTRIC WITHSTAND: 2500V  
 WIRE RANGE: #12 STRANDED ONLY.  
 INSULATION RESISTANCE:  
 CONTACT RESISTANCE:

**ENVIRONMENTAL:**  
 OPERATING TEMP.: -65°C TO +140°C.



OPTIONAL POLARIZING NOTCH  
 LOCATION PER CUSTOMER REQUIREMENT  
 USE OPTIONAL POLARIZING KEY CAT. NO. PC17

**RECOMMENDED PCB LAYOUT**

7.095	7.110	7.470	7.720	36	PCB1A36A	1-1437410-6
5.895	5.910	6.270	6.520	30	PCB1A30A	1-1437410-4
4.695	4.710	5.070	5.320	24	PCB1A24A	1-1437410-2
3.495	3.510	3.870	4.120	18	PCB1A18A	1-1437410-0
2.295	2.310	2.670	2.920	12	PCB1A12A	1437410-8
DIM E	DIM C	DIM B	DIM A	NO. OF POS.	CATALOG NUMBER	PART NUMBER

THIS DRAWING IS A CONTROLLED DOCUMENT.

DIMENSIONS: INCHES	TOLERANCES UNLESS OTHERWISE SPECIFIED:	DIN S SCHLEGEL 16JUN04	Tyco Electronics Corporation Harrisburg, PA 17105-3608
0 PL ± -	1 PL ± -	6/16/04	
2 PL ± .02	3 PL ± .005	APVD S YODER 6/16/04	Tyco Electronics NAME
4 PL ± ± 1°	ANGLES ± ± 1°	PRODUCT SPEC	
MATERIAL	FINISH	APPLICATION SPEC	PCB1A ASSEMBLY SELECT GOLD PLATE
		SIZE	CAGE CODE
		WEIGHT	DRAWING NO
		A1 00779 C=1437410-8	
CUSTOMER DRAWING		SCALE	SHEET
		4:1	1 OF 1
			REV 01

## X-ON Electronics

Largest Supplier of Electrical and Electronic Components

*Click to view similar products for [Pluggable Terminal Blocks](#) category:*

*Click to view products by [TE Connectivity](#) manufacturer:*

Other Similar products are found below :

[57.404.7553](#) [57.504.0053.7](#) [57.510.0053](#) [57.910.6153](#) [01.112.1453](#) [CTB932VE/6](#) [MC 1.5/ 6-ST-3.5 GY AU](#) [ET02015000J0G](#) [734-104](#) [734-302](#) [734-304](#) [8-141-P](#) [FKCT 2.5/ 3-ST KMGY](#) [860505](#) [860508](#) [860516](#) [860810](#) [861908](#) [GBPACX-12](#) [93.731.4953.0](#) [PV05-5,08-K](#) [PVP02-5,00](#) [PVP04-3,50](#) [PVS02-5,00](#) [1-1986160-3](#) [H-10](#) [1546228-5](#) [ELFP03110](#) [ELVP03100](#) [ELXH03100](#) [ELXP041G0](#) [ELXT046G0](#) [1700101](#) [1700410](#) [1703243](#) [1703634](#) [1705229](#) [1710175](#) [1714537](#) [1717806](#) [1719600](#) [1728941](#) [1729386](#) [1734692](#) [1734795](#) [1736036](#) [1740194](#) [1740291](#) [1740628](#) [1740990](#)