

THIS DRAWING IS UNPUBLISHED. RELEASED FOR PUBLICATION  
 © COPYRIGHT - By - ALL RIGHTS RESERVED.

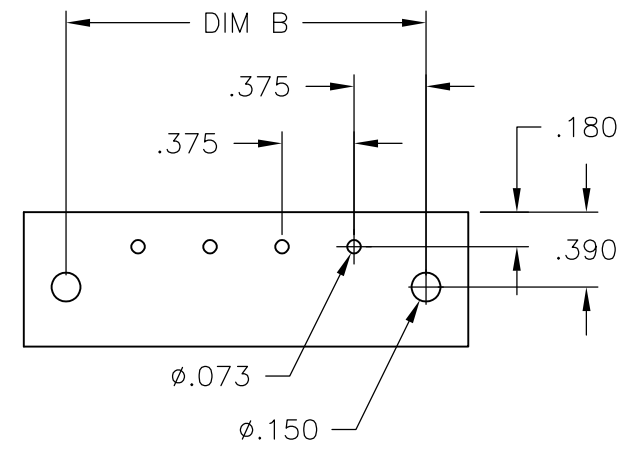
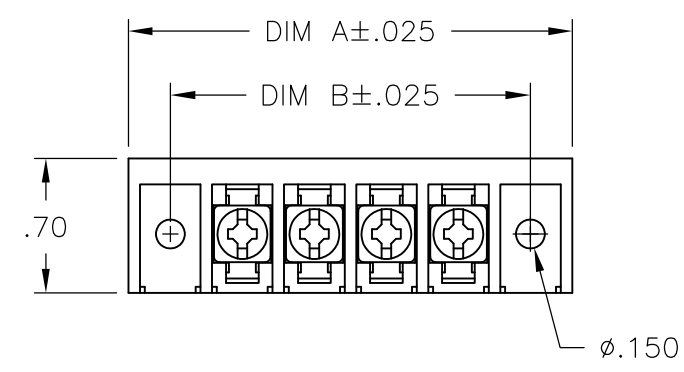
LOC	DIST	REVISIONS					
FT	0	P	LTR	DESCRIPTION	DATE	DWN	APVD
			B3	REVISED PER ECO-11-005027	11MAR11	RK	HMR

**MATERIAL:**  
 HOUSING: THERMOPLASTIC, UL94V-0, BLACK.  
 TERMINALS: BRIGHT TIN PLATED, COPPER ALLOY.  
 SCREWS: 6-32, STEEL, ZINC PLATED WITH CLEAR CHROMATE.

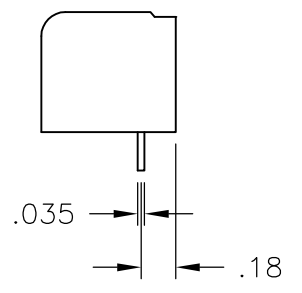
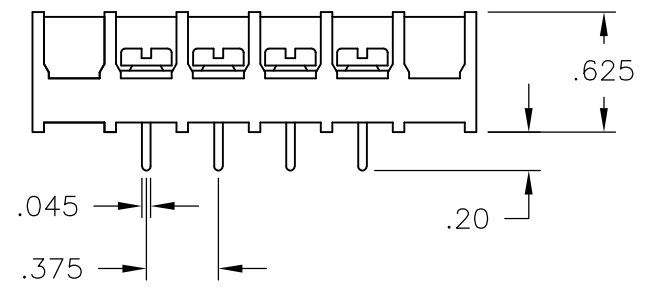
**ELECTRICAL:**  
 RATED CURRENT UL/CSA:  
 CLASS C: 25A, 300V.  
 CLASS D: 5A, 600V.  
 WIRE RANGE: 12-22 AWG

**MECHANICAL:**  
 RECOMMENDED TORQUE: 7 IN-LB.  
 OPERATING TEMP: 105°C MAX.

- 1 BOTH END POSITION HAVE SQUARE HOLES AND ARE LEFT OPEN.
- 2 SCREWS ARE CAPTIVATED.

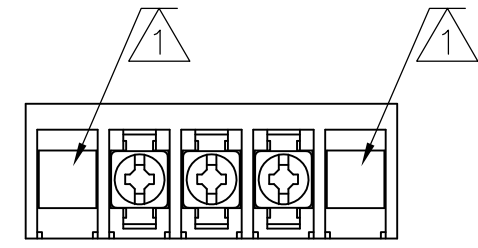


RECOMMENDED PCB LAYOUT

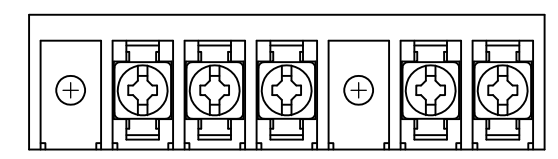


10.875	11.311	28	6PCV-28-008	1-1546686-2
10.500	10.936	27	6PCV-27-008	1-1546686-1
10.125	10.561	26	6PCV-26-008	1-1546686-0
9.750	10.186	25	6PCV-25-008	1546686-9
9.375	9.811	24	6PCV-24-008	1546686-8
9.000	9.436	23	6PCV-23-008	1546686-7
8.625	9.061	22	6PCV-22-008	1546686-6
8.250	8.686	21	6PCV-21-008	1546686-5
7.875	8.311	20	6PCV-20-008	7-1546158-4
7.500	7.936	19	6PCV-19-008	1546686-4
7.125	7.561	18	6PCV-18-008	1437654-9
6.750	7.186	17	6PCV-17-008	1546686-3
6.375	6.811	16	6PCV-16-672	9-1437653-3
6.375	6.811	16	6PCV-16-008	7-1546158-1
6.000	6.436	15	6PCV-15-008	7-1546158-0
5.625	6.061	14	6PCV-14-008	1546686-2
5.250	5.686	13	6PCV-13-008	6-1546158-8
4.875	5.311	12	6PCV-12-008	6-1546158-5
4.500	4.936	11	6PCV-11-008	6-1546158-3
4.125	4.561	10	6PCV-10-008	1546686-1
3.750	4.186	9	6PCV-09-008	6-1546158-0
3.375	3.811	8	6PCV-08-008	1-1437653-5
3.000	3.436	7	6PCV-07-008	5-1546158-7
2.625	3.061	6	6PCV-06-008	9-1437652-7
2.250	2.686	5	6PCV-05-1251	8-1437652-4
2.250	2.686	5	6PCV-05-008	8-1437652-3
1.875	2.311	4	6PCV-04-008	6-1437652-9
1.500	1.936	3	6PCV-03-008-OE	1-796988-3
1.500	1.936	3	6PCV-03-008	5-1437652-6
1.125	1.561	2	6PCV-02-008	4-1437652-1

DIM B	DIM A	NO. OF POS	CATALOG NUMBER	PART NO.
-------	-------	------------	----------------	----------



1-796988-3



8-1437652-4

THIS DRAWING IS A CONTROLLED DOCUMENT.

DIMENSIONS: INCHES	TOLERANCES UNLESS OTHERWISE SPECIFIED:	DWN S SCHLEGEL 4/25/03	TE Connectivity
	0 PLC ± -	CHK S YODER 4/25/03	
	1 PLC ± -	APVD S YODER 4/25/03	
MATERIAL	FINISH	PRODUCT SPEC	

6PCV-XX-008 ASSEMBLY

SIZE	CAGE CODE	DRAWING NO	RESTRICTED TO
A3	00779	C-4-1437652-1	-

CUSTOMER DRAWING SCALE NTS SHEET 1 OF 1 REV B3

## X-ON Electronics

Largest Supplier of Electrical and Electronic Components

*Click to view similar products for [Barrier Terminal Blocks](#) category:*

*Click to view products by [TE Connectivity](#) manufacturer:*

Other Similar products are found below :

[CR151D20104](#) [670A-RZ-15-KT20](#) [6C1N03](#) [6PCR-02](#) [6PCR-02-008](#) [6PCR-05-008](#) [6PCR-08-008](#) [6PCR-09-008](#) [6PCR-13-006](#) [6PCR-15-006](#) [6PCR-21-006](#) [6PCV-06-008](#) [6PCV-06-716](#) [6PCV-09-001](#) [6PCV-10-009](#) [6PCV-15-008](#) [6PCV-17-1206](#) [6PCV-20-323](#) [6PCV-20-720](#) [6PCV-30-006](#) [6STR-06-006](#) [6STR-08-006](#) [6STR-12-008](#) [6STR-13-006](#) [6STR-14-008](#) [6STR-16-008](#) [6STR-17-008](#) [6STR-21-008](#) [6STR-25-008](#) [6STR-27-008](#) [6STV-03-006](#) [6STV-03-008](#) [6STV-04-006](#) [6STV-09-006](#) [6STV-10-006](#) [6WWR-03-693](#) [6WWV-12-008](#) [72212603](#) [72504-C-50](#) [72506-C](#) [72507-C-50](#) [73203](#) [75505-C](#) [75505-C-50](#) [75510-C](#) [77010-50](#) [7C1N08](#) [812-GP-3/4ST-09](#) [8-1437402-5](#) [8PCR-06-006](#)