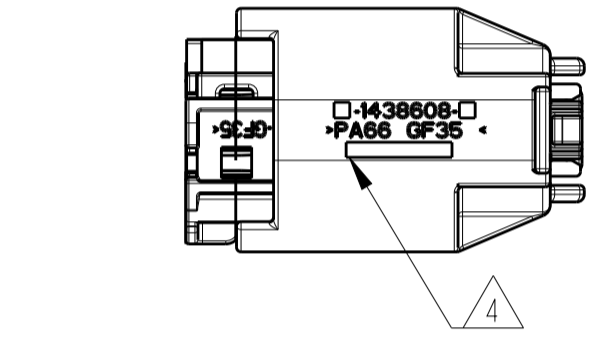
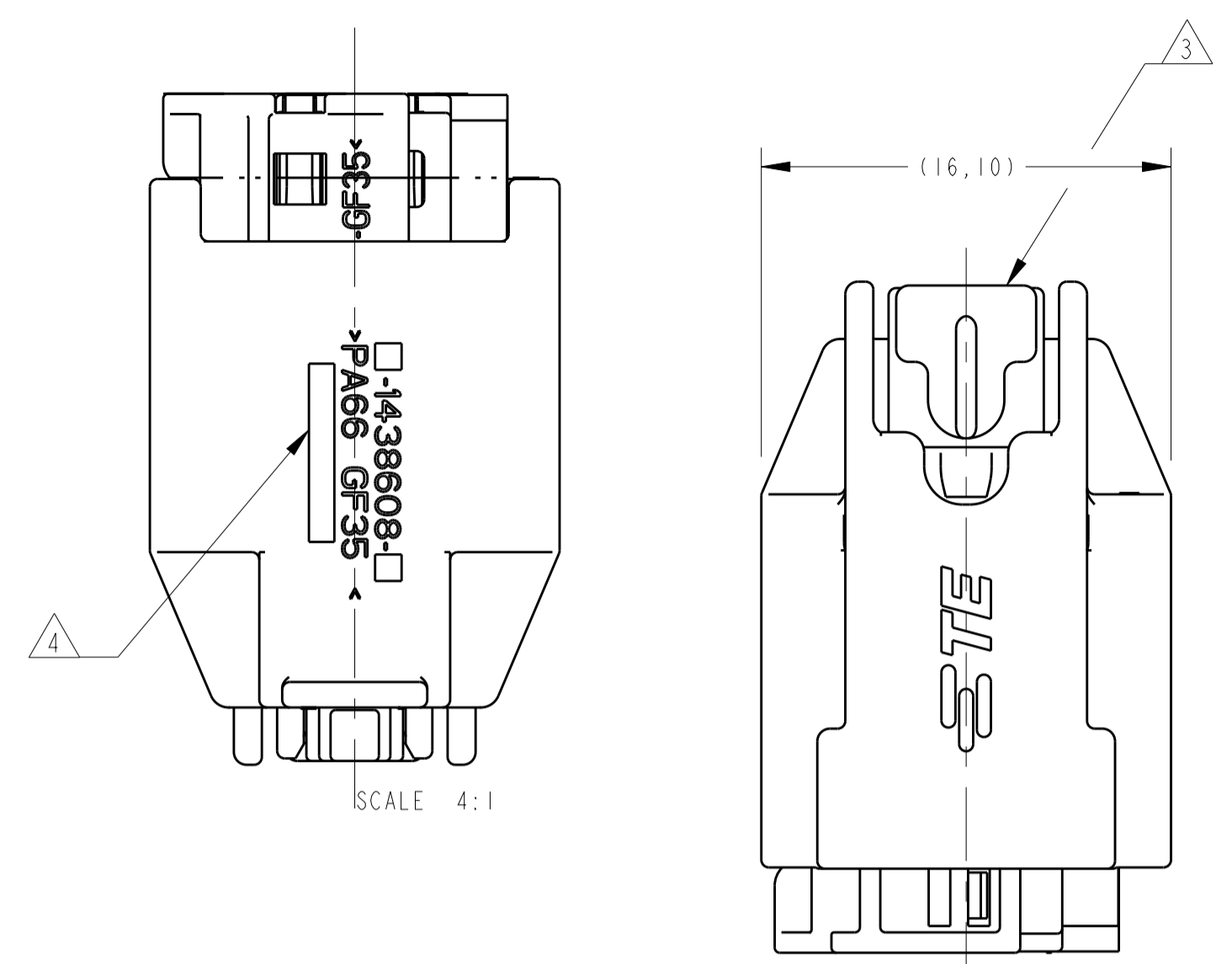


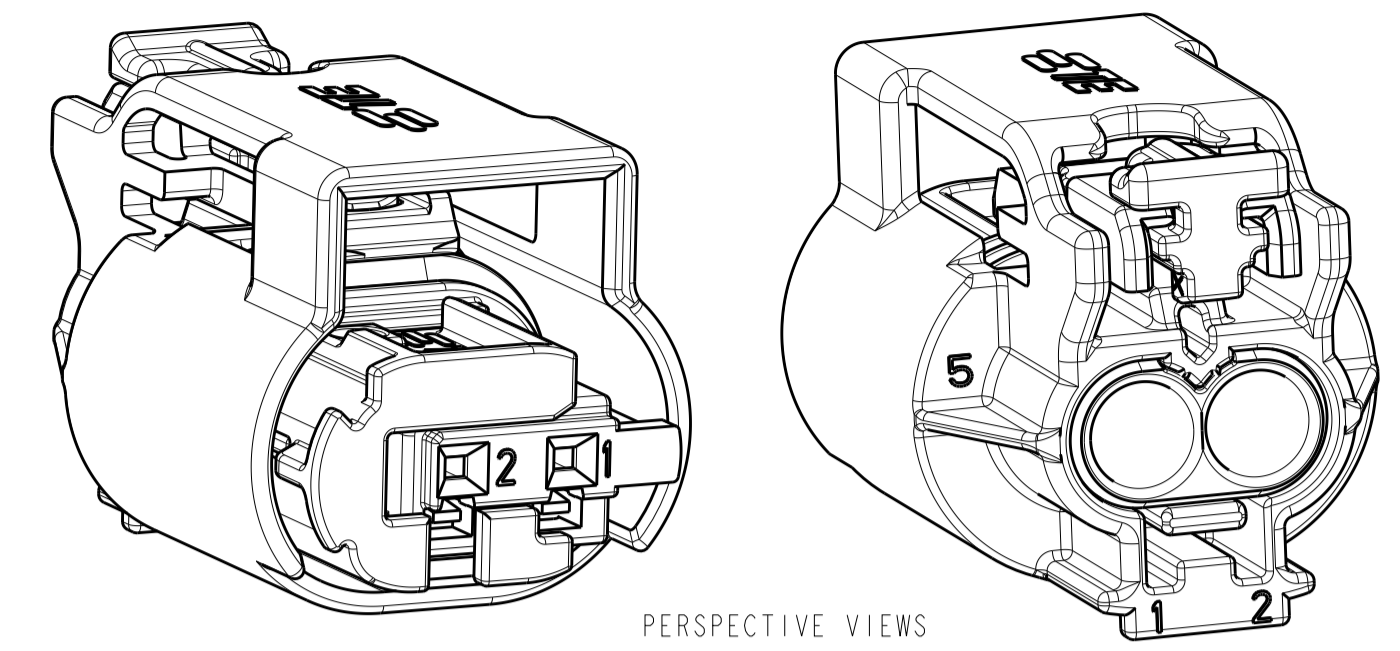
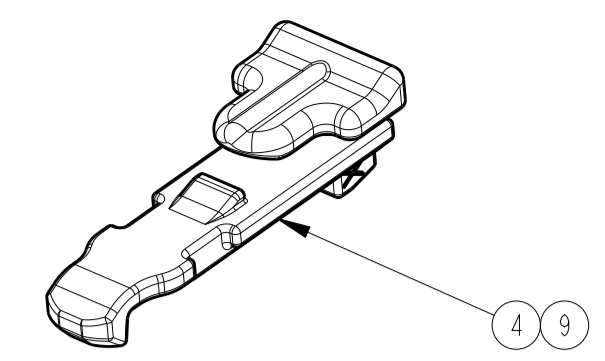
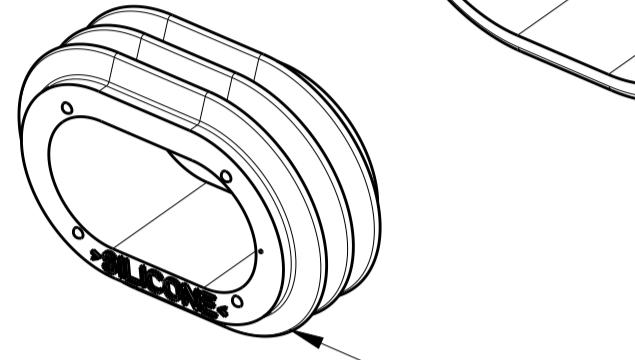
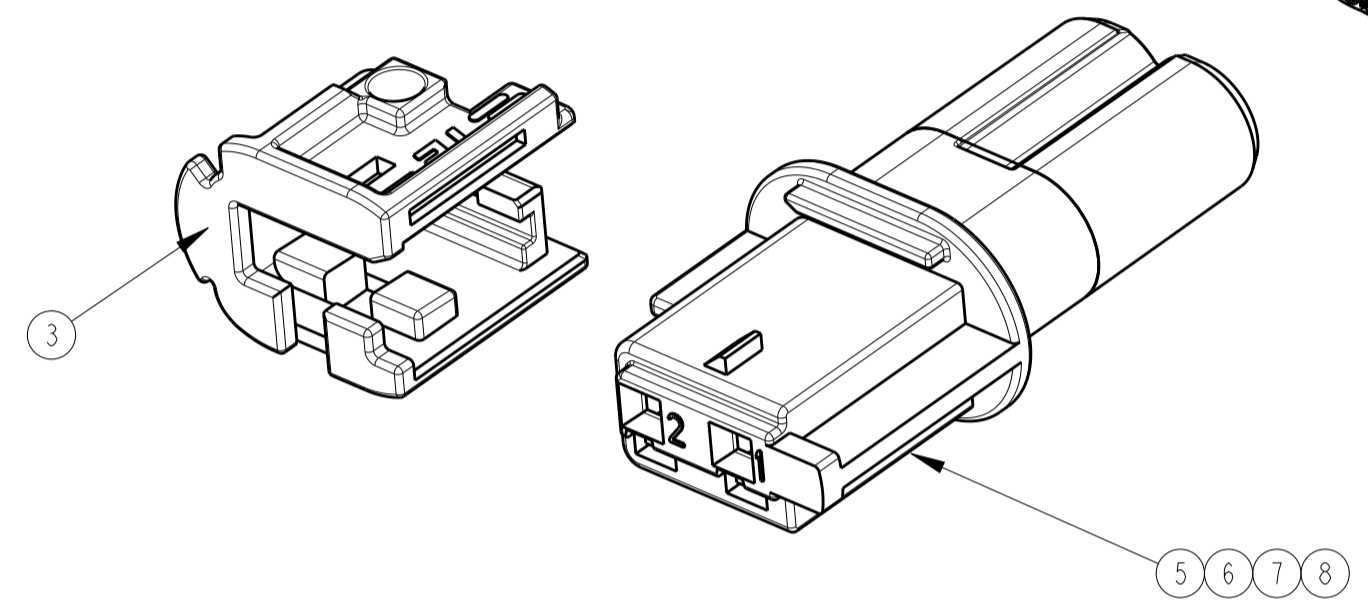
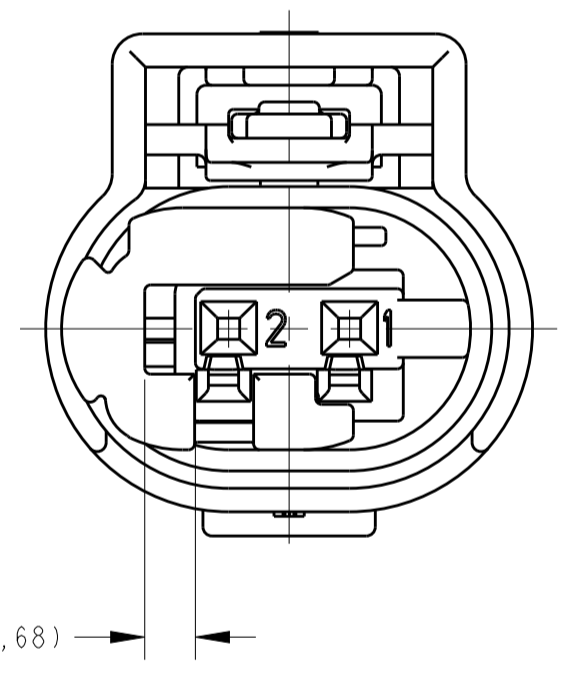
LOC		DIST		REVISIONS			
IN		00		REV	DATE	BY	APPV
G				REVISÉ DRAWING	ECO-14-011432	29JUL2014	NCL LWP
G1				REVISÉ BY	ECO-18-012392	18MAR2019	LAA DAO

**creo**  
 Creo Parametric 2.0  
**DO NOT REVISE**  
**EXCEPT BY CAD**



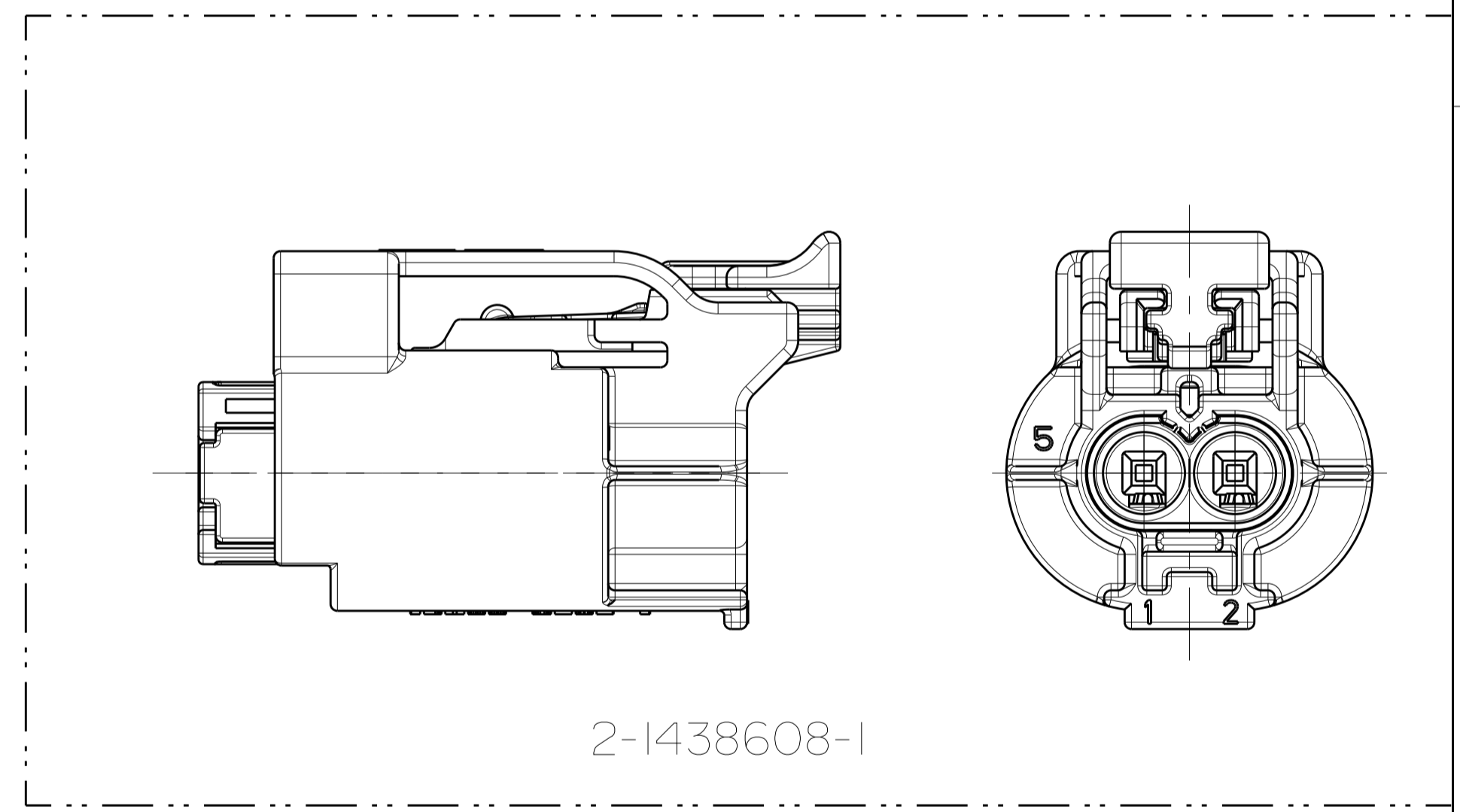
MARK OF TE-BR ASSY LINE NUMBER	
1	
2	

MARKING VIEW  
 SCALE 2:1



PERSPECTIVE VIEWS  
 SCALE 4:1

RECOMMENDED TERMINAL AND WIRE SEAL CHART			
RECOMMENDED TERMINAL P/N	PLATING	WIRE SIZE TYPE	RECOMMENDED WIRE SEAL (CORRESPONDING TO WIRE SIZE AND TYPE)
1703032-5	GOLD	20AWG TXL	967067-1
1703032-1	TIN	20AWG TXL	967067-1
1703032-5	GOLD	18AWG TXL	967067-1
1703032-1	TIN	18AWG TXL	967067-1
1703032-5	GOLD	20AWG GXL	967067-1
1703032-1	TIN	20AWG GXL	967067-1
1703032-5	GOLD	0.75mm <sup>2</sup> FRL	967067-1
1703032-1	TIN	0.75mm <sup>2</sup> FRL	967067-1
1703032-5	GOLD	0.50mm <sup>2</sup> FRL	967067-1
1703032-1	TIN	0.50mm <sup>2</sup> FRL	967067-1
2288140-1	TIN	0.35mm <sup>2</sup> FRL	967067-2
2288140-1	TIN	0.22mm <sup>2</sup> FRL	967067-2



1- 1438608-5 MOSTRADO.  
 1- 1438608-5 SHOWN.

- 2- TPA MOSTRADO EM POSIÇÃO DE PRÉ-TRAVA.
- 2- TPA SHOWN IN PRE-LATCHED POSITION.
- 3- CPA MOSTRADO EM POSIÇÃO DE PRÉ-TRAVA.
- 3- CPA SHOWN IN PRE-LATCHED POSITION.

4- GRAVACAO JULIANA DE DATA COM QUATRO DIGITOS (DDDD), PN ASSEMBLY, IDENTIFICACAO DO MATERIAL, E PARA TE-BR, IDENTIFICACAO DA LINHA DE MONTAGEM CONFORME TABELA ABAIXO, LOCALIZADA NESTA AREA.

4- MARK FOUR DIGIT JULIAN DATE CODE (DDDD), ASSEMBLY PART NUMBER, MATERIAL IDENTIFICATION, AND FOR TE-BR, THE ASSY LINE ID AS BELOW TABLE, LOCATED IN APPROXIMATE AREA SHOWN.

5- TERMINAIS, CABOS E SELOS VENDIDOS SEPARADAMENTE. (VER TABELA DE PN'S PARA TERMINAIS, CABOS, SELOS, ACABAMENTO E BITOLA RECOMENDADOS).

5- TERMINALS AND WIRE SEALS SOLD SEPARATELY. (SEE RECOMMENDED TERMINAL AND WIRE SEAL TABLE FOR P/N'S, PLATING, AND WIRE SIZE).

6- VER ESPECIFICACAO DE APLICACAO N. 114-18025.

6- SEE APPLICATION SPEC. NO. 114-18025.

7- VERSAO NEUTRA.

7- NEUTRAL VERSION.

8- ALIVIO DE MATERIAL (VER FOLHA 2 DE 2).

8- MATERIAL RECESS (SEE SHEET 2 OF 2).

9- COR OPCIONAL DO SELO - NATURAL.

9- OPTIONAL SEAL COLORS - NATURAL.

10- PRODUTO TESTADO CONFORME NORMA SAE/USCAR-2 REV.4 COM AS SEGUINTE EXCECOES:  
 11A. FORÇA DE INSERÇÃO DO TPA DA PRÉ MONTAGEM PARA TRAVADO = 12N. MIN.  
 11B. "CLICK" AUDIVEL = 1db MIN.  
 11C. FORÇA DE EXTRAÇÃO DO CPA DA POSIÇÃO TRAVADO PARA PRÉ TRAVADO = 7N MIN.

10- PRODUCT TESTED IN ACORDANCE WITH SAE/USCAR-2 REV.4 WITH THE FOLLOWING EXCEPTIONS:  
 11A. TPA PRESET TO LOCK FORCE = 12N. MIN.  
 11B. AUDIBLE "CLICK" = 1db MIN.  
 11C. CPA LOCK TO PRESET FORCE = 7N MIN.

11- SUPERFÍCIE DE VEDAÇÃO NESTA ÁREA, NÃO PERMITIDO MARCAS DE CHUPAGEM E DIVISÕES DO MOLDE. RUGOSIDADE DO MOLDE RA=0,8µm; ÂNGULO DE SAÍDA 15° (VER FOLHA 2 DE 2)

11- IN THIS AREA SEALING SURFACE AROUND, NO SINK MARKS AND TOOL PARTING PERMITTED. MOLD SURFACE RA=0,8µm; DRAFTING ANGLE 15° (SEE SHEET 2 OF 2)

12- PINOS DE CONTATO CONFORME DESENHO TE 114-18063 (VER FOLHA 2 DE 2)

12- CONTACT PINS ACCORDING TO INTERFACE DRAWING TE 114-18063 (SEE SHEET 2 OF 2)

SUPERSEDED			
REV	DATE	BY	APPV
1	1-8	1-7	1-6
2	1-4	1-3	1-2
3	1-1	1-1	1-1
4	1-1	1-1	1-1
5	1-1	1-1	1-1
6	1-1	1-1	1-1
7	1-1	1-1	1-1
8	1-1	1-1	1-1
9	1-1	1-1	1-1
10	1-1	1-1	1-1
11	1-1	1-1	1-1
12	1-1	1-1	1-1
13	1-1	1-1	1-1
14	1-1	1-1	1-1
15	1-1	1-1	1-1
16	1-1	1-1	1-1
17	1-1	1-1	1-1
18	1-1	1-1	1-1
19	1-1	1-1	1-1
20	1-1	1-1	1-1
21	1-1	1-1	1-1
22	1-1	1-1	1-1
23	1-1	1-1	1-1
24	1-1	1-1	1-1
25	1-1	1-1	1-1
26	1-1	1-1	1-1
27	1-1	1-1	1-1
28	1-1	1-1	1-1
29	1-1	1-1	1-1
30	1-1	1-1	1-1
31	1-1	1-1	1-1
32	1-1	1-1	1-1
33	1-1	1-1	1-1
34	1-1	1-1	1-1
35	1-1	1-1	1-1
36	1-1	1-1	1-1
37	1-1	1-1	1-1
38	1-1	1-1	1-1
39	1-1	1-1	1-1
40	1-1	1-1	1-1
41	1-1	1-1	1-1
42	1-1	1-1	1-1
43	1-1	1-1	1-1
44	1-1	1-1	1-1
45	1-1	1-1	1-1
46	1-1	1-1	1-1
47	1-1	1-1	1-1
48	1-1	1-1	1-1
49	1-1	1-1	1-1
50	1-1	1-1	1-1
51	1-1	1-1	1-1
52	1-1	1-1	1-1
53	1-1	1-1	1-1
54	1-1	1-1	1-1
55	1-1	1-1	1-1
56	1-1	1-1	1-1
57	1-1	1-1	1-1
58	1-1	1-1	1-1
59	1-1	1-1	1-1
60	1-1	1-1	1-1
61	1-1	1-1	1-1
62	1-1	1-1	1-1
63	1-1	1-1	1-1
64	1-1	1-1	1-1
65	1-1	1-1	1-1
66	1-1	1-1	1-1
67	1-1	1-1	1-1
68	1-1	1-1	1-1
69	1-1	1-1	1-1
70	1-1	1-1	1-1
71	1-1	1-1	1-1
72	1-1	1-1	1-1
73	1-1	1-1	1-1
74	1-1	1-1	1-1
75	1-1	1-1	1-1
76	1-1	1-1	1-1
77	1-1	1-1	1-1
78	1-1	1-1	1-1
79	1-1	1-1	1-1
80	1-1	1-1	1-1
81	1-1	1-1	1-1
82	1-1	1-1	1-1
83	1-1	1-1	1-1
84	1-1	1-1	1-1
85	1-1	1-1	1-1
86	1-1	1-1	1-1
87	1-1	1-1	1-1
88	1-1	1-1	1-1
89	1-1	1-1	1-1
90	1-1	1-1	1-1
91	1-1	1-1	1-1
92	1-1	1-1	1-1
93	1-1	1-1	1-1
94	1-1	1-1	1-1
95	1-1	1-1	1-1
96	1-1	1-1	1-1
97	1-1	1-1	1-1
98	1-1	1-1	1-1
99	1-1	1-1	1-1
100	1-1	1-1	1-1

THIS DRAWING IS A CONTROLLED DOCUMENT.

DIMENSIONS: mm

TOLERANCES UNLESS OTHERWISE SPECIFIED:

0 PLC ±0.5

1 PLC ±0.13

2 PLC ±0.13

3 PLC ±0.13

4 PLC ±0.13

ANGLES 40°/30°

MATERIAL SEE TABLE

FINISH SEE TABLE

OWN: R. FOLTZ 28APR2004

CHK: B. BUCHTER 28APR2004

APPV: B. BUCHTER 28APR2004

PRODUCT SPEC

APPLICATION SPEC

114-37012

WEIGHT

CUSTOMER DRAWING

NAME: PLUG ASSEMBLY, 2 POSITION, SEALED, MOS CLEAN BODY CONNECTOR

SIZE: A1

CAGE CODE: 00779

DRAWING NO: 1438608

RESTRICTED TO: G1

SCALE: 4:1

SHEET: 1 OF 2

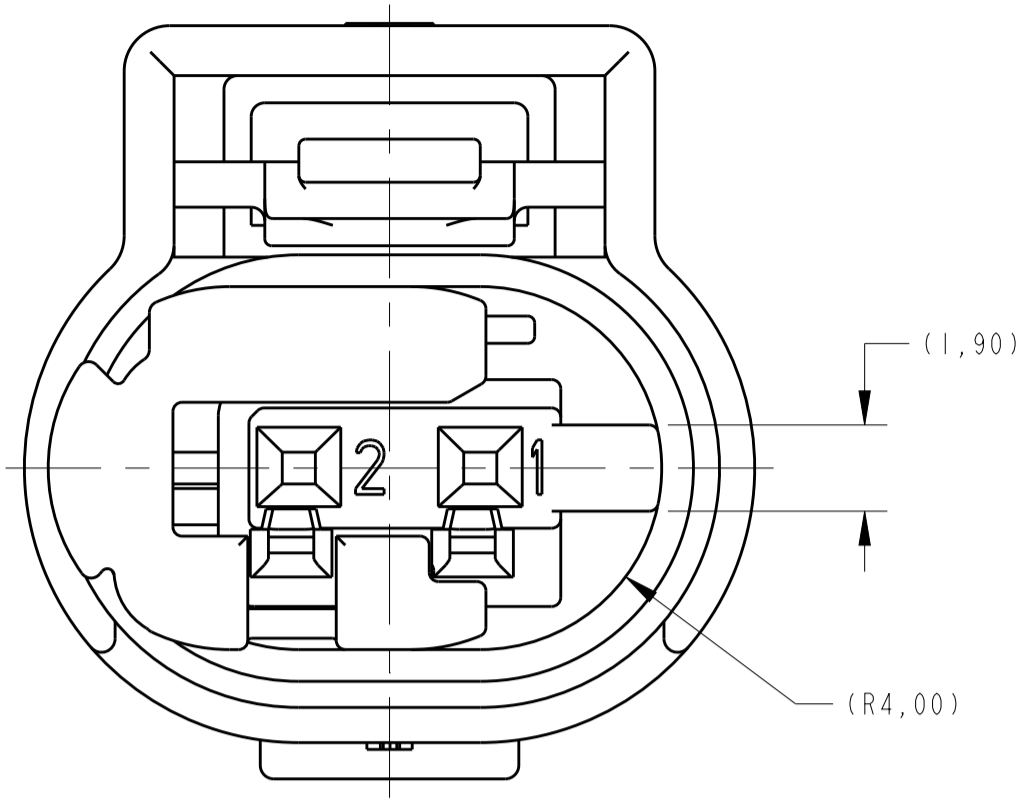
REV: 1

LOC	DIST	REV	DATE	BY	APPV
IN	00				

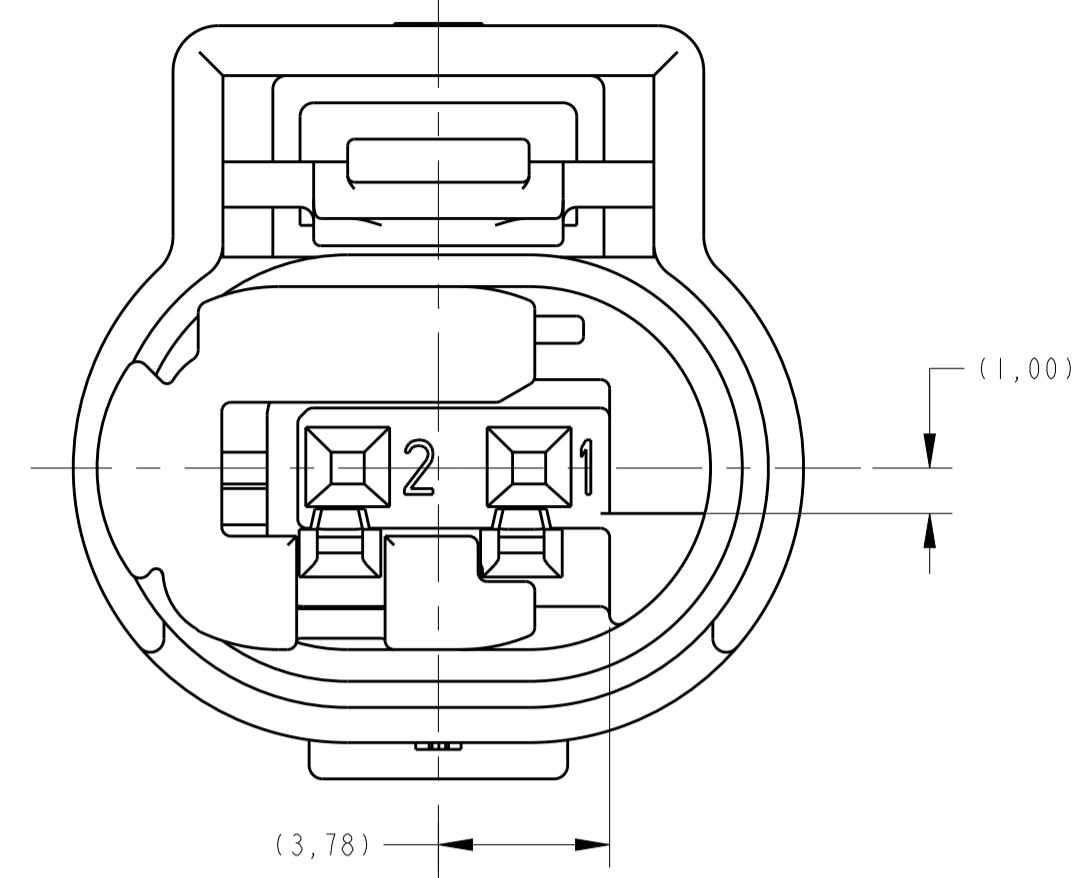
  

REVISIONS		DATE	BY	APPV
1	SEE SHEET 1			

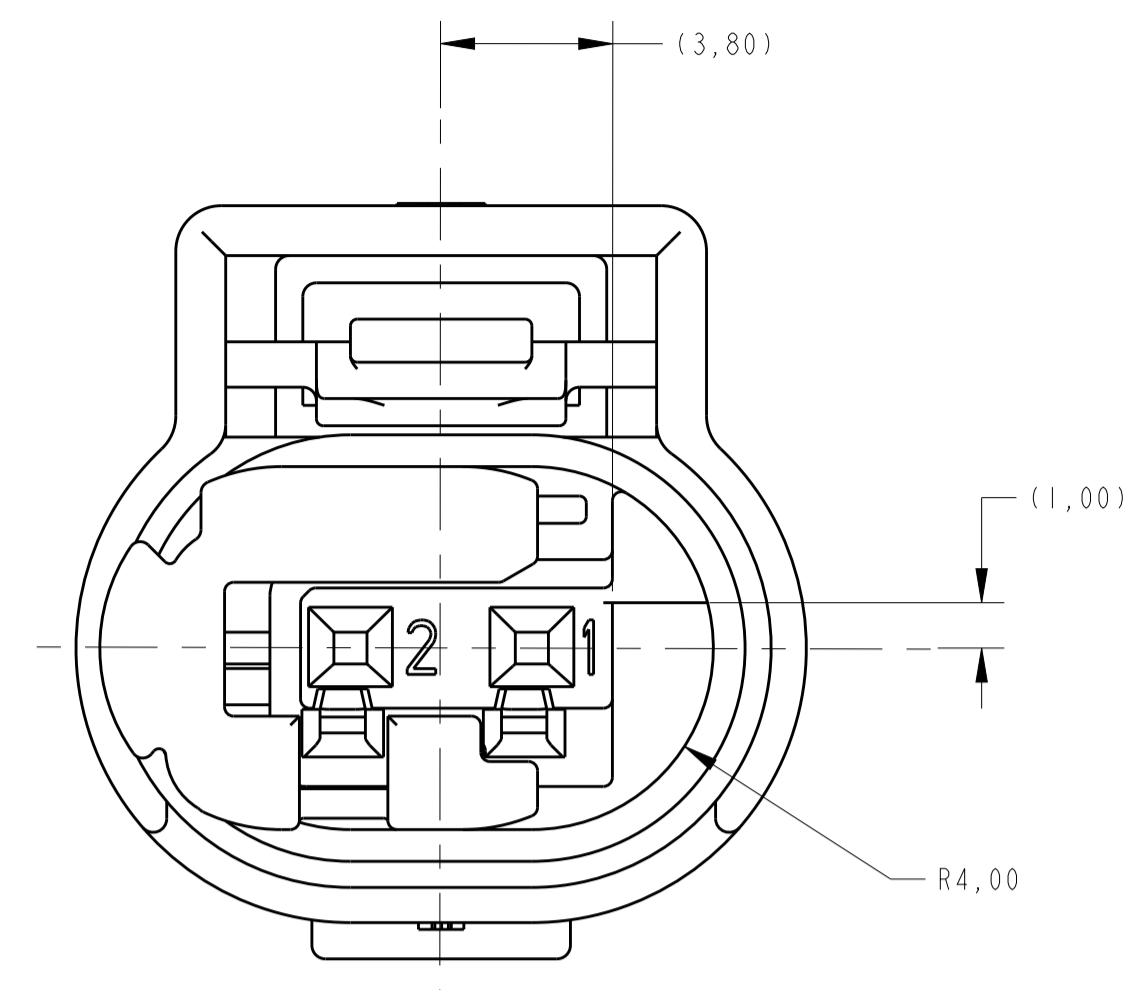
creo  
Creo Parametric 2.0  
DO NOT REVISE  
EXCEPT BY CAD



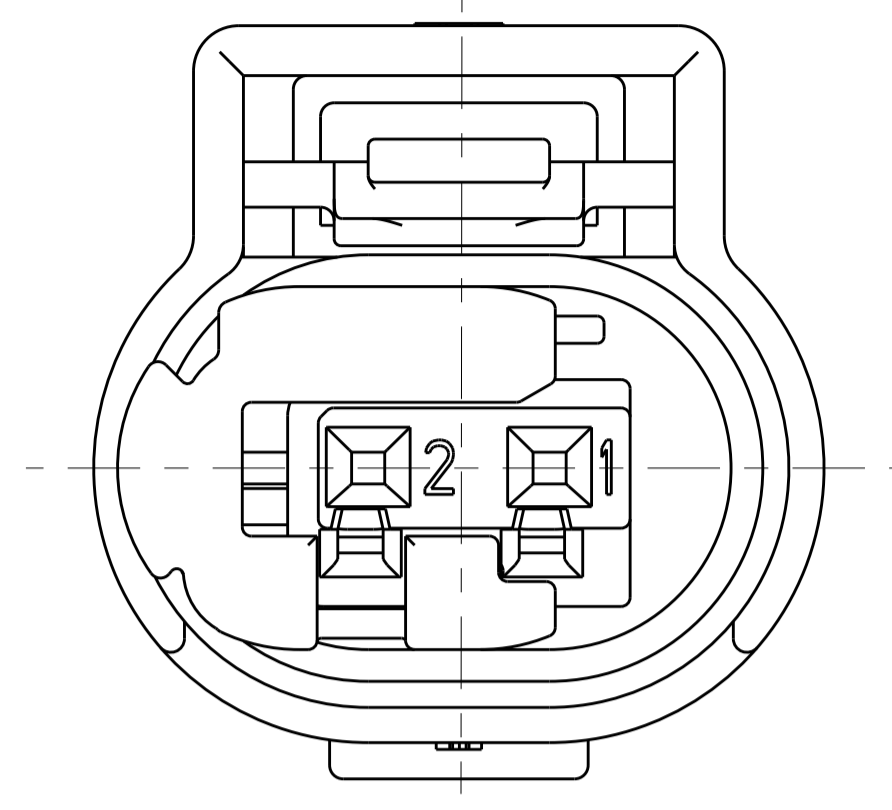
KEY CODE A  
1-1438608-1 AND 1-1438608-5 AND 2-1438608-1 ONLY  
SCALE 6:1



KEY CODE B  
1-1438608-2 AND 1-1438608-6 ONLY  
SCALE 6:1

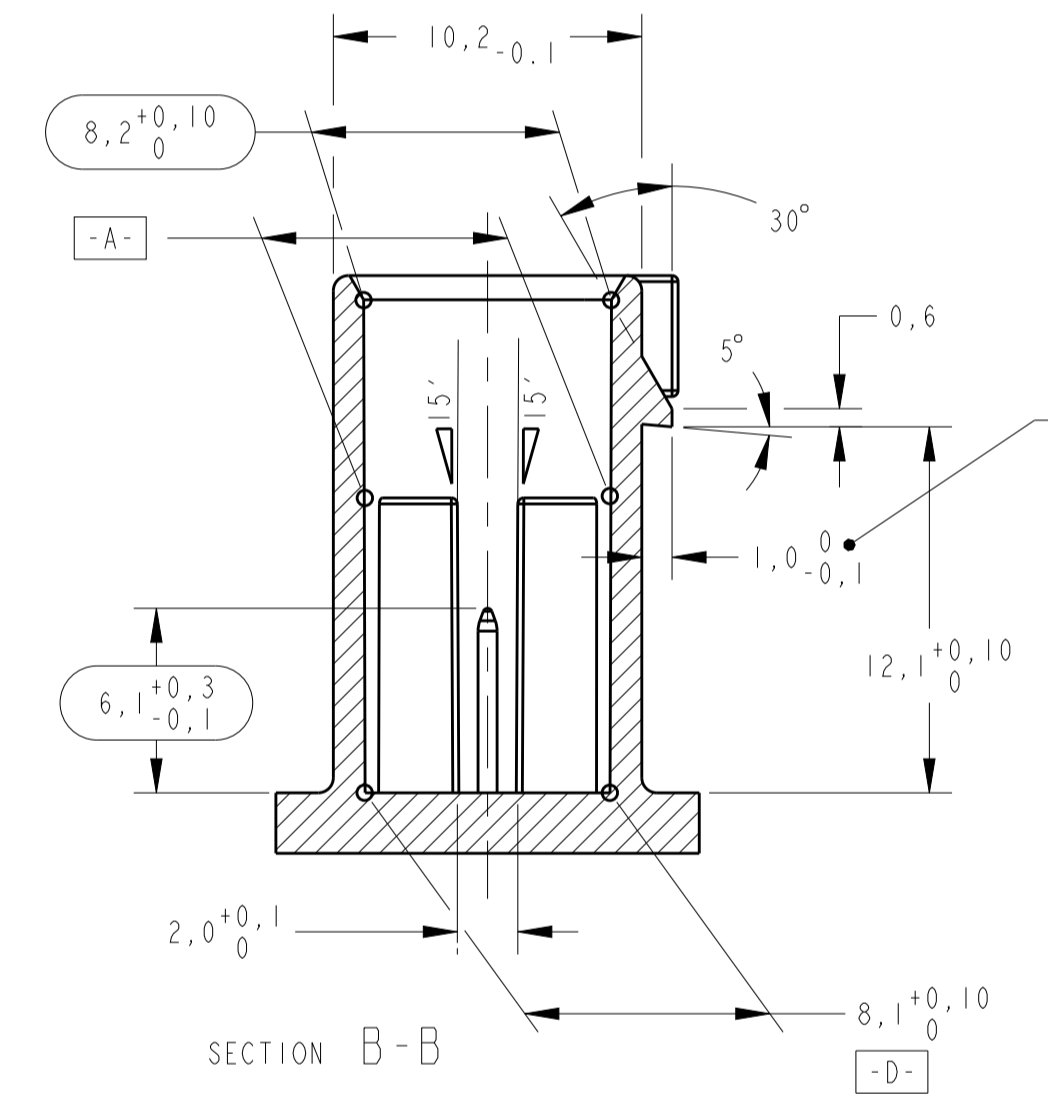
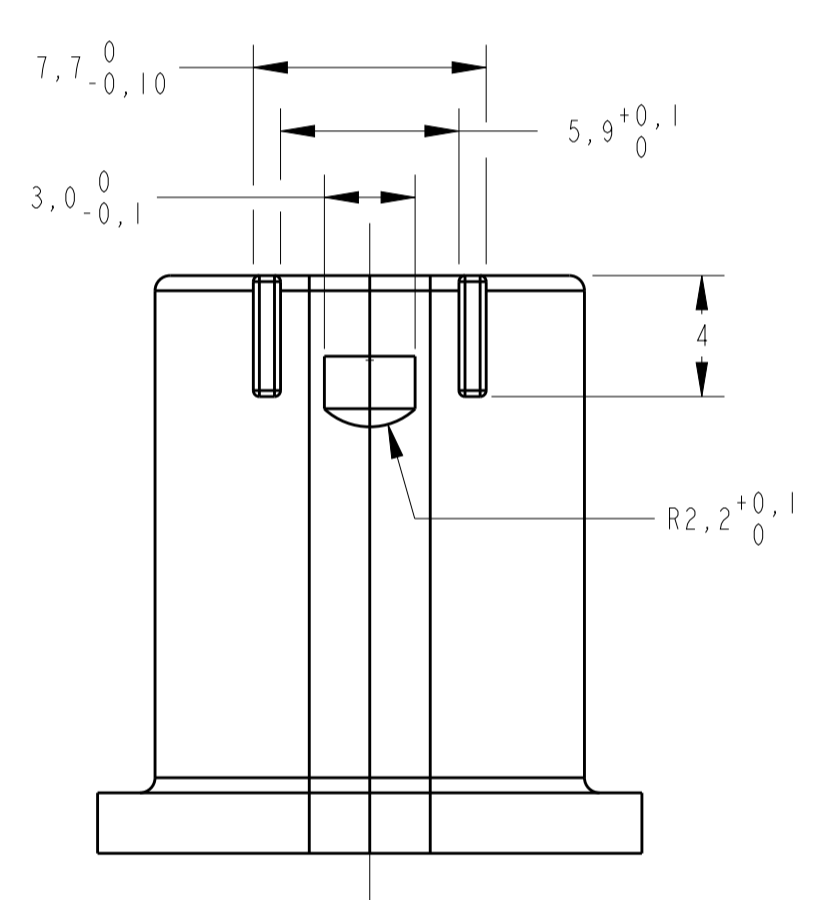


KEY CODE C  
1-1438608-3 AND 1-1438608-7 ONLY  
SCALE 6:1

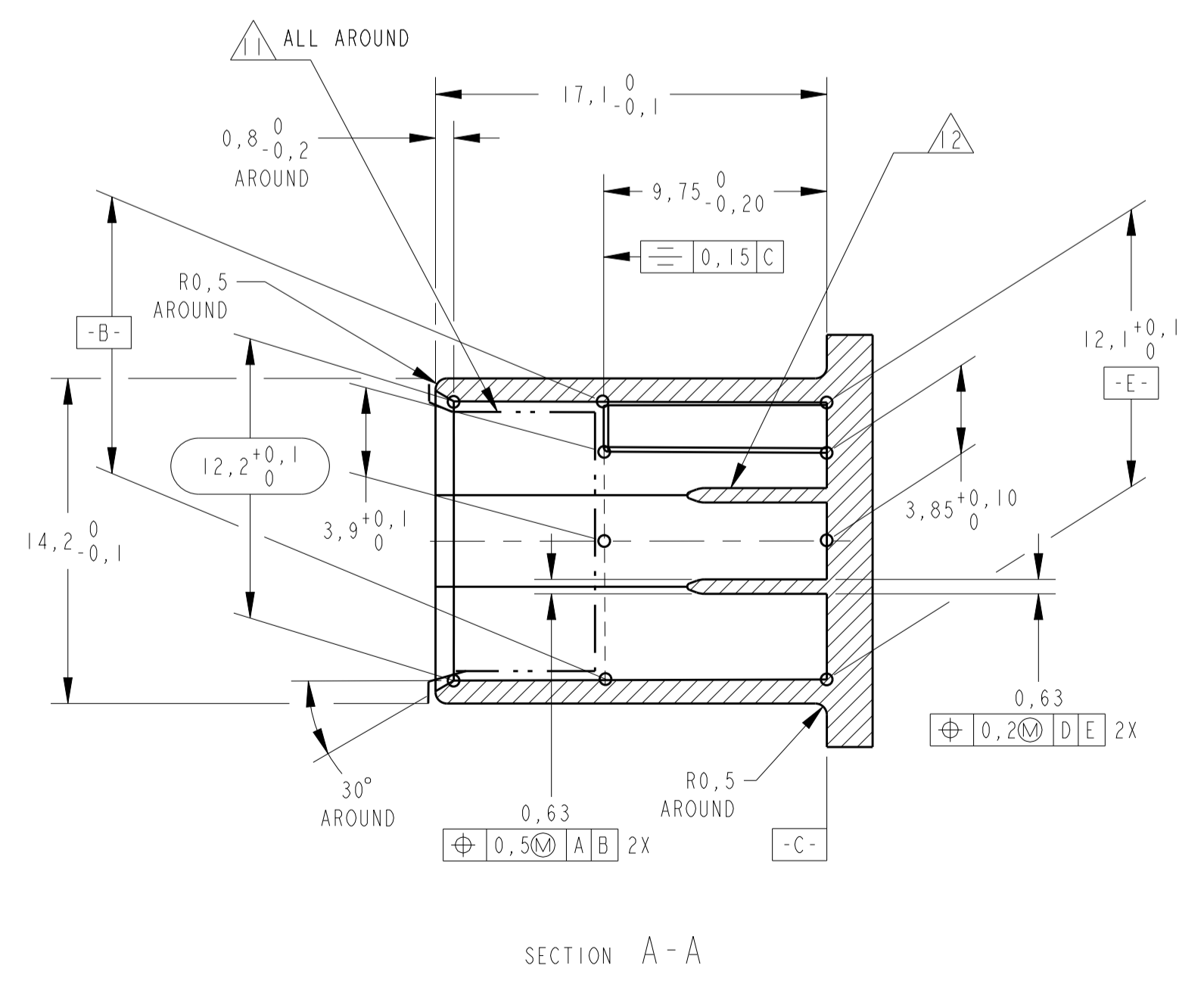
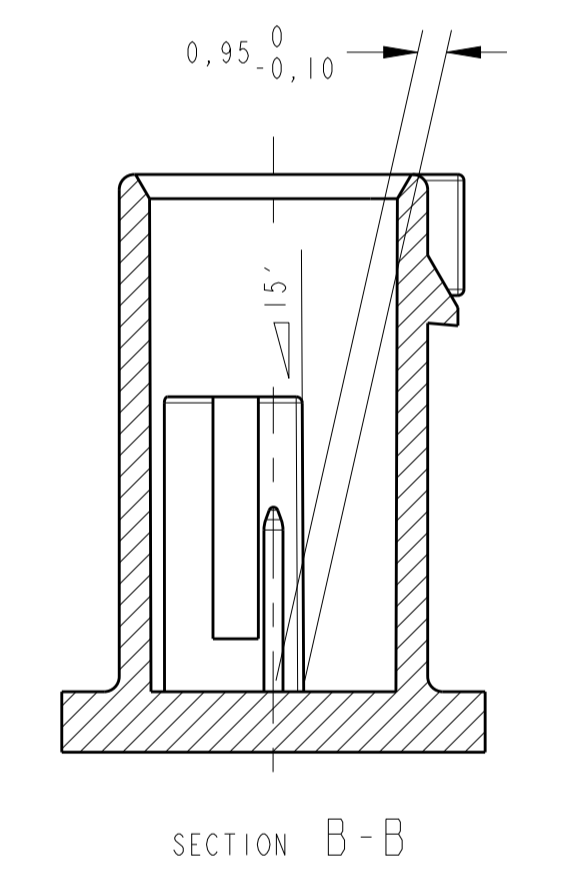
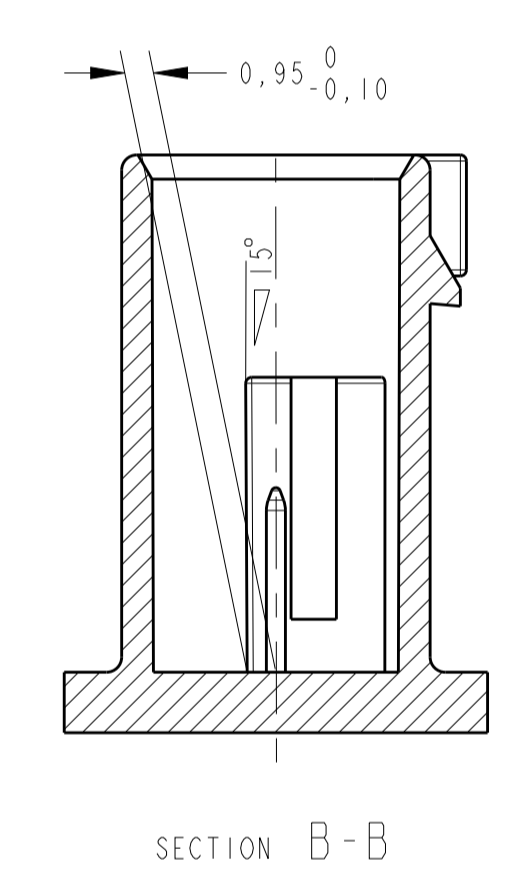
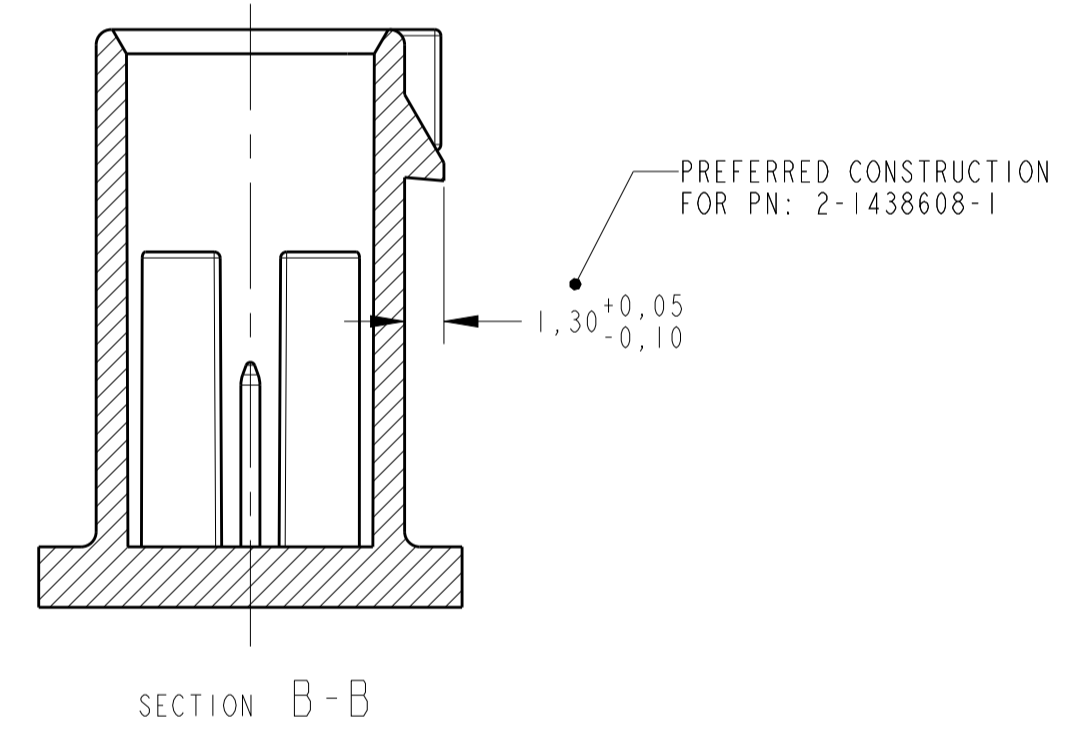


KEY CODE D 1:  $\Delta$   
1-1438708-4 AND 1-1438608-8 ONLY  
SCALE 6:1

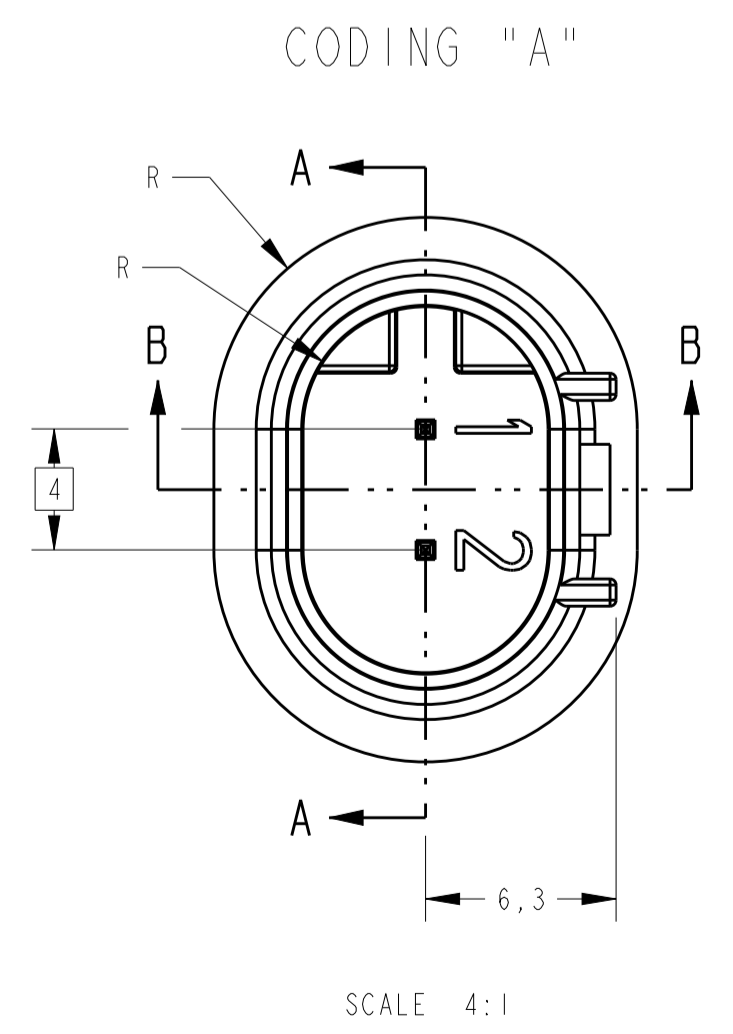
MATING CONNECTOR INFORMATION



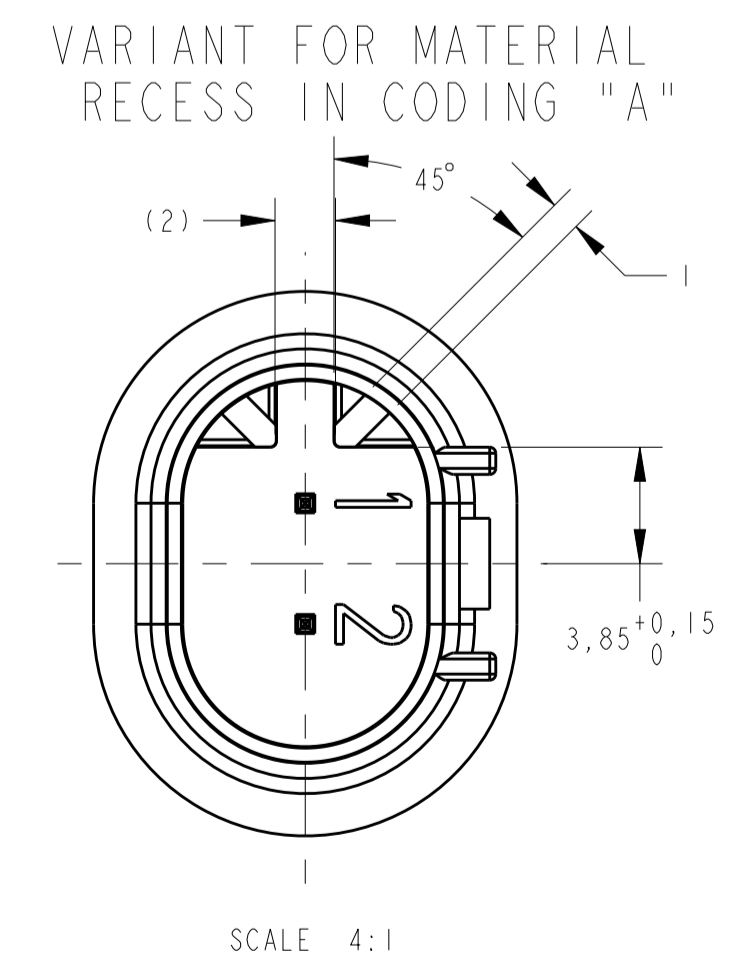
- CONSTRUCTION FOR PNs:
- 1-1438608-1
  - 1-1438608-2
  - 1-1438608-3
  - 1-1438608-4
  - 1-1438608-5
  - 1-1438608-6
  - 1-1438608-7
  - 1-1438608-8
  - 2-1438608-1



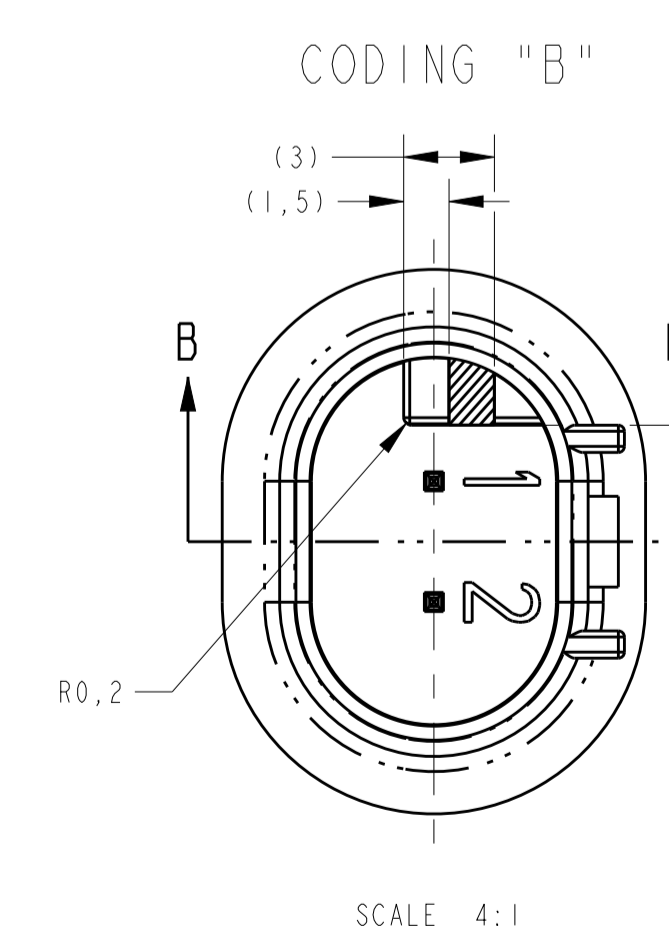
SECTION A-A



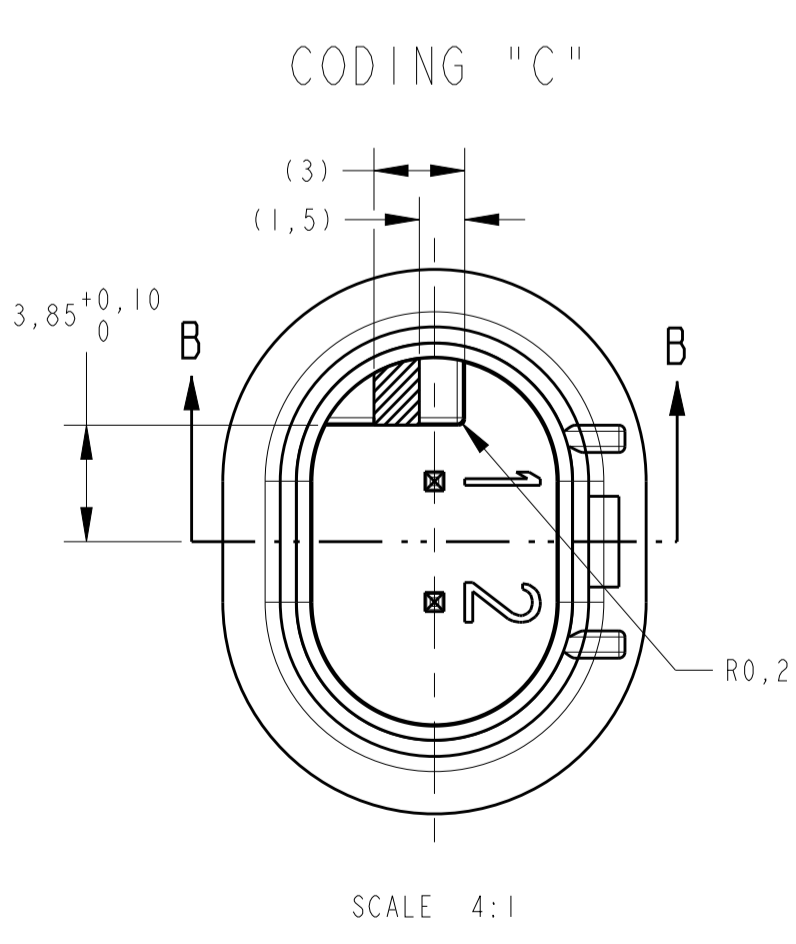
SCALE 4:1



SCALE 4:1



SCALE 4:1



SCALE 4:1

THIS DRAWING IS A CONTROLLED DOCUMENT.		OWN: R. FOLTZ 28APR2004	TE Connectivity
DIMENSIONS: mm		CHK: B. BUCHNER 28APR2004	
TOLERANCES UNLESS OTHERWISE SPECIFIED:		APPV: B. BUCHNER 28APR2004	NAME: PLUG ASSEMBLY, 2 POSITION, SEALED, MOS CLEAN BODY CONNECTOR
0 PLC	±	PRODUCT SPEC	SIZE: CAGE CODE DRAWING NO
1 PLC	±0,5	APPLICATION SPEC	RESTRICTED TO
2 PLC	±0,13	ANGLES	A1 00779 C=1438608
3 PLC	±	FINISH	SCALE 4:1 SHEET 2 OF 2 REV G1
4 PLC	±	SEE TABLE	
MATERIAL: SEE TABLE	FINISH: SEE TABLE	WEIGHT: -	
CUSTOMER DRAWING			

## X-ON Electronics

Largest Supplier of Electrical and Electronic Components

*Click to view similar products for [Automotive Connectors](#) category:*

*Click to view products by [TE Connectivity](#) manufacturer:*

Other Similar products are found below :

[003-018-000](#) [60403001](#) [60993906-B](#) [M902-2131](#) [M902-2161](#) [M902-2344](#) [72.330.1035.1](#) [73.353.4028.0](#) [F119300-B](#) [F166900](#) [F258300-B](#)  
[F358300-B](#) [F407400](#) [F444110](#) [F487000](#) [F509500B-B](#) [827153-1](#) [8N1515-32-24P](#) [9-1326729-8](#) [925474-1](#) [928905-1](#) [964562-4](#) [968782-1](#)  
[GT17SA-8DS-HU](#) [98891-1012](#) [98947-1016](#) [12004147](#) [12004475-L](#) [12010290](#) [12015454](#) [12020219-B](#) [12041318-B](#) [12052225-L](#) [12052466](#)  
[12064869](#) [12004327-B](#) [12015308](#) [12015384](#) [12015909](#) [1-21030-1](#) [12041254](#) [12041318](#) [12047946-B](#) [12047957](#) [12047957-L](#) [12059473](#)  
[12066261](#) [12110546](#) [12110546-B](#) [12131792](#)