

THIS DRAWING IS UNPUBLISHED.

RELEASED FOR PUBLICATION

ALL RIGHTS RESERVED.

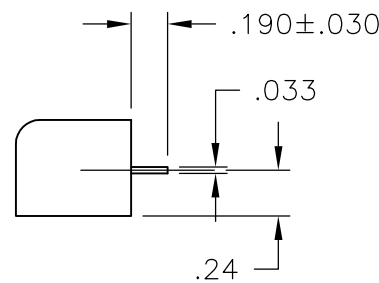
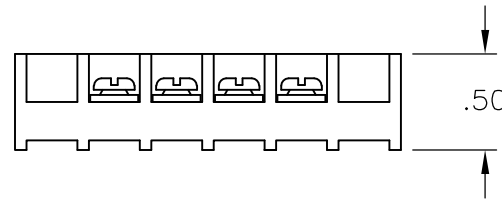
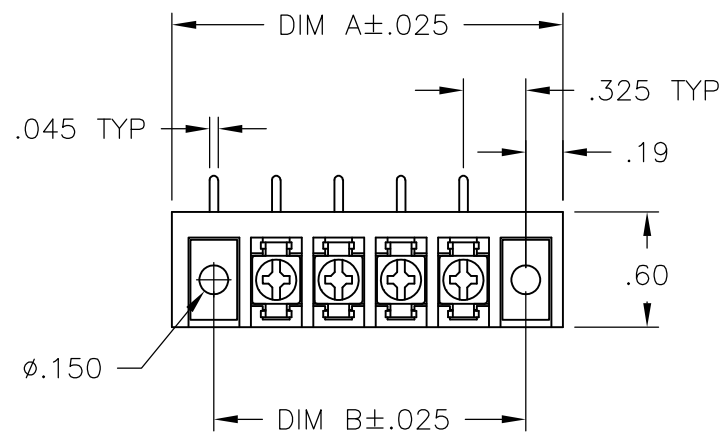
© COPYRIGHT - By -

LOC FT	DIST 0	REVISIONS				
P	LTR	DESCRIPTION	DATE	DWN	APVD	
	B1	REVISED PER ECO-11-005027	11MAR11	RK	HMR	

MATERIALS:
 HOUSING: POLYAMIDE, UL94V-0.
 TERMINALS: COPPER ALLOY, TIN PLATED.
 SCREWS: STEEL, ZINC PLATED.

ELECTRICAL:
 RATING: 20A 150V(300 LIMITED RATING)
 UL & CSA.

MECHANICAL:
 WIRE RANGE: 14-22 AWG
 MAXIMUM TIGHTENING TORQUE: 7 IN-LB
 RUNNING TORQUE: 0.5-3.5 IN-LB.



9.811	9.425	28	4PCR-28-008	2-1546940-6
9.486	9.100	27	4PCR-27-008	2-1546940-5
9.161	8.775	26	4PCR-26-008	2-1546940-4
8.836	8.450	25	4PCR-25-008	2-1546940-3
8.511	8.125	24	4PCR-24-008	2-1546940-2
8.186	7.800	23	4PCR-23-008	2-1546940-1
7.861	7.475	22	4PCR-22-008	2-1546940-0
7.536	7.150	21	4PCR-21-008	1-1546940-9
7.211	6.825	20	4PCR-20-008	1-1546940-8
6.886	6.500	19	4PCR-19-008	1-1546940-7
6.561	6.175	18	4PCR-18-008	1-1546940-6
6.236	5.850	17	4PCR-17-008	1-1546940-5
5.911	5.525	16	4PCR-16-008	1-1546940-4
5.586	5.200	15	4PCR-15-008	1-1546940-3
5.261	4.875	14	4PCR-14-008	1-1546940-2
4.936	4.550	13	4PCR-13-008	1-1546940-1
4.611	4.225	12	4PCR-12-008	1-1546940-0
4.286	3.900	11	4PCR-11-008	1546940-9
3.961	3.575	10	4PCR-10-008	1546940-8
3.636	3.250	9	4PCR-09-008	1546940-7
3.311	2.925	8	4PCR-08-008	1546940-6
2.986	2.600	7	4PCR-07-008	1546940-5
2.661	2.275	6	4PCR-06-008	1546940-4
2.336	1.950	5	4PCR-05-008	1546940-3
2.011	1.625	4	4PCR-04-008	2-1546158-1
1.686	1.300	3	4PCR-03-008	1546940-2
1.361	.975	2	4PCR-02-008	1546940-1
DIM "A"	DIM "B"	NO OF POS	CATALOG NUMBER	PART NUMBER

THIS DRAWING IS A CONTROLLED DOCUMENT.		DWN S. SCHLEGEL 10/20/06	STE TE Connectivity	
DIMENSIONS: INCHES		CHK S. YODER 10/20/06		
TOLERANCES UNLESS OTHERWISE SPECIFIED:		APVD S. YODER 10/20/06	NAME	
0 PLC ± -		PRODUCT SPEC	4PCR-XX-008 ASSEMBLY	
1 PLC ± -		APPLICATION SPEC	SIZE CAGE CODE DRAWING NO RESTRICTED TO	
2 PLC ± .01		WEIGHT	A3 00779 C-2-1546158-1	
3 PLC ± .005		CUSTOMER DRAWING	SCALE NTS	SHEET 1 OF 1
4 PLC ± -				REV B1
ANGLES ± 1°				
FINISH				
MATERIAL				

X-ON Electronics

Largest Supplier of Electrical and Electronic Components

Click to view similar products for [Barrier Terminal Blocks](#) category:

Click to view products by [TE Connectivity](#) manufacturer:

Other Similar products are found below :

[CTA-0103](#) [6PCR-02-008](#) [6PCR-05-008](#) [6PCR-08-008](#) [6PCR-21-006](#) [6PCV-06-008](#) [6PCV-10-009](#) [6PCV-15-008](#) [6STR-06-006](#) [6STR-08-006](#) [6STR-12-008](#) [6STR-14-008](#) [6STR-16-008](#) [6STR-17-008](#) [6STR-21-008](#) [6STR-25-008](#) [6STR-27-008](#) [6STV-03-006](#) [6STV-03-008](#) [6STV-04-006](#) [6STV-10-006](#) [6WWR-03](#) [6WWV-11-008](#) [6WWV-12-008](#) [6WWV-16-008](#) [7-1546701-0](#) [72212603](#) [72503-C](#) [73203](#) [76007](#) [7606-602LF](#) [77010-50](#) [796985-3](#) [796988-4](#) [7C1N08](#) [8-1437402-5](#) [8-1437402-7](#) [8-1546158-0](#) [870505](#) [870903](#) [8PCR-06-006](#) [8PCV-02-008](#) [8PCV-04-008](#) [8PCV-05-008](#) [8PCV-09-006](#) [8PCV-15-006](#) [8PCV-16-006](#) [8PCV-17-006](#) [8QCR-03-008](#) [8STV-04-006](#)