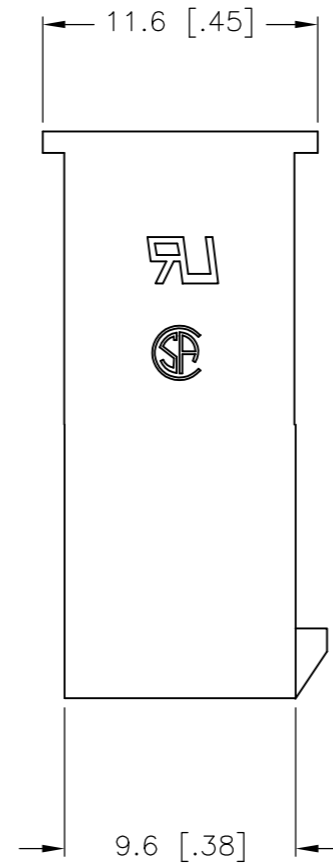
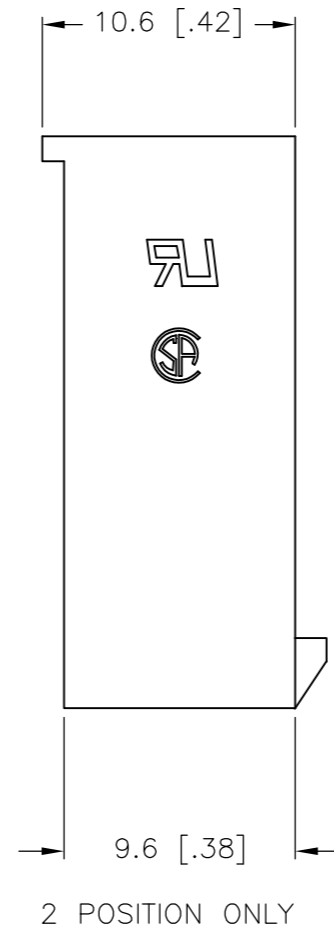
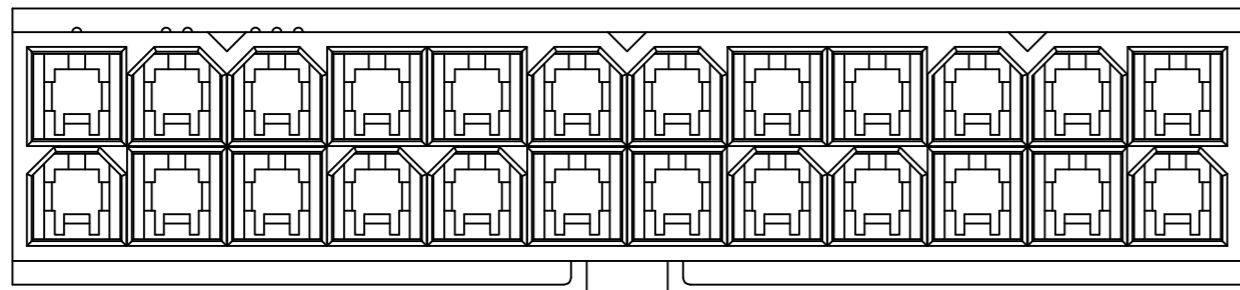
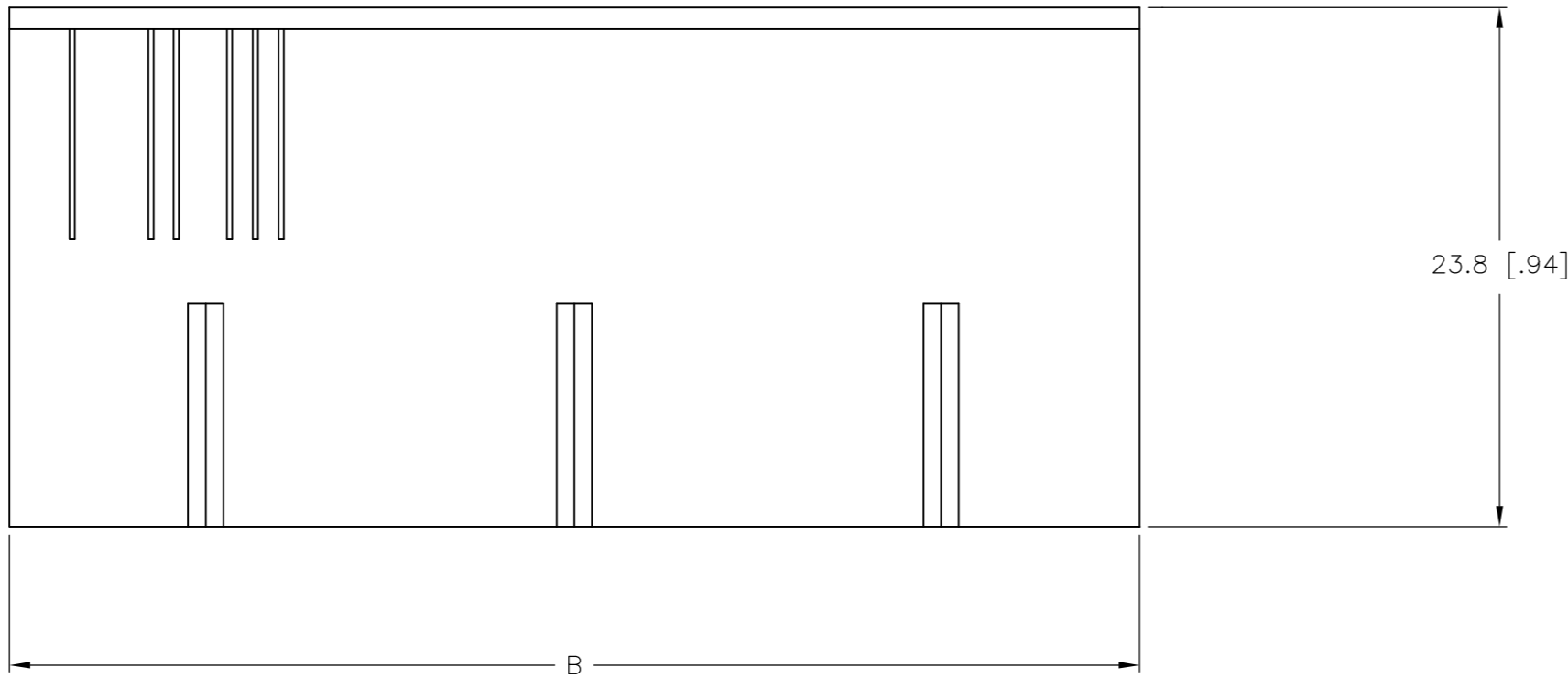
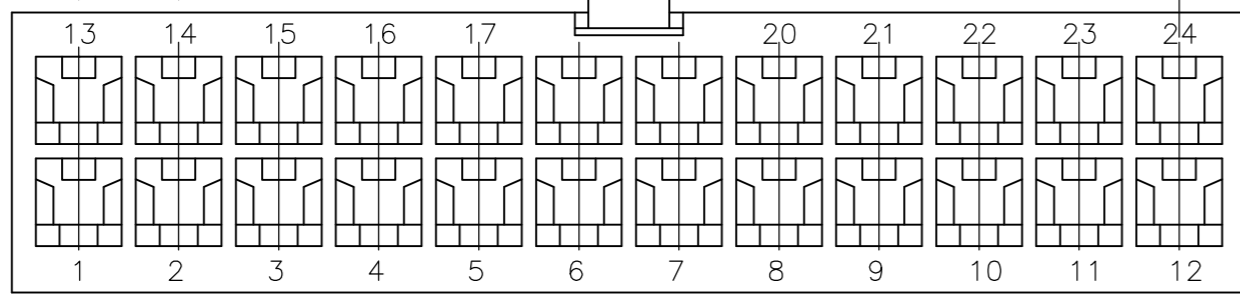
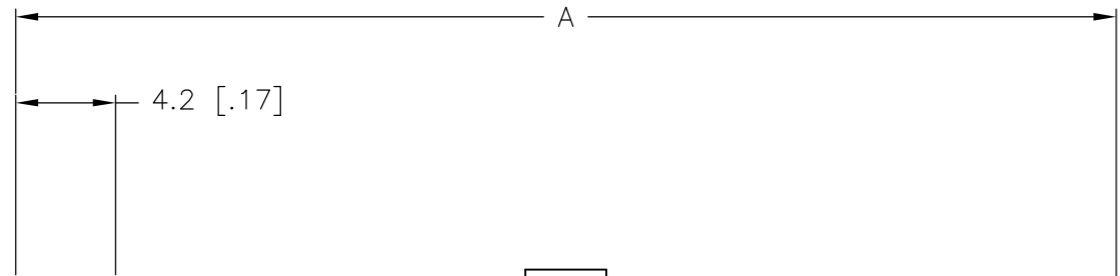
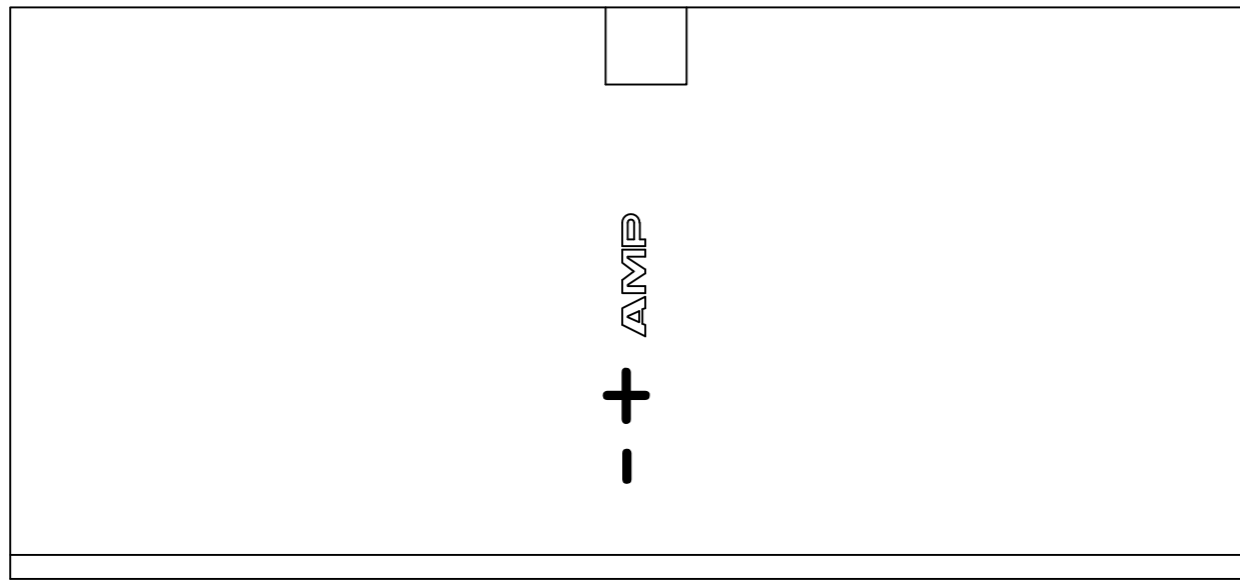


THIS DRAWING IS UNPUBLISHED. RELEASED FOR PUBLICATION  
 © COPYRIGHT - By - ALL RIGHTS RESERVED.

LOC		DIST		REVISIONS			
P	LTR	DESCRIPTION		DATE	DWN	APVD	
CM	00	C1	REVISED PER ECO-11-004587		11MAR11	RK	HMR



1 NYLON, UL94V-2, NATURAL.

51.6	46.2	24	2-1586000-4
47.4	42.0	22	2-1586000-2
43.2	37.8	20	2-1586000-0
39.0	33.6	18	1-1586000-8
34.8	29.4	16	1-1586000-6
30.6	25.2	14	1-1586000-4
26.4	21.0	12	1-1586000-2
22.2	16.8	10	1-1586000-0
18.0	12.6	8	1586000-8
13.8	8.4	6	1586000-6
9.6	4.2	4	1586000-4
5.4	--	2	1586000-2
DIM B	DIM A	POS	PART NUMBER

METRIC

THIS DRAWING IS A CONTROLLED DOCUMENT.

DIMENSIONS: mm [INCHES]	TOLERANCES UNLESS OTHERWISE SPECIFIED: 0 PLC ± 1 PLC ± 0.4 [.02] 2 PLC ± 0.25 [.010] 3 PLC ± 0.150 [.0059] 4 PLC ± ANGLES ± FINISH	DWN K. WHITAKER 25-FEB-2002 CHK D. COLEY 25-FEB-2002 APVD D. COLEY 25-FEB-2002 PRODUCT SPEC APPLICATION SPEC WEIGHT CUSTOMER DRAWING	NAME FREE HANGING PLUG HOUSING, VAL-U-LOK(TM) SIZE A2 CAGE CODE 00779 DRAWING NO C=1586000 RESTRICTED TO -
MATERIAL 1		SCALE 1:1	SHEET 1 of 1 REV C1

TE Connectivity

## X-ON Electronics

Largest Supplier of Electrical and Electronic Components

*Click to view similar products for [Headers & Wire Housings](#) category:*

*Click to view products by [TE Connectivity](#) manufacturer:*

Other Similar products are found below :

[892-18-020-10-001101](#) [58102-G61-06LF](#) [582553-1](#) [0009485154](#) [009176003701906](#) [0050291907](#) [LY20-4P-DT1-P1E-BR](#) [02.125.8002.8](#)  
[609-3404](#) [61062-3](#) [61082-181009](#) [622-3653LF](#) [63453-116](#) [636-1030](#) [636-1427](#) [636-3427](#) [636-4007](#) [641938-9](#) [641991-4](#) [644827-2](#) [65817-](#)  
[010LF](#) [65817-015LF](#) [65863-015LF](#) [66207-023LF](#) [67095-007LF](#) [67601157](#) [68645-018](#) [68648-049](#) [70.362.1628.0](#) [70-4210](#) [70-4226B](#) [70-](#)  
[4853B](#) [707-5020](#) [707-5028](#) [71.350.2428.0](#) [71918-208LF](#) [71961-016LF](#) [733-134](#) [733-162](#) [754199-000](#) [760-3052](#) [787-8014-00](#) [79531-3000](#)  
[FCN-360C032-B](#) [FCN-367T-T012/H](#) [FCN-723D010/2](#) [80.063.4001.1](#) [800-90-001-10-001000](#) [800-90-010-10-002000](#) [801-43-002-10-013000](#)