

4

3

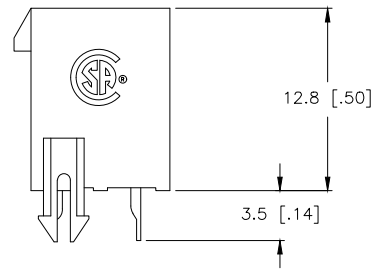
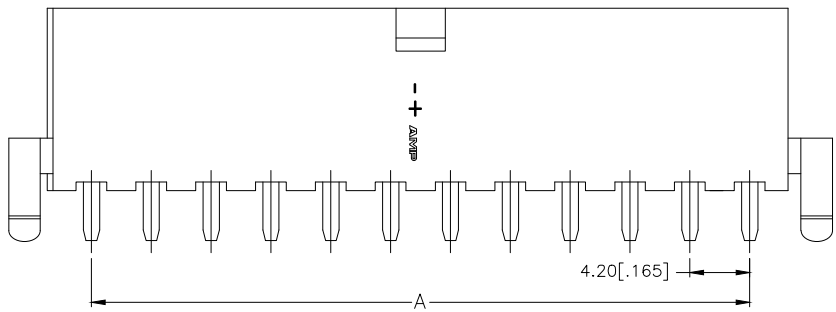
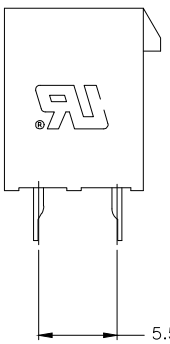
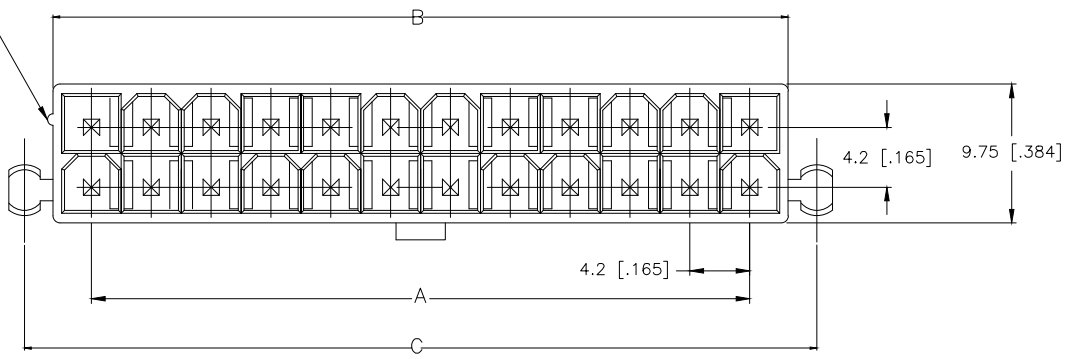
2

1

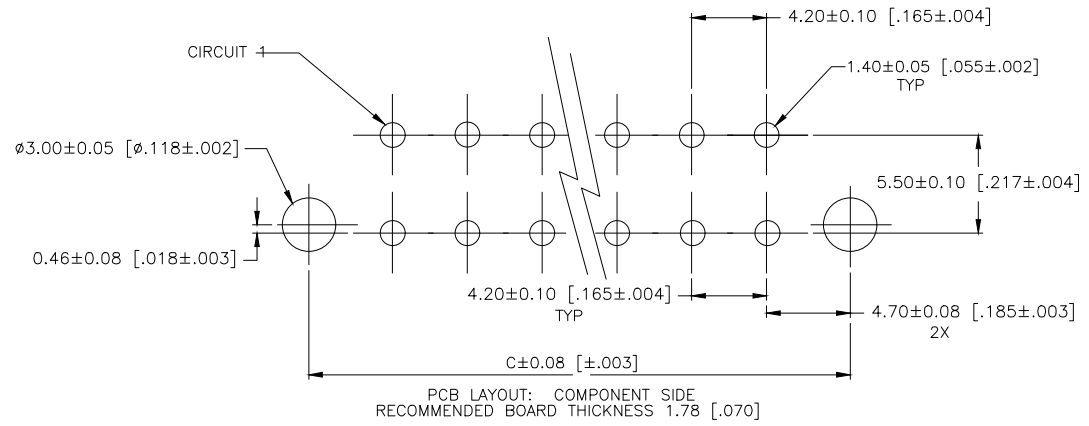
THIS DRAWING IS UNPUBLISHED. RELEASED FOR PUBLICATION  
 © COPYRIGHT - By - ALL RIGHTS RESERVED.

LOC		DIST		REVISIONS				
P	LTR	DESCRIPTION	DATE	DWN	APVD			
B8		REVISED PER ECO-19-018165	29NOV2019	WH	DZ			

POSITION 1  
IDENTIFICATION  
FEATURE



- 1 MATERIAL: HOUSING-NYLON, UL94V-0 (COLOR-NATURAL, COLOR OF PARTS MAY VARY) CONTACTS-0.25 [0.010] THICK BRASS ALLOY.
- 2 CONTACT FINISH: 0.002032 [0.000080] MIN BRIGHT TIN OVER 0.000381 [0.000015] MIN NICKEL OVER ENTIRE CONTACT.
- 3 MATES WITH VAL-U-LOK(TM) RECEPTACLE HOUSINGS.
- 4 CONTACT FINISH: 0.000076 [0.000030] MIN GOLD PLATE ON PIN MATING SURFACE, 0.003 [0.00012] MIN TIN PLATE ON OTHER SURFACE, ALL OVER 0.00127 [0.00005] MIN NICKEL BASE PLATE.



PCB LAYOUT: COMPONENT SIDE  
 RECOMMENDED BOARD THICKNESS 1.78 [0.070]

2-1586040-4 SHOWN

THIS DRAWING IS A CONTROLLED DOCUMENT.		DWN S. HOOVER 25-SEP-2002	<b>STE</b> TE Connectivity
		CHK D. COLEY 25-SEP-2002	
DIMENSIONS: mm [INCHES]		APVD D. COLEY 25-SEP-2002	NAME
TOLERANCES UNLESS OTHERWISE SPECIFIED:		PRODUCT SPEC	VERTICAL HEADER WITH PEGS, WITH DRAIN HOLES VAL-U-LOK(TM)
0 PLC ±	1 PLC ± 0.5 [0.02]	108-2112	SIZE
2 PLC ± 0.25 [0.010]	3 PLC ±	APPLICATION SPEC	CAGE CODE
4 PLC ±	ANGLES ±	114-13172	DRAWING NO
MATERIAL	FINISH	WEIGHT	RESTRICTED TO
1	SEE TABLE	A2 00779	©=1586040
		CUSTOMER DRAWING	SCALE N/A SHEET 1 of 2 REV B8


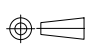
1586040

THIS DRAWING IS UNPUBLISHED. RELEASED FOR PUBLICATION  
 © COPYRIGHT - By - ALL RIGHTS RESERVED.

LOC		DIST		REVISIONS				
P	LTR	DESCRIPTION	DATE	DWN	APVD			
-	-	SEE SHEET 1	-	-	-			

$\triangle 4$	24	46.2±0.25 [1.82±.01]	51.6 [2.03]	55.6 [2.19]	5-1586040-4
$\triangle 4$	22	42.0±0.25 [1.65±.01]	47.4 [1.87]	51.4 [2.02]	5-1586040-2
$\triangle 4$	20	37.8±0.25 [1.49±.01]	43.2 [1.70]	47.2 [1.86]	5-1586040-0
$\triangle 4$	18	33.6±0.25 [1.32±.01]	39.0 [1.54]	43.0 [1.69]	4-1586040-8
$\triangle 4$	16	29.4±0.25 [1.16±.01]	34.8 [1.37]	38.8 [1.53]	4-1586040-6
$\triangle 4$	14	25.2±0.25 [.99±.01]	30.6 [1.21]	34.6 [1.36]	4-1586040-4
$\triangle 4$	12	21.0±0.25 [.83±.01]	26.4 [1.04]	30.4 [1.20]	4-1586040-2
$\triangle 4$	10	16.8±0.13 [.66±.005]	22.2 [.87]	26.2 [1.03]	4-1586040-0
$\triangle 4$	8	12.6±0.13 [.50±.005]	18.0 [.71]	22.0 [1.03]	3-1586040-8
$\triangle 4$	6	8.4±0.13 [.33±.005]	13.8 [.54]	17.8 [.70]	3-1586040-6
$\triangle 4$	2		5.4 [.21]	9.4 [.37]	3-1586040-2
$\triangle 4$	4	4.2±0.13 [.17±.005]	9.6 [.38]	13.6 [.54]	3-1586040-4
$\triangle 2$	24	46.2±0.25 [1.82±.01]	51.6 [2.03]	55.6 [2.19]	2-1586040-4
$\triangle 2$	22	42.0±0.25 [1.65±.01]	47.4 [1.87]	51.4 [2.02]	2-1586040-2
$\triangle 2$	20	37.8±0.25 [1.49±.01]	43.2 [1.70]	47.2 [1.86]	2-1586040-0
$\triangle 2$	18	33.6±0.25 [1.32±.01]	39.0 [1.54]	43.0 [1.69]	1-1586040-8
$\triangle 2$	16	29.4±0.25 [1.16±.01]	34.8 [1.37]	38.8 [1.53]	1-1586040-6
$\triangle 2$	14	25.2±0.25 [.99±.01]	30.6 [1.21]	34.6 [1.36]	1-1586040-4
$\triangle 2$	12	21.0±0.25 [.83±.01]	26.4 [1.04]	30.4 [1.20]	1-1586040-2
$\triangle 2$	10	16.8±0.13 [.66±.005]	22.2 [.87]	26.2 [1.03]	1-1586040-0
$\triangle 2$	8	12.6±0.13 [.50±.005]	18.0 [.71]	22.0 [.87]	1586040-8
$\triangle 2$	6	8.4±0.13 [.33±.005]	13.8 [.54]	17.8 [.70]	1586040-6
$\triangle 2$	4	4.2±0.13 [.17±.005]	9.6 [.38]	13.6 [.54]	1586040-4
$\triangle 2$	2		5.4 [.21]	9.4 [.37]	1586040-2
FINISH	POS	A	B±0.25[.01]	C±0.38[.015]	PART NUMBER

THIS DRAWING IS A CONTROLLED DOCUMENT.

DIMENSIONS: mm [INCHES]	TOLERANCES UNLESS OTHERWISE SPECIFIED:	DWN S. HOOVER 25-SEP-2002	 TE Connectivity	
	0 PLC ± 1 PLC ± 0.5 [.02] 2 PLC ± 0.25 [.010] 3 PLC ± 4 PLC ± ANGLES ±	CHK D. COLEY 25-SEP-2002	PRODUCT SPEC 108-2112	
	MATERIAL $\triangle 1$	FINISH SEE TABLE	APVD D. COLEY 25-SEP-2002	NAME VERTICAL HEADER WITH PEGS, WITH DRAIN HOLES VAL-U-LOK(TM)
		SIZE A2	CAGE CODE 00779	DRAWING NO ©=1586040
		WEIGHT -	RESTRICTED TO -	SCALE N/A
		CUSTOMER DRAWING	SHEET 2 of 2	REV B8

## X-ON Electronics

Largest Supplier of Electrical and Electronic Components

*Click to view similar products for [Headers & Wire Housings](#) category:*

*Click to view products by [TE Connectivity](#) manufacturer:*

Other Similar products are found below :

[892-18-020-10-001101](#) [58102-G61-06LF](#) [582553-1](#) [0009485154](#) [009176003701906](#) [0050291907](#) [LY20-4P-DT1-P1E-BR](#) [02.125.8002.8](#)  
[609-3404](#) [61062-3](#) [61082-181009](#) [622-3653LF](#) [63453-116](#) [636-1030](#) [636-1427](#) [636-3427](#) [636-4007](#) [641938-9](#) [641991-4](#) [644827-2](#) [65817-010LF](#) [65817-015LF](#) [65863-015LF](#) [66207-023LF](#) [67095-007LF](#) [67601157](#) [68645-018](#) [68648-049](#) [70.362.1628.0](#) [70-4210](#) [70-4226B](#) [70-4853B](#) [707-5020](#) [707-5028](#) [71.350.2428.0](#) [71918-208LF](#) [71961-016LF](#) [733-134](#) [733-162](#) [754199-000](#) [760-3052](#) [787-8014-00](#) [79531-3000](#)  
[FCN-360C032-B](#) [FCN-367T-T012/H](#) [FCN-723D010/2](#) [80.063.4001.1](#) [800-90-001-10-001000](#) [800-90-010-10-002000](#) [801-43-002-10-013000](#)