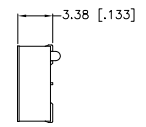
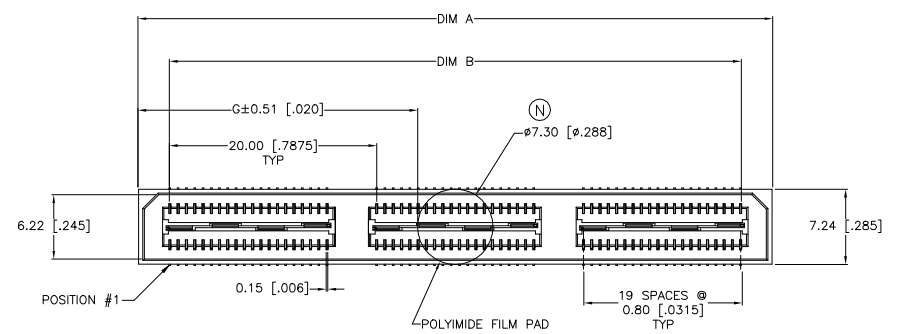
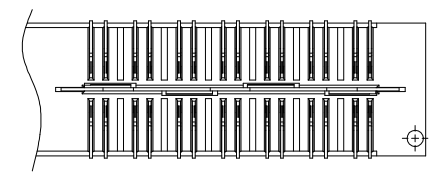
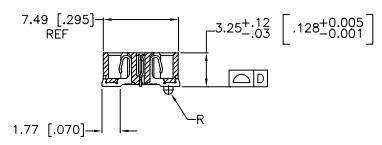
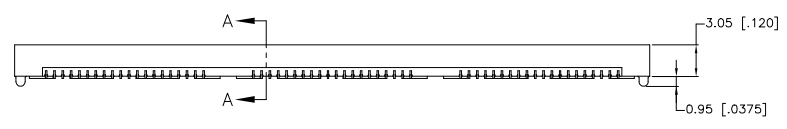


| REVISIONS |           |                           |    |       |
|-----------|-----------|---------------------------|----|-------|
| #         | DATE      | DESCRIPTION               | BY | APP'D |
| N         | 29APR2019 | REVISED PER ECR-19-008349 | AL | HL    |

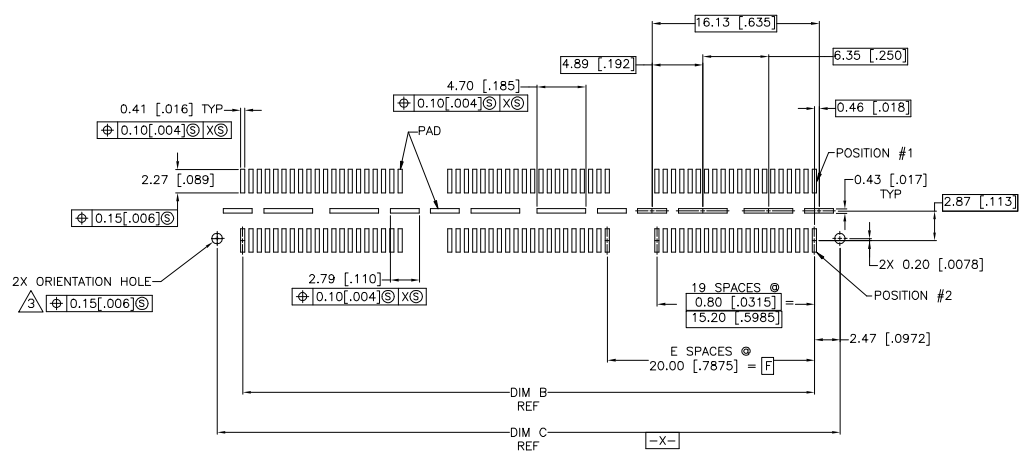
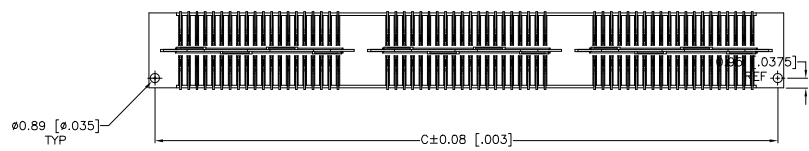


- △ HOUSING: LCP, BLACK. CONTACT & GROUND PLANE: PHOS BRONZE.
- △ CONTACT PLATING: SELECT GOLD FLASH.
- △ FOR STANDARD APPLICATIONS, ORIENTATION HOLE TO BE φ1.02 [φ.0400].



SECTION A-A

DIFFERENTIAL PAIR LOADING (BOTTOM VIEW) SCALE 2:1



RECOMMENDED PC BOARD LAYOUT (VIEWED FROM CONNECTOR SIDE)

|              |              |   |              |               |              |               |                      |             |                |            |             |             |
|--------------|--------------|---|--------------|---------------|--------------|---------------|----------------------|-------------|----------------|------------|-------------|-------------|
| 26.99(1.063) | 40.00(1.575) | 2 | 0.152(.0060) | 60.13(2.368)  | 55.20(2.173) | 61.28(2.412)  | YES                  | POCKET TAPE | YES            | 84         | 7-1658043-3 |             |
| 16.98(.669)  | 20.00(.7874) | 1 | 0.102(.0040) | 40.13(1.580)  | 35.20(1.386) | 41.28(1.625)  | YES                  | POCKET TAPE | YES            | 56         | 7-1658043-2 |             |
| 6.99(.275)   | 0(.000)      | 0 | 0.102(.0040) | 20.13(.793)   | 15.20(.598)  | 21.29(.838)   | YES                  | POCKET TAPE | YES            | 28         | 7-1658043-1 |             |
| 26.99(1.063) | 40.00(1.575) | 2 | 0.152(.0060) | 60.13(2.368)  | 55.20(2.173) | 61.28(2.412)  | YES                  | POCKET TAPE | NO             | 120        | 6-1658043-3 |             |
| 16.98(.669)  | 20.00(.7874) | 1 | 0.102(.0040) | 40.13(1.580)  | 35.20(1.386) | 41.28(1.625)  | YES                  | POCKET TAPE | NO             | 80         | 6-1658043-2 |             |
| 6.99(.275)   | 0(.000)      | 0 | 0.102(.0040) | 20.13(.793)   | 15.20(.598)  | 21.29(.838)   | YES                  | POCKET TAPE | NO             | 40         | 6-1658043-1 |             |
| -            | 40.00(1.575) | 2 | 0.152(.0060) | 60.13(2.368)  | 55.20(2.173) | 61.28(2.412)  | NO                   | POCKET TAPE | YES            | 84         | 5-1658043-3 |             |
| -            | 20.00(.7874) | 1 | 0.102(.0040) | 40.13(1.580)  | 35.20(1.386) | 41.28(1.625)  | NO                   | POCKET TAPE | YES            | 56         | 5-1658043-2 |             |
| -            | 0(.000)      | 0 | 0.102(.0040) | 20.13(.793)   | 15.20(.598)  | 21.29(.838)   | NO                   | POCKET TAPE | YES            | 28         | 5-1658043-1 |             |
| -            | 40.00(1.575) | 2 | 0.152(.0060) | 60.13(2.368)  | 55.20(2.173) | 61.28(2.412)  | NO                   | POCKET TAPE | NO             | 120        | 4-1658043-3 |             |
| -            | 20.00(.7874) | 1 | 0.102(.0040) | 40.13(1.580)  | 35.20(1.386) | 41.28(1.625)  | NO                   | POCKET TAPE | NO             | 80         | 4-1658043-2 |             |
| -            | 0(.000)      | 0 | 0.102(.0040) | 20.13(.793)   | 15.20(.598)  | 21.29(.838)   | NO                   | POCKET TAPE | NO             | 40         | 4-1658043-1 |             |
| 47.00(1.850) | 80.00(3.150) | 4 | 0.152(.0060) | 100.14(3.943) | 95.20(3.748) | 101.30(3.988) | YES                  | TRAY        | YES            | 140        | 3-1658043-5 |             |
| 36.99(1.456) | 60.00(2.362) | 3 | 0.152(.0060) | 80.14(3.155)  | 75.20(2.961) | 81.28(3.200)  | YES                  | TRAY        | YES            | 112        | 3-1658043-4 |             |
| 26.99(1.063) | 40.00(1.575) | 2 | 0.152(.0060) | 60.13(2.368)  | 55.20(2.173) | 61.28(2.412)  | YES                  | TRAY        | YES            | 84         | 3-1658043-3 |             |
| 16.98(.669)  | 20.00(.7874) | 1 | 0.102(.0040) | 40.13(1.580)  | 35.20(1.386) | 41.28(1.625)  | YES                  | TRAY        | YES            | 56         | 3-1658043-2 |             |
| 6.99(.275)   | 0(.000)      | 0 | 0.102(.0040) | 20.13(.793)   | 15.20(.598)  | 21.29(.838)   | YES                  | TRAY        | YES            | 28         | 3-1658043-1 |             |
| 47.00(1.850) | 80.00(3.150) | 4 | 0.152(.0060) | 100.14(3.943) | 95.20(3.748) | 101.30(3.988) | YES                  | TRAY        | NO             | 200        | 3-1658043-5 |             |
| 36.99(1.456) | 60.00(2.362) | 3 | 0.152(.0060) | 80.14(3.155)  | 75.20(2.961) | 81.28(3.200)  | YES                  | TRAY        | NO             | 160        | 3-1658043-4 |             |
| 26.99(1.063) | 40.00(1.575) | 2 | 0.152(.0060) | 60.13(2.368)  | 55.20(2.173) | 61.28(2.412)  | YES                  | TRAY        | NO             | 120        | 3-1658043-3 |             |
| 16.98(.669)  | 20.00(.7874) | 1 | 0.102(.0040) | 40.13(1.580)  | 35.20(1.386) | 41.28(1.625)  | YES                  | TRAY        | NO             | 80         | 3-1658043-2 |             |
| 6.99(.275)   | 0(.000)      | 0 | 0.102(.0040) | 20.13(.793)   | 15.20(.598)  | 21.29(.838)   | YES                  | TRAY        | NO             | 40         | 3-1658043-1 |             |
| -            | 80.00(3.150) | 4 | 0.152(.0060) | 100.14(3.943) | 95.20(3.748) | 101.30(3.988) | NO                   | TRAY        | YES            | 140        | 1-1658043-5 |             |
| -            | 60.00(2.362) | 3 | 0.152(.0060) | 80.14(3.155)  | 75.20(2.961) | 81.28(3.200)  | NO                   | TRAY        | YES            | 112        | 1-1658043-4 |             |
| -            | 40.00(1.575) | 2 | 0.152(.0060) | 60.13(2.368)  | 55.20(2.173) | 61.28(2.412)  | NO                   | TRAY        | YES            | 84         | 1-1658043-3 |             |
| -            | 20.00(.7874) | 1 | 0.102(.0040) | 40.13(1.580)  | 35.20(1.386) | 41.28(1.625)  | NO                   | TRAY        | YES            | 56         | 1-1658043-2 |             |
| -            | 0(.000)      | 0 | 0.102(.0040) | 20.13(.793)   | 15.20(.598)  | 21.29(.838)   | NO                   | TRAY        | YES            | 28         | 1-1658043-1 |             |
| -            | 80.00(3.150) | 4 | 0.152(.0060) | 100.14(3.943) | 95.20(3.748) | 101.30(3.988) | NO                   | TRAY        | NO             | 200        | 1658043-5   |             |
| -            | 60.00(2.362) | 3 | 0.152(.0060) | 80.14(3.155)  | 75.20(2.961) | 81.28(3.200)  | NO                   | TRAY        | NO             | 160        | 1658043-4   |             |
| -            | 40.00(1.575) | 2 | 0.152(.0060) | 60.13(2.368)  | 55.20(2.173) | 61.28(2.412)  | NO                   | TRAY        | NO             | 120        | 1658043-3   |             |
| -            | 20.00(.7874) | 1 | 0.102(.0040) | 40.13(1.580)  | 35.20(1.386) | 41.28(1.625)  | NO                   | TRAY        | NO             | 80         | 1658043-2   |             |
| -            | 0(.000)      | 0 | 0.102(.0040) | 20.13(.793)   | 15.20(.598)  | 21.29(.838)   | NO                   | TRAY        | NO             | 40         | 1658043-1   |             |
| G            | F            | E | D            | C             | B            | A             | POLYIMIDE FILM PAD ▲ |             | PACKAGING TYPE | DIFF. PAIR | NO OF POS   | PART NUMBER |

THIS DRAWING IS A CONTROLLED DOCUMENT. DWG. # 100779

DIMENSIONS: mm (INCHES)

TE CONNECTIVITY

RECEPTACLE ASSEMBLY, VERTICAL, 0.80MM CL, MICTOR SB

SCALE: 4:1

## X-ON Electronics

Largest Supplier of Electrical and Electronic Components

*Click to view similar products for [Board to Board & Mezzanine Connectors](#) category:*

*Click to view products by [TE Connectivity](#) manufacturer:*

Other Similar products are found below :

[589158040000018](#) [MDF7C-18P-2.54DSA\(55\)](#) [FCN-230C068-11](#) [FCN-268F012-G/BD](#) [FCN-268F036-G/BD](#) [FCN-268M012-G/0D](#) [FCN-268M024-G/1D](#) [FCN-723J004/1](#) [MIS-048-01-F-D-DP-K](#) [832-10-034-10-001000](#) [FX4C-80S-1.27DSA](#) [FCN-214Q030-G/0](#) [FCN-234P048-G/0](#) [FCN-235D050-G/C](#) [210-93-314-41-105000](#) [2-22603-0](#) [MDF7-40DP-2.54DSA\(55\)](#) [AXG720047](#) [5031084030](#) [MIT-114-03-F-D-K](#) [55323-1519](#) [DF33-2P-3.3DSA\(24\)](#) [YFT-20-05-H-03-SB-K](#) [503308-3040](#) [026-6203-PDB](#) [027-6203-PDB](#) [069159702701000](#) [10123981-102LF](#) [101A10019X](#) [55650-0588-C](#) [68682-310LF](#) [68684-306](#) [75140-7012](#) [87471-650](#) [194261-1](#) [FCN-268F024-G0D](#) [10124054-515LF](#) [68685-603](#) [8-1616154-3](#) [MIS-019-01-F-D](#) [FCN-268M024-G/3D](#) [20021832-06016C1LF](#) [KX15-20KLDL-E1000E](#) [MDF7-16DP-2.54DSA\(55\)](#) [AXE810124](#) [FCN-214J100-G/0](#) [FCN-230C068-E/S](#) [AXE812124](#) [AXE816124](#) [AXE720127](#)