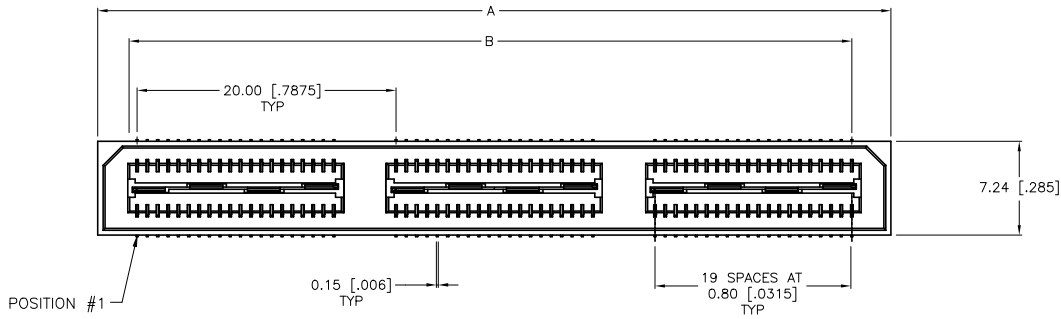
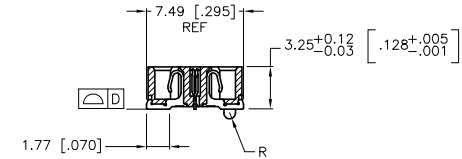
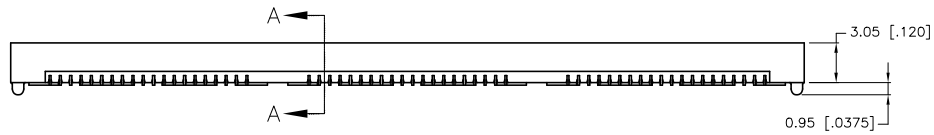


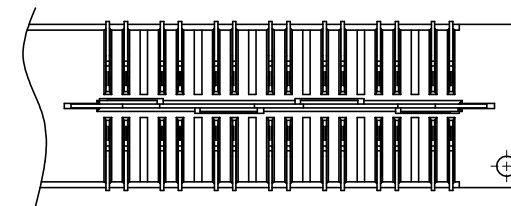
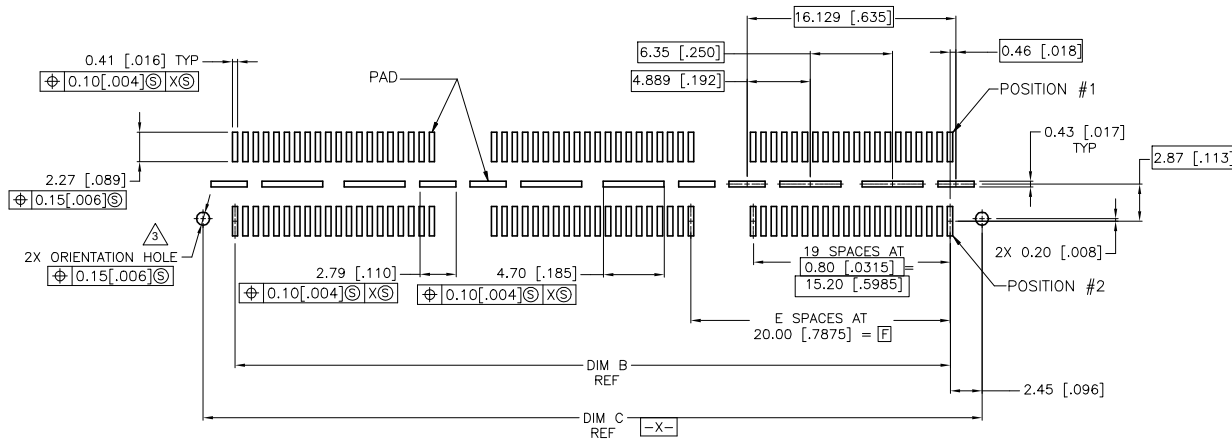
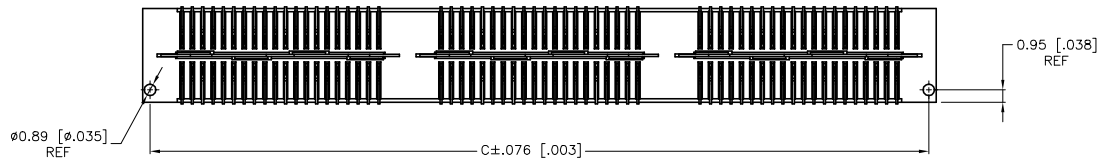
| REVISIONS |      |                           |           |            |
|-----------|------|---------------------------|-----------|------------|
| #         | DATE | DESCRIPTION               | DATE      | BY / APP'D |
| L         |      | REVISED PER ECR-19-008349 | 29MAY2019 | AL / HL    |



- 1 HOUSING: LCP, BLACK.  
CONTACT & GROUND PLANE: PHOS BRONZE.
- 2 CONTACT PLATING: SELECT 0.25 MICROMETERS (.000010 IN) MIN. GOLD.
- 3 FOR STANDARD APPLICATIONS, ORIENTATION HOLE TO BE  $\phi 1.02$  [ $\phi 0.0400$ ].



SECTION A-A



DIFFERENTIAL PAIR LOADING  
 (BOTTOM VIEW)  
 SCALE 8:1

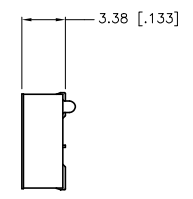
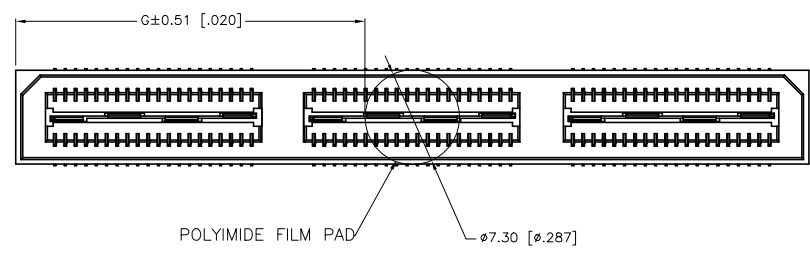
RECOMMENDED PC BOARD LAYOUT  
 VIEWED FROM CONNECTOR SIDE)

|  |  |                               |                   |                      |
|--|--|-------------------------------|-------------------|----------------------|
| THIS DRAWING IS A CONTROLLED DOCUMENT. |  | DATE: 27MAY03                 | BY: J. CARBO      | TE Connectivity Ltd. |
| DRAWN: J. CARBO                        |  | DATE: 27MAY03                 | CHK: J. DIXON     | TE Connectivity Ltd. |
| APPROVED: J. DIXON                     |  | DATE: 27MAY03                 | NAME: J. DIXON    | TE Connectivity Ltd. |
| PRODUCT SPEC: 0.80MM CL.               |  | RECEPTACLE ASSEMBLY, VERTICAL |                   |                      |
| APPLICATION SPEC: -                    |  | 0.80MM CL.                    |                   |                      |
| MATERIAL: -                            |  | SIZE: A1                      | CAGE CODE: 100779 | DRAWING NO: 1658462  |
| FINISH: -                              |  | SCALE: 4:1                    | SHEET: 1 of 2     | REV: 1               |
| CUSTOMER DRAWING                       |  |                               |                   |                      |

THIS DRAWING IS UNCLASSIFIED  
 RELEASED FOR PUBLIC USE  
 ALL RIGHTS RESERVED

| REVISIONS |    |                           |           |           |
|-----------|----|---------------------------|-----------|-----------|
| #         | LR | DESCRIPTION               | DATE      | BY / APPR |
| L         |    | REVISED PER ECR-19-008349 | 29MAY2019 | AL / HL   |

- ① HOUSING: LCP, BLACK.  
CONTACT & GROUND PLANE: PHOS BRONZE.
- ② CONTACT PLATING: SELECT 0.25 MICROMETERS (.000010 IN) MIN. GOLD.
- ③ FOR STANDARD APPLICATIONS, ORIENTATION HOLE TO BE  $\phi 1.02$  [ $\phi.0400$ ].
- ④ OBSOLETE PARTS: OBSOLETE CIS STREAMLINING PER D.RENAUD/D.SINISI



|              |              |   |              |               |              |               |     |                      |                |           |                |
|--------------|--------------|---|--------------|---------------|--------------|---------------|-----|----------------------|----------------|-----------|----------------|
| 26.99(1.063) | 40.00(1.575) | 2 | 0.152(.0060) | 60.13(2.368)  | 55.20(2.173) | 61.28(2.412)  | YES | POCKET TAPE          | YES            | 84        | 7-1658462-3    |
| 16.98(.669)  | 20.00(.7874) | 1 | 0.102(.0040) | 40.13(1.580)  | 35.20(1.386) | 41.28(1.625)  | YES | POCKET TAPE          | YES            | 56        | 7-1658462-2    |
| 6.99(.275)   | 0(.000)      | 0 | 0.102(.0040) | 20.13(.793)   | 15.20(.598)  | 21.29(.838)   | YES | POCKET TAPE          | YES            | 28        | 7-1658462-1    |
| 26.99(1.063) | 40.00(1.575) | 2 | 0.152(.0060) | 60.13(2.368)  | 55.20(2.173) | 61.28(2.412)  | YES | POCKET TAPE          | NO             | 120       | 6-1658462-3    |
| 16.98(.669)  | 20.00(.7874) | 1 | 0.102(.0040) | 40.13(1.580)  | 35.20(1.386) | 41.28(1.625)  | YES | POCKET TAPE          | NO             | 80        | 6-1658462-2    |
| 6.99(.275)   | 0(.000)      | 0 | 0.102(.0040) | 20.13(.793)   | 15.20(.598)  | 21.29(.838)   | YES | POCKET TAPE          | NO             | 40        | 6-1658462-1    |
| -            | 40.00(1.575) | 2 | 0.152(.0060) | 60.13(2.368)  | 55.20(2.173) | 61.28(2.412)  | NO  | POCKET TAPE          | YES            | 84        | 5-1658462-3    |
| -            | 20.00(.7874) | 1 | 0.102(.0040) | 40.13(1.580)  | 35.20(1.386) | 41.28(1.625)  | NO  | POCKET TAPE          | YES            | 56        | 5-1658462-2    |
| -            | 0(.000)      | 0 | 0.102(.0040) | 20.13(.793)   | 15.20(.598)  | 21.29(.838)   | NO  | POCKET TAPE          | YES            | 28        | 5-1658462-1    |
| -            | 40.00(1.575) | 2 | 0.152(.0060) | 60.13(2.368)  | 55.20(2.173) | 61.28(2.412)  | NO  | POCKET TAPE          | NO             | 120       | 4-1658462-3    |
| -            | 20.00(.7874) | 1 | 0.102(.0040) | 40.13(1.580)  | 35.20(1.386) | 41.28(1.625)  | NO  | POCKET TAPE          | NO             | 80        | 4-1658462-2    |
| -            | 0(.000)      | 0 | 0.102(.0040) | 20.13(.793)   | 15.20(.598)  | 21.29(.838)   | NO  | POCKET TAPE          | NO             | 40        | 4-1658462-1    |
| 47.00(1.850) | 80.00(3.150) | 4 | 0.152(.0060) | 100.14(3.943) | 95.20(3.748) | 101.30(3.988) | YES | TRAY                 | YES            | 140       | 3-1658462-5    |
| 36.99(1.456) | 60.00(2.362) | 3 | 0.152(.0060) | 80.14(3.155)  | 75.20(2.961) | 81.28(3.200)  | YES | TRAY                 | YES            | 112       | 3-1658462-4    |
| 26.99(1.063) | 40.00(1.575) | 2 | 0.152(.0060) | 60.13(2.368)  | 55.20(2.173) | 61.28(2.412)  | YES | TRAY                 | YES            | 84        | 3-1658462-3    |
| 16.98(.669)  | 20.00(.7874) | 1 | 0.102(.0040) | 40.13(1.580)  | 35.20(1.386) | 41.28(1.625)  | YES | TRAY                 | YES            | 56        | 3-1658462-2    |
| 6.99(.275)   | 0(.000)      | 0 | 0.102(.0040) | 20.13(.793)   | 15.20(.598)  | 21.29(.838)   | YES | TRAY                 | YES            | 28        | 3-1658462-1    |
| 47.00(1.850) | 80.00(3.150) | 4 | 0.152(.0060) | 100.14(3.943) | 95.20(3.748) | 101.30(3.988) | YES | TRAY                 | NO             | 200       | 2-1658462-5    |
| 36.99(1.456) | 60.00(2.362) | 3 | 0.152(.0060) | 80.14(3.155)  | 75.20(2.961) | 81.28(3.200)  | YES | TRAY                 | NO             | 160       | 2-1658462-4    |
| 26.99(1.063) | 40.00(1.575) | 2 | 0.152(.0060) | 60.13(2.368)  | 55.20(2.173) | 61.28(2.412)  | YES | TRAY                 | NO             | 120       | 2-1658462-3    |
| 16.98(.669)  | 20.00(.7874) | 1 | 0.102(.0040) | 40.13(1.580)  | 35.20(1.386) | 41.28(1.625)  | YES | TRAY                 | NO             | 80        | 2-1658462-2    |
| 6.99(.275)   | 0(.000)      | 0 | 0.102(.0040) | 20.13(.793)   | 15.20(.598)  | 21.29(.838)   | YES | TRAY                 | NO             | 40        | 2-1658462-1    |
| -            | 80.00(3.150) | 4 | 0.152(.0060) | 100.14(3.943) | 95.20(3.748) | 101.30(3.988) | NO  | TRAY                 | YES            | 140       | 1-1658462-5    |
| -            | 60.00(2.362) | 3 | 0.152(.0060) | 80.14(3.155)  | 75.20(2.961) | 81.28(3.200)  | NO  | TRAY                 | YES            | 112       | 1-1658462-4    |
| -            | 40.00(1.575) | 2 | 0.152(.0060) | 60.13(2.368)  | 55.20(2.173) | 61.28(2.412)  | NO  | TRAY                 | YES            | 84        | 1-1658462-3    |
| -            | 20.00(.7874) | 1 | 0.102(.0040) | 40.13(1.580)  | 35.20(1.386) | 41.28(1.625)  | NO  | TRAY                 | YES            | 56        | 1-1658462-2    |
| -            | 0(.000)      | 0 | 0.102(.0040) | 20.13(.793)   | 15.20(.598)  | 21.29(.838)   | NO  | TRAY                 | YES            | 28        | 1-1658462-1    |
| -            | 80.00(3.150) | 4 | 0.152(.0060) | 100.14(3.943) | 95.20(3.748) | 101.30(3.988) | NO  | TRAY                 | NO             | 200       | 1658462-5      |
| -            | 60.00(2.362) | 3 | 0.152(.0060) | 80.14(3.155)  | 75.20(2.961) | 81.28(3.200)  | NO  | TRAY                 | NO             | 160       | 1658462-4      |
| -            | 40.00(1.575) | 2 | 0.152(.0060) | 60.13(2.368)  | 55.20(2.173) | 61.28(2.412)  | NO  | TRAY                 | NO             | 120       | 1658462-3      |
| -            | 20.00(.7874) | 1 | 0.102(.0040) | 40.13(1.580)  | 35.20(1.386) | 41.28(1.625)  | NO  | TRAY                 | NO             | 80        | 1658462-2      |
| -            | 0(.000)      | 0 | 0.102(.0040) | 20.13(.793)   | 15.20(.598)  | 21.29(.838)   | NO  | TRAY                 | NO             | 40        | 1658462-1      |
| G            | F            | E | D            | C             | B            | A             |     | POLYIMIDE FILM Pad A | PACKAGING TYPE | DIFF PAIR | NO OF PART POS |

THIS DRAWING IS A CONTROLLED DOCUMENT.

DRG: CARBO 27MAY03  
 OR: DIXON 27MAY03

APPROVED: [Signature]

DATE: 27MAY03

NAME: [Name]

PROJECT SPEC: [Project Spec]

APPLICATION SPEC: [Application Spec]

WEIGHT: [Weight]

CUSTOMER DRAWING

SCALE: 4:1

SHEET: 1 of 2

REV: 1

RESTRICTED TO: [Restriction]

TE Connectivity Ltd.  
 RECEPTACLE ASSEMBLY, VERTICAL  
 0.80MM CL,  
 MICROTOR SB

SIZE: A1  
 CASE CODE: 00779  
 DRAWING NO: 1658462

## X-ON Electronics

Largest Supplier of Electrical and Electronic Components

*Click to view similar products for [Board to Board & Mezzanine Connectors](#) category:*

*Click to view products by [TE Connectivity](#) manufacturer:*

Other Similar products are found below :

[10135583-642402LF](#) [89885-310LF](#) [589158040000018](#) [6-1393048-0](#) [68683-613](#) [MDF7-12DP-2.54DSA](#) [MDF7-18P-2.54DSA\(01\)](#) [MDF7-20DP-2.54DSA](#) [MDF7-26D-2.54DSA\(55\)](#) [MDF7-3P-2.54DSA\(01\)](#) [MDF7B-20P-2.54DSA\(01\)](#) [MDF7B-3P-2.54DSA\(55\)](#) [MDF7C-18P-2.54DSA\(55\)](#) [MDF7P-5P-2.54DSA\(55\)](#) [75234-0516](#) [FCN-230C068-11](#) [FCN-268F012-G/BD](#) [FCN-268F036-G/BD](#) [FCN-268M012-G/0D](#) [FCN-268M024-G/1D](#) [FCN-360C008-C](#) [FCN-723J004/1](#) [MIS-048-01-F-D-DP-K](#) [832-10-034-10-001000](#) [93696-325LF](#) [11828-1FA](#) [AXK630345P](#) [18097-0013](#) [2007042-2](#) [304400-2](#) [FCN-214Q030-G/0](#) [FCN-215Q040-G/0](#) [FCN-230C068-ESA](#) [FCN-234P048-G/0](#) [FCN-235D050-G/C](#) [FCN-360A3](#) [FCN-360C040-B](#) [210-93-314-41-105000](#) [2-22603-0](#) [379-064-521-202](#) [MDF7-12P-2.54DSA\(01\)](#) [MDF7-16P-2.54DS\(56\)](#) [MDF7-16P-2.54DSA\(55\)](#) [MDF7-40DP-2.54DSA\(55\)](#) [MDF7-8P-2.54DSA\(55\)](#) [AXG720047](#) [5031084030](#) [55323-1519](#) [DF33-2P-3.3DSA\(24\)](#) [DF33-2S-3.3C](#)