

4

3

2

1

THIS DRAWING IS UNPUBLISHED.

RELEASED FOR PUBLICATION

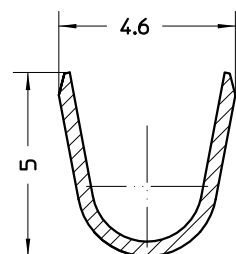
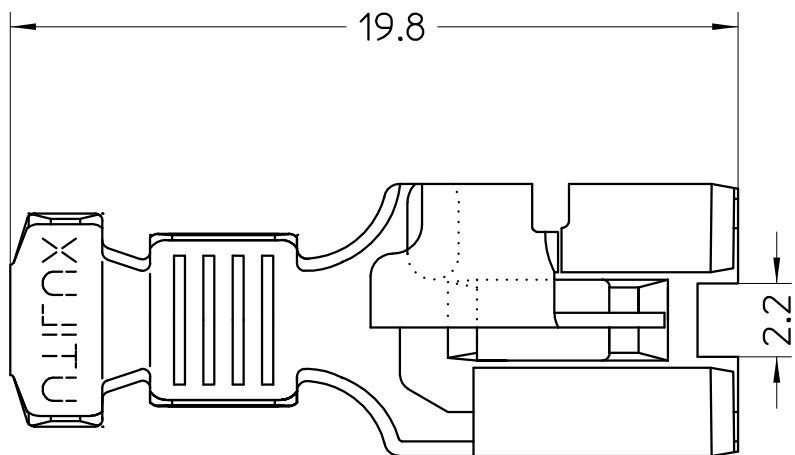
© COPYRIGHT - BY TYCO ELECTRONICS CORPORATION.

ALL RIGHTS RESERVED.

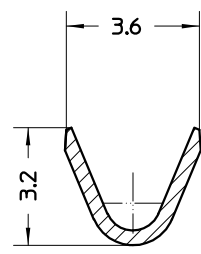
LOC U DIST -

REVISIONS

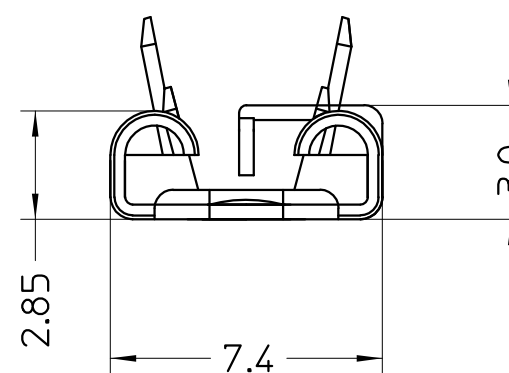
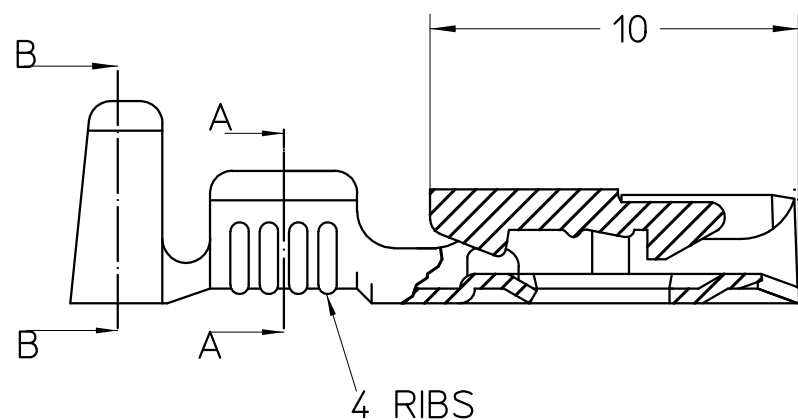
P	LTR	DESCRIPTION	DATE	DWN	APVD
0		REDRAWN - WAS UTILUX DRG	-	-	-



SECTION B-B



SECTION A-A



NOTES:

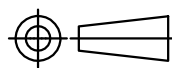
- 1. WIRE RANGE
 CONDUCTOR: 0.5mm² - 1.0mm²
 MAX. INSULATION DIA: 2.6mm
- 2. USE WITH INSULATOR P/N 1-1661612-0 (H30011)

THIS INFORMATION IS CONFIDENTIAL AND PROPRIETARY TO TYCO ELECTRONICS CORPORATION AND ITS WORLDWIDE SUBSIDIARIES AND AFFILIATES. IT MAY NOT BE DISCLOSED TO ANYONE OTHER THAN TYCO ELECTRONICS PERSONNEL WITHOUT WRITTEN AUTHORIZATION FROM TYCO ELECTRONICS CORPORATION, HARRISBURG, PENNSYLVANIA, USA.

THIS DRAWING IS A CONTROLLED DOCUMENT.

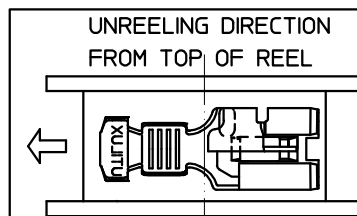
ALL DIMENSIONS IN mm:

TOLERANCES UNLESS OTHERWISE SPECIFIED:	
DIMENSION (mm)	TOLERANCE (+mm)
LESS THAN 10	0.40
OVER 10 TO 30	0.50
OVER 30 TO 80	0.70
OVER 80 TO 250	1.00
ANGLES	±2°



MATERIAL SEE TABLE

FINISH SEE TABLE



BRASS - PRE TIN	RECEPTACLE, H25734	1-1659250-0
MATERIAL DESC.	DESCRIPTION (UTILUX P/N)	PART No.
DWN: H. THAI 20 JAN 06	Tyco Electronics Corporation AUSTRALIA	
CHK: W. RIEDE 23JAN 06	NAME: RECEPTACLE, QC 6.3 PIVOT LOCK	
APVD: -	SIZE: A3	CAGE CODE: -
PRODUCT SPEC: -	DRAWING NO: C-1659250	
APPLICATION SPEC: -	RESTRICTED TO: -	
WEIGHT: appr. 0.75gr	SCALE: 5:1	SHEET 1 OF 1
CUSTOMER DRAWING		REV 0

X-ON Electronics

Largest Supplier of Electrical and Electronic Components

Click to view similar products for [Terminals](#) category:

Click to view products by [TE Connectivity](#) manufacturer:

Other Similar products are found below :

[00-054007-01074-6](#) [00-054007-70206-1](#) [00-054007-70210-8](#) [00-054007-70217-7](#) [00-054007-70226-9](#) [00-054007-70228-3](#) [00-054007-70248-1](#) [00-054007-70256-6](#) [00-054007-70301-3](#) [00-054007-70316-7](#) [00-054007-49560-4](#) [00-054007-70209-2](#) [00-054007-70225-2](#) [00-054007-70227-6](#) [00-054007-70231-3](#) [00-054007-70241-2](#) [00-054007-70242-9](#) [00-054007-70244-3](#) [00-054007-70246-7](#) [00-054007-70263-4](#) [00-054007-70288-7](#) [00-054007-70290-0](#) [00-054007-70300-6](#) [00-054007-70304-4](#) [01-2065-1-0216](#) [01-2900-1-04412](#) [00581P0075](#) [600TS-10](#) [60205-1](#) [604200-1](#) [605601-1](#) [60598-1-CUT-TAPE](#) [61314-6-C](#) [61810-3](#) [61-S](#) [61-SN](#) [626-0194](#) [62-NBM-A](#) [62-SN](#) [62-SP](#) [63-S](#) [640179-1](#) [M55155/059I03](#) [M55155/079C01](#) [M55155/099H02](#) [M55155/109H01](#) [M55155/109H02](#) [M55155/12XH05](#) [M55155/16XH02](#) [M55155/29-5S](#)