

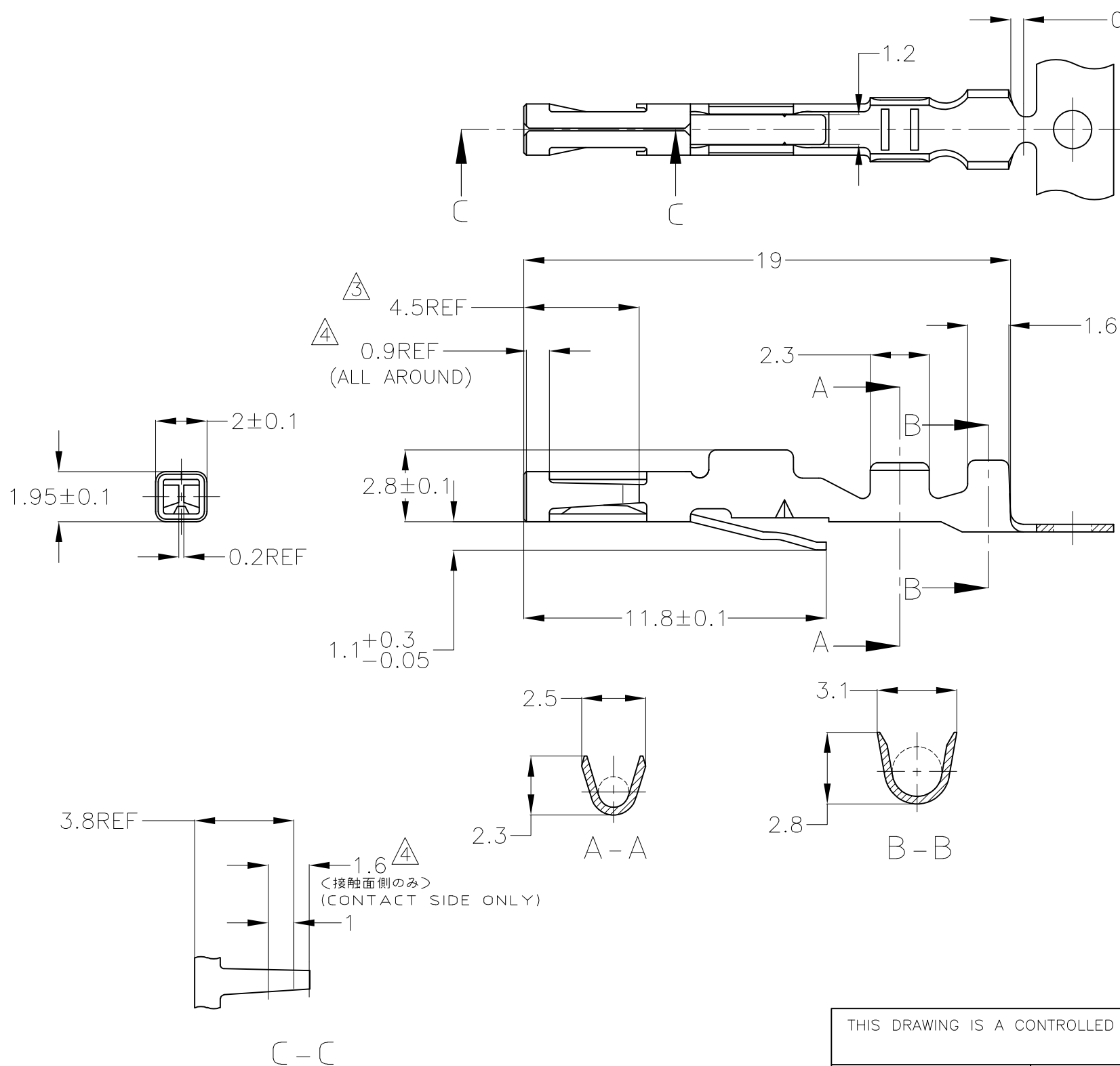
THIS DRAWING IS UNPUBLISHED.

RELEASED FOR PUBLICATION

ALL RIGHTS RESERVED.

© COPYRIGHT 2003 By -

LOC	DIST	REVISIONS 変更					
J	-	P	LTR	DESCRIPTION	DATE	DWN	APVD
			H2	REVISED PER ECO-11-005140	28MAR11	RK	HMR



注:

- 1 使用ハウジング型番 172021,172047 他
- 2 製品規格: 108-5124
- ③ 全面ニッケルめっきの上に4.5mmの部分に0.38μm以上の金めっき
- ④ 全面ニッケルめっきの上に接触バネ内側 1.6mmの部分に0.38μm以上の金めっき コンタクト先端 0.9mmのところを金フラッシュめっき
- ⑤ 1-170291-1の逆巻きリール

NOTES:

- 1 MATALE HOUSING: 172021,172047 AND OTHERS
- 2 PRODUCT SPECIFICATION: 108-5124
- ③ 0.38μm MIN. SELECTIVE GOLD PLATING IN 4.5mm LENGTH OVER NICKEL PLATING
- ④ 0.38μm MIN. SELECTIVE GOLD IN 1.6mm LENGTH (INSIDE OF LEAF) OVER NICKEL PLATING, GOLD FLASH PLATING IN TIP OF CONTACT 0.9mm LENGTH
- ⑤ REVERSE REEL OF 1-170291-1

型番 (NUMBER)	材料 (MATERIAL)	仕上 (FINISH)	バラ端子型番 (L/P PART NUMBER)
1-170291-1	黄銅, BRASS, 0.3t	錫めっき済 PRE-TINND MAT'L	1-170321-1
OBSOLETE	1-170291-3	黄銅, BRASS, 0.3t	---
1-170291-4	リン青銅, 0.3t PHOS-BZ	錫めっき済 PRE-TINND MAT'L	1-170321-4
1-170291-7	リン青銅, 0.3t PHOS-BZ	---	---
⑤	3-170291-1	黄銅, BRASS, 0.3t	錫めっき済 PRE-TINND MAT'L

THIS DRAWING IS A CONTROLLED DOCUMENT.

DWN A.YAMAGUCHI 09JUL03

CHK K.BETSUI 09JUL03

APVD K.BETSUI 09JUL03

NAME 名称

PRODUCT SPEC 製品規格 108-5124

APPLICATION SPEC 取付適用規格 114-5045

WEIGHT -

SIZE A3

CAGE CODE 00779

DRAWING NO 番号 C-170291

RESTRICTED TO

CUSTOMER DRAWING

SCALE 尺度 5:1

SHEET 1 OF 1

REV H2

WIRE RANGE 0.3~0.56mm <sup>2</sup> (AWG#22-#20)
INSULATION DIA. 2.4mm MAX.

DIMENSIONS: 単位: 耗 mm	TOLERANCES UNLESS OTHERWISE SPECIFIED: 一般公差 ±0.3
	①-PLC ± ±1°
	②-PLC ± ±
	③-PLC ± ±
	④-PLC ± ±
MATERIAL 材料	FINISH 仕上
SEE TABLE	SEE TABLE

## X-ON Electronics

Largest Supplier of Electrical and Electronic Components

*Click to view similar products for [Terminals](#) category:*

*Click to view products by [TE Connectivity](#) manufacturer:*

Other Similar products are found below :

[HT-13-10](#) [71M-250-32-NB](#) [01-2065-1-0216](#) [00581P0075](#) [M10-10RX](#) [M10BCK](#) [60205-1](#) [604200-1](#) [60598-1-CUT-TAPE](#) [60617-1-C](#) [60873-1](#) [M14-516R/SK](#) [M14-6RSX](#) [M18-8FBX](#) [M18-8R/LX](#) [M18BCK](#) [61314-6-C](#) [61-S](#) [61-SN-A](#) [62-NBM-A](#) [63-S](#) [640179-1](#) [640917-2-CUT-TAPE](#) [6501550002](#) [66107-2-C](#) [696683-1](#) [696834-1](#) [696861-1](#) [696931-1](#) [696999-1](#) [M8-516RK](#) [M86700006](#) [MA250DMFMX-A](#) [701-2007](#) [701-2307](#) [701-7761-03](#) [70F-110-32-PB](#) [718-N-A](#) [71M-187-20-NBL](#) [71M-250-32-NBL](#) [72F-187-20-NBL](#) [72M-250-32-NBL](#) [7310](#) [73F-250-32](#) [73F-250-32-NL](#) [F14-10C](#) [F-1M](#) [751-250](#) [76650-5002](#) [76828-149](#)