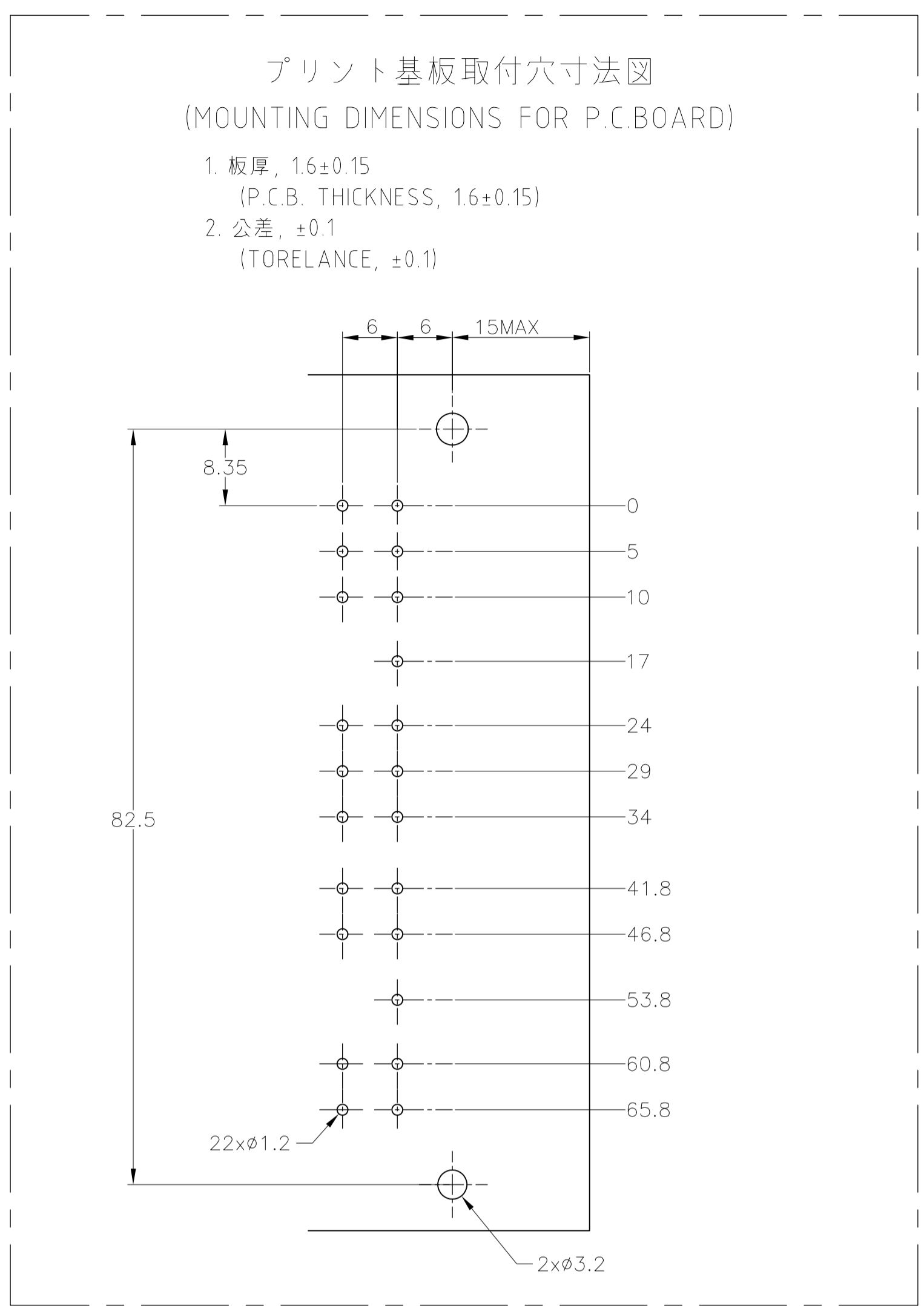
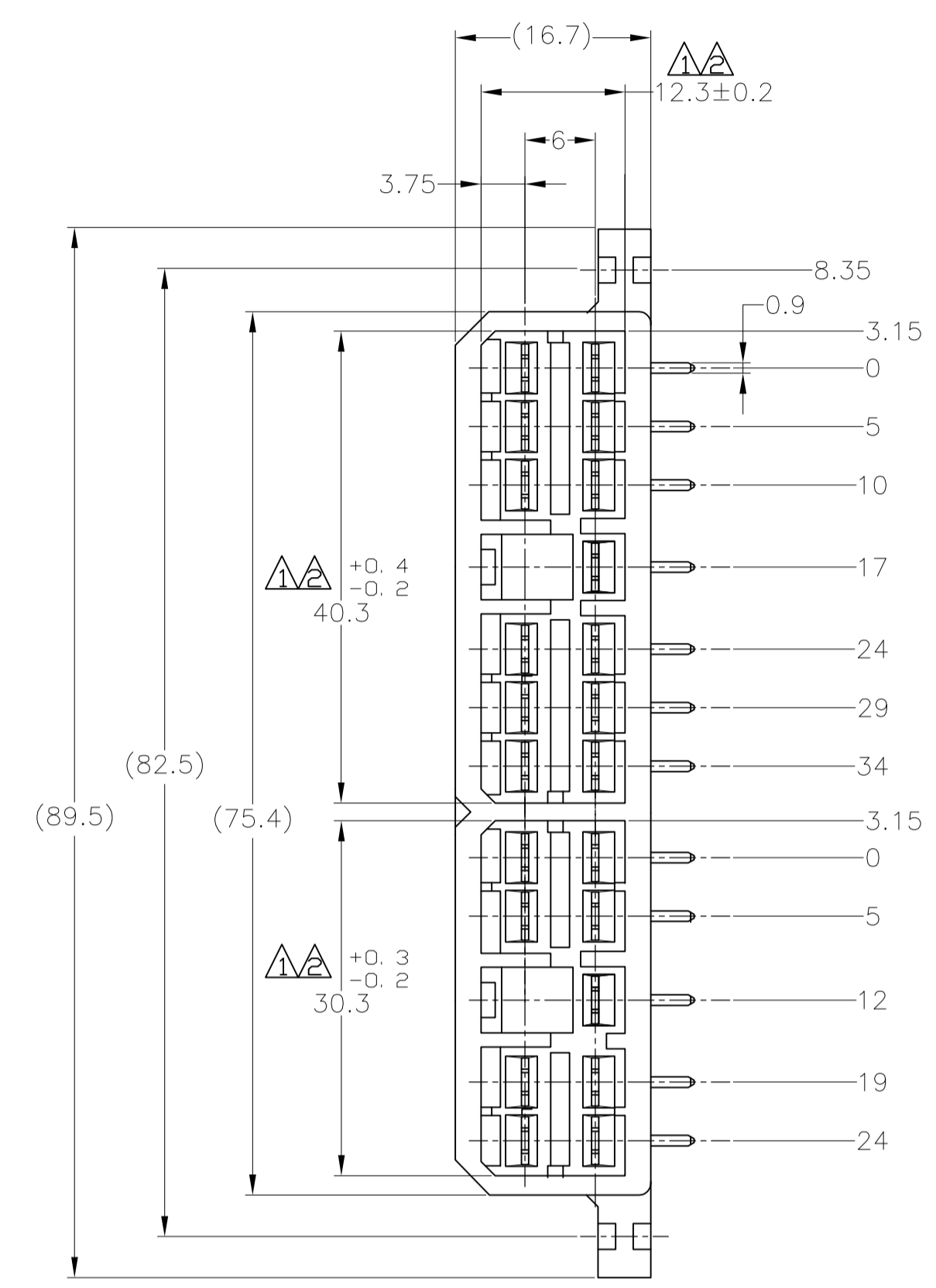
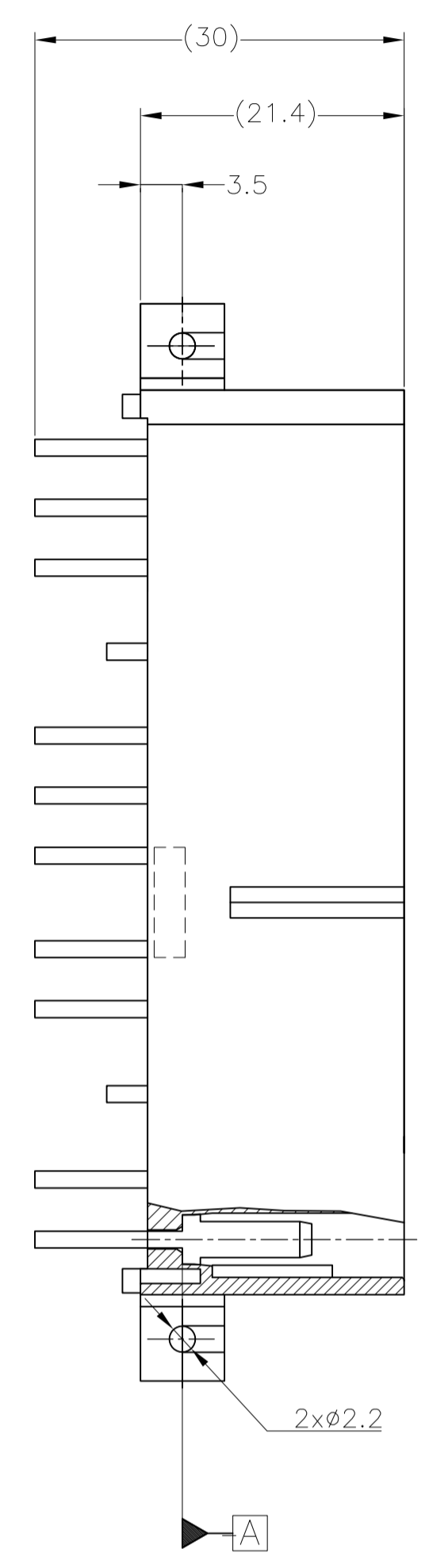
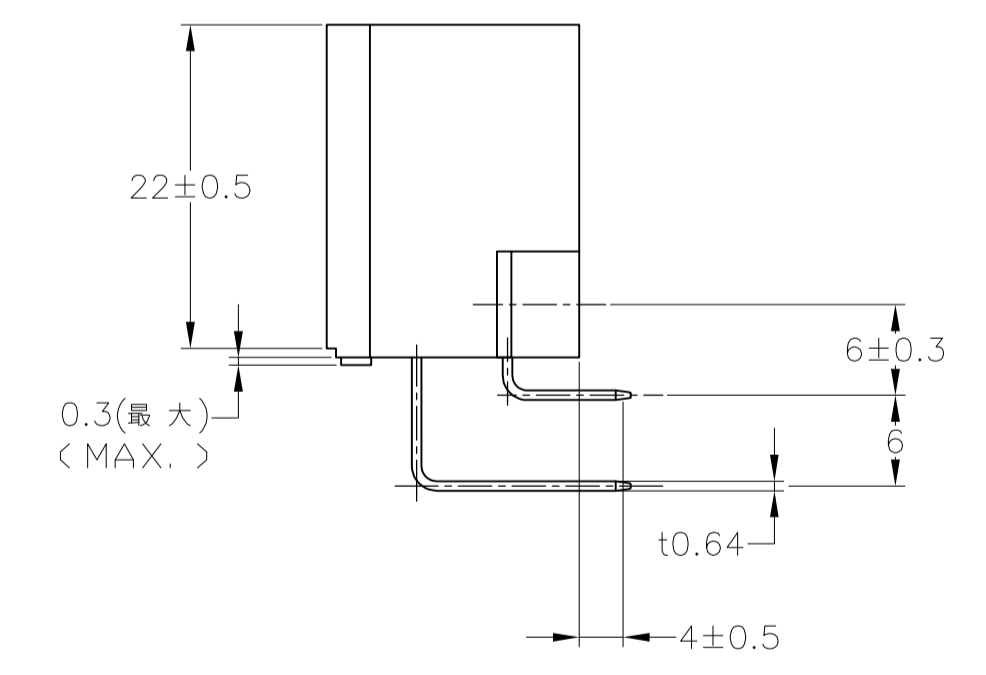
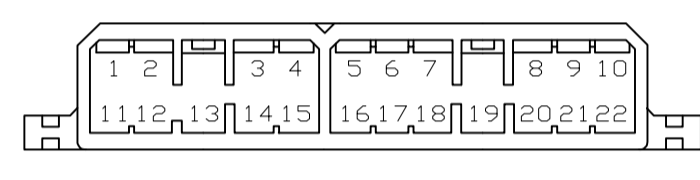


REVISIONS					
REV	DATE	DESCRIPTION	BY	CHK	APPV
J3	01APR2016	OBSOLETE 3--6 ECR-16-003004	KF	RK	



注記:
 [A] 面より2mmの範囲で測定のこと。
 相手ハウジングと所定の機能を満たしてかん合できること。
 フードの戻りは0.2以内。
 4 推奨取付けねじ: JIS B 1115 又は、1122 タッピングねじ
 なべ1種又は2種、呼び径3長さ6mm以下。
 (締め付けトルク: 39.2N-m 以下)
 5 適用製品規格: 108-5093
 6 相手ハウジングとのかん合力は、29.4N以下
 但し、リセプタクルコンタクトは含まない。
 △タブなしタイプ(表参照)回路番号下図参照のこと。

NOTES:
 △ TO BE MEASURED WITHIN 2mm FROM [A]
 △ IN COUPLING WITH THE PLUG HOUSING MATING SATISFIES FUNCTION
 △ WARPAGE 0.2 MAX.
 4 RECOMMENDED MOUNTING SCREW: 3mm DIA, 6mm LENGTH (MAX.)
 PAN HEAD, CLASS 1 AND 2 TAPPING SCREW SPECIFIED IN JIS B1115, B1122 (TIGHTENING TORQUE: 39.2N-cm MAX.)
 5 SPEC. No. 108-5093
 6 IN COUPLING WITH THE PLUG HOUSING MATING FORCE 29.4N MAX WITHOUT RECEPTACLE CONTACT
 △ GOLD PLATED POSITION NUMBER.
 NON TAB CONTACTS ; TYPE(SEE TABLE)CIRCUIT NUMBER



OBSOLETE	FINISH	CONTACT FINISH	COLOR	PART NUMBER
		PRE-TIN	GRAY	5171896-6
		SELECTIVE-TIN (MATTE)	GRAY	3-5171896-6
		SELECTIVE GOLD (0.38μm MIN.)	GRAY	3-171896-6
		PRE-TIN	NATURAL	2-171896-1
		TIN-LEAD	GRAY	1-171896-6
		SELECTIVE GOLD (0.38μm MIN.)	GREEN	1-171896-4
		PRE-TIN	NATURAL	1-171896-1
		TIN-LEAD	YELLOW	171896-7
		SELECTIVE GOLD (0.38μm MIN.)	GRAY	171896-6
		PRE-TIN	BLUE	171896-5
		TIN-LEAD	GREEN	171896-4
		SELECTIVE GOLD (0.38μm MIN.)	BROWN	171896-3
		PRE-TIN	BLACK	171896-2
		TIN-LEAD	NATURAL	171896-1
		PRE-TIN		
△NON TAB PLACES タブなし箇所	SOLDERING SIDE 半田付け部	CONTACT SIDE 接触部側	COLOR 色	PART NUMBER 製品型番

TOLERANCE UNLESS OTHERWISE SPECIFIED.
 公差
 0 <= x <= 10 : ±0.2
 10 <= x <= 30 : ±0.25
 30 <= x <= 100 : ±0.3
 ANGLE : ±3°

THIS DRAWING IS A CONTROLLED DOCUMENT. DIN I. SHINOHARA 31AUG07
 CHK K. BETSUJI 31AUG07
 APVD K. BETSUJI 31AUG07 NAME 氏名
 PRODUCT SPEC 製品規格 108-5093
 APPLICATION SPEC 取付適用規格

MATERIAL 材料 HSG: 66 NYLON CONTACT: BRASS FINISH 仕上 SEE TABLE WEIGHT 0

SCALE 尺度 2:1 SHEET 1 OF 1 REV J3

STE TE Connectivity
 22P HORIZONTAL TYPE CAP HOUSING ASS'Y
 MULTI-INTERLOCK CONN. (W TO B)

CUSTOMER DRAWING

X-ON Electronics

Largest Supplier of Electrical and Electronic Components

Click to view similar products for [Headers & Wire Housings](#) category:

Click to view products by [TE Connectivity](#) manufacturer:

Other Similar products are found below :

[95000-104TRLF](#) [10135584-644402LF](#) [DF62W-EP2022PCA](#) [95000-106TRLF](#) [DF62W-2022SCA](#) [DF62W-EP2022PC](#) [2203348](#) [DF62W-2022SC](#) [1084018](#) [1029039](#) [1084017](#) [802-10-012-10-002000](#) [1112640](#) [1112639](#) [000-34000](#) [0009482033](#) [0009507031](#) [57102-S06-03LF](#) [57202-S52-04LF](#) [PCN6-15S-2.5E](#) [0039019024](#) [58102-G61-06LF](#) [582553-1](#) [0009485154](#) [0009508121](#) [0022285053](#) [0050291907](#) [018731A](#) [LY20-4P-DT1-P1E-BR](#) [02.125.8002.8](#) [60101931](#) [60598-1 \(Cut Strip\)](#) [M1625-3R/100](#) [61062-3](#) [61082-181009](#) [636-1427](#) [638009-1](#) [641938-9](#) [641991-4](#) [644168-1](#) [647662-1](#) [65039-019ELF](#) [65781-047](#) [65817-002LF](#) [65817-015LF](#) [65863-015LF](#) [66207-023LF](#) [67016-026LF](#) [67046-001LF](#) [67095-007LF](#)