

THIS DRAWING IS UNPUBLISHED.

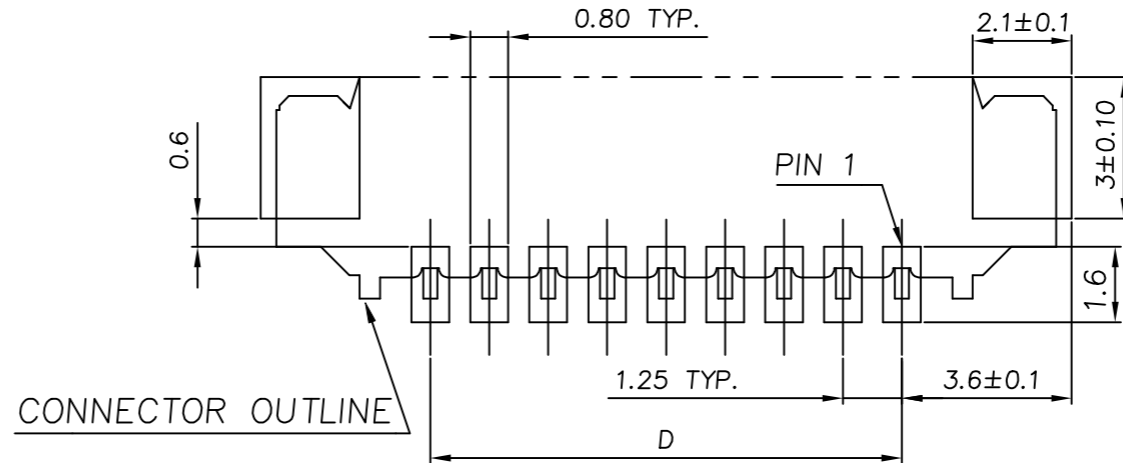
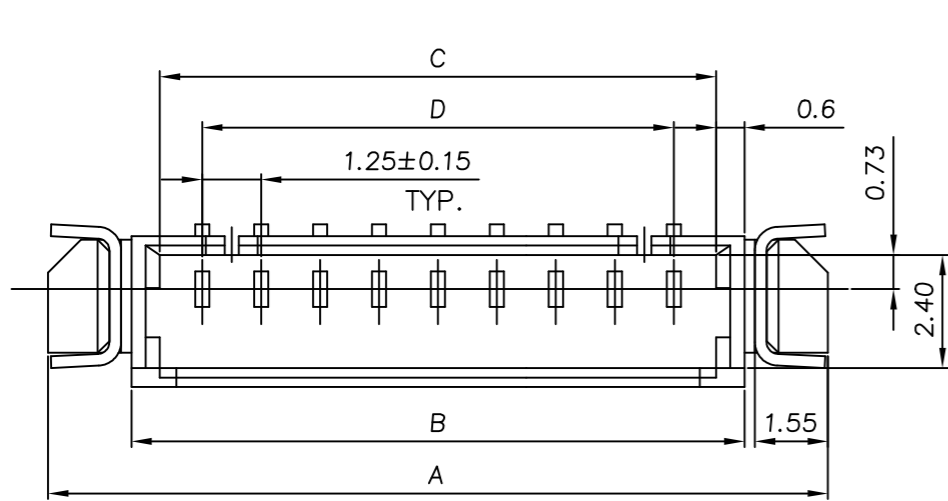
RELEASED FOR PUBLICATION

REVISIONS

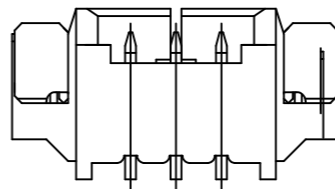
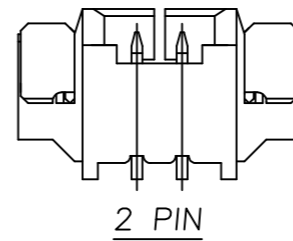
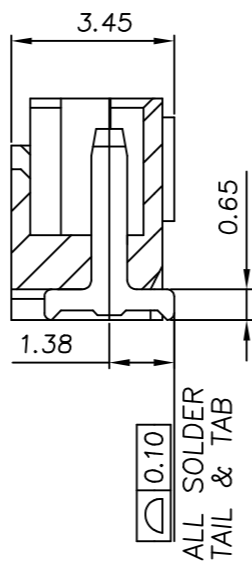
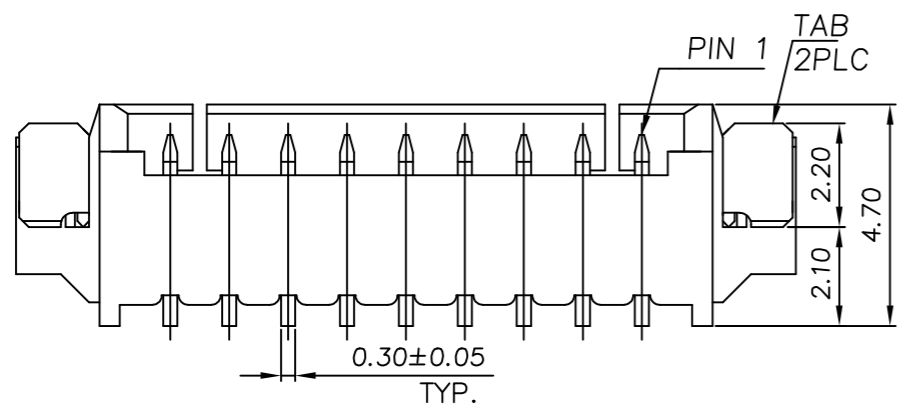
© COPYRIGHT - TE Connectivity Ltd.

ALL RIGHTS RESERVED.

P	LTR	DESCRIPTION	DATE	DWN	APVD
	A3	ECR-19-007134	27FEB2019	T.Q	W.H



RECOMMENDED PCB LAYOUT
TOLERANCE: ±0.05



MATERIAL	CONTACT PLATING	D	C	B	A	POS	CONNECTOR P/N
0.762um[30u"] MIN. GOLD	MIN. GOLD	1.25	3.05	4.25	7.79	2	5-1734261-2
		17.50	19.30	20.50	24.04	15	4-1734261-5
		16.25	18.05	19.25	22.79	14	4-1734261-4
		15.00	16.80	18.00	21.54	13	4-1734261-3
		13.75	15.55	16.75	20.29	12	4-1734261-2
		12.50	14.30	15.50	19.04	11	4-1734261-1
		11.25	13.05	14.25	17.79	10	4-1734261-0
		10.00	11.80	13.00	16.54	9	3-1734261-9
		8.75	10.55	11.75	15.29	8	3-1734261-8
		7.50	9.30	10.50	14.04	7	3-1734261-7
2.54um[100u"] MIN. MATTE-TIN	MIN. MATTE-TIN	6.25	8.05	9.25	12.79	6	3-1734261-6
		5.00	6.80	8.00	11.54	5	3-1734261-5
		3.75	5.55	6.75	10.29	4	3-1734261-4
		2.50	4.30	5.50	9.04	3	3-1734261-3
		1.25	3.05	4.25	7.79	2	3-1734261-2
		17.50	19.30	20.50	24.04	15	1-1734261-5
		16.25	18.05	19.25	22.79	14	1-1734261-4
		15.00	16.80	18.00	21.54	13	1-1734261-3
		13.75	15.55	16.75	20.29	12	1-1734261-2
		12.50	14.30	15.50	19.04	11	1-1734261-1
11.25	13.05	14.25	17.79	10	1-1734261-0		
10.00	11.80	13.00	16.54	9	1734261-9		
8.75	10.55	11.75	15.29	8	1734261-8		
7.50	9.30	10.50	14.04	7	1734261-7		
6.25	8.05	9.25	12.79	6	1734261-6		
5.00	6.80	8.00	11.54	5	1734261-5		
3.75	5.55	6.75	10.29	4	1734261-4		
2.50	4.30	5.50	9.04	3	1734261-3		
1.25	3.05	4.25	7.79	2	1734261-2		

NOTE:

- 1. MATERIAL: HOUSING: HIGH TEMP. THERMOPLASTIC, UL 94V-0, COLOR: NATURAL. CONTACTS: PHOSPHOR BRONZE. TAB: PHOSPHOR BRONZE.
- 2. FINISH: CONTACTS: (SEE TABLE) OVER 50u" MIN. NICKEL PLATED. TAB: 100u" MIN. MATTE-TIN OVER 50u" MIN. NICKEL PLATED.
- 3. NO TE LOGO AND DATE CODE ON THE PRODUCT.
- 4. LOCKING WINDOW: ON PLACE FOR 2 AND 3 CONTACTS, TWO PLACES FOR MORE THAN 3 CONTACTS.
- 5. RECOMMENDED PART NUMBER OF CABLE ASSEMBLY: HOUSING: X-440146-X CONTACT: 440147-2(GOLD PLATED)/1734193-1(TIN PLATED).
- 6. MATERIAL: HOUSING: HIGH TEMP. THERMOPLASTIC, UL 94V-0, COLOR: BLACK. CONTACTS: PHOSPHOR BRONZE. TAB: PHOSPHOR BRONZE.

THIS DRAWING IS A CONTROLLED DOCUMENT.

DIMENSIONS: mm	TOLERANCES UNLESS OTHERWISE SPECIFIED:	DWN Tommy Qian 21DEC2017	TE Connectivity Ltd.
	0 PLC ± -	CHK Wenke He 21DEC2017	
	1 PLC ± 0.38	APVD Wenke He 21DEC2017	
	2 PLC ± 0.25	NAME	
	3 PLC ± -	PRODUCT SPEC	108-57273
	4 PLC ± -	APPLICATION SPEC	501-57299
	ANGLES ± 0°30'	WEIGHT	A3 00779 C=1734261
MATERIAL SEE NOTE	FINISH SEE NOTE	CUSTOMER DRAWING	SCALE N/A SHEET 1 of 2 REV A3

4

3

2

1

THIS DRAWING IS UNPUBLISHED.

RELEASED FOR PUBLICATION

ALL RIGHTS RESERVED.

© COPYRIGHT - TE Connectivity Ltd.

REVISIONS

P	LTR	DESCRIPTION	DATE	DWN	APVD
-	-	SEE SHEET 1	-	-	-

ADHESIVE TAPE
PULL OUT DIRECTION

$\phi 13$

$\phi 330$

$W+0.40$

$W \pm 0.30$

4.00
2.00
 $\phi 1.50$

3.90

CARRIER FOR 2 TO 7 PIN

PULL OUT DIRECTION

COVER TAPE

160 MIN
TAIL PART (EMPTY)

COMPONENT SUPPLIER

230 MIN
LEADER PART (EMPTY)

160 MIN.

$W \pm 0.30$

4.00
2.00
 $\phi 1.50$

3.90

1.50
12.00
1.70

CARRIER FOR 8 TO 15PIN

NOTE: 1. CARTON DIMENSION: 340X340X250

15				
14	44.0	1000/REEL	4	4000
13				
12				
11				
10	32.0	1000/REEL	6	6000
9				
8				
7				
6	24.0	1000/REEL	7	7000
5				
4				
3	16.0	1000/REEL	10	10000
2				
NO. OF PIN	DIM W	PACKING	REELS/CARTON	PCS/REEL

THIS DRAWING IS A CONTROLLED DOCUMENT.		DWN	21DEC2017	TE Connectivity Ltd.	
		CHK	21DEC2017	NAME	
DIMENSIONS: mm		Tommy Qian Wenke He		WIRE TO BOARD MALE HEADER 1.25MM PITCH, SMT, RIGHT ANGLE	
TOLERANCES UNLESS OTHERWISE SPECIFIED:		APVD		RESTRICTED TO	
0 PLC $\pm -$		21DEC2017		-	
1 PLC ± 0.38		PRODUCT SPEC		SIZE	
2 PLC ± 0.25		108-57273		CAGE CODE	
3 PLC $\pm -$		APPLICATION SPEC		DRAWING NO	
4 PLC $\pm -$		501-57299		C=1734261	
ANGLES $\pm 0'30''$		WEIGHT		A3 00779	
MATERIAL		FINISH		SCALE	
SEE NOTE		SEE NOTE		N/A	
		CUSTOMER DRAWING		SHEET	
				2 OF 2	
				REV	
				A3	

1470-19 (1/15)

X-ON Electronics

Largest Supplier of Electrical and Electronic Components

Click to view similar products for [Headers & Wire Housings](#) category:

Click to view products by [TE Connectivity](#) manufacturer:

Other Similar products are found below :

[95000-104TRLF](#) [10135584-644402LF](#) [DF62W-EP2022PCA](#) [95000-106TRLF](#) [DF62W-2022SCA](#) [DF62W-EP2022PC](#) [2203348](#) [DF62W-2022SC](#) [1084018](#) [1029039](#) [1084017](#) [802-10-012-10-002000](#) [1112640](#) [1112639](#) [000-34000](#) [0009482033](#) [0009507031](#) [57102-S06-03LF](#) [57202-S52-04LF](#) [PCN6-15S-2.5E](#) [0039019024](#) [58102-G61-06LF](#) [582553-1](#) [0009508121](#) [0050291907](#) [018731A](#) [LY20-4P-DT1-P1E-BR](#) [02.125.8002.8](#) [60101931](#) [60598-1 \(Cut Strip\)](#) [M1625-3R/100](#) [61062-3](#) [61082-181009](#) [636-1427](#) [638009-1](#) [641938-9](#) [641991-4](#) [644168-1](#) [647662-1](#) [65039-019ELF](#) [65817-002LF](#) [65817-015LF](#) [65863-015LF](#) [66207-023LF](#) [67016-026LF](#) [67046-001LF](#) [67095-007LF](#) [68002-116](#) [68016-236H](#) [68648-049](#)