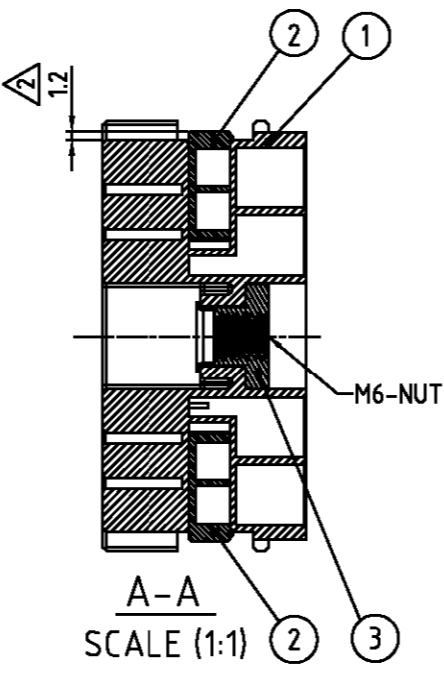
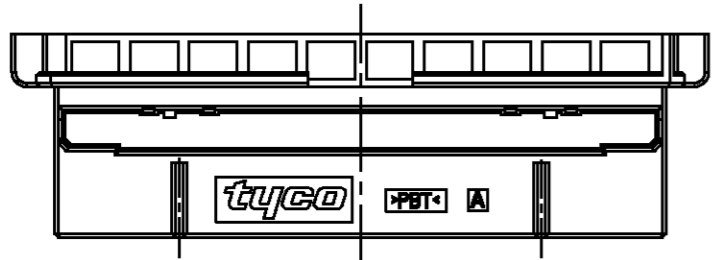
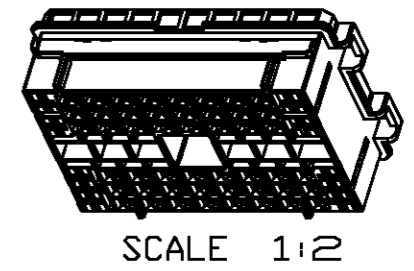


LOC	DIST	REVISIONS			
P	LTR	DESCRIPTION	DATE	DWN	APVD
DS					
	A	RELEASED	10/NOV/05	YH	JK
	A1	REVISED (ECR-06-030161)	28/MAY/07	DH	JK

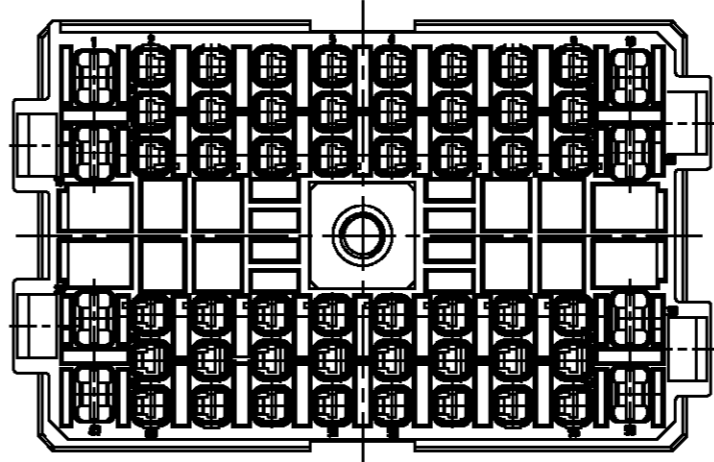
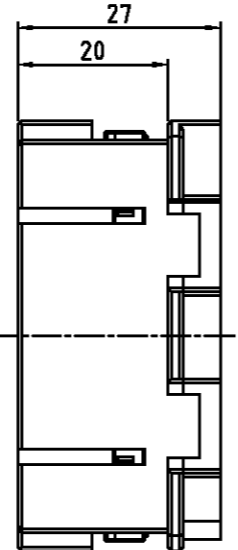
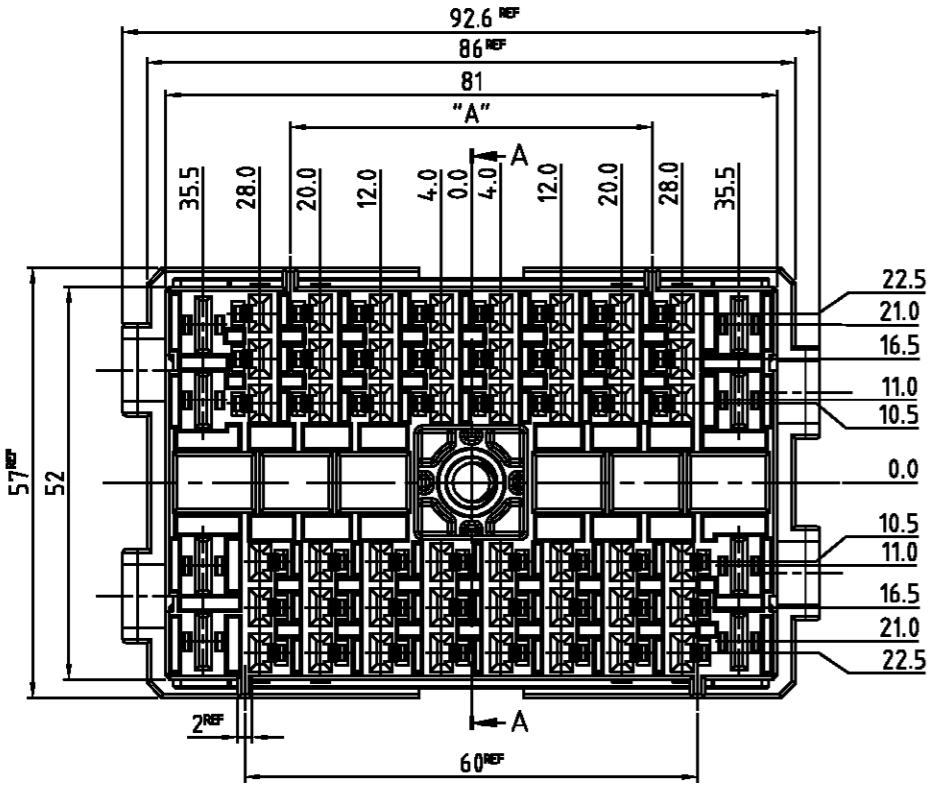


56P HYBRIDE PLUG KEY CODE.

P/N	"A"	COLOR	MATERIAL
0-1743130-2	48	BLACK	PBT
1-1743130-3	40	GRAY	PBT



- NOTE.
- GENERAL TOLERANCE IS  $\pm 0.3, \pm 3^\circ$
  - CONDITION OF DELIVERY : DBL PLATE PRE-ASSEMBLED POSITION
  - APPLIED RECEPTACLE CONTACT P/N:



	PART No.	WIRE SIZE(mm <sup>2</sup> )
MCP-E	0-1743162-1	0.3 0.85mm <sup>2</sup>
	0-1743163-1	1.25 2.0mm <sup>2</sup>
MCP 6.3	0-1241400-1	0.2 0.5mm <sup>2</sup>
	0-1241402-1	0.5 1.0mm <sup>2</sup>
	0-1241404-1	1.0 2.5mm <sup>2</sup>
	0-1241406-1	2.5 4.0mm <sup>2</sup>
	0-1241408-1	4.0 6.0mm <sup>2</sup>

- APPLICABLE COVER PART No.: 1743133, 1743588, 1743589
- MATING BOLT Torque spec 0.8-1.0 Kgf.m

QTY	NAME	COLOR	MATERIAL	Q'TY	ASSY P/N
3	M6 NUT	-	SUM24L	1	1-1743130-3
2	DBL	NATURAL	PBT	2	0-1743130-2
1	PLUG	GRAY	PBT	1	-
		BLACK	PBT	1	

THIS DRAWING IS A CONTROLLED DOCUMENT FOR TYCO ELECTRONICS CORPORATION. IT IS SUBJECT TO CHANGE AND THE CONTROLLING ENGINEERING ORGANIZATION SHOULD BE CONTACTED FOR THE LATEST REVISION.

DIMENSIONS: mm  
 TOLERANCES UNLESS OTHERWISE SPECIFIED: SEE NOTE  
 3rd ANGLE PROJECTION  
 MATERIAL: SEE TABLE  
 FINISH: SEE TABLE

DWN: DH PARK  
 CHK: YJ YOUN  
 APVD: JK SONG  
 PRODUCT SPEC: -  
 APPLICATION SPEC: -  
 WEIGHT: -

**tyco** AMP KOREA.  
 Electronics kyungsan, korea

NAME: HYBRID 56P PLUG ASS'Y (NUT TYPE)

SIZE: A3 CAGE CODE: 00779 DRAWING NO: 1743130 RESTRICTED TO: -

CUSTOMER DRAWING SCALE 1/1 SHEET 1 OF 1 REV A1

## X-ON Electronics

Largest Supplier of Electrical and Electronic Components

*Click to view similar products for [Automotive Connectors](#) category:*

*Click to view products by [TE Connectivity](#) manufacturer:*

Other Similar products are found below :

[003-018-000](#) [60403001](#) [60993906-B](#) [M902-2131](#) [M902-2161](#) [M902-2344](#) [72.330.1035.1](#) [73.353.4028.0](#) [F119300-B](#) [F166900](#) [F258300-B](#)  
[F358300-B](#) [F407400](#) [F444110](#) [F487000](#) [F509500B-B](#) [827153-1](#) [8N1515-32-24P](#) [9-1326729-8](#) [925474-1](#) [928905-1](#) [964562-4](#) [968782-1](#)  
[GT17SA-8DS-HU](#) [98891-1012](#) [98947-1016](#) [12004147](#) [12004475-L](#) [12010290](#) [12010309-B](#) [12015454](#) [12020219-B](#) [12041318-B](#) [12052225-](#)  
[L](#) [12052466](#) [12064869](#) [12004327-B](#) [12015308](#) [12015384](#) [12015909](#) [1-21030-1](#) [12041254](#) [12041318](#) [12047946-B](#) [12047957](#) [12047957-L](#)  
[12059473](#) [12066261](#) [12110546](#) [12110546-B](#)