

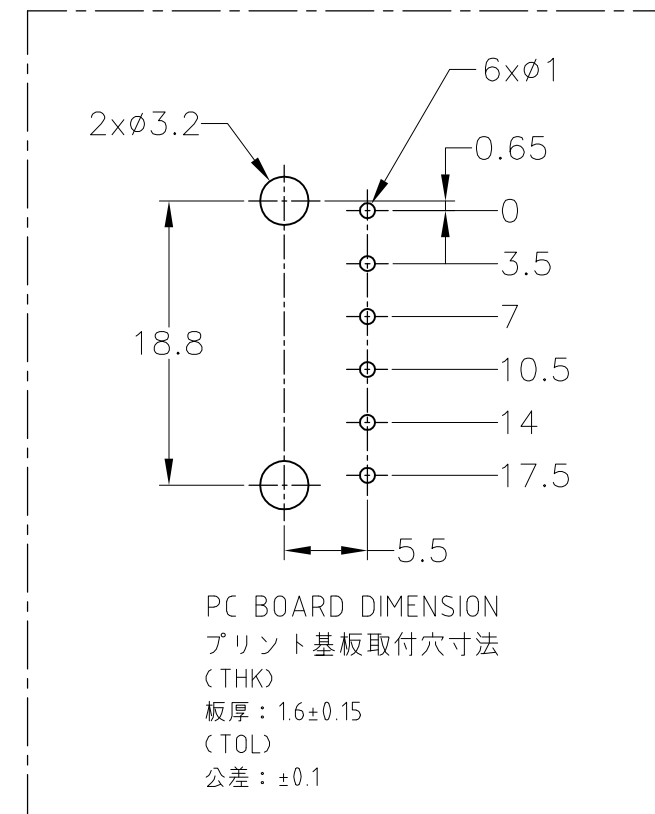
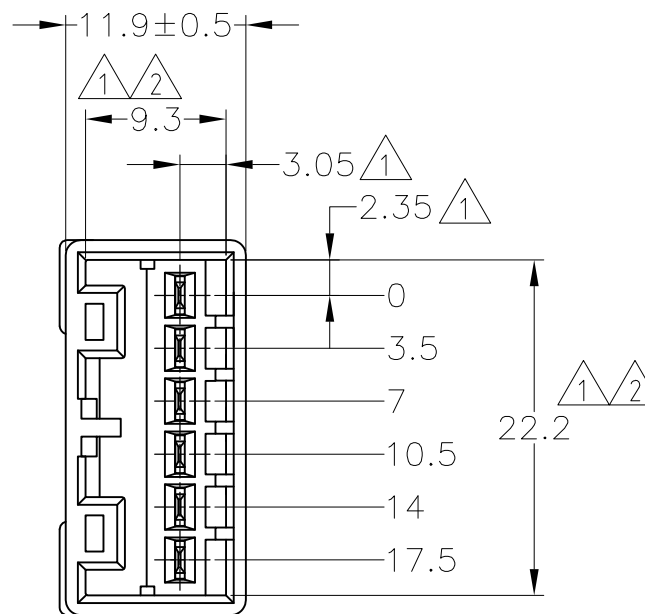
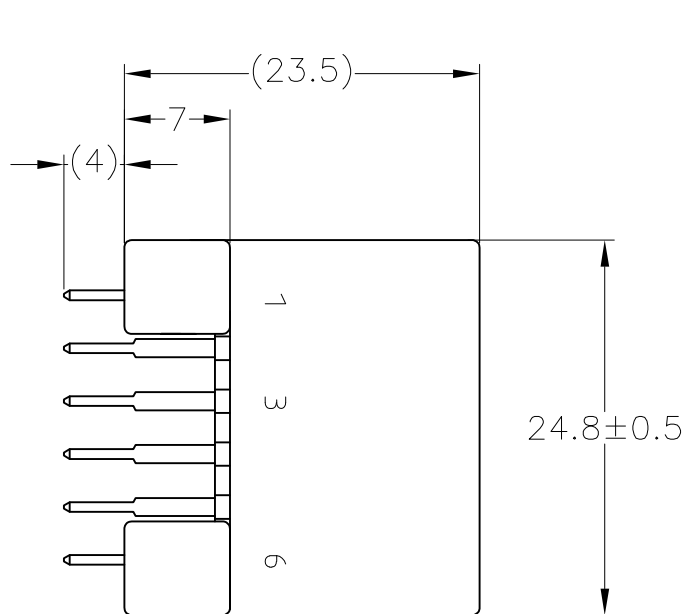
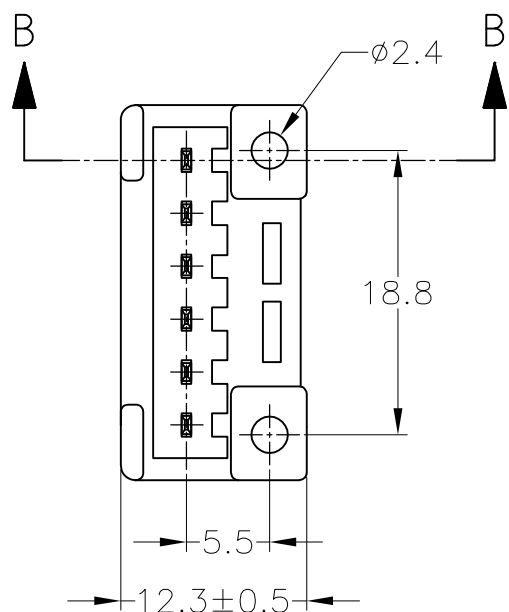
THIS DRAWING IS UNPUBLISHED.

RELEASED FOR PUBLICATION

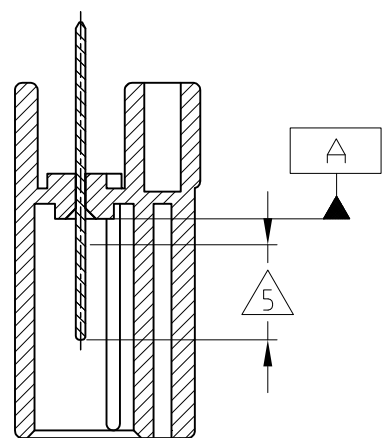
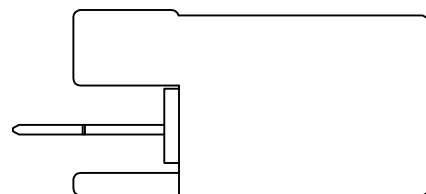
© COPYRIGHT - By Tyco Electronics JAPAN G.K.

ALL RIGHTS RESERVED.

LOC	DIST	REVISIONS					
J	-	P	LTR	DESCRIPTION	DATE	DWN	APVD
			E4	REVISED	ECR-15-005789	15APR15	KF RK



- ① TO BE MEASURED BETWEEN [A] AND 2
- ② TO BE MATED WITH PLUG HOUSING SMOOTHLY
- 3. TO BE USE M3 TAPPING SCREW JIS B1115 OR 1122 (TYPE 2 OR 4) BEFORE SOLDER (TIGHTENING TORQUE; 0.8N-m MAX.)
- 4. APPLIED PLUG HOUSING PART NUMBER; 174923
- ⑤ SELECTIVE GOLD



B-B

- ① [A] 面から 2mm の範囲で測定
- ② 相手ハウジングと所定の機能を満たして嵌合できること
- 3. プリント基板への取付けは JIS B1115 又は 1122, M3×6 ナベ (2種又は4種) のタッピングネジで締め付けた後ハンダ付けする (締付トルク; 0.8N-m 以下)
- 4. 嵌合相手ハウジング型番; 174923
- ⑤ 部分金めっき

OBSOLETE	SELECTIVE-TIN (MATTE)	SELECTIVE GOLD × 6	NATURAL 自然色	2-5174954-1
	SELECTIVE-TIN	PRE-TIN × 6	NATURAL 自然色	3-174954-1
	TIN-LEAD	SELECTIVE GOLD × 6	NATURAL 自然色	2-174954-1
		PRE-TIN × 6	BLACK 黒色	1-174954-2
		PRE-TIN × 6	NATURAL 自然色	1-174954-1
	SOLDERING SIDE 半田付け部	CONTACT SIDE 接触部側	COLOR 色	PART NUMBER 製品型番
	CONTACT FINISH コンタクト仕上			

TOLERANCE UNLESS OTHERWISE SPECIFIED: 一般公差	
0 < x ≤ 10	: ±0.2
10 < x ≤ 30	: ±0.25
30 < x ≤ 100	: ±0.3
ANGLE 角度	: ±3°

THIS DRAWING IS A CONTROLLED DOCUMENT.	
DIMENSIONS: mm	TOLERANCES UNLESS OTHERWISE SPECIFIED:
	0 PLC ± -
	1 PLC ± -
	2 PLC ± -
	3 PLC ± -
	4 PLC ± -
	ANGLES ± -
MATERIAL	FINISH
HOUSING: PBT	
TAB: BRASS	

DWN	17APR01
A. YAMAGUCHI	
CHK	17APR01
M. TSUKAKOSHI	
APVD	17APR01
M. TSUKAKOSHI	
PRODUCT SPEC	108-5216
APPLICATION SPEC	114-5082
WEIGHT	-

STE TE Connectivity			
070 SERIES MULTI LOCK 6POSITION CAP HOUSING (W-B V-TYPE) ASSEMBLY			
SIZE	CAGE CODE	DRAWING NO	RESTRICTED TO
A3	00779	C-174954	-
CUSTOMER DRAWING		SCALE	SHEET
		2:1	1 OF 1
		REV	E4

X-ON Electronics

Largest Supplier of Electrical and Electronic Components

Click to view similar products for [Automotive Connectors](#) category:

Click to view products by [TE Connectivity](#) manufacturer:

Other Similar products are found below :

[003-018-000](#) [60403001](#) [60993906-B](#) [M902-2131](#) [M902-2161](#) [72.330.1035.1](#) [73.353.4028.0](#) [F119300-B](#) [F166900](#) [F258300-B](#) [F358300-B](#)
[F407400](#) [F444110](#) [F487000](#) [F509500B-B](#) [827153-1](#) [8N1515-32-24P](#) [9-1326729-8](#) [925474-1](#) [928905-1](#) [964562-4](#) [968782-1](#) [GT17SA-8DS-](#)
[HU](#) [98891-1012](#) [98947-1016](#) [12004147](#) [12004475-L](#) [12010290](#) [12010309-B](#) [12015454](#) [12020219-B](#) [12020308](#) [12041318-B](#) [12052225-L](#)
[12052466](#) [12059125](#) [12064869](#) [12004327-B](#) [12010503-B](#) [12015308](#) [12015384](#) [12015909](#) [1-21030-1](#) [12041254](#) [12041318](#) [12047946-B](#)
[12047957](#) [12047957-L](#) [12059473](#) [12066261](#)