

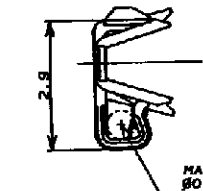
NUMBER C-175102



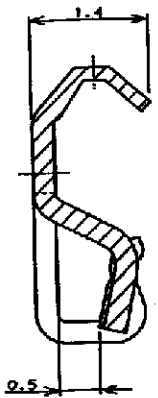
METRIC

DIMENSIONS IN MILLIMETERS. DO NOT SCALE PRINT.

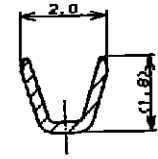
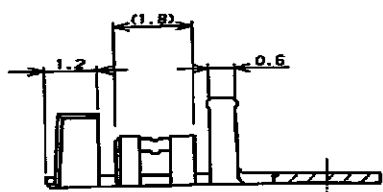
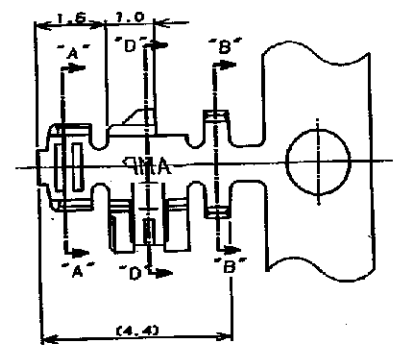
PRINTED BY



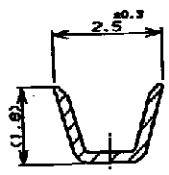
MATE 0.5 DIA POST  
0.6mmストと嵌合



SECT "D"-"D"  
SCALE 20:1



SECT "A"-"A"



SECT "B"-"B"

- 注:
1. 使用ハウジングは型番 175778
  2. 製品規格 : 108-5297
  3. 取付適用規格 : 114-5140

- NOTES:
1. USE HOUSING ; P/N 175778
  2. PRODUCT SPEC ; 108-5297
  3. APPLICATION SPEC ; 114-5140

OBsolete	NICKEL PLATED PHOSPHOR BRONZE ONLY CONTACT AREA GOLD PLT. 0.2μ 銅青銅にニッケル下地、接触部に金めっき0.2μ	1-175102-2
1-175161-1	PRE TINNED PHOSPHOR BRONZE (0.25μ) 鍍めつき浴鍍青銅 (0.25μ)	1-175102-1
L/P CONTACT L/P端子	MATERIAL & FINISH 材質	PART NO. 型番

Copyright ©19 年		Copyright ©19 年		Tyco Electronics		Tyco Electronics Corporation Shanghai, P.R.China.200233	
H1	REVISED ECR-09-003101	D.S.	S.Y.	7/11	09		
H	REVISED F300-0326-03	Z.F.					
G1	CORRECTED F300-0132-03	T.F.S.K.		3/4	09	WIRE RANGE 0.12 -0.35mm <sup>2</sup> (AWG26-22)	
G	REVISED J-1520	S.K.S.K.		07/17	05	INSULATION DIA 1.0-1.5 mm	
F	REVISED J-0431	T.F.S.K.		02/28	04	FINISH SEE TABLE 参照表	
E	REVISED J-0288	T.F.S.K.		07/17	05	GENERAL TOLERANCE B J	
D	REDRAMN J-12413	T.N.S.K.		4/3	06	SIZE LOC NUMBER C-175102	
LTR	REVISION RECORD	DR	CHK	DATE	APP	SCALE 10-1	
						REV. H1 SHEET 1 OF 2	
						CUSTOMER DRAWING	

NUMBER C-175102

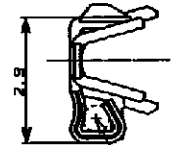


METRIC

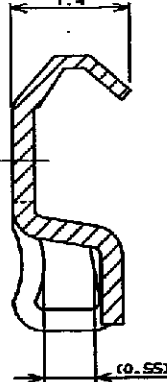
DIMENSIONS IN MILLIMETERS. DO NOT SCALE PRINT

PRINT DATE

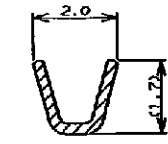
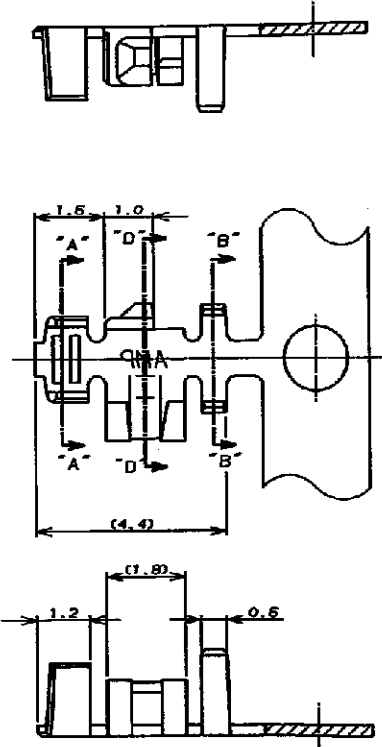
REV. 10/82



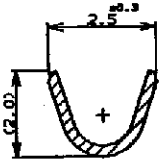
MATE 0.5 DIA POST  
0.6mmストと嵌合



SECT "D" - "D"  
(SCALE 20-1)



SECT "A" - "A"



SECT "B" - "B"

- 注:
1. 使用ハウジングは型番 175778
  2. 製品規格: 108-5297
  3. 取付適用規格: 114-5140

- NOTES:
1. USE HOUSING ; P/N 175778
  2. PRODUCT SPEC ; 108-5297
  3. APPLICATION SPEC ; 114-5140

INACTIVE		NICKEL PLATED PHOSPHOR BRONZE (ONLY CONTACT AREA GOLD PLY: 0.2μ)	175102-2
	175161-1	PRE TINNED PHOSPHOR BRONZE (0.25μ)	175102-1
	L/P CONTACT	MATERIAL & FINISH	PART NO.

Copyright ©1982 by Tyco Electronics Corporation, LTD. ALL RIGHTS RESERVED. Tyco Electronics Corporation Shanghai, P.R.China, 200033

LTR	REVISION RECORD	DR	CHK	DATE

WIRE RANGE 0.12 -0.35mm <sup>2</sup> (AWG26-32)	INSULATION DIA 1.0-1.5mm	NAME 圧着タイプ リセコンタクト CRIMP TYPE RECEPTACLE CONTACT (AMP CT CONNECTOR 2mm PITCH)
MATERIAL SEE TABLE	FINISH SEE TABLE	GENERAL TOLERANCE
DR. T. NAKAMURA 4/27/80	DE. T. NAKAMURA	SIZE LOC NUMBER
CHK. S. KIKUCHI 4/27/80	APP. <i>S. Kikuchi</i>	B J C-175102
		SCALE 10-1
		REV. H1
		SHEET 2 OF 2

CUSTOMER DRAWING

## X-ON Electronics

Largest Supplier of Electrical and Electronic Components

*Click to view similar products for [Headers & Wire Housings](#) category:*

*Click to view products by [TE Connectivity](#) manufacturer:*

Other Similar products are found below :

[892-18-020-10-001101](#) [58102-G61-06LF](#) [582553-1](#) [0009485154](#) [009176003701906](#) [0050291907](#) [LY20-4P-DT1-P1E-BR](#) [02.125.8002.8](#)  
[609-3404](#) [61062-3](#) [61082-181009](#) [622-3653LF](#) [63453-116](#) [636-1030](#) [636-1427](#) [636-3427](#) [636-4007](#) [641938-9](#) [641991-4](#) [644827-2](#) [65817-](#)  
[010LF](#) [65817-015LF](#) [65863-015LF](#) [66207-023LF](#) [67095-007LF](#) [67601157](#) [68645-018](#) [68648-049](#) [70.362.1628.0](#) [70-4210](#) [70-4226B](#) [70-](#)  
[4853B](#) [707-5020](#) [707-5028](#) [71.350.2428.0](#) [71918-208LF](#) [71961-016LF](#) [733-134](#) [733-162](#) [754199-000](#) [760-3052](#) [79531-3000](#) [FCN-](#)  
[360C032-B](#) [FCN-367T-T012/H](#) [FCN-723D010/2](#) [80.063.4001.1](#) [800-90-010-10-002000](#) [801-43-002-10-013000](#) [801-43-006-10-002000](#)  
[801-93-011-10-001000](#)