

1-175161-1 : 本図
1-175161-1 : AS SHOWN

NUMBER C-175161
METRIC
3rd ANGLE PROJECTION

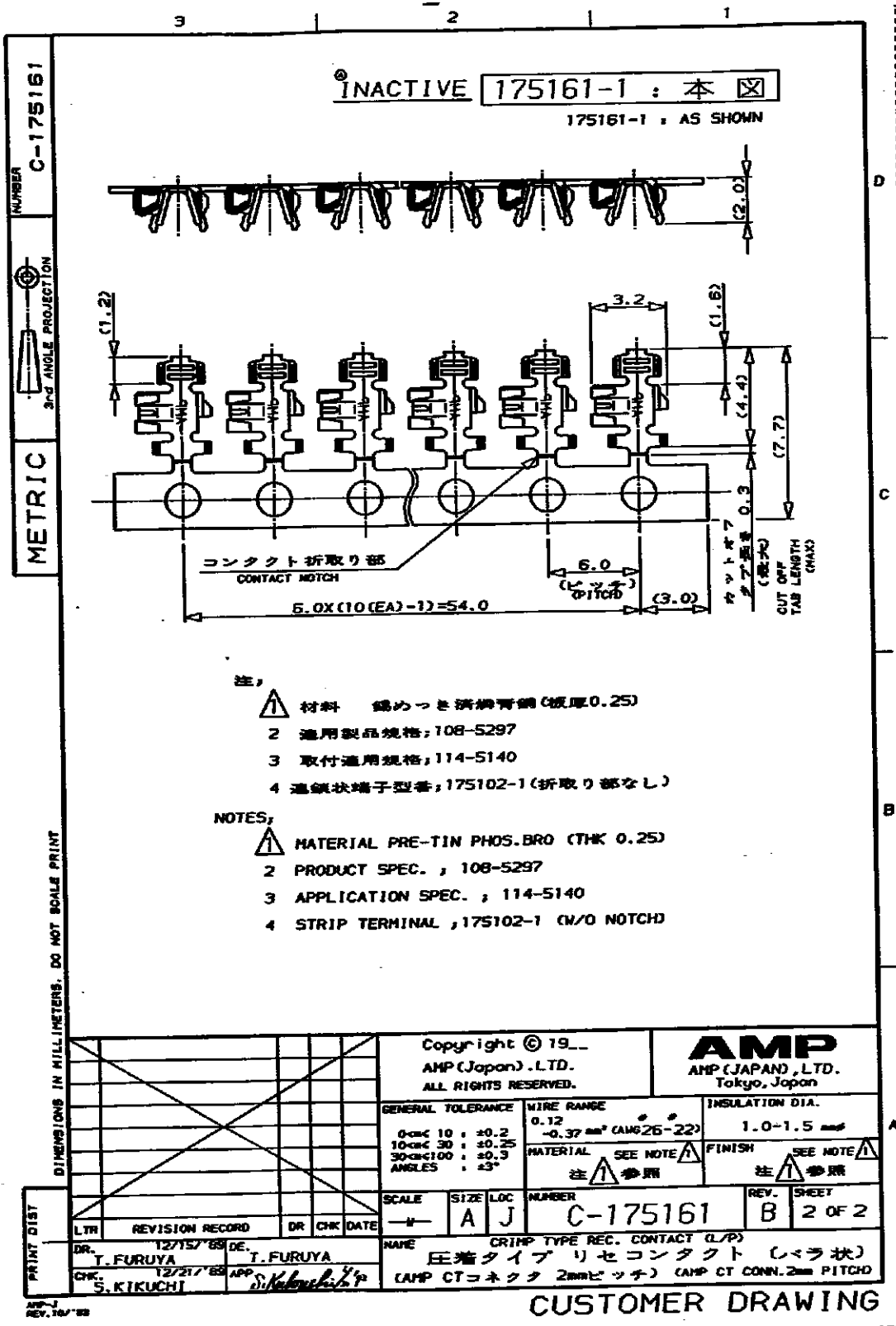
- 注;
- 1 材料 錫めっき済磷青銅 (板厚0.25)
 - 2 通用製品規格, 108-5297
 - 3 取付通用規格, 114-5140
 - 4 温度端子型番, 1-175102-1 (折取り部なし)

- NOTES,
- 1 MATERIAL PRE-TIN PHOS.BRO (THK 0.25)
 - 2 PRODUCT SPEC. , 108-5297
 - 3 APPLICATION SPEC. , 114-5140
 - 4 STRIP TERMINAL , 1-175102-1 (W/O NOTCH)

DIMENSIONS IN MILLIMETERS. DO NOT SCALE PRINT

		Copyright © 19__		AMP AMP (JAPAN) LTD. Tokyo, Japan	
		AMP (Japan) LTD. ALL RIGHTS RESERVED.			
		GENERAL TOLERANCE	WIRE RANGE	INSULATION DIA.	
		0-100 : ±0.2	0.12	1.0-1.5 mmf	
		10-30 : ±0.25	-0.37 mm ² (AWG 26-22)	MATERIAL SEE NOTE 1	
		30-100 : ±0.3	注 1 参照	FINISH SEE NOTE 2	
		ANGLES : ±3°			
		SCALE	SIZE LOC	NUMBER	REV. SHEET
		→	A J	C-175161	B 1 OF 2
PRINT DIST		DR. T. FURUYA		NAME CRIMP TYPE REC. CONTACT (L/P)	
LTR		CHK. S. KIKUCHI		圧着タイプ リセコンタクト (バラ状)	
REV. 10/80		APP. S. Kikuchi		(AMP CTコネクタ 2mmピッチ) (AMP CT CONN. 2mm PITCH)	

CUSTOMER DRAWING



- 注,
- 1 材料 錫めっき析出青銅 (板厚0.25)
 - 2 適用製品規格; 108-5297
 - 3 取付適用規格; 114-5140
 - 4 通気状端子型番; 175102-1 (折取り部なし)

- NOTES,
- 1 MATERIAL PRE-TIN PHOS.BRO (THK 0.25)
 - 2 PRODUCT SPEC. ; 108-5297
 - 3 APPLICATION SPEC. ; 114-5140
 - 4 STRIP TERMINAL ; 175102-1 (W/O NOTCH)

<table border="1"> <tr> <td>LTR</td> <td>REVISION RECORD</td> <td>DR</td> <td>CHK</td> <td>DATE</td> </tr> <tr> <td>DR.</td> <td>12/15/68</td> <td>DE.</td> <td>T. FURUYA</td> <td></td> </tr> <tr> <td>CHK.</td> <td>12/21/68</td> <td>APP.</td> <td>S. KIKUCHI</td> <td></td> </tr> </table>		LTR	REVISION RECORD	DR	CHK	DATE	DR.	12/15/68	DE.	T. FURUYA		CHK.	12/21/68	APP.	S. KIKUCHI		Copyright © 19__ AMP (Japan) .LTD. ALL RIGHTS RESERVED.		AMP AMP (JAPAN) ,LTD. Tokyo, Japan	
		LTR	REVISION RECORD	DR	CHK	DATE														
DR.	12/15/68	DE.	T. FURUYA																	
CHK.	12/21/68	APP.	S. KIKUCHI																	
GENERAL TOLERANCE 0mm 10 : ± 0.2 10mm 30 : ± 0.25 30mm 100 : ± 0.3 ANGLES : $\pm 3^\circ$		WIRE RANGE 0.12 -0.37 mm^2 (AWG26-22)		INSULATION DIA. 1.0-1.5 mm																
SCALE 1:1		SIZE LOC NUMBER A J C-175161		REV. SHEET B 2 OF 2																
NAME CRIMP TYPE REC. CONTACT (L/P) 圧着タイプリセコンタクト (レラ状) (AMP CTコネクタ 2mmピッチ) (AMP CT CONN. 2mm PITCH)																				

CUSTOMER DRAWING

X-ON Electronics

Largest Supplier of Electrical and Electronic Components

Click to view similar products for [Headers & Wire Housings](#) category:

Click to view products by [TE Connectivity](#) manufacturer:

Other Similar products are found below :

[892-18-020-10-001101](#) [58102-G61-06LF](#) [582553-1](#) [0009485154](#) [009176003701906](#) [0050291907](#) [LY20-4P-DT1-P1E-BR](#) [02.125.8002.8](#)
[609-3404](#) [61062-3](#) [61082-181009](#) [622-3653LF](#) [63453-116](#) [636-1030](#) [636-1427](#) [636-3427](#) [636-4007](#) [641938-9](#) [641991-4](#) [644827-2](#) [65817-](#)
[010LF](#) [65817-015LF](#) [65863-015LF](#) [66207-023LF](#) [67095-007LF](#) [67601157](#) [68645-018](#) [68648-049](#) [70.362.1628.0](#) [70-4210](#) [70-4226B](#) [70-](#)
[4853B](#) [707-5020](#) [707-5028](#) [71.350.2428.0](#) [71918-208LF](#) [71961-016LF](#) [733-134](#) [733-162](#) [754199-000](#) [760-3052](#) [79531-3000](#) [FCN-](#)
[360C032-B](#) [FCN-367T-T012/H](#) [FCN-723D010/2](#) [80.063.4001.1](#) [800-90-010-10-002000](#) [801-43-002-10-013000](#) [801-43-006-10-002000](#)
[801-93-011-10-001000](#)