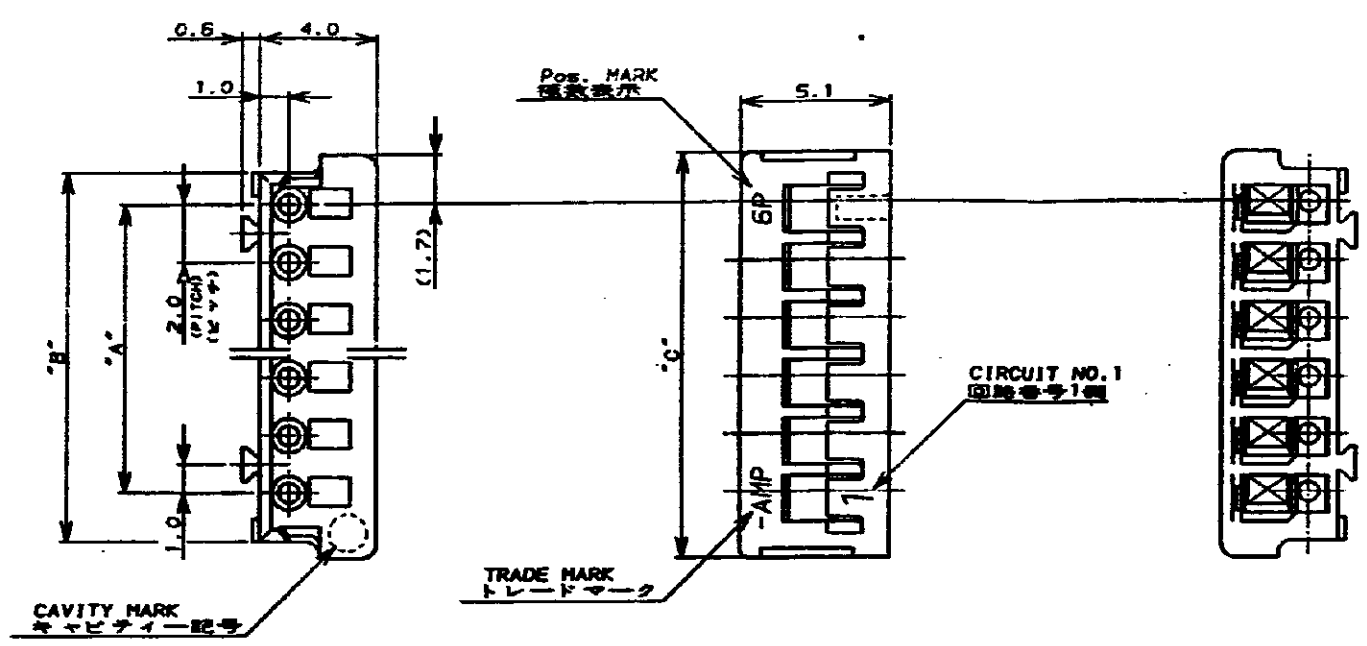


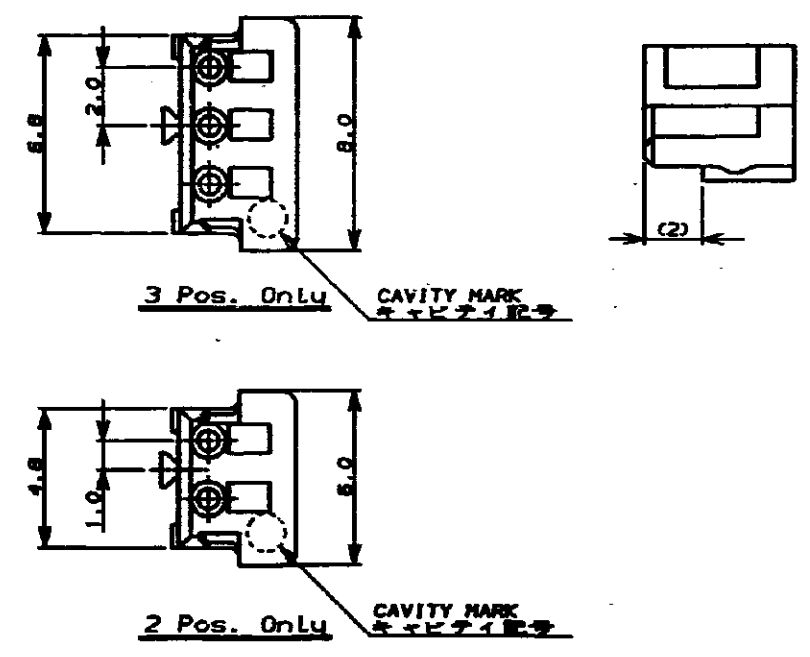
NUMBER C-175778
METRIC
3-1/2 ANGLE PROJECTION



- 注:
 1. 材料: 66ナイロン (UL94V-0)
 2. 適用製品規格: 108-5297
 3. 取付適用規格: 114-5140

- NOTES:
 1. MATERIAL: 66 NYLON (UL94V-0)
 2. PRODUCT SPEC.: 108-5297
 3. APPLICATION SPEC.: 114-5140

IMP 27.91



	7-175778-5	5-175778-5	3-175778-5	1-175778-5	15	28.0	30.8	32.0
	7- 4	5- 4	3- 4	1- 4	14	26.0	28.8	30.0
	7- 3	5- 3	3- 3	1- 3	13	24.0	26.8	28.0
	7- 2	5- 2	3- 2	1- 2	12	22.0	24.8	26.0
	7- 1	5- 1	3- 1	1- 1	11	20.0	22.8	24.0
	7- 0	5- 0	3- 0	1- 0	10	18.0	20.8	22.0
	6- 9	4- 9	2- 9		9	16.0	18.8	20.0
	6- 8	4- 8	2- 8		8	14.0	16.8	18.0
	6- 7	4- 7	2- 7		7	12.0	14.8	16.0
	6- 6	4- 6	2- 6		6	10.0	12.8	14.0
	6- 5	4- 5	2- 5		5	8.0	10.8	12.0
	6- 4	4- 4	2- 4		4	6.0	8.8	10.0
	6- 3	4- 3	2- 3		3	4.0	6.8	8.0
	6-175778-2	4-175778-2	2-175778-2	175778-2	2	2.0	4.8	6.0
	BLACK	YELLOW	BLUE	NATURAL	Pos.	A	B	C
					値数			

PRIMARY DIMS
DIMENSIONS IN MILLIMETERS. DO NOT SCALE PRINT

STE TE Connectivity

NAME 圧着タイプ リセハウジング
CRIMP TYPE RECEPTACLE HOUSING
 (AMP CT CONNECTOR 2mm PITCH)

WIRE RANGE: 0.5 - 1.0mm (AWG 30 - 18)
 INSULATION DIA: 0.5 - 1.0mm
 MATERIAL NOTE: 66 NYLON
 FINISH: 30um
 GENERAL TOLERANCE: 0.1mm
 SIZE LOC NUMBER: A3 J C-175778
 SCALE: 5-1 REV. D2 SHEET 1 OF 1

D2	ECO-11-005294	RK	DR.	T. NAKAMURA	4/6 '80 DE.
LTR	REVISION RECORD	DR	CHK	S. KIKUCHI	4/8 '80 APP.

CUSTOMER DRAWING

X-ON Electronics

Largest Supplier of Electrical and Electronic Components

Click to view similar products for [Headers & Wire Housings](#) category:

Click to view products by [TE Connectivity](#) manufacturer:

Other Similar products are found below :

[892-18-020-10-001101](#) [58102-G61-06LF](#) [582553-1](#) [0009485154](#) [009176003701906](#) [0050291907](#) [LY20-4P-DT1-P1E-BR](#) [02.125.8002.8](#)
[609-3404](#) [61062-3](#) [61082-181009](#) [622-3653LF](#) [63453-116](#) [636-1030](#) [636-1427](#) [636-3427](#) [636-4007](#) [641938-9](#) [641991-4](#) [644827-2](#) [65817-](#)
[010LF](#) [65817-015LF](#) [65863-015LF](#) [66207-023LF](#) [67095-007LF](#) [67601157](#) [68645-018](#) [68648-049](#) [70.362.1628.0](#) [70-4210](#) [70-4226B](#) [70-](#)
[4853B](#) [707-5020](#) [707-5028](#) [71.350.2428.0](#) [71918-208LF](#) [71961-016LF](#) [733-134](#) [733-162](#) [754199-000](#) [760-3052](#) [787-8014-00](#) [79531-3000](#)
[FCN-360C032-B](#) [FCN-367T-T012/H](#) [FCN-723D010/2](#) [80.063.4001.1](#) [800-90-001-10-001000](#) [800-90-010-10-002000](#) [801-43-002-10-013000](#)