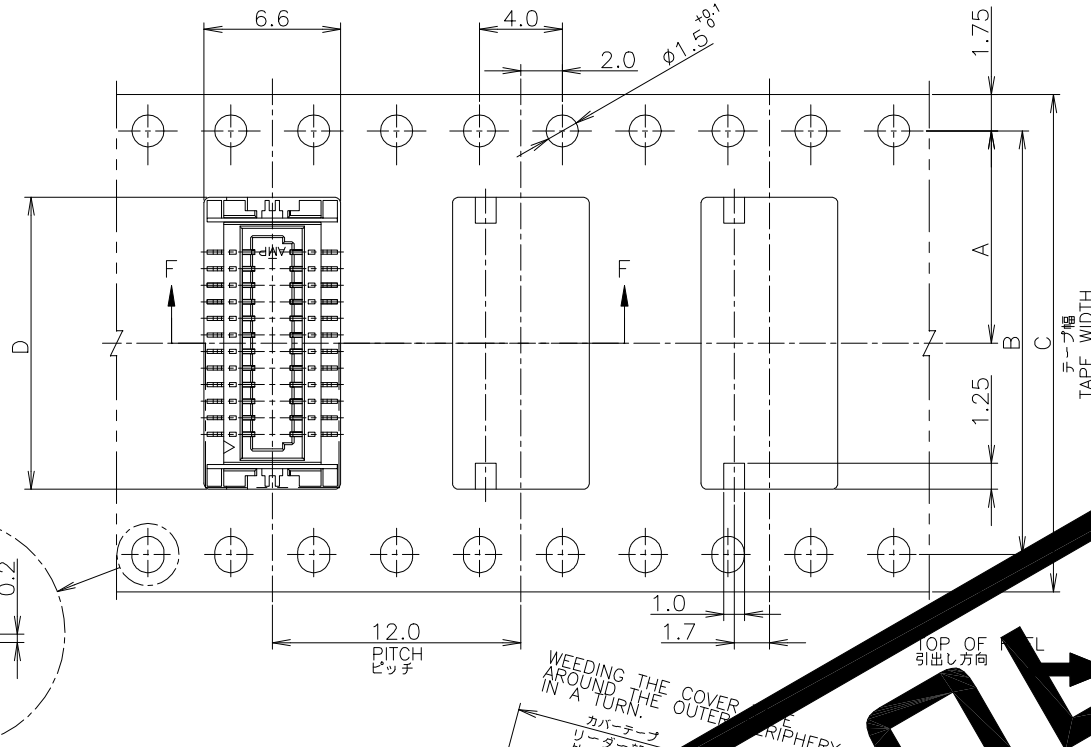
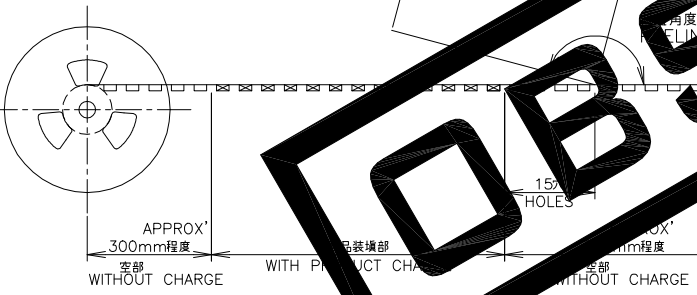
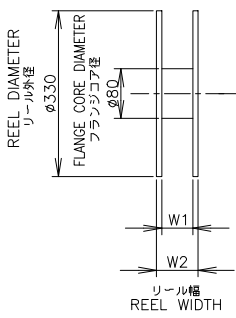
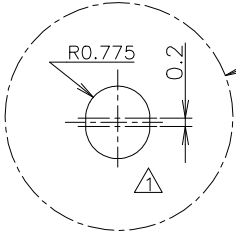


REVISIONS				
P	LTR	DESCRIPTION	DATE	APVD
	H4	REVISED PER ECR-19-016990	05NOV2019	AL HL



△ 指示穴は40極品以上に適用。  
 △ THESE HOLES ARE APPLIED TO 40 POS OR MORE.



OBSOLETE

OBSOLETE	49.5	45.5	0.38	24.5	44	40.4	20.2	1500	50	5-179396-0
OBSOLETE	37.5	33.5	↑	20.5	32	28.4	14.2	↑	40	4-↑-0
OBSOLETE	↑	↑	↑	16.5	↑	↑	↑	↑	30	3-↑-0
OBSOLETE	29.5	25.5	↑	14.1	24	↑	11.5	↑	24	2-↑-4
OBSOLETE	↑	↑	↑	10.9	↑	↑	↑	↑	16	1-↑-6
OBSOLETE	21.5	17.5	0.38	10.1	↑	↑	↑	↑	14	1-↑-4
	22.4	16.4	0.4	9.3	16	↑	7.5	1500	12	1-179396-2

INSTRUCTION SHEET	DIMENSIONS					数量	極数	リール巻
取扱説明書	W <sub>2</sub>	W <sub>1</sub>	E	D	C	B	A	コネクタ仕様
411-5654								TAPING P/N

THIS DRAWING IS A CONTROLLED DOCUMENT.

DIMENSIONS: 単位: 耗 mm

TOLERANCES UNLESS OTHERWISE SPECIFIED: 一般公差

0 PLC	± 0.2
1 PLC	± 0.2
2 PLC	± 0.2
3 PLC	± 0.2
4 PLC	± 0.2
ANGLES	± 3'

MATERIAL 材料

FINISH 仕上

DWN K.ASAKAWA 24FEB94

CHK S.KUBOUCHI

APVD S.KUBOUCHI 01NOV96

PRODUCT SPEC 製品規格

APPLICATION SPEC 取付適用規格

WEIGHT

CUSTOMER DRAWING

SCALE 尺度 4:1

SHEET 1 OF 2

REV H4

TE Connectivity Ltd.

PLUG ASSEMBLY WITH BOSS

0.8mm PITCH BOARD TO BOARD CONNECTOR

MATING HEIGHT 3.0MM

SIZE A3

CAGE CODE 00779

DRAWING NO. 108-5424

SCALE 1:1

REV H4

THIS DRAWING IS UNPUBLISHED.

RELEASED FOR PUBLICATION

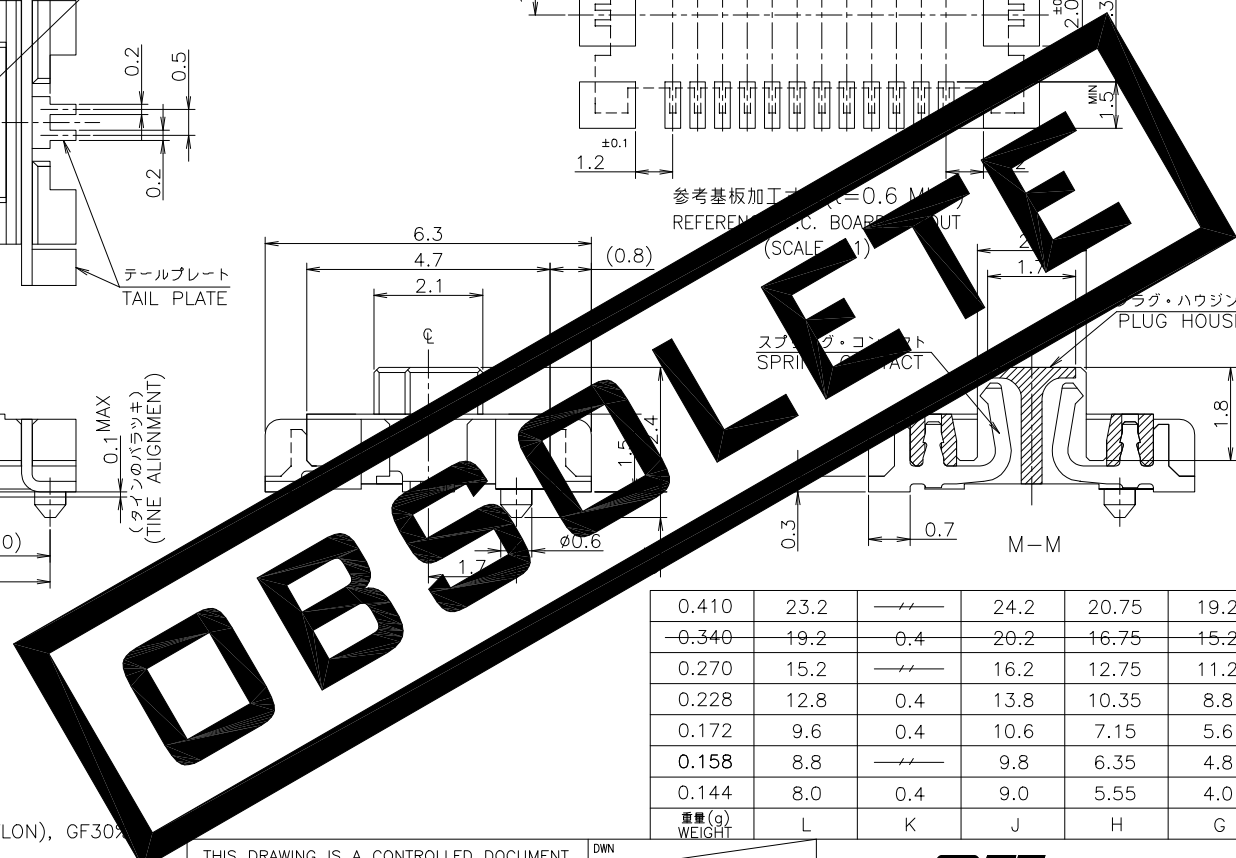
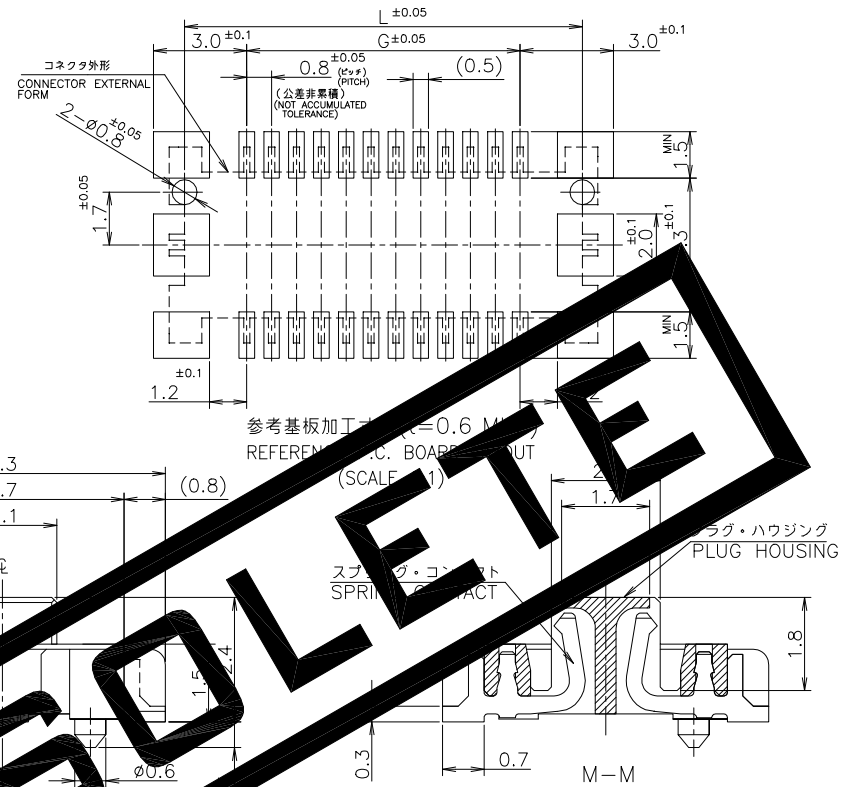
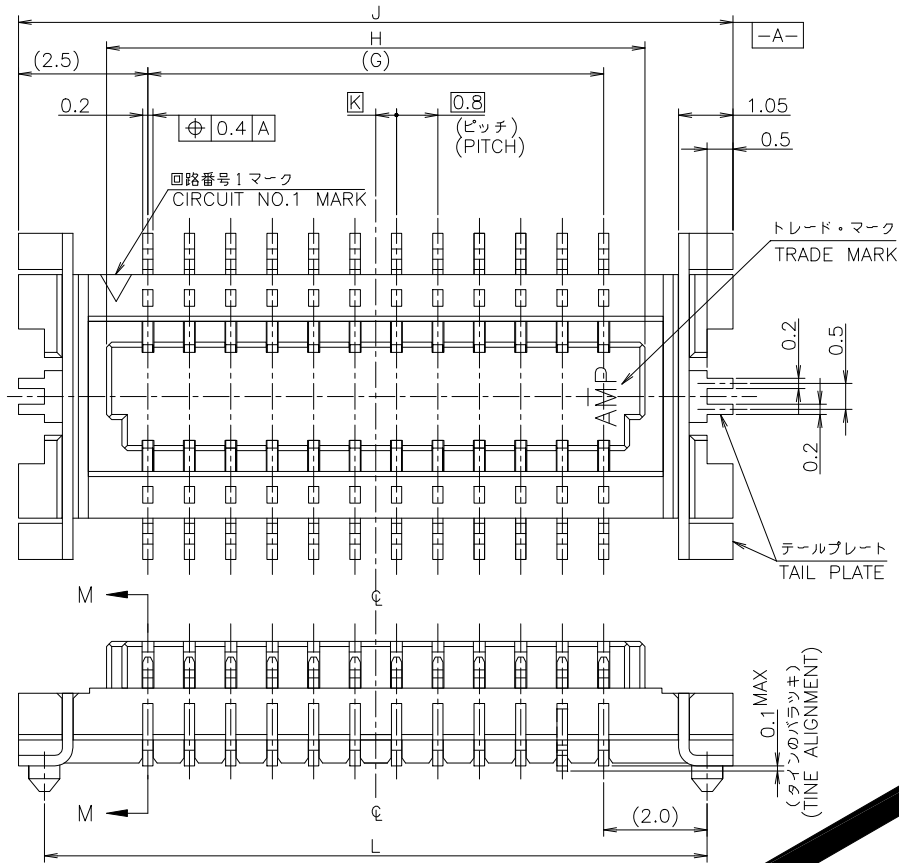
FEB. 1994.

© COPYRIGHT 1994 By -

ALL RIGHTS RESERVED.

REVISIONS

P	LTR	変更 DESCRIPTION	DATE	DWN	APVD
-	-	SEE SHEET 1	-	-	-



△ 材料: ハウジング - 6T NYLON (高耐熱性ナイロン)  
 ガラス30%, 色: ベージュ  
 コンタクト - 燐青銅・錫めっき(0.2t)  
 テールプレート - 燐青銅・錫めっき(0.2t)

△ MATERIAL: HOUSING - 6T NYLON (HIGH HEAT-RESISTED NYLON), GF30%  
 COLOR: BEIGE.  
 CONTACT - POST-TIN/PHOS-BROZ(0.2t)  
 TAIL PLATE - POST-TIN/PHOS-BROZ(0.2t)

0.410	23.2	---	24.2	20.75	19.2	50
-0.340	19.2	0.4	20.2	16.75	15.2	40
0.270	15.2	---	16.2	12.75	11.2	30
0.228	12.8	0.4	13.8	10.35	8.8	24
0.172	9.6	0.4	10.6	7.15	5.6	16
0.158	8.8	---	9.8	6.35	4.8	14
0.144	8.0	0.4	9.0	5.55	4.0	12
重量(g) WEIGHT	L	K	J	H	G	極数 POS

THIS DRAWING IS A CONTROLLED DOCUMENT.

DIMENSIONS: 単位: 耗 mm	TOLERANCES UNLESS OTHERWISE SPECIFIED: 一般公差
	0 PLC ± 0.2 1 PLC ± 0.2 2 PLC ± 0.2 3 PLC ± 0.2 4 PLC ± 0.2 ANGLES ± 3'
MATERIAL 材料	FINISH 仕上
SEE NOTE △ 注△参照	SEE NOTE △ 注△参照

DWN	CHK	APVD	PRODUCT SPEC 製品規格	APPLICATION SPEC 取付適用規格	WEIGHT	CUSTOMER DRAWING
-----	-----	------	----------------------	----------------------------	--------	------------------

TE Connectivity Ltd.

NAME 名称			PLUG ASSEMBLY WITH BOSS 0.8MM PITCH BTB CONNECTOR EMBOSS MATING HEIGHT 3.0MM		
SIZE	CAGE CODE	DRAWING NO 番号	RESTRICTED TO		
A3	00779	G=179396			
SCALE 尺度 10:1		SHEET 2 OF 2	REV H4		

## X-ON Electronics

Largest Supplier of Electrical and Electronic Components

*Click to view similar products for [Board to Board & Mezzanine Connectors](#) category:*

*Click to view products by [TE Connectivity](#) manufacturer:*

Other Similar products are found below :

[10135583-642402LF](#) [89885-310LF](#) [589158040000018](#) [6-1393048-0](#) [68683-613](#) [MDF7-12DP-2.54DSA](#) [MDF7-18P-2.54DSA\(01\)](#) [MDF7-20DP-2.54DSA](#) [MDF7-26D-2.54DSA\(55\)](#) [MDF7-3P-2.54DSA\(01\)](#) [MDF7B-20P-2.54DSA\(01\)](#) [MDF7B-3P-2.54DSA\(55\)](#) [MDF7C-18P-2.54DSA\(55\)](#) [MDF7P-5P-2.54DSA\(55\)](#) [75234-0516](#) [FCN-230C068-11](#) [FCN-268F012-G/BD](#) [FCN-268F036-G/BD](#) [FCN-268M012-G/0D](#) [FCN-268M024-G/1D](#) [FCN-360C008-C](#) [FCN-723J004/1](#) [MIS-048-01-F-D-DP-K](#) [832-10-034-10-001000](#) [93696-325LF](#) [11828-1FA](#) [AXK630345P](#) [18097-0013](#) [2007042-2](#) [304400-2](#) [FCN-214Q030-G/0](#) [FCN-215Q040-G/0](#) [FCN-230C068-ESA](#) [FCN-234P048-G/0](#) [FCN-235D050-G/C](#) [FCN-360A3](#) [FCN-360C040-B](#) [210-93-314-41-105000](#) [2-22603-0](#) [379-064-521-202](#) [MDF7-12P-2.54DSA\(01\)](#) [MDF7-16P-2.54DS\(56\)](#) [MDF7-16P-2.54DSA\(55\)](#) [MDF7-40DP-2.54DSA\(55\)](#) [MDF7-8P-2.54DSA\(55\)](#) [AXG720047](#) [5031084030](#) [55323-1519](#) [DF33-2P-3.3DSA\(24\)](#) [DF33-2S-3.3C](#)