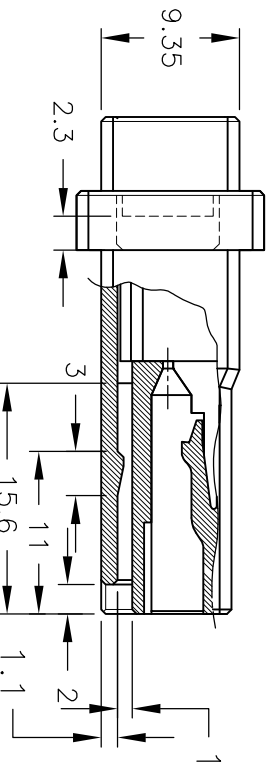


NOTES

- 1 MATERIAL: GLASS FIELD THERMO PLASTIC, POLYESTER COLOR: BLACK
- 2 TO COAT ALL SURFACE OF HOUSING WITH TEFLON
- 3 PRODUCT SPEC: 108-5349
- 4 PANEL ATTACHMENT RECOMMENDATION M3 SCREW



OBSOLETE  
OBSOLETE  
OBSOLETE  
OBSOLETE  
OBSOLETE

FINISH	KEYING PATTERN	POS.	DIMENSION	A	B	C	D	E	F	G	N	KEY	PART NUMBER
—		4	4.6-9.9	38	29-24	22-24	30	8.4	2	3	X	5-179553-4	
—		4	4.6-9.9	38	29.24	22.24	30	8.4	2	3	Y	2-179553-4	
—		4	4.6-9.9	38	29.24	22.24	30	8.4	2	3	X	1-179553-4	
—		3	4.1-9.1	33	24.16	17.16	25	8.4	2	2	Y	6-179553-3	
—		3	4.1-9.1	33	24.16	17.16	25	8.4	2	2	X	5-179553-3	
—		3	4.1-9.1	33	24.16	17.16	25	8.4	2	2	Y	2-179553-3	
—		3	4.1-9.1	33	24.16	17.16	25	8.4	2	2	X	1-179553-3	
—		2	3.6-8.3	28	19.08	12.08	20	8.4	2	1	X	5-179553-2	
—		2	3.6-8.3	28	19.08	12.08	20	8.4	2	1	Y	2-179553-2	
—		2	3.6-8.3	28	19.08	12.08	20	8.4	2	1	X	1-179553-2	

LTR	REVISION RECORD	DR	CHK	DATE	CHK	DATE
H	REVISED	HUNY		24 APR 94		
G	REVISED PER ECR-11-012413	T.T.M		16 JUN 91		

(WIRE RANGE)	(INSULATION-DIA)	(MATERIAL)	(FINISH)
—	—	—	—

(NAME)	(GENERAL TOLERANCE)	SIZE	LOC	(NO.)
WIRE TO WIRE TAB HSG FOR DYNAMIC D-3200S PANEL MOUNT TYPE	K10: ±0.2 K10.50: ±0.25 K10.3: ±0.3	A3	J	179553



WIRE TO WIRE TAB HSG FOR DYNAMIC D-3200S PANEL MOUNT TYPE  
SIZE LOC (NO.)  
A3 J 179553  
(SCALE) REV. SHEET  
2/1 H 1 OF 1

## X-ON Electronics

Largest Supplier of Electrical and Electronic Components

*Click to view similar products for [Headers & Wire Housings](#) category:*

*Click to view products by [TE Connectivity](#) manufacturer:*

Other Similar products are found below :

[892-18-020-10-001101](#) [58102-G61-06LF](#) [582553-1](#) [0009485154](#) [009176003701906](#) [0050291907](#) [LY20-4P-DT1-P1E-BR](#) [02.125.8002.8](#)  
[609-3404](#) [61062-3](#) [61082-181009](#) [622-3653LF](#) [63453-116](#) [636-1030](#) [636-1427](#) [636-3427](#) [636-4007](#) [641938-9](#) [641991-4](#) [644827-2](#) [65817-010LF](#) [65817-015LF](#) [65863-015LF](#) [66207-023LF](#) [67095-007LF](#) [67601157](#) [68645-018](#) [68648-049](#) [70.362.1628.0](#) [70-4210](#) [70-4226B](#) [70-4853B](#) [707-5020](#) [707-5028](#) [71.350.2428.0](#) [71918-208LF](#) [71961-016LF](#) [733-134](#) [733-162](#) [754199-000](#) [760-3052](#) [787-8014-00](#) [79531-3000](#)  
[FCN-360C032-B](#) [FCN-367T-T012/H](#) [FCN-723D010/2](#) [80.063.4001.1](#) [800-90-001-10-001000](#) [800-90-010-10-002000](#) [801-43-002-10-013000](#)