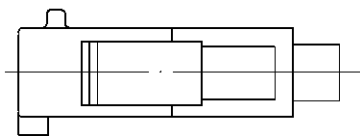
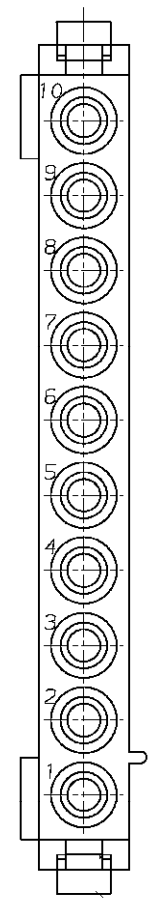
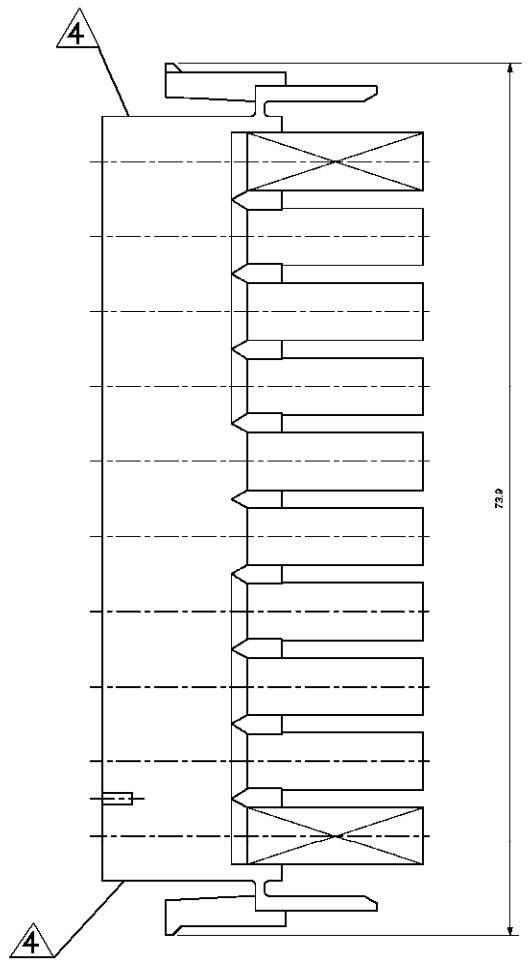
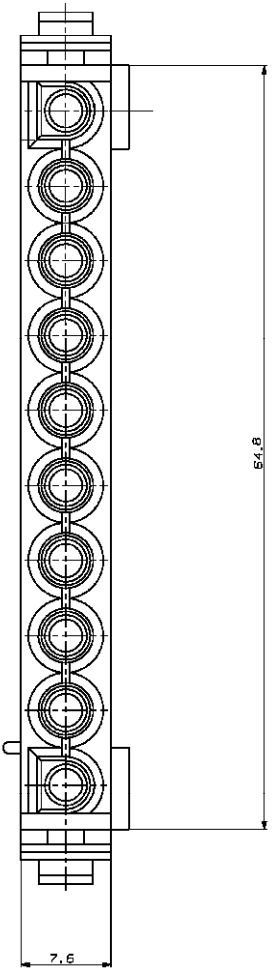


THIS DRAWING IS UNCLASSIFIED. RELEASED FOR PUBLICATION
 BY THE NATIONAL ARCHIVES. ALL RIGHTS RESERVED.

REV	DATE	DESCRIPTION	BY	CHK	APP
A1					
A5		REVISED PER ECR-17-014851			

- ① PHOSPHOR AND HALOGEN FREE A5
- ② MATERIAL CORRESPONDING TO THE REQUIREMENTS OF IEC 60335-1 INCLUDING GLOW WIRE TEST 750°C WITHOUT FLAME
- ③ PRELIMINARY PART NOT RELEASED FOR PRODUCTION
- ④ CSA LOGO LOCATED ON AT LEAST ONE SIDE OF THE HOUSING APPROXIMATELY AS SHOWN
- 5 DIMENSIONS SHOWN REPRESENT PRODUCT IN DRY, AS MOLDED, CONDITION. ADDITIONAL 2% GROWTH DUE TO SUBSEQUENT MOISTURE ABSORPTION MAY OCCUR AND SHOULD BE ACCOUNTED FOR.



THIS DRAWING IS A CONTROLLED DOCUMENT		BY: J. BALD	APPROVED:
		DR: J. LAZARO	DATE:
		APP: L. BAILLIE	DATE:
		PROJ: 1001	REV: 0031
		PRODUCTION SPEC:	114.18011
		DATE:	114.18011
		SCALE:	4:1
		SHEET:	1
		REV:	A5

PA6 UL94 V-0	NATURAL	1-1863004-2
PA6 UL94 V-0	NATURAL	1-1863004-1
PA6 UL94 V-0	NATURAL	1-1863004-1
MATERIAL:	COLOR:	PART NUMBER:

UNIVERSAL MNL 10 WAY HOUSING
100779
1863004

X-ON Electronics

Largest Supplier of Electrical and Electronic Components

Click to view similar products for [Pin & Socket Connectors](#) category:

Click to view products by [TE Connectivity](#) manufacturer:

Other Similar products are found below :

[6450822-1](#) [770392-1](#) [794042-1](#) [796885-1](#) [8-794535-1](#) [PLR3455ACS-222](#) [R929991004](#) [R929993003](#) [1403611-1](#) [1-480349-5](#) [152302-5](#)
[153211-2](#) [1586092-1](#) [1586129-1](#) [1586681-4](#) [1586700-1](#) [1586368-1](#) [1586380-1](#) [1586616-1](#) [1586680-5](#) [16-06-0038](#) [164164-5](#) [1-6609930-1](#)
[172296-1](#) [19-09-2035](#) [200503-1](#) [200788-2](#) [2029090-4](#) [2029095-4](#) [925061-7](#) [293734-4](#) [293737-2](#) [1-765362-4](#) [1871534-1](#) [200833-4](#)
[2008625-2](#) [2029027-2](#) [2029096-4](#) [R929991000](#) [R929991002](#) [R929993000](#) [319-10-101-00-005000](#) [319-10-102-00-001000](#) [319-10-104-00-001000](#) [319-10-105-00-001000](#) [319-10-108-00-001000](#) [319-10-112-00-006000](#) [39-01-8019](#) [319-10-101-00-001000](#) [319-10-102-00-005000](#)