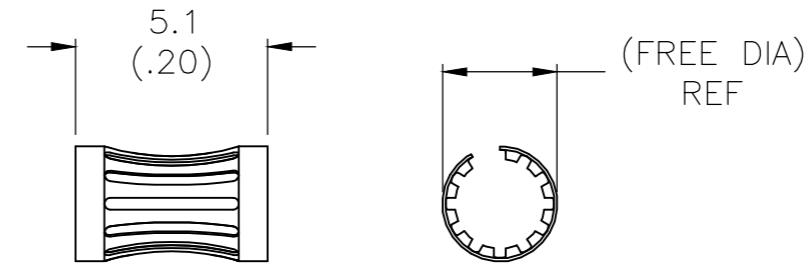
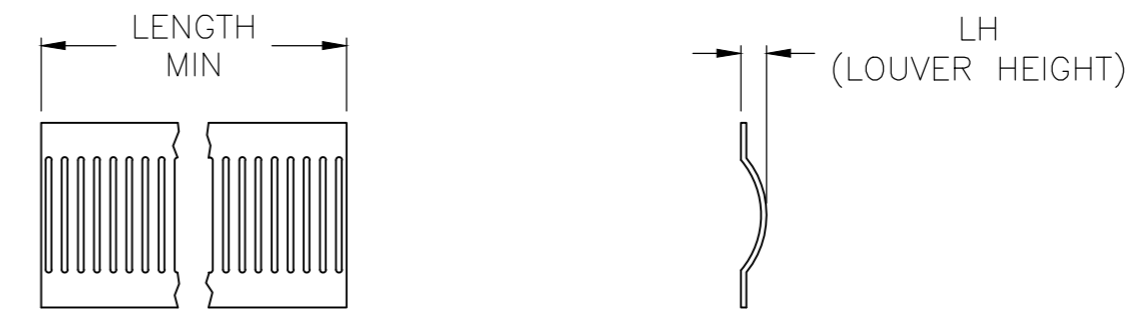


THIS DRAWING IS UNPUBLISHED. RELEASED FOR PUBLICATION  
 © COPYRIGHT - By - ALL RIGHTS RESERVED.

REVISIONS					
P	LTR	DESCRIPTION	DATE	DWN	APVD
V		REVISED PER ECO-17-013721	16NOV2017	RS	MZ
W		REVISED PER ECO-18-007230	10MAY2018	RS	MZ
W1		REVISED PER ECO-20-003926	14APR2020	RK	MZ



STYLE A  
(FEMALE)



STYLE C  
(STRIP)

- 1 FINISH: SILVER PLATE 200uIN THICK MIN.
  - 2 FINISH: NICKEL PLATE 40uIN THICK MIN.
  - 3 FINISH: GOLD PLATE 10uIN THICK MIN.
  - 4 FINISH: GOLD PLATE 50uIN THICK MIN.
  - 5 FINISH: GOLD PLATE 20uIN THICK MIN.
  - 6 FINISH: TIN PLATE 300uIN THICK MIN.
  - 7 -
  - 8 FINISH: GOLD PLATE 30uIN THICK MIN.
  - 9 -
  - 10 -
  - 11 PLATING NOTES ARE TO BE INTERPRETED AS FOLLOWS 6-8 AS 6 OVER 8.
  - 12 MATERIAL: CDA17200, BeCu.
  - 13 MATERIAL: STAINLESS STEEL
  - 14 MATERIAL: CDA17410, BeCu.
  - 15 FINISH: HARD GOLD OVER NICKEL PLATE.
- 16** OBSOLETE PARTS: OBSOLETE CIS STREAMLINING PER D.RENAUD/D.SINISI

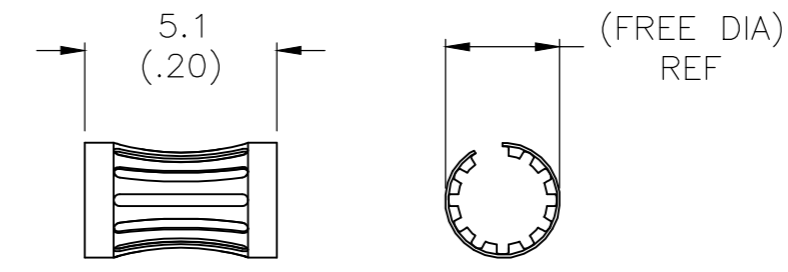
STYLE	(FREE DIA)	LH	LENGTH	MAT'L (NOTE)	MATING PIN	φ REF	PLATING NOTE NO.	NUM LOUV	MAT'L THK	REF	PART NO.		
A	[.83]	[.022]	--	12	19	[.750]	3-2	82	0.12	[.005]	05043	5-192046-0	OBSOLETE
A	[.83]	[.022]	--	12	19	[.750]	UNPL	82	0.12	[.005]	05115	4-192046-9	OBSOLETE
A	[.76]	[.022]	--	12	16.8	[.660]	UNPL	75	0.12	[.005]	05141	4-192046-8	OBSOLETE
A	[.73]	[.016]	--	13	15.9	[.625]	3-2	71	0.12	[.005]	05175	4-192046-7	OBSOLETE
A	[.73]	[.018]	--	12	15.9	[.625]	4-2	71	0.12	[.005]	05174	4-192046-6	OBSOLETE
A	[.73]	[.022]	--	12	15.3	[.602]	3-2	67	0.12	[.005]	05049	4-192046-5	OBSOLETE
A	[.73]	[.022]	--	12	15.2	[.600]	UNPL	67	0.12	[.005]	05065	4-192046-4	OBSOLETE
A	[.73]	[.018]	--	12	14.8	[.584]	3-2	65	0.15	[.006]	05022	4-192046-3	OBSOLETE
A	[.70]	[.018]	--	12	13	[.514]	UNPL	58	0.12	[.005]	05102	4-192046-2	OBSOLETE
A	[.57]	--	--	12	12.7	[.500]	1-2	57	0.20	[.008]	05182	4-192046-1	OBSOLETE
A	[.68]	[.016]	--	13	12.7	[.500]	UNPL	57	0.12	[.005]	05176	4-192046-0	OBSOLETE
A	[.68]	[.018]	--	12	12.7	[.500]	1-2	57	0.12	[.005]	05143	3-192046-9	OBSOLETE
											05184	3-192046-8	OBSOLETE
A	[.68]	[.018]	--	12	12.7	[.499]	4-2	56	0.15	[.006]	05144	3-192046-7	OBSOLETE
A	[.64]	[.022]	--	14	12.4	[.490]	1-2	56	0.12	[.005]	05135	3-192046-6	OBSOLETE
A	[.64]	[.022]	--	14	12.4	[.490]	UNPL	56	0.12	[.005]	05138	3-192046-5	OBSOLETE
--	[.64]	[.022]	--	14	12.4	[.490]	1-2	56	0.10	[.004]	05148	3-192046-4	OBSOLETE
A	[.64]	[.022]	--	14	12.4	[.490]	UNPL	56	0.10	[.004]	05151	3-192046-3	OBSOLETE
--	[.55]	[.018]	--	12	12.3	[.486]	UNPL	56	0.12	[.005]	05099	3-192046-2	OBSOLETE
A	[.50]	[.022]	--	13	11.6	[.458]	UNPL	51	0.12	[.005]	05145	3-192046-1	OBSOLETE
A	[.44]	[.022]	--	12	10.2	[.400]	3-2	44	0.12	[.005]	05029	3-192046-0	OBSOLETE
A	[.44]	[.022]	--	12	10.2	[.400]	UNPL	44	0.12	[.005]	05066	2-192046-9	OBSOLETE
A	[.42]	[.018]	--	12	9.5	[.375]	3-2	42	0.15	[.006]	05019	2-192046-8	OBSOLETE
A	--	--	--	12	9.5	[.375]	UNPL	42	0.15	[.006]	05032	2-192046-7	OBSOLETE
A	[.42]	--	--	13	9.5	[.375]	1-2	42	0.12	[.005]	05137	2-192046-6	OBSOLETE
A	[.38]	--	--	12	7.9	[.312]	6	36	0.15	[.006]	05133	2-192046-5	OBSOLETE
A	[.38]	--	--	12	7.9	[.312]	3-2	36	0.15	[.006]	05120	2-192046-4	OBSOLETE
A	[.34]	--	--	12	7.5	[.297]	3-2	34	0.15	[.006]	05122	2-192046-3	OBSOLETE
							--	2-192046-2	OBSOLETE				
A	[.32]	[.018]	--	12	6.9	[.270]	1-2	31	0.12	[.005]	05077	2-192046-1	OBSOLETE
A	[.33]	[.018]	--	12	6.3	[.250]	6	28	0.15	[.006]	05040	2-192046-0	OBSOLETE
A	[.33]	[.018]	--	12	6.3	[.250]	3-2	28	0.15	[.006]	05064	1-192046-9	OBSOLETE
SUPERSEDED BY 9-192046-4											05054	1-192046-8	SUPERSEDED BY 9-192046-4
A	[.33]	[.018]	--	12	6.3	[.250]	UNPL	28	0.15	[.006]	05038	1-192046-7	OBSOLETE
A	[.27]	[.018]	--	12	5.7	[.225]	4-2	25	0.15	[.006]	05051	1-192046-6	OBSOLETE
A	[.27]	[.018]	--	12	5.7	[.225]	1-2	25	0.15	[.006]	05163	1-192046-5	OBSOLETE
A	[.27]	[.018]	--	12	5.7	[.225]	UNPL	25	0.15	[.006]	05046	1-192046-4	OBSOLETE
A	[.34]	[.022]	--	14	5.1	[.200]	3-2	24	0.12	[.005]	05157	1-192046-3	OBSOLETE
A	[.34]	[.022]	--	14	5.1	[.200]	UNPL	24	0.12	[.005]	05156	1-192046-2	OBSOLETE
A	[.24]	[.018]	--	12	5	[.197]	1-2	22	0.15	[.006]	05147	1-192046-1	OBSOLETE
A	[.24]	[.018]	--	12	5	[.197]	UNPL	22	0.15	[.006]	05146	1-192046-0	OBSOLETE
A	[.23]	[.018]	--	12	4.7	[.187]	3-2	21	0.15	[.006]	05050	192046-9	OBSOLETE
A	[.23]	[.018]	--	12	4.7	[.187]	1-2	21	0.15	[.006]	05103	192046-8	OBSOLETE
A	[.23]	[.022]	--	12	4.7	[.187]	3-2	21	0.12	[.005]	05016	192046-7	OBSOLETE
A	[.22]	[.018]	--	12	4.4	[.172]	3-2	20	0.15	[.006]	05015	192046-6	OBSOLETE
A	[.22]	[.018]	--	12	4.4	[.172]	1-2	20	0.15	[.006]	05162	192046-5	OBSOLETE
A	[.22]	[.018]	--	12	4.4	[.172]	UNPL	20	0.15	[.006]	05155	192046-4	OBSOLETE
A	[.19]	[.018]	--	12	4.1	[.160]	5-2	18	0.10	[.004]	05114	192046-3	OBSOLETE
A	[.19]	[.018]	--	12	4.1	[.160]	UNPL	18	0.10	[.004]	05113	192046-2	OBSOLETE
A	[.19]	[.018]	--	12	4	[.157]	4-2	18	0.15	[.006]	05134	192046-1	OBSOLETE

THIS DRAWING IS A CONTROLLED DOCUMENT.		DWN	-	<b>STE</b> TE Connectivity	
DIMENSIONS: mm		CHK	J.TURNER		
TOLERANCES UNLESS OTHERWISE SPECIFIED:		APVD	-	NAME	
0 PLC ± -		PRODUCT SPEC	-	CONTACT BAND,FEMALE	
1 PLC ± -		APPLICATION SPEC	-	SIZE	A2
2 PLC ± 0.5 [.02]				CAGE CODE	00779
3 PLC ± 0.25 [.010]				DRAWING NO	C=192046
4 PLC ± -				RESTRICTED TO	-
ANGLES ± -		WEIGHT	-	SCALE	1:1
MATERIAL	-	CUSTOMER DRAWING	-	SHEET	1 of 2
FINISH	-			REV	W1

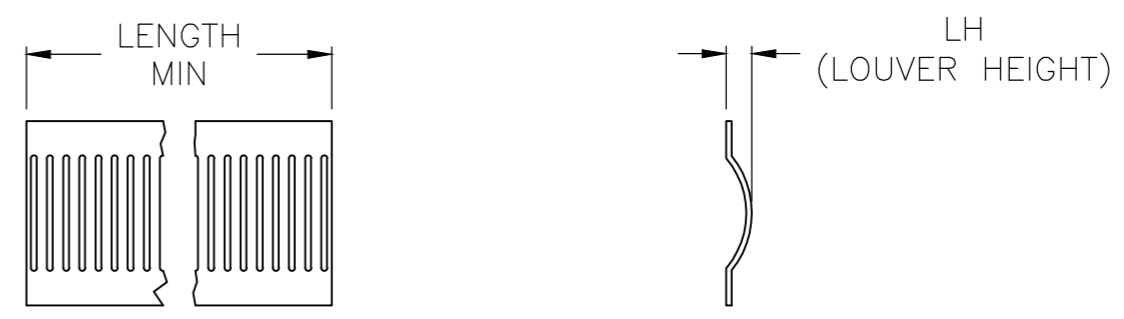
THIS DRAWING IS UNPUBLISHED. RELEASED FOR PUBLICATION  
 © COPYRIGHT - By - ALL RIGHTS RESERVED.

REVISIONS				
P	LTR	DESCRIPTION	DATE	APVD
-	-	SEE SHEET 1	-	-

A	[.34]	[.022]	--	12	5.1[.200]	3-2	24	0.12[.005]	--	9-192046-9	OBSOLETE
A	[.19]	[.022]	--	12	3.4[.134]	UNPL	15	0.15[.006]	--	9-192046-8	OBSOLETE
A	[.19]	[.022]	--	12	3.4[.134]	8-2	16	0.15[.006]	--	9-192046-7	OBSOLETE
A	[.19]	[.022]	--	12	3.4[.134]	8-2	16	0.15[.006]	--	9-192046-6	OBSOLETE
A	[.19]	[.022]	--	12	3.4[.134]	UNPL	15	0.15[.006]	--	9-192046-5	OBSOLETE
A	[.35]	[.018]	--	12	6[.236]	1-2	27	0.15[.006]	--	9-192046-4	OBSOLETE
A	[.45]	[.018]	--	12	9[.354]	1-2	40	0.15[.006]	--	9-192046-3	OBSOLETE
A	[.19]	[.018]	--	12	3.17[.125]	1-2	15	0.15[.006]	--	9-192046-2	OBSOLETE
A	[.12]	[.018]	--	12	1.9[.075]	15	10	0.08[.003]	--	9-192046-1	OBSOLETE
A	[.12]	[.018]	--	12	1.9[.075]	UNPL	10	0.08[.003]	--	9-192046-0	OBSOLETE
A	[.32]	[.022]	--	12	5.7[.225]	UNPL	25	0.15[.006]	--	8-192046-9	OBSOLETE
A	[.21]	[.022]	--	12	5.4[.211]	UNPL	19	0.12[.005]	--	8-192046-8	OBSOLETE
A	[1.66]	[.022]	--	12	38.1[1.500]	UNPL	168	0.15[.006]	--	8-192046-7	OBSOLETE
A	[1.10]	[.018]	--	12	23.7[.934]	UNPL	105	0.12[.005]	--	8-192046-6	OBSOLETE
A	[.73]	[.016]	--	13	15.9[.625]	UNPL	71	0.12[.005]	--	8-192046-5	OBSOLETE
A	[.73]	[.018]	--	12	15.9[.625]	UNPL	71	0.12[.005]	--	8-192046-4	OBSOLETE
A	[.73]	[.018]	--	12	14.8[.584]	UNPL	65	0.15[.006]	--	8-192046-3	OBSOLETE
A	[.68]	[.018]	--	12	12.7[.500]	UNPL	57	0.12[.005]	--	8-192046-2	OBSOLETE
A	[.68]	[.018]	--	12	12.7[.500]	UNPL	56	0.15[.006]	--	8-192046-1	OBSOLETE
--	--	--	--	--	--	--	--	--	--	8-192046-0	OBSOLETE
A	[.32]	[.018]	--	12	6.9[.270]	UNPL	31	0.12[.005]	--	7-192046-9	OBSOLETE
A	[.23]	[.018]	--	12	4.7[.187]	UNPL	21	0.15[.006]	--	7-192046-8	OBSOLETE
A	[.19]	[.018]	--	12	4.5[.157]	UNPL	18	0.15[.006]	05189	7-192046-7	OBSOLETE
--	--	--	--	--	--	--	--	--	--	7-192046-6	OBSOLETE
A	[.45]	[.018]	--	12	9[.354]	1-2	40	0.20[.008]	--	7-192046-5	OBSOLETE
A	[.45]	[.018]	--	12	9[.354]	UNPL	40	0.20[.008]	--	7-192046-4	OBSOLETE
A	[.16]	[.018]	--	12	3[.118]	1-2	14	0.20[.008]	--	7-192046-3	OBSOLETE
A	[.16]	[.018]	--	12	3[.118]	UNPL	14	0.20[.008]	--	7-192046-2	OBSOLETE
SUPERSEDED BY 9-192046-3											
A	[.45]	[.018]	--	12	9[.354]	UNPL	40	0.15[.006]	--	7-192046-0	OBSOLETE
A	[.16]	[.018]	--	12	3[.118]	1-2	14	0.15[.006]	--	6-192046-9	OBSOLETE
A	[.16]	[.018]	--	12	3[.118]	UNPL	14	0.15[.006]	--	6-192046-8	OBSOLETE
A	[.45]	[.018]	--	12	9[.354]	1-2	40	0.12[.005]	--	6-192046-7	OBSOLETE
A	[.45]	[.018]	--	12	9[.354]	UNPL	40	0.12[.005]	--	6-192046-6	OBSOLETE
A	[.16]	[.018]	--	12	3[.118]	1-2	14	0.12[.005]	--	6-192046-5	OBSOLETE
A	[.16]	[.018]	--	12	3[.118]	UNPL	14	0.12[.005]	--	6-192046-4	OBSOLETE
A	[.32]	[.022]	--	12	5.7[.225]	4-2	25	0.15[.006]	--	6-192046-3	OBSOLETE
A	[.21]	[.022]	--	12	5.4[.211]	1-2	19	0.12[.005]	--	6-192046-2	OBSOLETE
SUPERSEDED BY 6-192044-0											
A	[.18]	[.022]	--	12	3.4[.134]	UNPL	16	0.20[.008]	--	6-192046-0	OBSOLETE
A	[.19]	[.022]	--	12	3.4[.134]	4-2	16	0.15[.006]	--	5-192046-9	OBSOLETE
A	[.19]	[.022]	--	12	3.4[.134]	UNPL	16	0.15[.006]	--	5-192046-8	OBSOLETE
A	--	[.022]	--	12	110.2[4.340]	1-2	--	0.12[.005]	05088	5-192046-7	OBSOLETE
A	--	[.022]	--	12	91.4[3.600]	3-2	--	0.15[.006]	05067	5-192046-6	OBSOLETE
A	[1.66]	[.022]	--	12	38.1[1.500]	3-2	168	0.15[.006]	05045	5-192046-5	OBSOLETE
A	[1.10]	[.018]	--	12	23.7[.934]	1-2	105	0.12[.005]	05078	5-192046-4	OBSOLETE
A	[1.10]	[.022]	--	12	22.7[.895]	UNPL	102	0.12[.005]	05082	5-192046-3	OBSOLETE
A	[1.20]	[.022]	--	12	20[.788]	UNPL	89	0.12[.005]	05129	5-192046-2	OBSOLETE
SUPERSEDED BY 5-192046-1											
A	--	--	--	--	--	--	--	--	05081	5-192046-1	OBSOLETE



STYLE A  
(FEMALE)



STYLE C  
(STRIP)

THIS DRAWING IS A CONTROLLED DOCUMENT.		DWN	-	<b>TE</b> TE Connectivity	
DIMENSIONS: mm		CHK	J.TURNER 08-04-93		
TOLERANCES UNLESS OTHERWISE SPECIFIED:		APVD	-	NAME	
0 PLC ± -		PRODUCT SPEC		CONTACT BAND,FEMALE	
1 PLC ± -		APPLICATION SPEC		SIZE	A2
2 PLC ± 0.5 [.02]		WEIGHT		CAGE CODE	00779
3 PLC ± 0.25 [.010]		CUSTOMER DRAWING		DRAWING NO	C=192046
4 PLC ± -		SCALE		RESTRICTED TO	-
ANGLES ± -		1:1		SHEET	2 of 2
MATERIAL		REV		W1	

## X-ON Electronics

Largest Supplier of Electrical and Electronic Components

*Click to view similar products for [Heavy Duty Power Connectors](#) category:*

*Click to view products by [TE Connectivity](#) manufacturer:*

Other Similar products are found below :

[647757-1](#) [6643411-1](#) [6646058-2](#) [6646137-1](#) [6646138-1](#) [6646479-1](#) [6646608-1](#) [6646786-1](#) [6646940-1](#) [6651091-1](#) [6651525-1](#) [6651529-1](#)  
[6651788-1](#) [696475-1](#) [702-32-01109](#) [703-25-02205](#) [73000005059](#) [73000005642](#) [73080255059](#) [73080965046](#) [765-15-0080A](#) [765-16-0080B](#)  
[765-18-0080D](#) [829992-1](#) [902-77-02113](#) [PS00/A0620/6300](#) [PS25/A0420/63](#) [129-1J](#) [1409400](#) [AN0024023](#) [E6374G1](#) [e6389g2](#) [157-43GW8](#)  
[MS3117-14AC](#) [1643543-1](#) [1650540-1](#) [1651811-2](#) [1766260-1](#) [1766282-1](#) [1766966-1](#) [1791340000](#) [NLDFT-3-BL-L-S120-M40A](#) [NLDFT-N-](#)  
[W-L-C240-M40B](#) [NLS-2-R-C240-M40B](#) [NLS-N-W-C240-M40B](#) [NPS-3-BL-T6](#) [1986615-1](#) [2-1589900-8](#) [2199314-1](#) [KA8102](#)