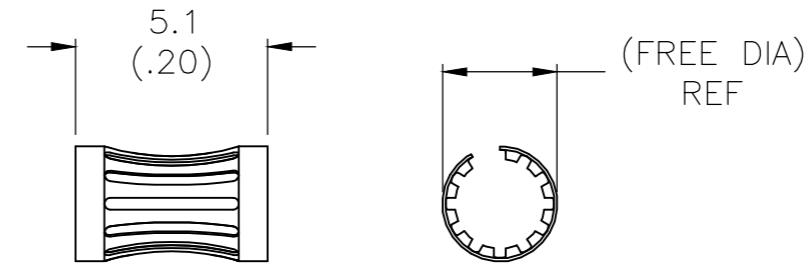
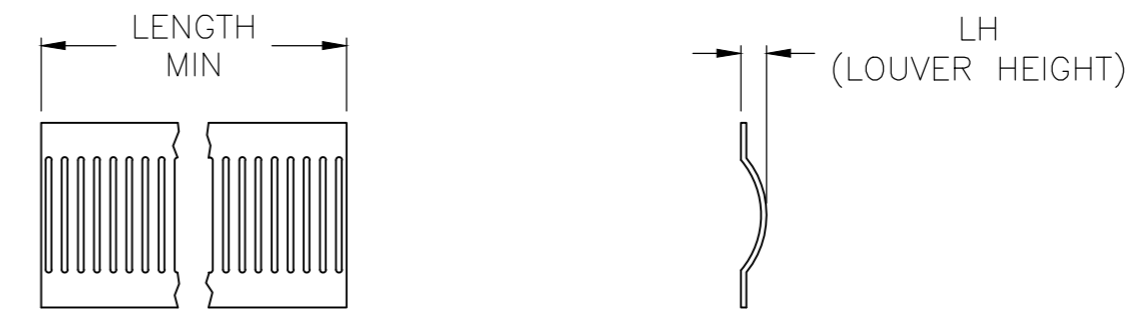


THIS DRAWING IS UNPUBLISHED. RELEASED FOR PUBLICATION
 © COPYRIGHT - By - ALL RIGHTS RESERVED.

REVISIONS					
P	LTR	DESCRIPTION	DATE	DWN	APVD
V		REVISED PER ECO-17-013721	16NOV2017	RS	MZ
W		REVISED PER ECO-18-007230	10MAY2018	RS	MZ
W1		REVISED PER ECO-20-003926	14APR2020	RK	MZ



STYLE A
(FEMALE)



STYLE C
(STRIP)

STYLE	(FREE DIA)	LH	LENGTH	MAT'L (NOTE)	MATING PIN	φ REF	PLATING NOTE NO.	NUM LOUV	MAT'L THK	REF	PART NO.	
A	[.83]	[.022]	--	12	19	[.750]	3-2	82	0.12	[.005]	05043 5-192046-0	OBSOLETE
A	[.83]	[.022]	--	12	19	[.750]	UNPL	82	0.12	[.005]	05115 4-192046-9	OBSOLETE
A	[.76]	[.022]	--	12	16.8	[.660]	UNPL	75	0.12	[.005]	05141 4-192046-8	OBSOLETE
A	[.73]	[.016]	--	13	15.9	[.625]	3-2	71	0.12	[.005]	05175 4-192046-7	OBSOLETE
A	[.73]	[.018]	--	12	15.9	[.625]	4-2	71	0.12	[.005]	05174 4-192046-6	OBSOLETE
A	[.73]	[.022]	--	12	15.3	[.602]	3-2	67	0.12	[.005]	05049 4-192046-5	OBSOLETE
A	[.73]	[.022]	--	12	15.2	[.600]	UNPL	67	0.12	[.005]	05065 4-192046-4	OBSOLETE
A	[.73]	[.018]	--	12	14.8	[.584]	3-2	65	0.15	[.006]	05022 4-192046-3	OBSOLETE
A	[.70]	[.018]	--	12	13	[.514]	UNPL	58	0.12	[.005]	05102 4-192046-2	OBSOLETE
A	[.57]	--	--	12	12.7	[.500]	1-2	57	0.20	[.008]	05182 4-192046-1	OBSOLETE
A	[.68]	[.016]	--	13	12.7	[.500]	UNPL	57	0.12	[.005]	05176 4-192046-0	OBSOLETE
A	[.68]	[.018]	--	12	12.7	[.500]	1-2	57	0.12	[.005]	05143 3-192046-9	OBSOLETE
											05184 3-192046-8	OBSOLETE
A	[.68]	[.018]	--	12	12.7	[.499]	4-2	56	0.15	[.006]	05144 3-192046-7	OBSOLETE
A	[.64]	[.022]	--	14	12.4	[.490]	1-2	56	0.12	[.005]	05135 3-192046-6	OBSOLETE
A	[.64]	[.022]	--	14	12.4	[.490]	UNPL	56	0.12	[.005]	05138 3-192046-5	OBSOLETE
--	[.64]	[.022]	--	14	12.4	[.490]	1-2	56	0.10	[.004]	05148 3-192046-4	OBSOLETE
A	[.64]	[.022]	--	14	12.4	[.490]	UNPL	56	0.10	[.004]	05151 3-192046-3	OBSOLETE
--	[.55]	[.018]	--	12	12.3	[.486]	UNPL	56	0.12	[.005]	05099 3-192046-2	OBSOLETE
A	[.50]	[.022]	--	13	11.6	[.458]	UNPL	51	0.12	[.005]	05145 3-192046-1	
A	[.44]	[.022]	--	12	10.2	[.400]	3-2	44	0.12	[.005]	05029 3-192046-0	OBSOLETE
A	[.44]	[.022]	--	12	10.2	[.400]	UNPL	44	0.12	[.005]	05066 2-192046-9	OBSOLETE
A	[.42]	[.018]	--	12	9.5	[.375]	3-2	42	0.15	[.006]	05019 2-192046-8	OBSOLETE
A	--	--	--	12	9.5	[.375]	UNPL	42	0.15	[.006]	05032 2-192046-7	OBSOLETE
A	[.42]	--	--	13	9.5	[.375]	1-2	42	0.12	[.005]	05137 2-192046-6	OBSOLETE
A	[.38]	--	--	12	7.9	[.312]	6	36	0.15	[.006]	05133 2-192046-5	OBSOLETE
A	[.38]	--	--	12	7.9	[.312]	3-2	36	0.15	[.006]	05120 2-192046-4	OBSOLETE
A	[.34]	--	--	12	7.5	[.297]	3-2	34	0.15	[.006]	05122 2-192046-3	OBSOLETE
							--	2-192046-2				OBSOLETE
A	[.32]	[.018]	--	12	6.9	[.270]	1-2	31	0.12	[.005]	05077 2-192046-1	OBSOLETE
A	[.33]	[.018]	--	12	6.3	[.250]	6	28	0.15	[.006]	05040 2-192046-0	
A	[.33]	[.018]	--	12	6.3	[.250]	3-2	28	0.15	[.006]	05064 1-192046-9	
SUPERSEDED BY 9-192046-4											05054 1-192046-8	SUPERSEDED BY 9-192046-4
A	[.33]	[.018]	--	12	6.3	[.250]	UNPL	28	0.15	[.006]	05038 1-192046-7	OBSOLETE
A	[.27]	[.018]	--	12	5.7	[.225]	4-2	25	0.15	[.006]	05051 1-192046-6	
A	[.27]	[.018]	--	12	5.7	[.225]	1-2	25	0.15	[.006]	05163 1-192046-5	OBSOLETE
A	[.27]	[.018]	--	12	5.7	[.225]	UNPL	25	0.15	[.006]	05046 1-192046-4	OBSOLETE
A	[.34]	[.022]	--	14	5.1	[.200]	3-2	24	0.12	[.005]	05157 1-192046-3	OBSOLETE
A	[.34]	[.022]	--	14	5.1	[.200]	UNPL	24	0.12	[.005]	05156 1-192046-2	OBSOLETE
A	[.24]	[.018]	--	12	5	[.197]	1-2	22	0.15	[.006]	05147 1-192046-1	OBSOLETE
A	[.24]	[.018]	--	12	5	[.197]	UNPL	22	0.15	[.006]	05146 1-192046-0	OBSOLETE
A	[.23]	[.018]	--	12	4.7	[.187]	3-2	21	0.15	[.006]	05050 192046-9	OBSOLETE
A	[.23]	[.018]	--	12	4.7	[.187]	1-2	21	0.15	[.006]	05103 192046-8	OBSOLETE
A	[.23]	[.022]	--	12	4.7	[.187]	3-2	21	0.12	[.005]	05016 192046-7	OBSOLETE
A	[.22]	[.018]	--	12	4.4	[.172]	3-2	20	0.15	[.006]	05015 192046-6	
A	[.22]	[.018]	--	12	4.4	[.172]	1-2	20	0.15	[.006]	05162 192046-5	OBSOLETE
A	[.22]	[.018]	--	12	4.4	[.172]	UNPL	20	0.15	[.006]	05155 192046-4	OBSOLETE
A	[.19]	[.018]	--	12	4.1	[.160]	5-2	18	0.10	[.004]	05114 192046-3	OBSOLETE
A	[.19]	[.018]	--	12	4.1	[.160]	UNPL	18	0.10	[.004]	05113 192046-2	OBSOLETE
A	[.19]	[.018]	--	12	4	[.157]	4-2	18	0.15	[.006]	05134 192046-1	OBSOLETE

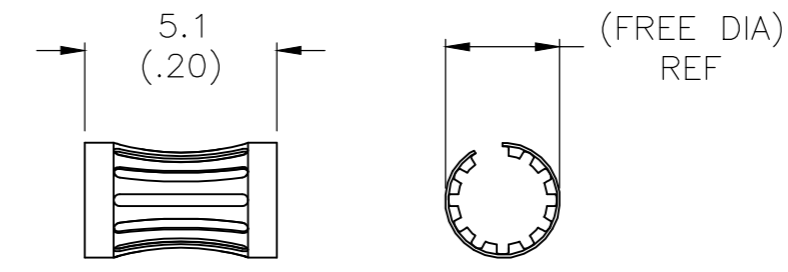
- FINISH: SILVER PLATE 200uIN THICK MIN.
 - FINISH: NICKEL PLATE 40uIN THICK MIN.
 - FINISH: GOLD PLATE 10uIN THICK MIN.
 - FINISH: GOLD PLATE 50uIN THICK MIN.
 - FINISH: GOLD PLATE 20uIN THICK MIN.
 - FINISH: TIN PLATE 300uIN THICK MIN.
 -
 - FINISH: GOLD PLATE 30uIN THICK MIN.
 -
 -
 - PLATING NOTES ARE TO BE INTERPRETED AS FOLLOWS 6-8 AS 6 OVER 8.
 - MATERIAL: CDA17200, BeCu.
 - MATERIAL: STAINLESS STEEL
 - MATERIAL: CDA17410, BeCu.
 - FINISH: HARD GOLD OVER NICKEL PLATE.
- △ OBSOLETE PARTS: OBSOLETE CIS STREAMLINING PER D.RENAUD/D.SINISI

THIS DRAWING IS A CONTROLLED DOCUMENT.		DWN -	TE Connectivity	
DIMENSIONS: mm		CHK J.TURNER	NAME -	
TOLERANCES UNLESS OTHERWISE SPECIFIED:		APVD -	PRODUCT SPEC -	
0 PLC ± -		APPLICATION SPEC -		
1 PLC ± -		WEIGHT -		
2 PLC ± 0.5 [.02]		SIZE A2		
3 PLC ± 0.25 [.010]		CAGE CODE 00779		
4 PLC ± -		DRAWING NO C=192046		
ANGLES ± -		RESTRICTED TO -		
MATERIAL -		CUSTOMER DRAWING		
FINISH -		SCALE 1:1 SHEET 1 OF 2 REV W1		

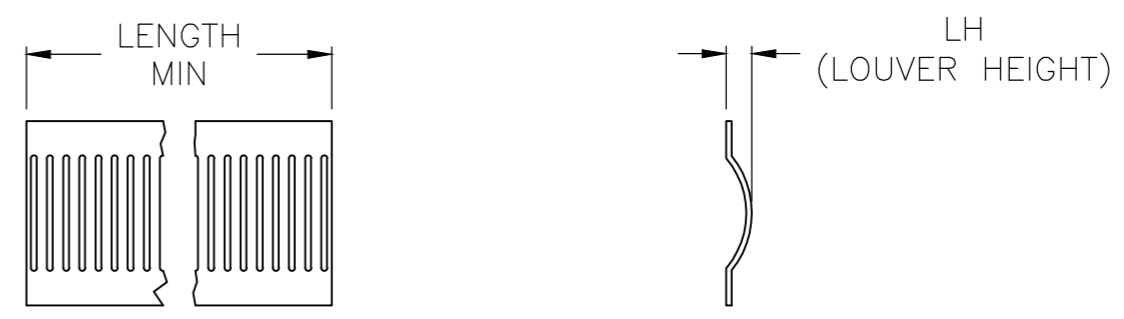
THIS DRAWING IS UNPUBLISHED. RELEASED FOR PUBLICATION
 © COPYRIGHT - By - ALL RIGHTS RESERVED.

REVISIONS				
P	LTR	DESCRIPTION	DATE	APVD
-	-	SEE SHEET 1	-	-

A	[.34]	[.022]	--	12	5.1[.200]	3-2	24	0.12[.005]	--	9-192046-9	OBSOLETE
A	[.19]	[.022]	--	12	3.4[.134]	UNPL	15	0.15[.006]	--	9-192046-8	OBSOLETE
A	[.19]	[.022]	--	12	3.4[.134]	8-2	16	0.15[.006]	--	9-192046-7	OBSOLETE
A	[.19]	[.022]	--	12	3.4[.134]	8-2	16	0.15[.006]	--	9-192046-6	OBSOLETE
A	[.19]	[.022]	--	12	3.4[.134]	UNPL	15	0.15[.006]	--	9-192046-5	OBSOLETE
A	[.35]	[.018]	--	12	6[.236]	1-2	27	0.15[.006]	--	9-192046-4	OBSOLETE
A	[.45]	[.018]	--	12	9[.354]	1-2	40	0.15[.006]	--	9-192046-3	OBSOLETE
A	[.19]	[.018]	--	12	3.17[.125]	1-2	15	0.15[.006]	--	9-192046-2	OBSOLETE
A	[.12]	[.018]	--	12	1.9[.075]	15	10	0.08[.003]	--	9-192046-1	OBSOLETE
A	[.12]	[.018]	--	12	1.9[.075]	UNPL	10	0.08[.003]	--	9-192046-0	OBSOLETE
A	[.32]	[.022]	--	12	5.7[.225]	UNPL	25	0.15[.006]	--	8-192046-9	OBSOLETE
A	[.21]	[.022]	--	12	5.4[.211]	UNPL	19	0.12[.005]	--	8-192046-8	OBSOLETE
A	[1.66]	[.022]	--	12	38.1[1.500]	UNPL	168	0.15[.006]	--	8-192046-7	OBSOLETE
A	[1.10]	[.018]	--	12	23.7[.934]	UNPL	105	0.12[.005]	--	8-192046-6	OBSOLETE
A	[.73]	[.016]	--	13	15.9[.625]	UNPL	71	0.12[.005]	--	8-192046-5	OBSOLETE
A	[.73]	[.018]	--	12	15.9[.625]	UNPL	71	0.12[.005]	--	8-192046-4	OBSOLETE
A	[.73]	[.018]	--	12	14.8[.584]	UNPL	65	0.15[.006]	--	8-192046-3	OBSOLETE
A	[.68]	[.018]	--	12	12.7[.500]	UNPL	57	0.12[.005]	--	8-192046-2	OBSOLETE
A	[.68]	[.018]	--	12	12.7[.500]	UNPL	56	0.15[.006]	--	8-192046-1	OBSOLETE
--	--	--	--	--	--	--	--	--	--	8-192046-0	OBSOLETE
A	[.32]	[.018]	--	12	6.9[.270]	UNPL	31	0.12[.005]	--	7-192046-9	OBSOLETE
A	[.23]	[.018]	--	12	4.7[.187]	UNPL	21	0.15[.006]	--	7-192046-8	OBSOLETE
A	[.19]	[.018]	--	12	4.5[.157]	UNPL	18	0.15[.006]	05189	7-192046-7	OBSOLETE
--	--	--	--	--	--	--	--	--	--	7-192046-6	OBSOLETE
A	[.45]	[.018]	--	12	9[.354]	1-2	40	0.20[.008]	--	7-192046-5	OBSOLETE
A	[.45]	[.018]	--	12	9[.354]	UNPL	40	0.20[.008]	--	7-192046-4	OBSOLETE
A	[.16]	[.018]	--	12	3[.118]	1-2	14	0.20[.008]	--	7-192046-3	OBSOLETE
A	[.16]	[.018]	--	12	3[.118]	UNPL	14	0.20[.008]	--	7-192046-2	OBSOLETE
SUPERSEDED BY 9-192046-3											
A	[.45]	[.018]	--	12	9[.354]	UNPL	40	0.15[.006]	--	7-192046-0	OBSOLETE
A	[.16]	[.018]	--	12	3[.118]	1-2	14	0.15[.006]	--	6-192046-9	OBSOLETE
A	[.16]	[.018]	--	12	3[.118]	UNPL	14	0.15[.006]	--	6-192046-8	OBSOLETE
A	[.45]	[.018]	--	12	9[.354]	1-2	40	0.12[.005]	--	6-192046-7	OBSOLETE
A	[.45]	[.018]	--	12	9[.354]	UNPL	40	0.12[.005]	--	6-192046-6	OBSOLETE
A	[.16]	[.018]	--	12	3[.118]	1-2	14	0.12[.005]	--	6-192046-5	OBSOLETE
A	[.16]	[.018]	--	12	3[.118]	UNPL	14	0.12[.005]	--	6-192046-4	OBSOLETE
A	[.32]	[.022]	--	12	5.7[.225]	4-2	25	0.15[.006]	--	6-192046-3	OBSOLETE
A	[.21]	[.022]	--	12	5.4[.211]	1-2	19	0.12[.005]	--	6-192046-2	OBSOLETE
SUPERSEDED BY 6-192044-0											
A	[.18]	[.022]	--	12	3.4[.134]	UNPL	16	0.20[.008]	--	6-192046-0	OBSOLETE
A	[.19]	[.022]	--	12	3.4[.134]	4-2	16	0.15[.006]	--	5-192046-9	OBSOLETE
A	[.19]	[.022]	--	12	3.4[.134]	UNPL	16	0.15[.006]	--	5-192046-8	OBSOLETE
A	--	[.022]	--	12	110.2[4.340]	1-2	--	0.12[.005]	05088	5-192046-7	OBSOLETE
A	--	[.022]	--	12	91.4[3.600]	3-2	--	0.15[.006]	05067	5-192046-6	OBSOLETE
A	[1.66]	[.022]	--	12	38.1[1.500]	3-2	168	0.15[.006]	05045	5-192046-5	OBSOLETE
A	[1.10]	[.018]	--	12	23.7[.934]	1-2	105	0.12[.005]	05078	5-192046-4	OBSOLETE
A	[1.10]	[.022]	--	12	22.7[.895]	UNPL	102	0.12[.005]	05082	5-192046-3	OBSOLETE
A	[1.20]	[.022]	--	12	20[.788]	UNPL	89	0.12[.005]	05129	5-192046-2	OBSOLETE
SUPERSEDED BY 5-192046-1											
A	--	--	--	--	--	--	--	--	05081	5-192046-1	OBSOLETE



STYLE A
(FEMALE)



STYLE C
(STRIP)

THIS DRAWING IS A CONTROLLED DOCUMENT.		DWN -		
DIMENSIONS: mm		CHK J.TURNER 08-04-93		
TOLERANCES UNLESS OTHERWISE SPECIFIED:		APVD -	NAME	
0 PLC ± -		PRODUCT SPEC -	CONTACT BAND,FEMALE	
1 PLC ± -		APPLICATION SPEC -	SIZE A2	CAGE CODE 00779
2 PLC ± 0.5 [.02]		WEIGHT -	DRAWING NO C=192046	RESTRICTED TO -
3 PLC ± 0.25 [.010]		CUSTOMER DRAWING		
4 PLC ± -		SCALE 1:1	SHEET 2 OF 2	REV W1
ANGLES ± -				
MATERIAL -	FINISH -			

X-ON Electronics

Largest Supplier of Electrical and Electronic Components

Click to view similar products for [Heavy Duty Power Connectors](#) category:

Click to view products by [TE Connectivity](#) manufacturer:

Other Similar products are found below :

[647757-1](#) [6643411-1](#) [6646058-2](#) [6646137-1](#) [6646138-1](#) [6646479-1](#) [6646608-1](#) [6646786-1](#) [6646940-1](#) [6651091-1](#) [6651525-1](#) [6651529-1](#)
[6651788-1](#) [696475-1](#) [702-32-01109](#) [703-25-02205](#) [73000005059](#) [73000005642](#) [73080255059](#) [73080965046](#) [765-15-0080A](#) [765-16-0080B](#)
[765-18-0080D](#) [829992-1](#) [902-77-02113](#) [PS00/A0620/6300](#) [PS25/A0420/63](#) [129-1J](#) [1409400](#) [AN0024023](#) [E6374G1](#) [e6389g2](#) [157-43GW8](#)
[MS3117-14AC](#) [1643543-1](#) [1650540-1](#) [1651811-2](#) [1766260-1](#) [1766282-1](#) [1766966-1](#) [1791340000](#) [NLDFT-3-BL-L-S120-M40A](#) [NLDFT-N-](#)
[W-L-C240-M40B](#) [NLS-2-R-C240-M40B](#) [NLS-N-W-C240-M40B](#) [NPS-3-BL-T6](#) [1986615-1](#) [2-1589900-8](#) [2199314-1](#) [KA8102](#)