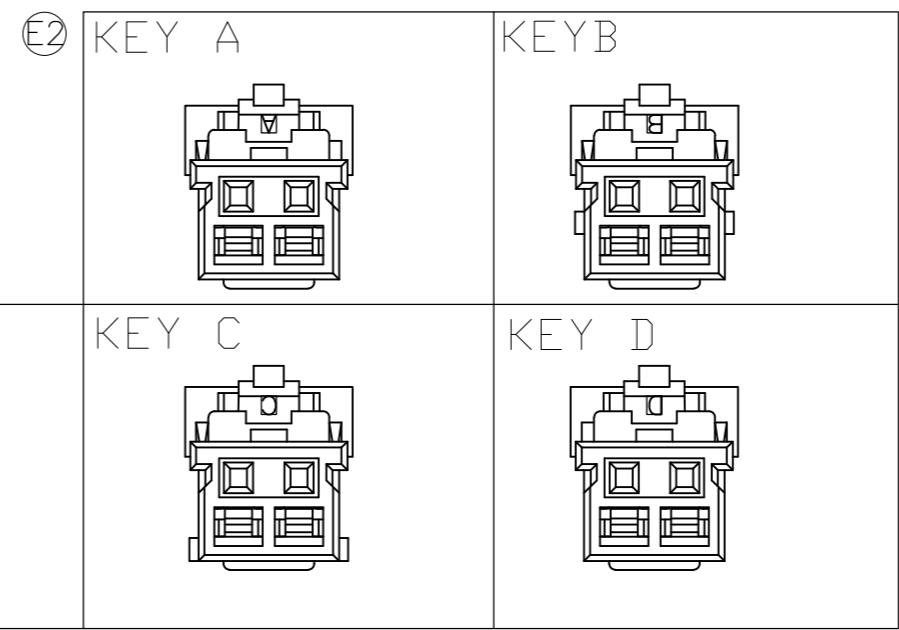
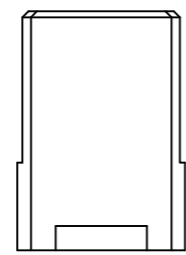


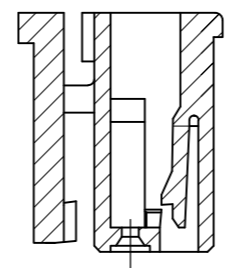
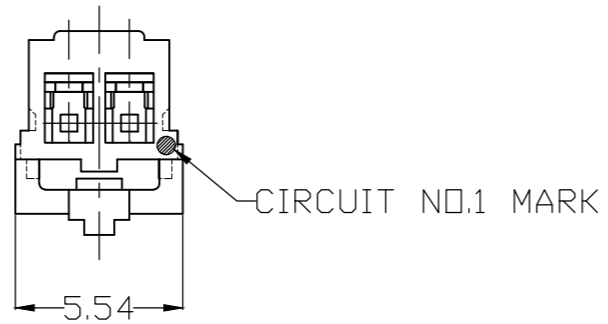
THIS DRAWING IS UNPUBLISHED. RELEASED FOR PUBLICATION  
 © COPYRIGHT - TE Connectivity ALL RIGHTS RESERVED.

| REVISIONS |     |               |           |         |
|-----------|-----|---------------|-----------|---------|
| P         | LTR | DESCRIPTION   | DATE      | APVD    |
| E2        |     | ECR-18-002718 | 23FEB2018 | M.G D.Z |

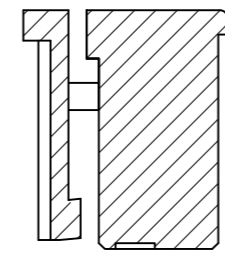
(2 POS.)



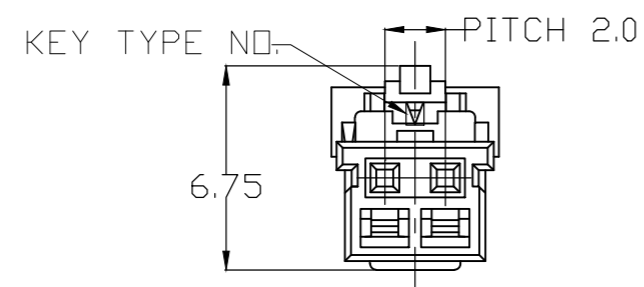
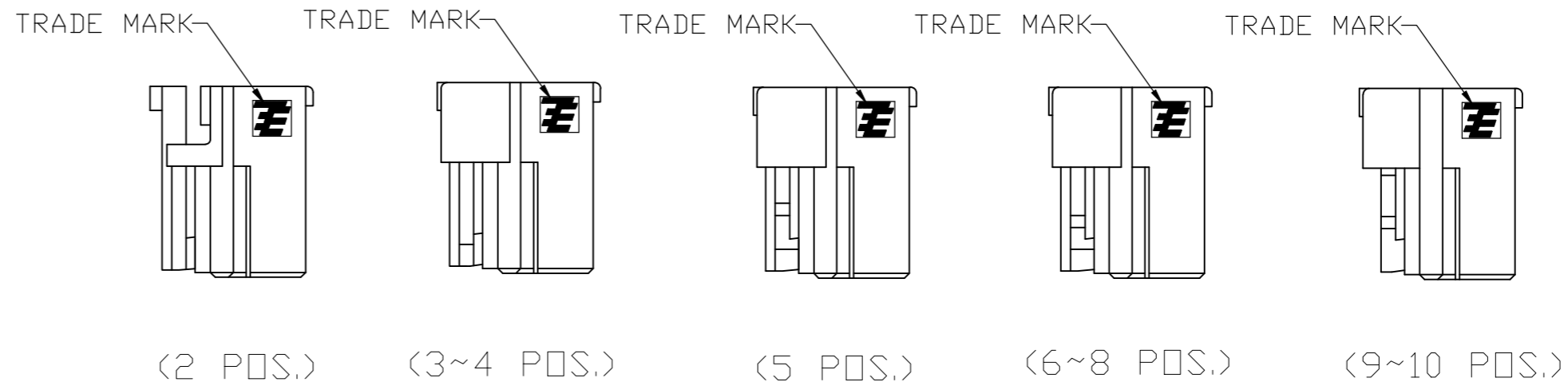
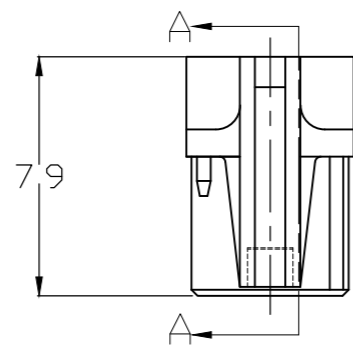
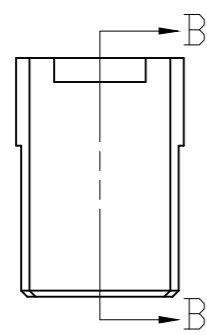
NOTE:  
 1. GENERAL TOLERANCE:  $\pm 0.3, \pm 3^\circ$   
 2. MATERIAL: 66NYLON GF(UL94V-0)  
 3. MATING CONN. P/N: SEE TABLE  
 4. APPLICABLE CONTACT P/N:  
 1971031-1



SEC. B-B



SEC. D-D



|  |   |                                  |  |                         |   |       |   |       |   |       |   |        |   |                            |            |                    |
|--|---|----------------------------------|--|-------------------------|---|-------|---|-------|---|-------|---|--------|---|----------------------------|------------|--------------------|
| THIS DRAWING IS A CONTROLLED DOCUMENT.   |   | DWN<br>Liu Jimmy<br>11JUN2008    |  |                         |   |       |   |       |   |       |   |        |   |                            |            |                    |
| DIMENSIONS:<br>mm  |   | CHK<br>Wu hapye<br>11JUN2008     |  |                         |   |       |   |       |   |       |   |        |   |                            |            |                    |
| TOLERANCES UNLESS OTHERWISE SPECIFIED:   |   | APVD<br>Zhou Julian<br>11JUN2008 | NAME<br>Grace Inertia Connector 2.0 EV Series Plug Housing |                         |   |       |   |       |   |       |   |        |   |                            |            |                    |
| <table border="1"> <tr><td>0 PLC</td><td>±</td></tr> <tr><td>1 PLC</td><td>±</td></tr> <tr><td>2 PLC</td><td>±</td></tr> <tr><td>3 PLC</td><td>±</td></tr> <tr><td>4 PLC</td><td>±</td></tr> <tr><td>ANGLES</td><td>±</td></tr> </table> |   | 0 PLC                            | ±  | 1 PLC                   | ± | 2 PLC | ± | 3 PLC | ± | 4 PLC | ± | ANGLES | ± | PRODUCT SPEC<br>108-106001 | SIZE<br>A2 | CAGE CODE<br>00779 |
| 0 PLC  | ± |                                  |  |                         |   |       |   |       |   |       |   |        |   |                            |            |                    |
| 1 PLC  | ± |                                  |  |                         |   |       |   |       |   |       |   |        |   |                            |            |                    |
| 2 PLC  | ± |                                  |  |                         |   |       |   |       |   |       |   |        |   |                            |            |                    |
| 3 PLC  | ± |                                  |  |                         |   |       |   |       |   |       |   |        |   |                            |            |                    |
| 4 PLC  | ± |                                  |  |                         |   |       |   |       |   |       |   |        |   |                            |            |                    |
| ANGLES   | ± |                                  |  |                         |   |       |   |       |   |       |   |        |   |                            |            |                    |
| MATERIAL<br>SEE NOTE   |   | FINISH<br>-                      | APPLICATION SPEC<br>114-5425                               | DRAWING NO<br>C=1971030 |   |       |   |       |   |       |   |        |   |                            |            |                    |
|  |   | WEIGHT<br>0                      | RESTRICTED TO<br>-   |                         |   |       |   |       |   |       |   |        |   |                            |            |                    |
|  |   | CUSTOMER DRAWING                 | SCALE<br>4:1   | SHEET<br>1 of 3         |   |       |   |       |   |       |   |        |   |                            |            |                    |
|  |   |                                  | REV<br>E2  |                         |   |       |   |       |   |       |   |        |   |                            |            |                    |

THIS DRAWING IS UNPUBLISHED. RELEASED FOR PUBLICATION  
 © COPYRIGHT - TE Connectivity ALL RIGHTS RESERVED.

| REVISIONS |     |             |      |      |
|-----------|-----|-------------|------|------|
| P         | LTR | DESCRIPTION | DATE | APVD |
| -         | -   | SEE SHEET 1 | -    | -    |

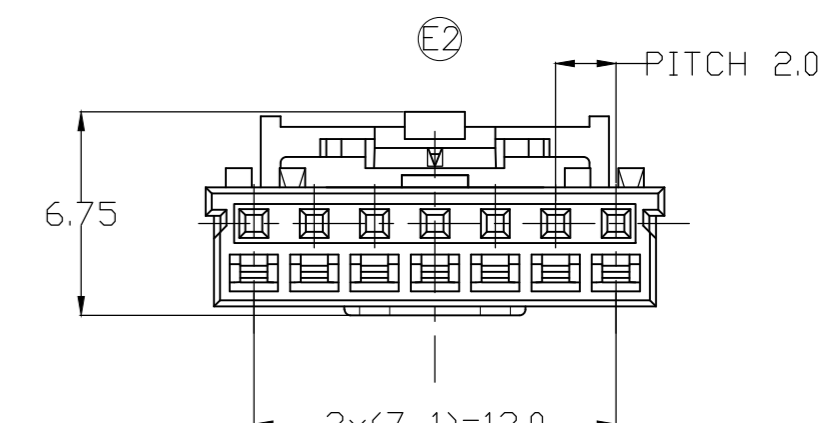
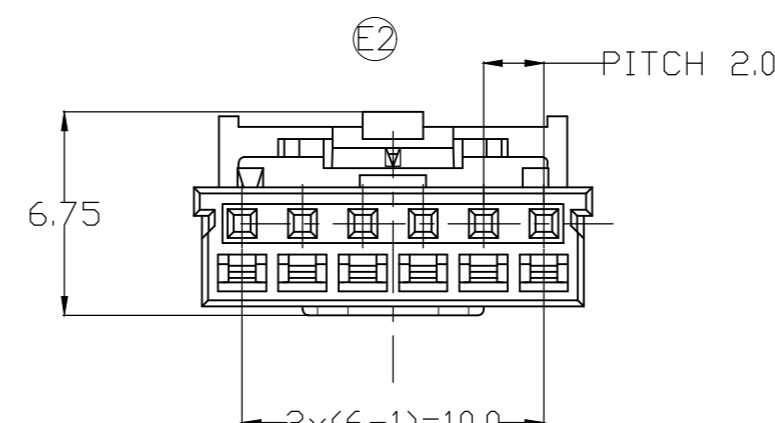
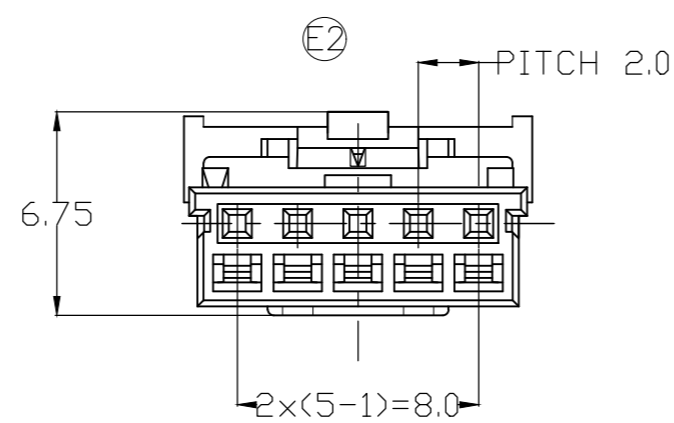
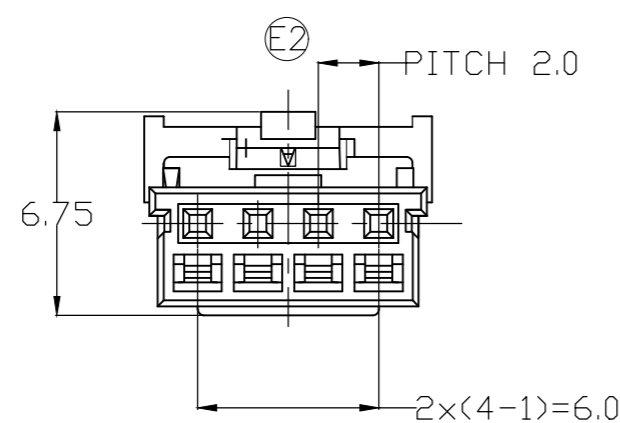
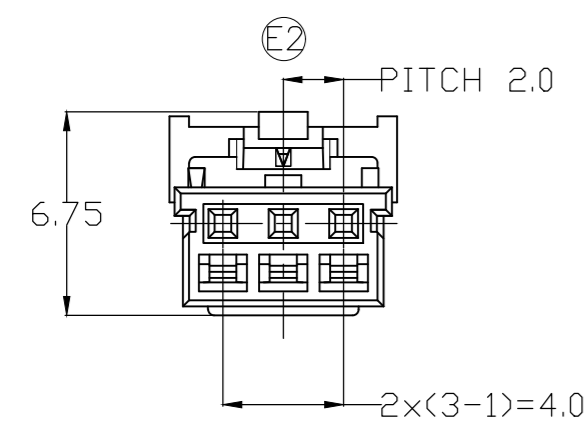
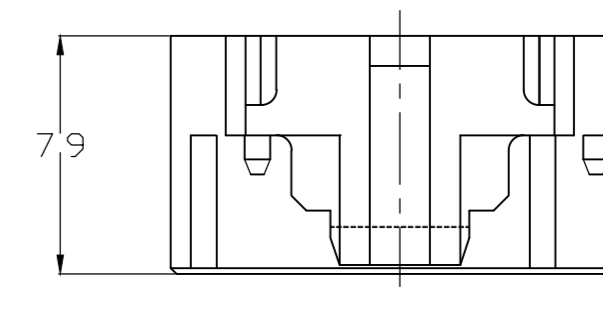
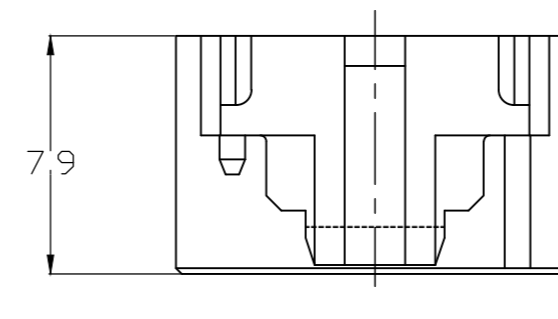
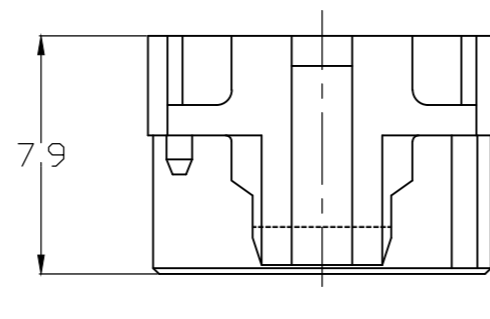
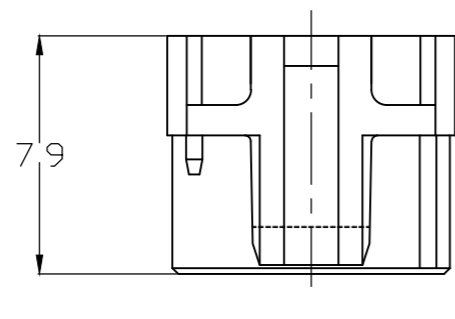
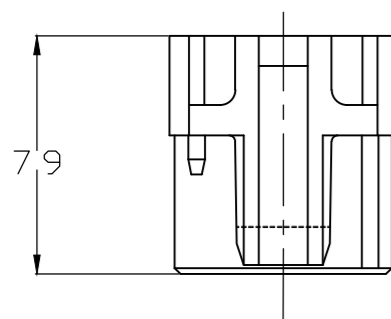
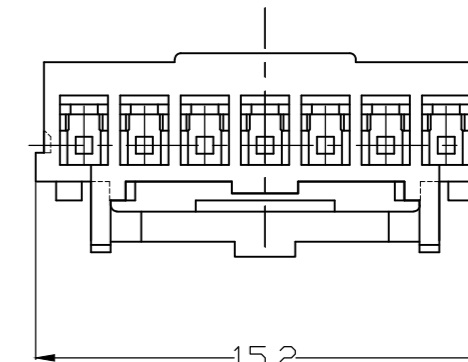
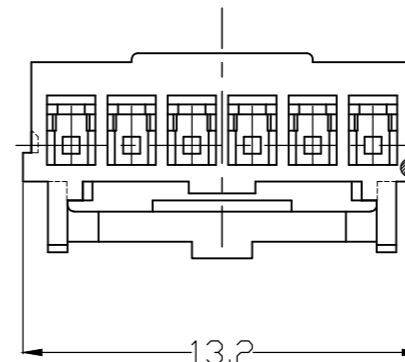
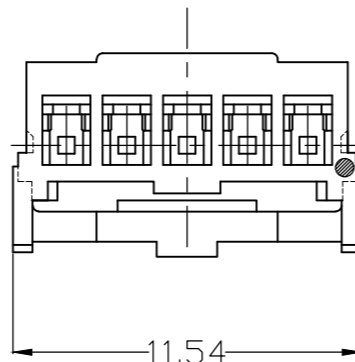
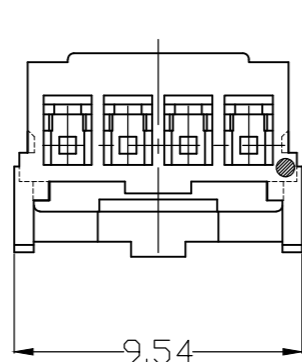
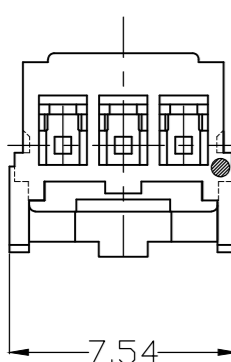
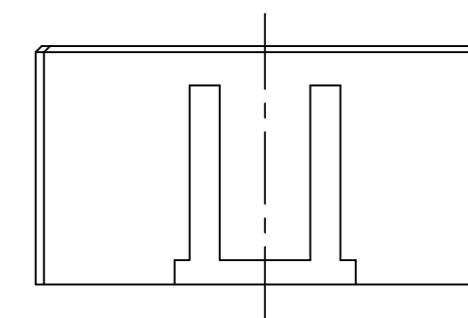
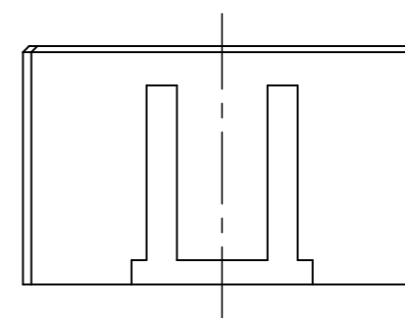
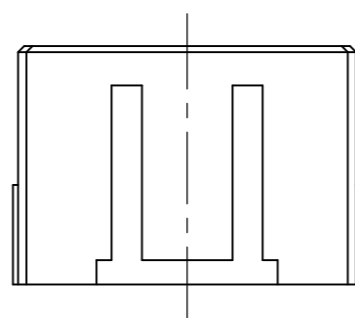
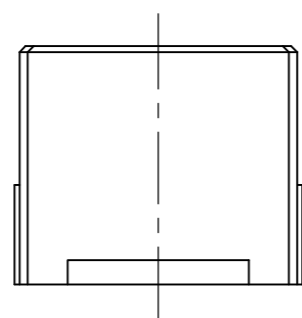
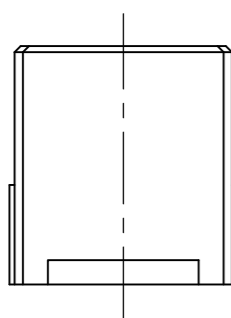
(3 POS.)

(4 POS.)

(5 POS.)

(6 POS.)

(7 POS.)



|   |  |                                  |   |                    |                          |
|---|--|----------------------------------|---|--------------------|--------------------------|
| THIS DRAWING IS A CONTROLLED DOCUMENT.  |  | DWN<br>Liu Jimmy<br>11JUN2008    | TE Connectivity   |                    |                          |
| DIMENSIONS:<br>mm   |  | CHK<br>Wu Hapye<br>11JUN2008     |   |                    |                          |
|   |  | APVD<br>Zhou Julian<br>11JUN2008 | NAME<br>Grace Inertia Connector 2.0 EV Series<br>Plug Housing |                    |                          |
| TOLERANCES UNLESS OTHERWISE SPECIFIED:<br>0 PLC ±<br>1 PLC ±<br>2 PLC ±<br>3 PLC ±<br>4 PLC ±<br>ANGLES ± |  | PRODUCT SPEC<br>108-106001       | SIZE<br>A2  | CAGE CODE<br>00779 | DRAWING NO.<br>C-1971030 |
| MATERIAL<br>-   |  | FINISH<br>-                      | WEIGHT<br>-   | RESTRICTED TO<br>- |                          |
| CUSTOMER DRAWING  |  |                                  | SCALE<br>4:1  | SHEET<br>2 of 3    | REV<br>E2                |

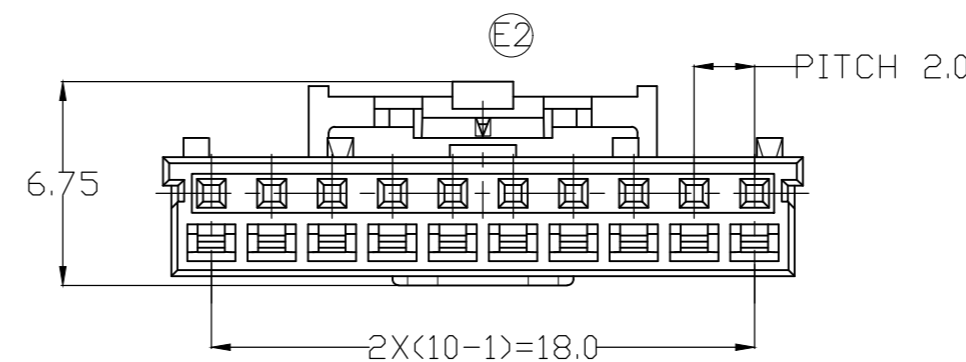
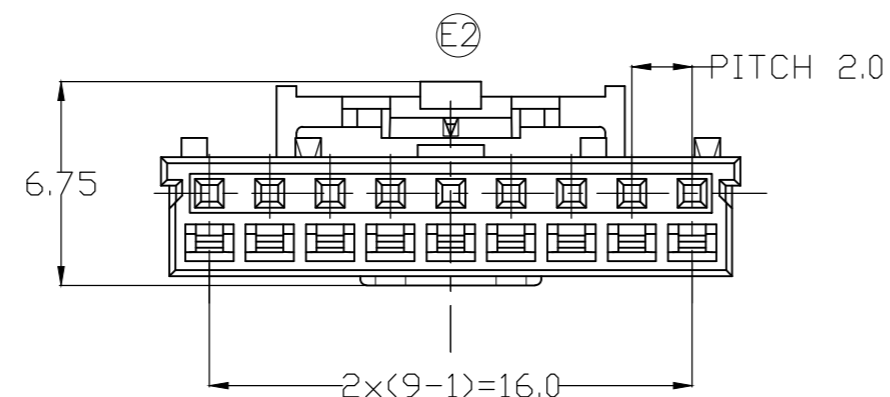
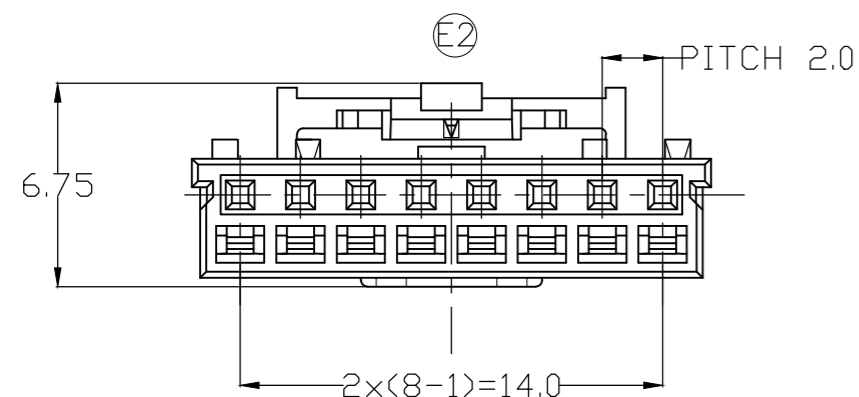
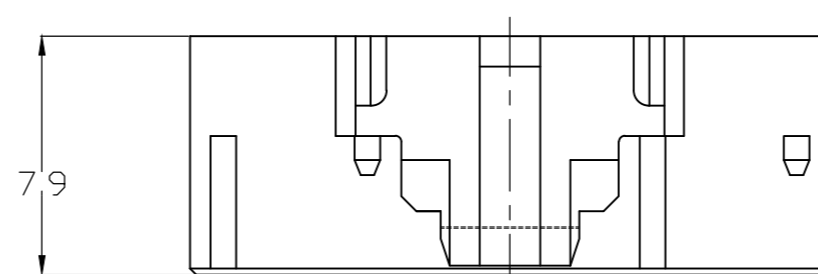
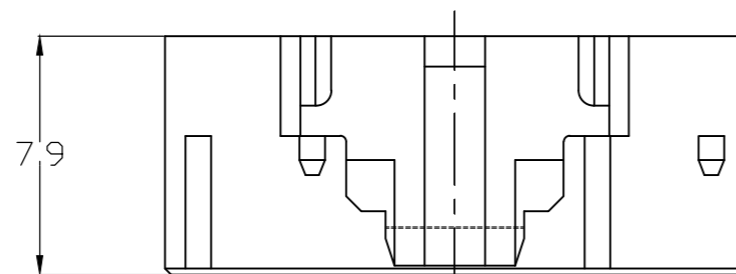
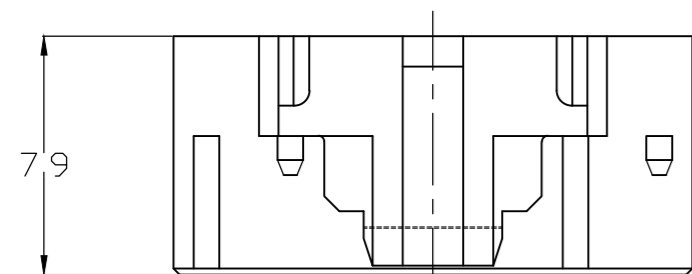
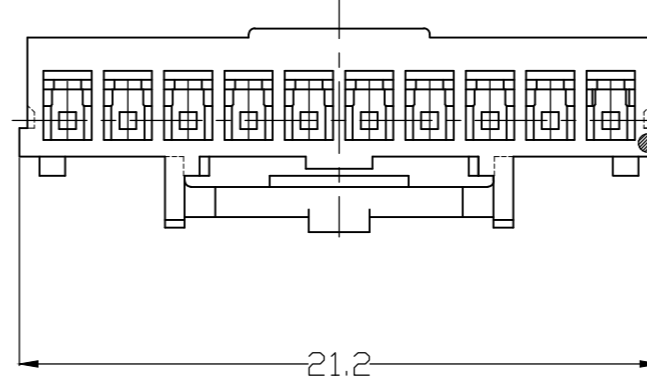
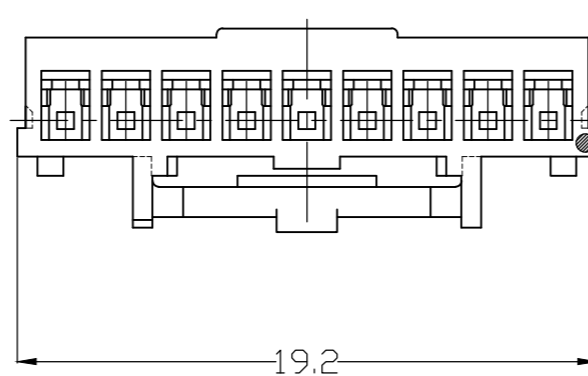
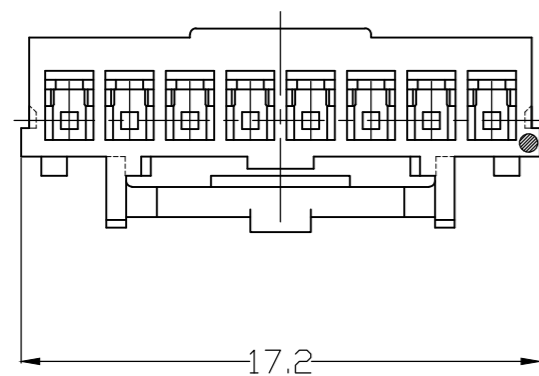
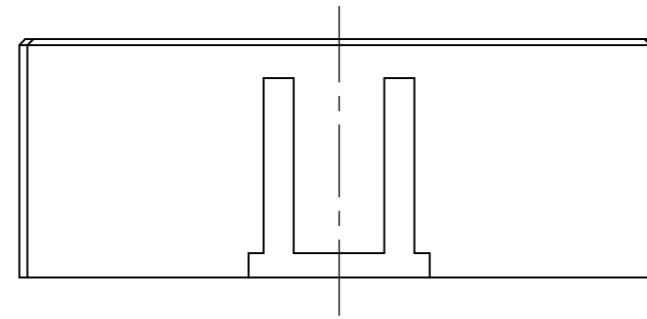
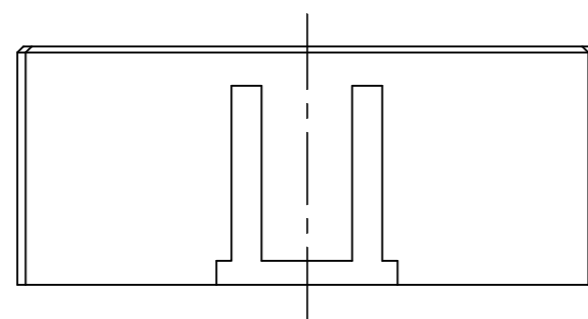
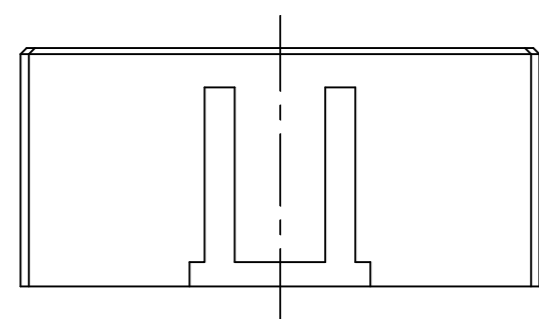
THIS DRAWING IS UNPUBLISHED. RELEASED FOR PUBLICATION  
 © COPYRIGHT - TE Connectivity ALL RIGHTS RESERVED.

| REVISIONS |     |             |      |     |      |
|-----------|-----|-------------|------|-----|------|
| P         | LTR | DESCRIPTION | DATE | DWN | APVD |
| -         | -   | SEE SHEET 1 | -    | -   | -    |

(8 POS.)

(9 POS.)

(10 POS.)



|                              |          |         |      |             |
|------------------------------|----------|---------|------|-------------|
| 3-1971032-1                  | D        | YELLOW  | 10   | 3-1971030-1 |
| 2-1971032-1                  | C        | BLUE    |      | 2-1971030-1 |
| 1-1971032-1                  | B        | RED     |      | 1-1971030-1 |
| 1971032-1                    | A        | NATURAL |      | 1971030-1   |
| 3-1971032-9                  | D        | YELLOW  | 9    | 3-1971030-9 |
| 2-1971032-9                  | C        | BLUE    |      | 2-1971030-9 |
| 1-1971032-9                  | B        | RED     |      | 1-1971030-9 |
| 1971032-9                    | A        | NATURAL |      | 1971030-9   |
| 3-1971032-8                  | D        | YELLOW  | 8    | 3-1971030-8 |
| 2-1971032-8                  | C        | BLUE    |      | 2-1971030-8 |
| 1-1971032-8                  | B        | RED     |      | 1-1971030-8 |
| 1971032-8                    | A        | NATURAL |      | 1971030-8   |
| 3-1971032-7                  | D        | YELLOW  | 7    | 3-1971030-7 |
| 2-1971032-7                  | C        | BLUE    |      | 2-1971030-7 |
| 1-1971032-7                  | B        | RED     |      | 1-1971030-7 |
| 1971032-7                    | A        | NATURAL |      | 1971030-7   |
| 3-1971032-6                  | D        | YELLOW  | 6    | 3-1971030-6 |
| 2-1971032-6                  | C        | BLUE    |      | 2-1971030-6 |
| 1-1971032-6                  | B        | RED     |      | 1-1971030-6 |
| 1971032-6                    | A        | NATURAL |      | 1971030-6   |
| 4-1971032-5                  | E        | BLACK   | 5    | 4-1971030-5 |
| 3-1971032-5                  | D        | YELLOW  |      | 3-1971030-5 |
| 2-1971032-5                  | C        | BLUE    |      | 2-1971030-5 |
| 1-1971032-5                  | B        | RED     |      | 1-1971030-5 |
| 1971032-5                    | A        | NATURAL |      | 1971030-5   |
| 3-1971032-4                  | D        | YELLOW  | 4    | 3-1971030-4 |
| 2-1971032-4                  | C        | BLUE    |      | 2-1971030-4 |
| 1-1971032-4                  | B        | RED     |      | 1-1971030-4 |
| 1971032-4                    | A        | NATURAL |      | 1971030-4   |
| 3-1971032-3                  | D        | YELLOW  | 3    | 3-1971030-3 |
| 2-1971032-3                  | C        | BLUE    |      | 2-1971030-3 |
| 1-1971032-3                  | B        | RED     |      | 1-1971030-3 |
| 1971032-3                    | A        | NATURAL |      | 1971030-3   |
| 4-1971032-2                  | E        | BLACK   | 2    | 4-1971030-2 |
| 3-1971032-2                  | D        | YELLOW  |      | 3-1971030-2 |
| 2-1971032-2                  | C        | BLUE    |      | 2-1971030-2 |
| 1-1971032-2                  | B        | RED     |      | 1-1971030-2 |
| 1971032-2                    | A        | NATURAL |      | 1971030-2   |
| MATING CONNECTOR PART NUMBER | KEY TYPE | COLOR   | POS. | PART NUMBER |

THIS DRAWING IS A CONTROLLED DOCUMENT.

DWN Liu Jimmy 11JUN2008  
 CHK Wu Sam 11JUN2008  
 APVD Zhou Julian 11JUN2008

TE Connectivity

Grace Inertia Connector 2.0 EV Series Plug Housing

108-106001

114-5425

SIZE A2 CAGE CODE 00779 DRAWING NO. C-1971030 RESTRICTED TO -

CUSTOMER DRAWING SCALE 4:1 SHEET 3 of 3 REV E2

| DIMENSIONS:       | TOLERANCES UNLESS OTHERWISE SPECIFIED: |
|-------------------|--|
| mm                | 0 PLC ±                                |
|                   | 1 PLC ±                                |
|                   | 2 PLC ±                                |
|                   | 3 PLC ±                                |
|                   | 4 PLC ±                                |
|                   | ANGLES ±                               |
| MATERIAL SEE NOTE | FINISH -                               |

## X-ON Electronics

Largest Supplier of Electrical and Electronic Components

*Click to view similar products for [Headers & Wire Housings](#) category:*

*Click to view products by [TE Connectivity](#) manufacturer:*

Other Similar products are found below :

[892-18-020-10-001101](#) [58102-G61-06LF](#) [582553-1](#) [0009485154](#) [009176003701906](#) [0050291907](#) [LY20-4P-DT1-P1E-BR](#) [02.125.8002.8](#)  
[609-3404](#) [61062-3](#) [61082-181009](#) [622-3653LF](#) [63453-116](#) [636-1030](#) [636-1427](#) [636-3427](#) [636-4007](#) [641938-9](#) [641991-4](#) [644827-2](#) [65817-](#)  
[010LF](#) [65817-015LF](#) [65863-015LF](#) [66207-023LF](#) [67095-007LF](#) [67601157](#) [68645-018](#) [68648-049](#) [70.362.1628.0](#) [70-4210](#) [70-4226B](#) [70-](#)  
[4853B](#) [707-5020](#) [707-5028](#) [71.350.2428.0](#) [71918-208LF](#) [71961-016LF](#) [733-134](#) [733-162](#) [754199-000](#) [760-3052](#) [787-8014-00](#) [79531-3000](#)  
[FCN-360C032-B](#) [FCN-367T-T012/H](#) [FCN-723D010/2](#) [80.063.4001.1](#) [800-90-001-10-001000](#) [800-90-010-10-002000](#) [801-43-002-10-013000](#)