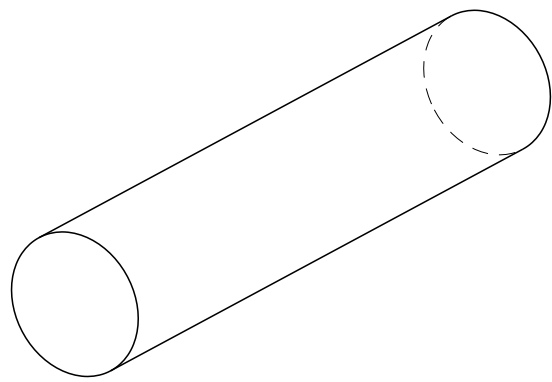
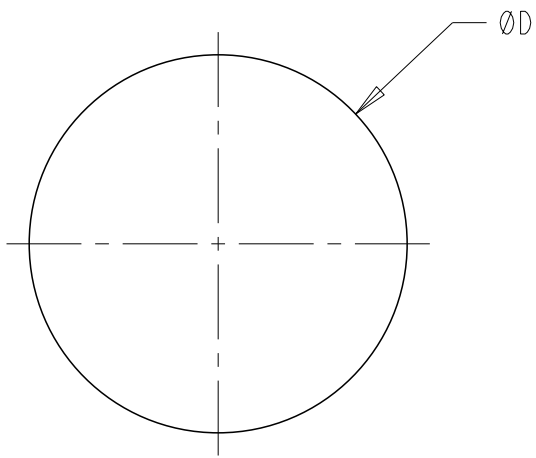


REVISIONS					
P	LTR	DESCRIPTION	DATE	DWN	APVD
	A	NEW DRAWING	05MAY2022	BDA	DH
	AI	NEW PART NUMBERS ADDED	16JUN2022	BDA	DH

GENERAL TOLERANCES:
 0 - 2mm = ±0.1mm
 2.1mm - 5mm = ±0.15mm
 5.1mm - 9mm = ±0.2mm

MATERIAL SPECIFIC DATA TABLE

	SNG	SSA	FNG	FSA
RECOMMENDED OPERATING TEMPERATURE RANGE (°C)	-55 to 160	-55 to 160	-55 to 160	-55 to 160
SPECIFIC GRAVITY ± 13%	2.000	2.000	2.200	2.000
SHORE A HARDNESS ± 7	65	65	65	70
MAXIMUM VOLUME RESISTIVITY (Ω.CM)	0.05	0.008	0.05	0.012



ISOMETRIC VIEW (NTS)

LIGHT GREEN	2.0	FLUROSILICONE SILVER ALUMINIUM	1201-FSA-0020	2418215-1	1201-FSA-0020-1	2420751-1
LIGHT GREEN	1.8	FLUROSILICONE SILVER ALUMINIUM	1201-FSA-0018	2418214-1	1201-FSA-0018-1	2420750-1
LIGHT GREEN	1.6	FLUROSILICONE SILVER ALUMINIUM	1201-FSA-0016	2418213-1	1201-FSA-0016-1	2420749-1
LIGHT GREEN	1.0	FLUROSILICONE SILVER ALUMINIUM	1201-FSA-0010	2418121-1	1201-FSA-0010-1	2420748-1
DARK GREEN	2.0	FLUROSILICONE NICKEL GRAPHITE	1201-FNG-0020	2418212-1	1201-FNG-0020-1	2420747-1
DARK GREEN	1.8	FLUROSILICONE NICKEL GRAPHITE	1201-FNG-0018	2418211-1	1201-FNG-0018-1	2420746-1
DARK GREEN	1.6	FLUROSILICONE NICKEL GRAPHITE	1201-FNG-0016	2418210-1	1201-FNG-0016-1	2420745-1
DARK GREEN	1.0	FLUROSILICONE NICKEL GRAPHITE	1201-FNG-0010	2418116-1	1201-FNG-0010-1	2420744-1
BEIGE	2.0	SILICONE SILVER ALUMINIUM	1201-SSA-0020	2418193-1	1201-SSA-0020-1	2420737-1
BEIGE	1.8	SILICONE SILVER ALUMINIUM	1201-SSA-0018	2418096-1	1201-SSA-0018-1	2420736-1
BEIGE	1.6	SILICONE SILVER ALUMINIUM	1201-SSA-0016	2418095-1	1201-SSA-0016-1	2420735-1
BEIGE	1.0	SILICONE SILVER ALUMINIUM	1201-SSA-0010	2418094-1	1201-SSA-0010-1	2420734-1
DARK GREY	2.0	SILICONE NICKEL GRAPHITE	1201-SNG-0020	2418093-1	1201-SNG-0020-1	2420733-1
DARK GREY	1.8	SILICONE NICKEL GRAPHITE	1201-SNG-0018	2418092-1	1201-SNG-0018-1	2420732-1
DARK GREY	1.6	SILICONE NICKEL GRAPHITE	1201-SNG-0016	2418091-1	1201-SNG-0016-1	2420731-1
DARK GREY	1.0	SILICONE NICKEL GRAPHITE	1201-SNG-0010	2418192-1	1201-SNG-0010-1	2420730-1
COLOUR	ØD	MATERIAL	10 METER LENGTH ALIAS PART NUMBER	10 METER LENGTH PART NUMBER	1 METER LENGTH ALIAS PART NUMBER	1 METER LENGTH PART NUMBER

THIS DRAWING IS A CONTROLLED DOCUMENT.

DWN: 05MAY2022 BASAVARAJA D.A.
 CHK: 05MAY2022 B. SELVAPANDIAN
 APVD: 05MAY2022 D. HEMMINGS

STE TE Connectivity

NAME: 1201-ECE EXTRUDED CORD-SERIES

PRODUCT SPEC: -
 APPLICATION SPEC: -
 WEIGHT: -

SIZE: A2 CAGE CODE: 00779 DRAWING NO: 1201-ECE-CORD RESTRICTED TO: -

MATERIAL: SEE TABLE TOLERANCES UNLESS OTHERWISE SPECIFIED:
 0 PLC ±
 1 PLC ±
 2 PLC ±
 3 PLC ±
 4 PLC ±
 ANGLES ±
 FINISH -

CUSTOMER DRAWING SCALE: 50:1 SHEET 1 OF 1 REV: AI

Printed on 21 Jun 2022 18:32 (India Standard Time) from TE255172

X-ON Electronics

Largest Supplier of Electrical and Electronic Components

Click to view similar products for [EMI Gaskets, Sheets, Absorbers & Shielding](#) category:

Click to view products by [TE Connectivity](#) manufacturer:

Other Similar products are found below :

[8101010140](#) [1194-14"X36YD](#) [1245-34"X18YD](#) [1267](#) [1345-3/8x18yrd](#) [1380-2"X8"](#) [1554907-1](#) [2320002000](#) [25-78FS-BD-24](#) [SG293037DS](#)
[ST005PCN50](#) [3070-500-STD](#) [46739-24](#) [55005107](#) [46J5N02020.NN00](#) [10-40450-28](#) [1126X1"](#) [1170-3/4X18YDS](#) [1170-7.7x10](#) [1183-](#)
[12"X18YD](#) [6-34T-BD-0.315](#) [SG125187D-24](#) [SG125250R-24](#) [SG187375R-24](#) [SG284050DS](#) [KIT TECH CLIP](#) [10-40450-28S](#) [1245](#)
[3013350A](#) [1267-1/2"x18yd](#) [46J8501020.NN00](#) [1170-1/4"x18yd](#) [AL-36FR-1x54.5](#) [3013310A](#) [1194X1"](#) [3020604](#) [3020705](#) [3031313](#) [260709](#)
[3021310](#) [0137131400](#) [46J5N03020.NN00](#) [30206025](#) [30395641](#) [3030403](#) [3690103020](#) [46X7503020.NN00](#) [46X7501020.NN00](#)
[46W5E02520.NN00](#) [302095032](#)