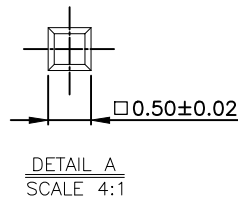
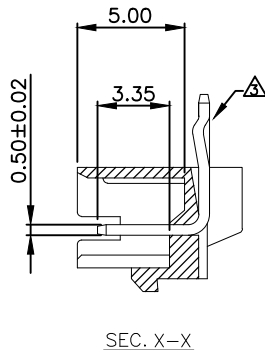
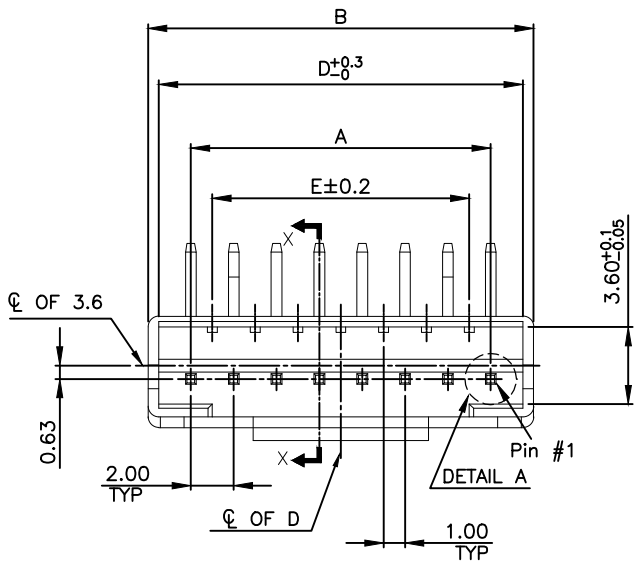


THIS DRAWING IS UNPUBLISHED. RELEASED FOR PUBLICATION
 © COPYRIGHT - BY - ALL RIGHTS RESERVED.

LOC	DIST	REVISIONS					
DW	-	P	LTR	DESCRIPTION	DATE	DWN	APVD
			A3	ECR-20-004159		07MAY2020	T.Q

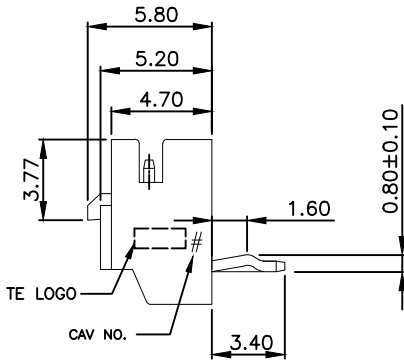
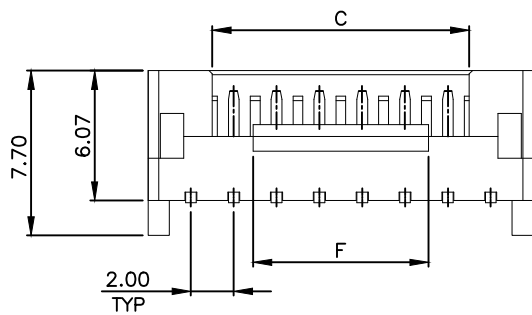
NOTE:

- MATERIAL:
HSG: NYLON 66, UL 94V-0. COLOR:NATURAL
CONTACTS: BRONZE.
- FINISH:
CONTACTS: 2.032 μ m [80 μ "] MIN. BRIGHT-TIN ON OVER ALL
0.762 μ m [30 μ "] MIN. NICKEL UNDERPLATED
- CONTACT SOLDER TAIL KINK DIRECTION (BOARD LOCK) SEE TABLE
- NON ACCUMULATIVE TOLERANCE
- WAVE SOLDER SPECIFICATION REFER TO 108-57788.

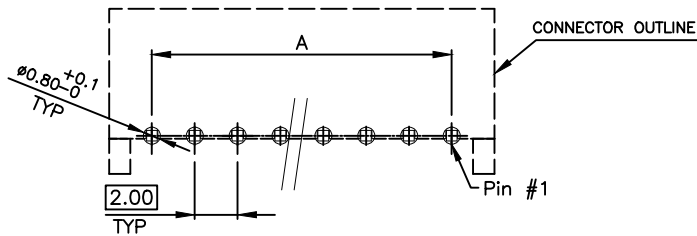


POS	1	2	3	4	5	6	7	8	9	10	11	12	13	14	15	16
2P	●	●														
3P	●	○	●													
4P	○	○	○	○												
5P	●	○	○	○	○	○										
6P	○	○	○	○	○	○	○									
7P	○	○	○	○	○	○	○	○								
8P	○	○	○	○	○	○	○	○	○							
9P	○	○	○	○	○	○	○	○	○	○						
10P	○	○	○	○	○	○	○	○	○	○	○					
11P	○	○	○	○	○	○	○	○	○	○	○	○				
12P	○	○	○	○	○	○	○	○	○	○	○	○	○			
13P	○	○	○	○	○	○	○	○	○	○	○	○	○	○		
14P	○	○	○	○	○	○	○	○	○	○	○	○	○	○	○	
15P	○	○	○	○	○	○	○	○	○	○	○	○	○	○	○	○
16P	○	○	○	○	○	○	○	○	○	○	○	○	○	○	○	○

● WITH LOCK KINK
○ WITHOUT LOCK KINK



OBSOLETE	-0.835	8.2	28.0	33.0	28.0±0.2	34.0	30.0	16P	1-2041145-6
OBSOLETE	-0.785	8.2	26.0	31.0	26.0±0.2	32.0	28.0	15P	1-2041145-5
	0.735	8.2	24.0	29.0	24.0±0.2	30.0	26.0	14P	1-2041145-4
OBSOLETE	-0.685	8.2	22.0	27.0	22.0±0.2	28.0	24.0	13P	1-2041145-3
	0.635	8.2	20.0	25.0	20.0±0.2	26.0	22.0	12P	1-2041145-2
OBSOLETE	-0.585	8.2	18.0	23.0	18.0±0.2	24.0	20.0	11P	1-2041145-1
OBSOLETE	-0.54	8.2	16.0	21.0	16.0±0.2	22.0	18.0	10P	1-2041145-0
	0.49	8.2	14.0	19.0	14.0±0.2	20.0	16.0	9P	2041145-9
	0.44	8.2	12.0	17.0	12.0±0.2	18.0	14.0	8P	2041145-8
OBSOLETE	-0.40	8.2	10.0	15.0	10.0±0.2	16.0	12.0	7P	2041145-7
OBSOLETE	-0.37	4.0	8.0	13.0	8.0±0.2	14.0	10.0	6P	2041145-6
OBSOLETE	-0.32	4.0	6.0	11.0	6.0±0.2	12.0	8.0	5P	2041145-5
	0.26	4.0	4.0	9.0	4.0±0.2	10.0	6.0	4P	2041145-4
	0.20	2.0	2.0	7.0	2.0 ^{+0.08} _{-0.08}	8.0	4.0	3P	2041145-3
OBSOLETE	-0.14	2.0	/	5.0	2.0	6.0	2.0	2P	2041145-2



RECOMMENDER PCB LAYOUT
 TOLERANCE: ±0.05 (TOP VIEW)
 (PCB THK=1.0~1.6mm)

THIS DRAWING IS A CONTROLLED DOCUMENT.

DIMENSIONS:	TOLERANCES UNLESS OTHERWISE SPECIFIED:
MM	

0 PLC	± -
1 PLC	± 0.3
2 PLC	± 0.2
3 PLC	± 0.15
4 PLC	± 0.15
ANGLES	± 3'

MATERIAL SEE NOTE

FINISH SEE NOTE

DWN	J. LAI	300CT2009
CHK	S. CHIEN	300CT2009
APVD	W. KODAMA	300CT2009
PRODUCT SPEC	108-57788	
APPLICATION SPEC		
WEIGHT	SEE TABLE	
CUSTOMER DRAWING		



HPI 2.0mm HEADER CONNECTOR,
R/A, DIP TYPE

SIZE	CAGE CODE	DRAWING NO	RESTRICTED TO
A3	00779	C-2041145	-
SCALE	SHEET	1 of 2	REV A3

THIS DRAWING IS UNPUBLISHED.

RELEASED FOR PUBLICATION

ALL RIGHTS RESERVED.

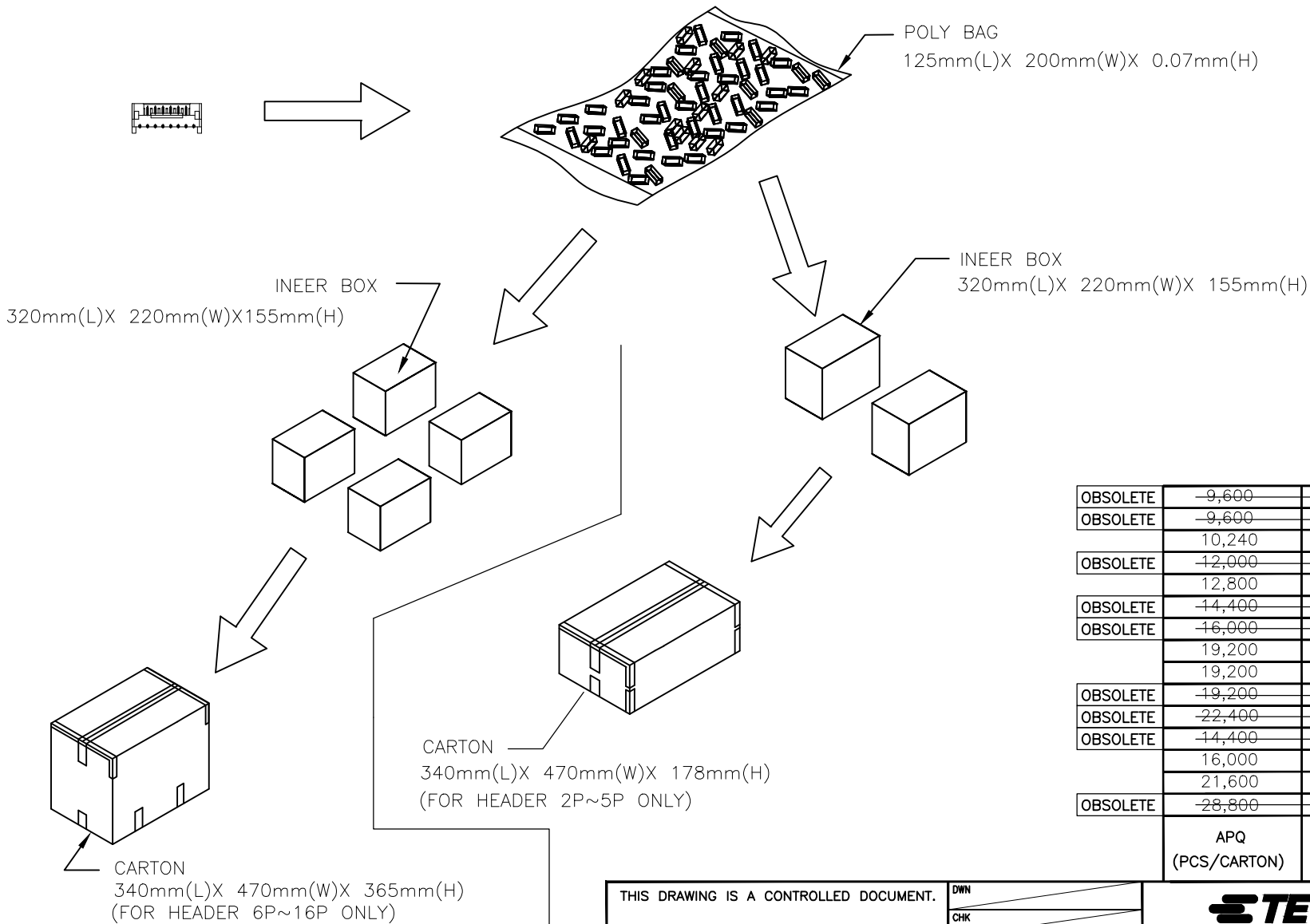
© COPYRIGHT BY

LOC DW

DIST

REVISIONS

P	LTR	DESCRIPTION	DATE	DWN	APVD
		SEE SHEET 1.			



	APQ (PCS/CARTON)	PPQ (PCS/BAG)	CIRCUITS	PART NUMBER
OBSOLETE	9,600	160	16P	1-2041145-6
OBSOLETE	9,600	160	15P	1-2041145-5
OBSOLETE	10,240	160	14P	1-2041145-4
OBSOLETE	12,000	200	13P	1-2041145-3
OBSOLETE	12,800	200	12P	1-2041145-2
OBSOLETE	14,400	200	11P	1-2041145-1
OBSOLETE	16,000	250	10P	1-2041145-0
	19,200	300	9P	2041145-9
	19,200	300	8P	2041145-8
OBSOLETE	19,200	300	7P	2041145-7
OBSOLETE	22,400	350	6P	2041145-6
OBSOLETE	14,400	450	5P	2041145-5
	16,000	500	4P	2041145-4
	21,600	600	3P	2041145-3
OBSOLETE	28,800	800	2P	2041145-2

THIS DRAWING IS A CONTROLLED DOCUMENT.

TE Connectivity

HPI 2.0mm HEADER CONNECTOR, R/A, DIP TYPE

NAME	SIZE	CAGE CODE	DRAWING NO	RESTRICTED TO
	A3	00779	C=2041145	

CUSTOMER DRAWING SCALE - SHEET 2 OF 2 REV A3

X-ON Electronics

Largest Supplier of Electrical and Electronic Components

Click to view similar products for [Headers & Wire Housings](#) category:

Click to view products by [TE Connectivity](#) manufacturer:

Other Similar products are found below :

[892-18-020-10-001101](#) [58102-G61-06LF](#) [582553-1](#) [0009485154](#) [009176003701906](#) [0050291907](#) [LY20-4P-DT1-P1E-BR](#) [02.125.8002.8](#)
[609-3404](#) [61062-3](#) [61082-181009](#) [622-3653LF](#) [63453-116](#) [636-1030](#) [636-1427](#) [636-3427](#) [636-4007](#) [641938-9](#) [641991-4](#) [644827-2](#) [65817-](#)
[010LF](#) [65817-015LF](#) [65863-015LF](#) [66207-023LF](#) [67095-007LF](#) [67601157](#) [68645-018](#) [68648-049](#) [70.362.1628.0](#) [70-4210](#) [70-4226B](#) [70-](#)
[4853B](#) [707-5020](#) [707-5028](#) [71.350.2428.0](#) [71918-208LF](#) [71961-016LF](#) [733-134](#) [733-162](#) [754199-000](#) [760-3052](#) [79531-3000](#) [FCN-](#)
[360C032-B](#) [FCN-367T-T012/H](#) [FCN-723D010/2](#) [80.063.4001.1](#) [800-90-010-10-002000](#) [801-43-002-10-013000](#) [801-43-006-10-002000](#)
[801-93-011-10-001000](#)