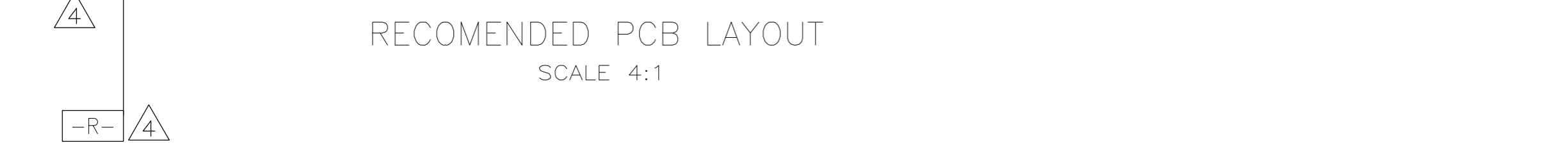
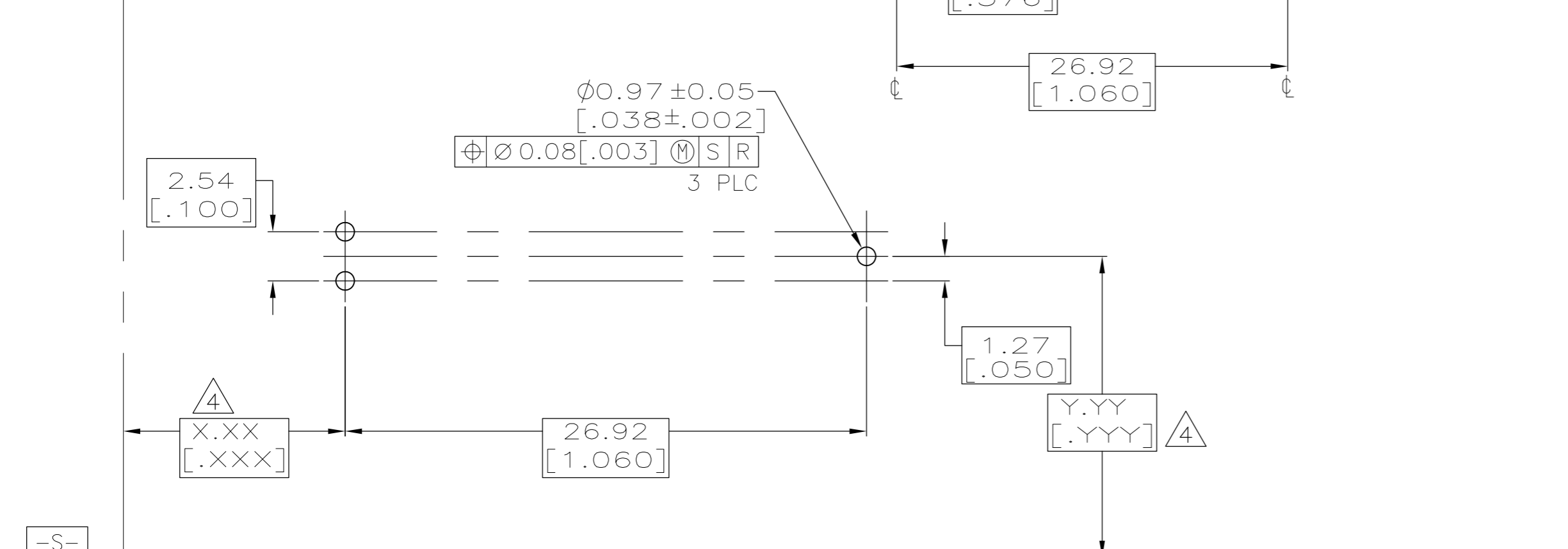
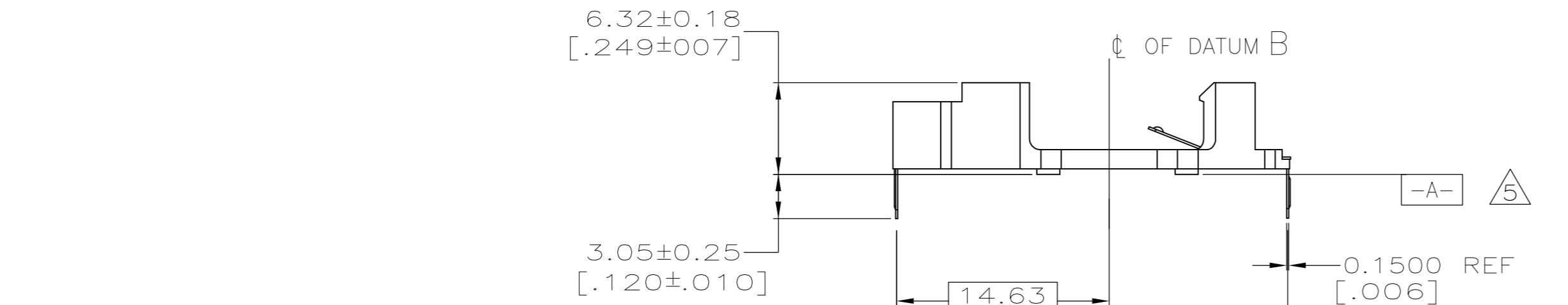
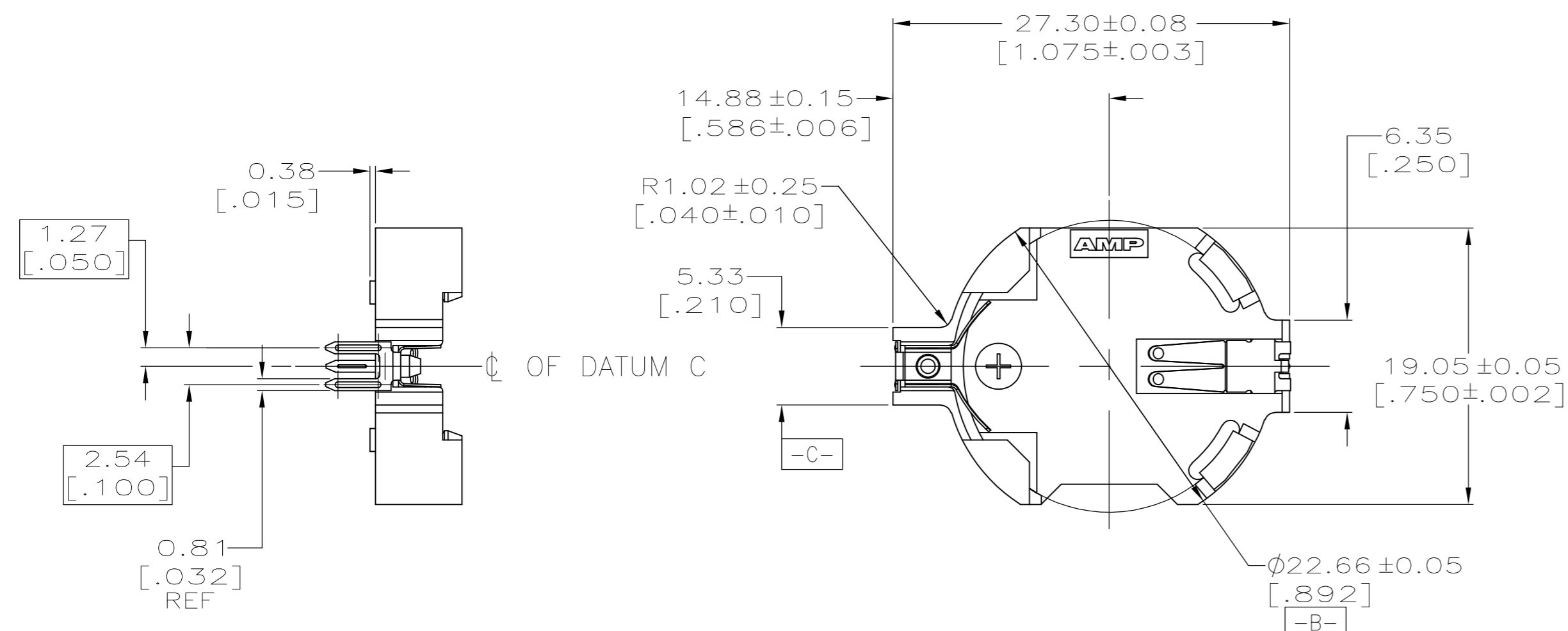
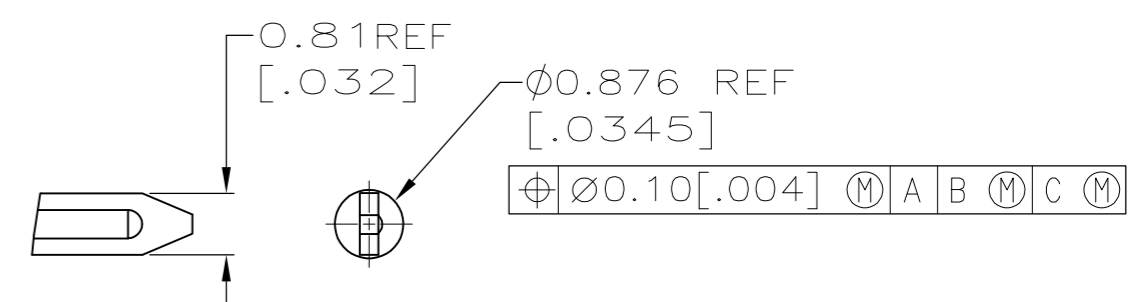
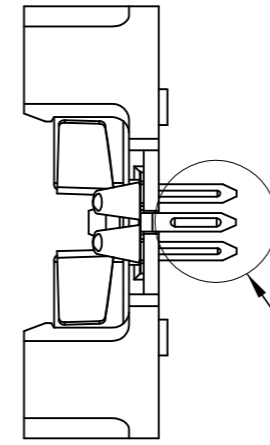


THIS DRAWING IS UNPUBLISHED. RELEASED FOR PUBLICATION
 © COPYRIGHT - By - ALL RIGHTS RESERVED.

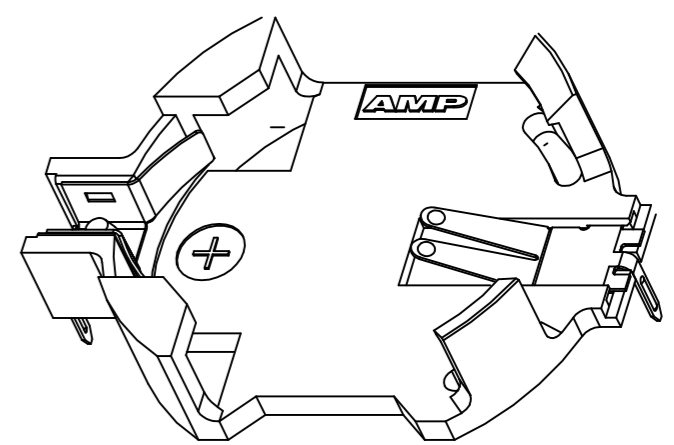
LOC		DIST		REVISIONS			
P	LTR	DESCRIPTION		DATE	DWN	APVD	
GP	00	H		REVISED PER ECR-13-000366	10JAN13	E.L	X.X



- 1 HOUSING MATERIAL: PBT, GLASS FILLED, UL-94V-0 FLAME CLASS RATING. COLOR: BLACK.
- 2 CONTACTS: PHOSPHOR BRONZE, PRE TIN COATED 0.0015-0.0040 [0.00059-.000157] THICK.
- 3. CONNECTOR ACCEPTS BATTERY #CR2032.
- 4 DATUMS AND BASIC DIMENSIONS ESTABLISHED BY CUSTOMER.
- 5 REFERENCE BASE OF FOUR STANDOFFS FOR DATUM A.
- 6 CONTACTS: PHOSPHOR BRONZE, 0.03µm[1.2µMCH] MIN GOLD AT MATING INTERFACE AREA, 2-5µm[80-200µMCH] TIN AT SOLDER AREA, BOTH OVER 1.3µm[50µMCH] NICKEL MIN ON ENTIRE SURFACE.
- 7 OBSOLETE PARTS: OBSOLETE CIS STREAMLINING PER D.RENAUD/D.SINISI
- 8 HOUSING MATERIAL: LCP, HIGH TEMPERATURE, UL-94V-0 COLOR: BLACK.



DETAIL J
SCALE 10:1



△ OBSOLETE	— TRAY	120591-4	△ 2	△ 8
△ OBSOLETE	— TRAY	120591-3	△ 1	△ 6
△ OBSOLETE	— TUBE	120591-2	△ 1	△ 2
	TRAY	120591-1	△ 1	△ 2
	PACKAGING			PART NUMBER

THIS DRAWING IS A CONTROLLED DOCUMENT.		DWN	J. REED	8/26/97	 TE Connectivity	ASSEMBLY, BATTERY CONNECTOR, TOP LOAD		
DIMENSIONS: mm		CHK	V. RUMINSKI	8/26/97		NAME		
TOLERANCES UNLESS OTHERWISE SPECIFIED:		APVD	V. RUMINSKI	8/26/97		PRODUCT SPEC	108-1691	
0 PLC ± -		APPLICATION SPEC		SIZE		CAGE CODE	DRAWING NO	
1 PLC ± -		MATERIAL		WEIGHT		A2	00779	
2 PLC ± 0.13 [.005]		FINISH		CUSTOMER DRAWING		SCALE 3:1		
3 PLC ± -				SHEET		1 OF 1		
4 PLC ± -				REV		H		
ANGLES ± 0° 30'								

X-ON Electronics

Largest Supplier of Electrical and Electronic Components

Click to view similar products for [Coin Cell Battery Holders](#) category:

Click to view products by [TE Connectivity](#) manufacturer:

Other Similar products are found below :

[PDSN-11-D](#) [1058](#) [1052](#) [799-2007](#) [BH44AAB](#) [BH48DL](#) [BH8000](#) [BS-6-1](#) [79573231](#) [1131](#) [101](#) [3035](#) [1025](#) [1027](#) [103](#) [1059](#) [1060](#) [1063](#)
[1065](#) [1068](#) [1093](#) [D3](#) [46400000](#) [BC-0403](#) [BH-121-1B](#) [BH-1/2AA-2A](#) [BH-131A](#) [BH-3101A](#) [BH-3103B](#) [BH-311-1A](#) [BH-311-1D](#) [BH-321-](#)
[1A](#) [BH-321-1B](#) [BH-321-1D](#) [BH-331-3D](#) [BH-333A](#) [BH-341-1P](#) [BH-342-1A](#) [BH-351A](#) [BH-362B](#) [BH-383A](#) [BH-421A](#) [BH-422A](#) [BH-425A](#)
[BH-431-1B](#) [BH-463A](#) [BH-511A](#) [BHC-18650-1P](#) [46300000](#) [46600000](#)