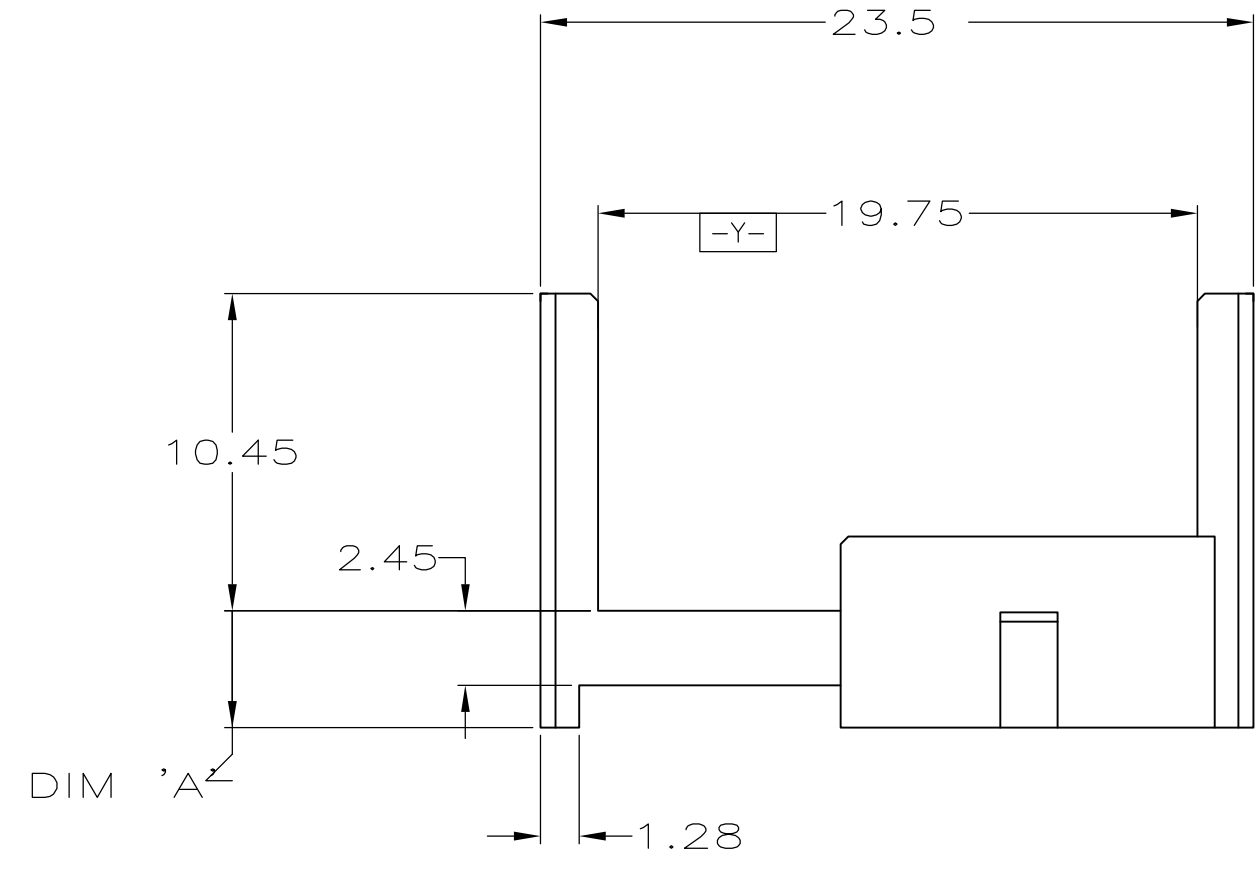
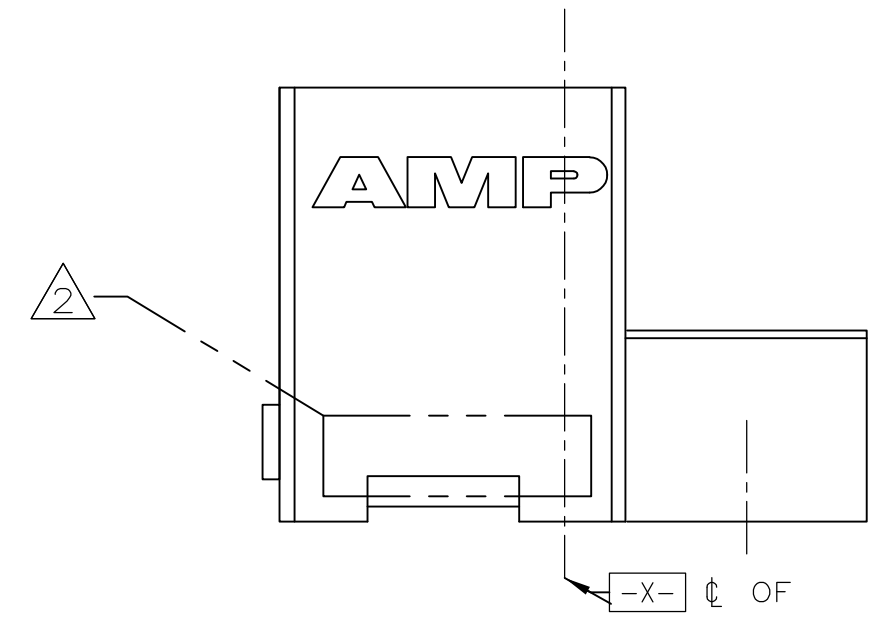
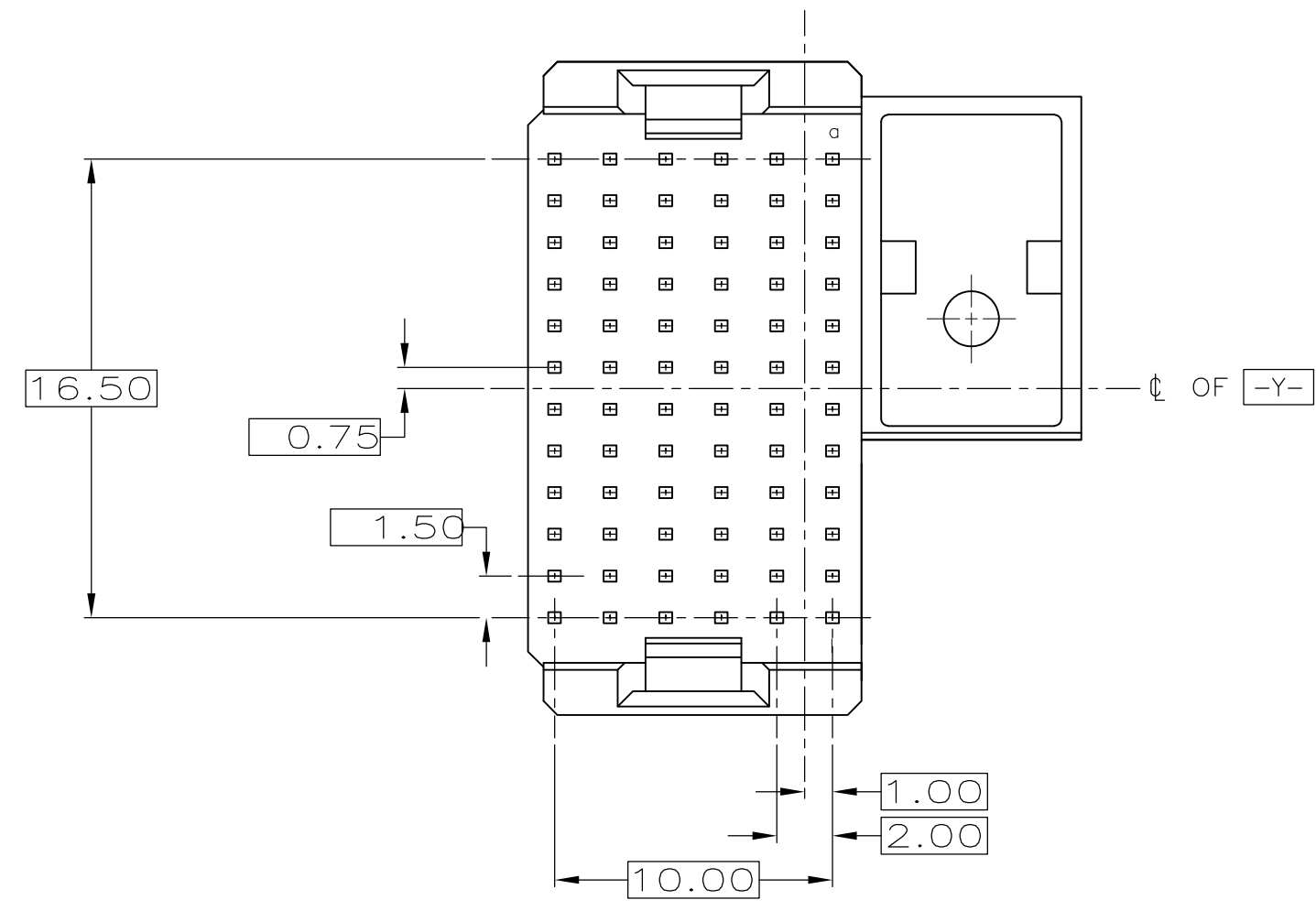


THIS DRAWING IS UNPUBLISHED. RELEASED FOR PUBLICATION .19
 (C) COPYRIGHT 19 BY AMP INCORPORATED. ALL RIGHTS RESERVED.

LOC	DIST	REVISIONS			
P	LTR	DESCRIPTION	DATE	DWN	APVD
AD	47	B	REVISED PER 0U1B-0050-00	02MAR00	DKS HWA
		B1	REVISED PER ECO-09-020689	02SEP09	KK AEG
		C	ECR-10-019054	15SEP10	DP MQW



- ① MATERIAL: 30% GLASS-FILLED POLYESTER.
- ② CONNECTOR MARKED WITH PART NUMBER AND DATE CODE.
- ③ RECOMMENDED MIDPLANE THICKNESS TO MAINTAIN STANDARD THREE-LEVEL SEQUENCING.
- ④ OBSOLETE PARTS: OBSOLETE CIS STREAMLINING PER D.RENAUD/D.SINISI

④ OBSOLETE	3.75	4.00	120647-7
	4.0	3.75	120647-6
④ OBSOLETE	4.25	3.5	120647-5
	4.5	3.25	120647-4
④ OBSOLETE	4.75	3.0	120647-3
	5.0	2.75	120647-2
	5.25	2.50	120647-1
	③	DIM "A"	PART NO

THIS DRAWING IS A CONTROLLED DOCUMENT.		DWN SK MICKIEVICZ 22APR97	AMP Incorporated	
DIMENSIONS: mm		CHK SK MICKIEVICZ 02NOV99	Harrisburg, PA 17105-3608	
TOLERANCES UNLESS OTHERWISE SPECIFIED: ±0.2		APVD HW ANDREWS 02NOV99	NAME MALE SHROUD HOUSING, RIGHT-HAND FEED-THROUGH MIDPLANE, UNLOADED 12-ROW, 72 POSN, GUIDE/KEY MODULE	
MATERIAL ①		PRODUCT SPEC	SIZE A2	CAGE CODE 00779
FINISH -		APPLICATION SPEC	DRAWING NO C-120647	RESTRICTED TO -
		WEIGHT -	SCALE 4:1	SHEET 1 OF 1
		CUSTOMER DRAWING	REV C	

120647

A

X-ON Electronics

Largest Supplier of Electrical and Electronic Components

Click to view similar products for [Hard Metric Connectors](#) category:

Click to view products by [TE Connectivity](#) manufacturer:

Other Similar products are found below :

[6345127-1](#) [646916-9](#) [6469658-1](#) [973108](#) [1-2000713-0](#) [1-2000713-2](#) [1-2000713-3](#) [1645343-1](#) [1645456-1](#) [1645594-1](#) [1645595-1](#) [1645601-1](#)
[1934822-1](#) [278071110010833](#) [1645179-1](#) [1645245-1](#) [1645457-1](#) [1645525-1](#) [1645570-1](#) [1645596-1](#) [17041102202](#) [1857470-1](#) [1934275-1](#)
[1934289-1](#) [1934759-1](#) [2000673-1](#) [2170292-2](#) [2-536642-6](#) [3-106015-1](#) [352188-1](#) [352629-1](#) [5120823-1](#) [5120899-1](#) [3-100145-0](#) [3-100147-0](#)
[3-100669-1](#) [3-106081-0](#) [HM2DK2368PLF](#) [5646530-1](#) [3-352049-0](#) [3-352069-0](#) [3-352115-0](#) [3-352638-0](#) [352189-1](#) [3-646357-0](#) [3-646487-0](#)
[3-646513-0](#) [104108](#) [106726-1](#) [114352](#)