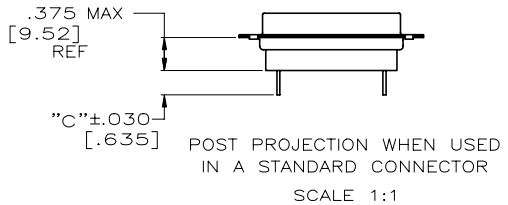
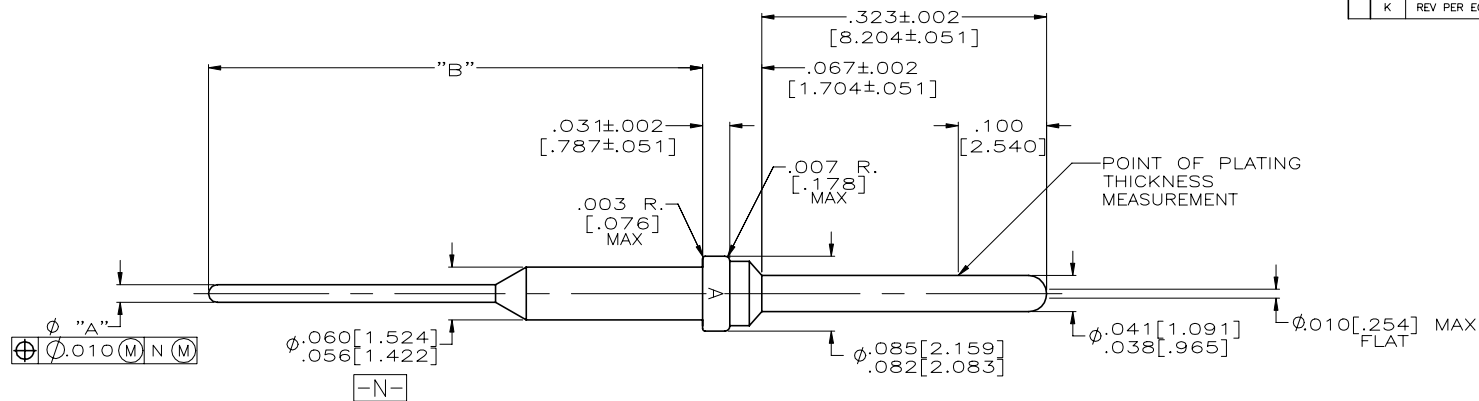


REVISIONS					
REV	DATE	BY	CHK	APPV	DESCRIPTION
K	2-2-21	CT	RL		REV PER ECO 20-017652



PRELIMINARY- NOT RELEASED FOR PRODUCTION

PRELIMINARY- NOT RELEASED FOR PRODUCTION

PRELIMINARY- NOT RELEASED FOR PRODUCTION

	DIM C	DIM B	DIM A	PART NUMBER
	.170 [4.32]	.400 [10.16]	.032/.028 [813/.7112]	2-212565-5
	.330 [8.38]	.560 [14.224]	.020/.016 [508/.406]	2-212565-3
	.330 [8.38]	.560 [14.224]	.0192/.0155 [4877/.3937]	2-212565-2
	.470 [11.94]	.700 [17.78]	.020/.016 [508/.406]	2-212565-1
	.330 [8.38]	.560 [14.224]	.020/.016 [508/.406]	1-212565-0
OBSOLETE	.161 [4.089]	.446 [11.328]	.042/.038 [1067/.965]	212565-9
OBSOLETE	.161 [4.089]	.446 [11.328]	.032/.028 [813/.7112]	212565-8
OBSOLETE	.161 [4.089]	.446 [11.328]	.026/.022 [660/.559]	212565-7
OBSOLETE	.130 [3.302]	.415 [10.541]	.042/.038 [1067/.965]	212565-6
OBSOLETE	.130 [3.302]	.415 [10.541]	.032/.028 [813/.7112]	212565-5
OBSOLETE	.130 [3.302]	.415 [10.541]	.026/.022 [660/.559]	212565-4
OBSOLETE	.098 [2.489]	.383 [9.728]	.042/.038 [1067/.965]	212565-3
OBSOLETE	.098 [2.489]	.383 [9.728]	.032/.028 [813/.7112]	212565-2
OBSOLETE	.098 [2.489]	.383 [9.728]	.026/.022 [660/.559]	212565-1

- 1. CONTACT BODY MAT'L: LEADED NICKEL COPPER (PROPRIETARY) EQUIVALENT ALTERNATE MAT'L: COPPER ALLOY PER ASTM-B-197
- 2. FINISH: PLATED GOLD PER MIL-G-45204 TYPE II, GRADE C CLASS 1 OVER COPPER PER MIL-C-14550, CLASS IV.
- 3. FOR USE IN P.C. BOARD.
- 4. CONTACT CAN BE USED IN ANY STANDARD HD-20 PLUG CONNECTOR.
- 5. INSERTION/EXTRACTION TOOL AMP P/N 91067-2.
- 6. CONTACTS MEET ALL APPLICABLE PERFORMANCE REQUIREMENTS OF MIL-C-39029.

THIS DRAWING IS A CONTROLLED DOCUMENT.

<table border="1"> <tr> <th>DIMENSIONS:</th> <th>TOLERANCES UNLESS OTHERWISE SPECIFIED:</th> </tr> <tr> <td>INCHES</td> <td>0 PLC ± -</td> </tr> <tr> <td></td> <td>1 PLC ± -</td> </tr> <tr> <td></td> <td>2 PLC ± -</td> </tr> <tr> <td></td> <td>3 PLC ± .005 [0.13]</td> </tr> <tr> <td></td> <td>4 PLC ± -</td> </tr> <tr> <td></td> <td>ANGLES ± -</td> </tr> </table>	DIMENSIONS:	TOLERANCES UNLESS OTHERWISE SPECIFIED:	INCHES	0 PLC ± -		1 PLC ± -		2 PLC ± -		3 PLC ± .005 [0.13]		4 PLC ± -		ANGLES ± -	<table border="1"> <tr> <td>OWN</td> <td>T. ALEXANDER</td> <td>11-12-91</td> </tr> <tr> <td>CHK</td> <td>F. KINSEY</td> <td>11-18-91</td> </tr> <tr> <td>APPV</td> <td>F. KINSEY</td> <td>11-18-91</td> </tr> </table>	OWN	T. ALEXANDER	11-12-91	CHK	F. KINSEY	11-18-91	APPV	F. KINSEY	11-18-91	<p>TE TE Connectivity</p> <p>POSTED PIN, AMPLIMITE, SIZE 20</p> <p>SIZE: A2 CAGE CODE: 00779 DRAWING NO: 212565</p> <p>RESTRICTED TO: -</p> <p>SCALE: 10:1 SHEET: 1 of 1 REV: K</p>
DIMENSIONS:	TOLERANCES UNLESS OTHERWISE SPECIFIED:																								
INCHES	0 PLC ± -																								
	1 PLC ± -																								
	2 PLC ± -																								
	3 PLC ± .005 [0.13]																								
	4 PLC ± -																								
	ANGLES ± -																								
OWN	T. ALEXANDER	11-12-91																							
CHK	F. KINSEY	11-18-91																							
APPV	F. KINSEY	11-18-91																							

MATERIAL: - 1 FINISH: - 2

WEIGHT: 0.000000

CUSTOMER DRAWING

X-ON Electronics

Largest Supplier of Electrical and Electronic Components

Click to view similar products for [D-Sub Contacts](#) category:

Click to view products by [TE Connectivity](#) manufacturer:

Other Similar products are found below :

[D02-22-26S-10000](#) [8656352067LF](#) [131A15029X](#) [132A11019X](#) [132J22039X](#) [132A11029X](#) [132A11049X](#) [132A12059X](#) [1757912-1](#) [188582-000](#) [162A11889X](#) [1757913-1](#) [212558-1](#) [030-1955-000](#) [053744-0098](#) [053744-0099](#) [053745-0105](#) [053745-0111](#) [601098N003](#) [86303057NLF](#) [131A11019X](#) [162A11819X](#) [40-9854MP](#) [1-208778-5](#) [FC120N2](#) [MC7526D/AA](#) [MC8122D/AA](#) [FC4010D-15](#) [FC4006D](#) [121A05329A](#) [164C16669X](#) [86566620064LF](#) [131A13019X](#) [DLS3XS5AK40X](#) [09692825723](#) [030-1954-000](#) [L17DM53744207](#) [L17RRD1M11400](#) [030-1952-000](#) [1655496](#) [030-1953-000](#) [030-1953-030](#) [132C11039X](#) [132J15019X](#) [132C15019X](#) [132A10039X](#) [131A10029X](#) [8638PSC2006LF](#) [8656453067LF](#) [86566520064LF](#)