

THIS DRAWING IS UNPUBLISHED.

RELEASED FOR PUBLICATION

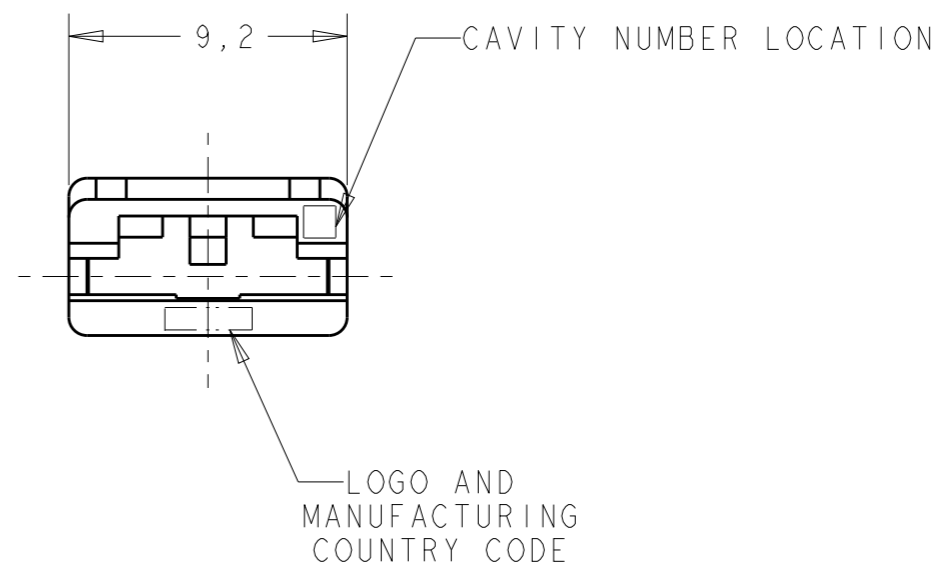
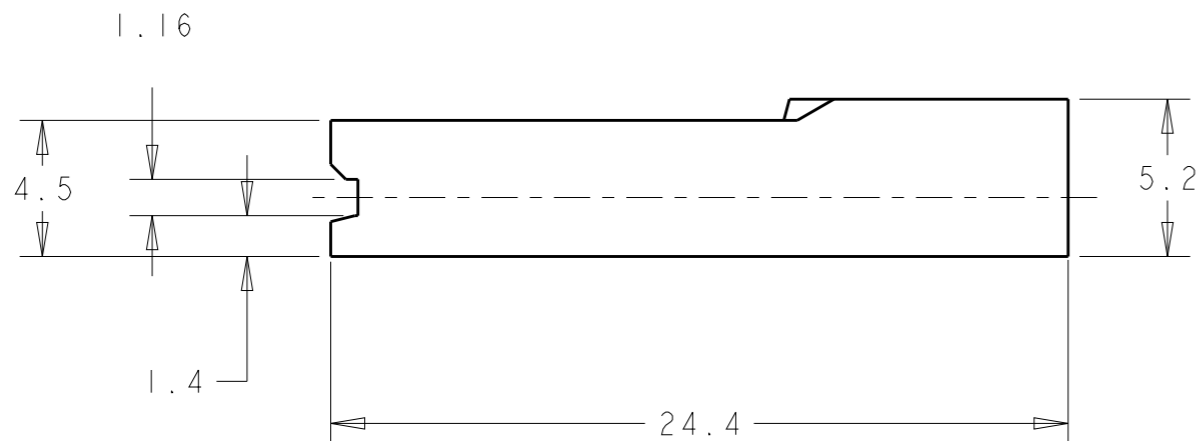
© COPYRIGHT -

ALL RIGHTS RESERVED.

LOC AP DIST -

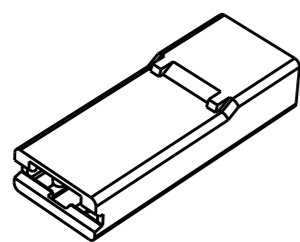
REVISIONS

P	LTR	DESCRIPTION	DATE	DWN	APVD
	A4	REV. BY ECO 17-010547	18JUL2017	HC	WLS
	A5	REV. BY ECO 18-014120	26SEP2018	HC	WLS
	B	REVISED PER ECO-19-015154	08OCT2019	WLS	WLS



BLACK	PBT - HB - TEMPERATURE RESISTANT	2-2133346-0
GREEN	PA 6.6 94 - V-2	1-2133346-5
BLACK		1-2133346-4
YELLOW		1-2133346-3
BLUE		1-2133346-2
RED		1-2133346-1
NATURAL		1-2133346-0
BLACK		POLIPROPYLENE
NATURAL	POLIPROPYLENE	2133346-1
COLOR	MATERIAL	PART NUMBER

OBSOLETE



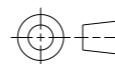
THIS DRAWING IS A CONTROLLED DOCUMENT.

DWN 23MAI2011
H.C. CANTER
CHK 25MAI2011
W.L. STEFANI

STE TE Connectivity

DIMENSIONS: mm

TOLERANCES UNLESS OTHERWISE SPECIFIED:



0 PLC ±
1 PLC ±0,3
2 PLC ±0,3
3 PLC ±
4 PLC ±
ANGLES ±°

PRODUCT SPEC 108-22033
APPLICATION SPEC

NAME POST INSULATION FASTON 6.35 MM HSG
POST INSULATION FASTON 6.35 MM HSG

MATERIAL SEE TABLE

FINISH SEE TABLE

WEIGHT -

SIZE A3 CAGE CODE - DRAWING NO C-2133346 RESTRICTED TO -

Customer Drawing

SCALE 4:1 SHEET 1 OF 1 REV B

X-ON Electronics

Largest Supplier of Electrical and Electronic Components

Click to view similar products for [Headers & Wire Housings](#) category:

Click to view products by [TE Connectivity](#) manufacturer:

Other Similar products are found below :

[892-18-020-10-001101](#) [58102-G61-06LF](#) [582553-1](#) [0009485154](#) [009176003701906](#) [0050291907](#) [LY20-4P-DT1-P1E-BR](#) [02.125.8002.8](#)
[609-3404](#) [61062-3](#) [61082-181009](#) [622-3653LF](#) [63453-116](#) [636-1030](#) [636-1427](#) [636-3427](#) [636-4007](#) [641938-9](#) [641991-4](#) [644827-2](#) [65817-010LF](#) [65817-015LF](#) [65863-015LF](#) [66207-023LF](#) [67095-007LF](#) [67601157](#) [68645-018](#) [68648-049](#) [70.362.1628.0](#) [70-4210](#) [70-4226B](#) [70-4853B](#) [707-5020](#) [707-5028](#) [71.350.2428.0](#) [71918-208LF](#) [71961-016LF](#) [733-134](#) [733-162](#) [754199-000](#) [760-3052](#) [787-8014-00](#) [79531-3000](#)
[FCN-360C032-B](#) [FCN-367T-T012/H](#) [FCN-723D010/2](#) [80.063.4001.1](#) [800-90-001-10-001000](#) [800-90-010-10-002000](#) [801-43-002-10-013000](#)