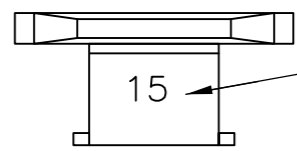


THIS DRAWING IS UNPUBLISHED. RELEASED FOR PUBLICATION  
 © COPYRIGHT - By - ALL RIGHTS RESERVED.

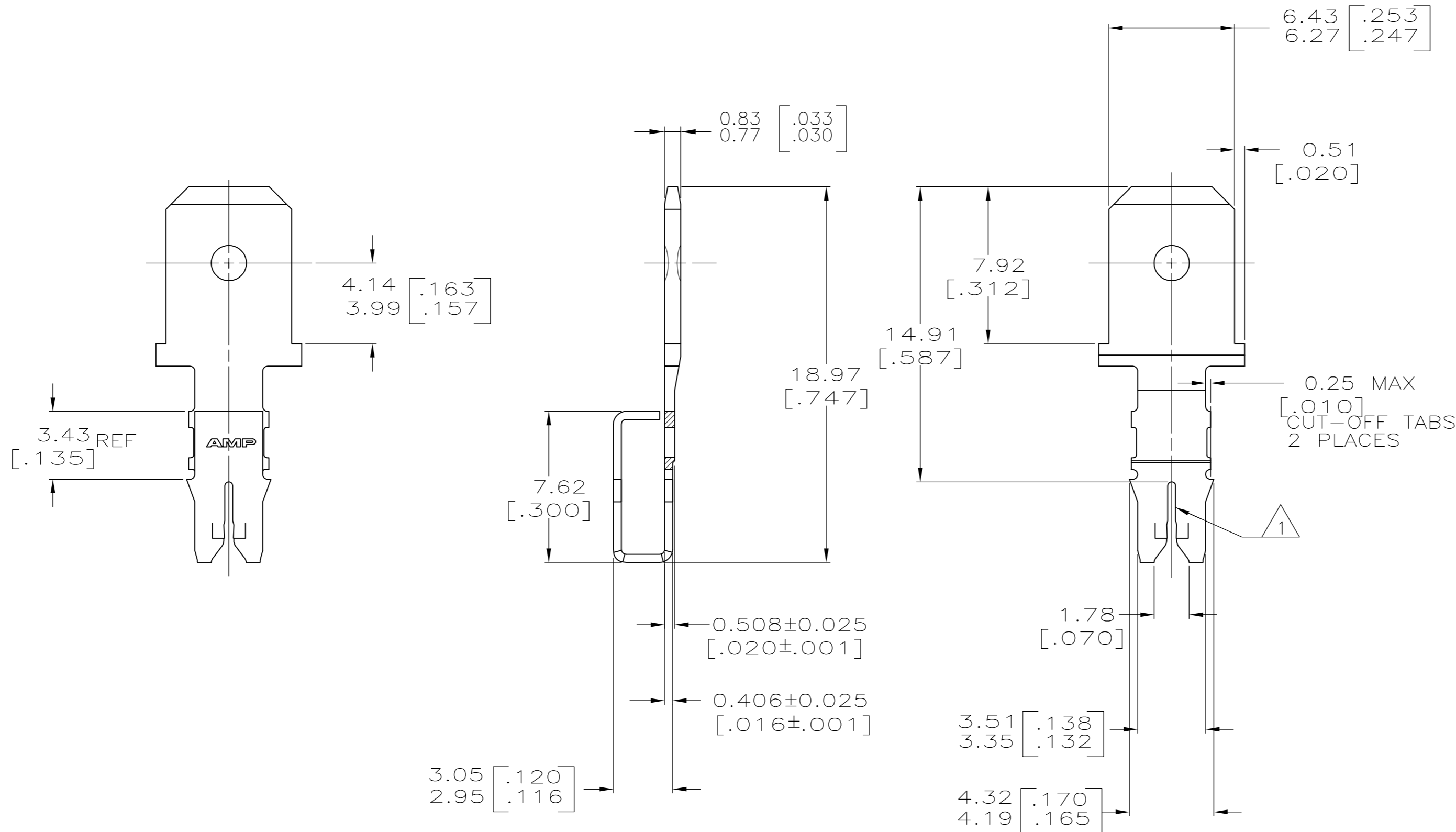
LOC	DIST	REVISIONS			
P	LTR	DESCRIPTION	DATE	DWN	APVD
AF	50	C2	ECR-15-005665	10AUG2015	BDA PKS



IDENTIFICATION NUMBER 15 FOR  
MAGNET WIRE RANGE

1 SLOT TERMINATES A SINGLE MAGNET WIRE, COPPER RANGE IS 0.64-0.81mm [#22-#20] AWG. ALUMINUM RANGE IS 0.72-0.91mm [#21-#19] AWG. ALUMINUM WIRE RANGE APPLIES FOR POST-TIN PLATED VERSIONS ONLY.

2 AFTER INSERTION INTO PLASTIC HOLDER TAB PORTION MUST BE BENT OVER 45° TO 90° OR POTTED-IN TO PREVENT PULL-OUT WHEN MATING RECEPTACLE IS DISCONNECTED.



1217031-1  
PART NUMBER

THIS DRAWING IS A CONTROLLED DOCUMENT.		DWN	R.GRZYBOWSKI	24NOV97			TE Connectivity				
DIMENSIONS:		CHK	M.S.FEHER	24NOV97			NAME		TAB, 6.35[.250] FASTON™		
mm [INCHES]		APVD	N.E.NEFF	24NOV97			PRODUCT SPEC		LOOSE PIECE, MAG-MATE™		
TOLERANCES UNLESS OTHERWISE SPECIFIED:		APPLICATION SPEC		108-2012			-				
0 PLC ± -		114-2046		SIZE		CAGE CODE		DRAWING NO		RESTRICTED TO	
1 PLC ± -		MATERIAL		WEIGHT		A2		00779		-	
2 PLC ± 0.25[.010]		BRASS		-		C=1217031		SCALE		SHEET	
3 PLC ± -		FINISH		CUSTOMER DRAWING		5:1		1 of 1		REV	
4 PLC ± -		TIN PLATE								C2	
ANGLES ± -											

## X-ON Electronics

Largest Supplier of Electrical and Electronic Components

*Click to view similar products for [Terminals](#) category:*

*Click to view products by [TE Connectivity](#) manufacturer:*

Other Similar products are found below :

[HT-13-10](#) [71M-250-32-NB](#) [01-2065-1-0216](#) [00581P0075](#) [M10-10RX](#) [M10BCK](#) [60205-1](#) [604200-1](#) [60598-1-CUT-TAPE](#) [60617-1-C](#) [60873-1](#) [M14-516R/SK](#) [M14-6RSX](#) [M18-8FBX](#) [M18-8R/LX](#) [M18BCK](#) [61314-6-C](#) [61-S](#) [61-SN-A](#) [62-NBM-A](#) [63-S](#) [640179-1](#) [640917-2-CUT-TAPE](#) [6501550002](#) [66107-2-C](#) [696683-1](#) [696834-1](#) [696861-1](#) [696931-1](#) [696999-1](#) [M8-516RK](#) [M86700006](#) [MA250DMFMX-A](#) [701-2007](#) [701-2307](#) [701-7761-03](#) [70F-110-32-PB](#) [718-N-A](#) [71M-187-20-NBL](#) [71M-250-32-NBL](#) [72F-187-20-NBL](#) [72M-250-32-NBL](#) [7310](#) [73F-250-32](#) [73F-250-32-NL](#) [F14-10C](#) [F-1M](#) [751-250](#) [76650-5002](#) [76828-149](#)