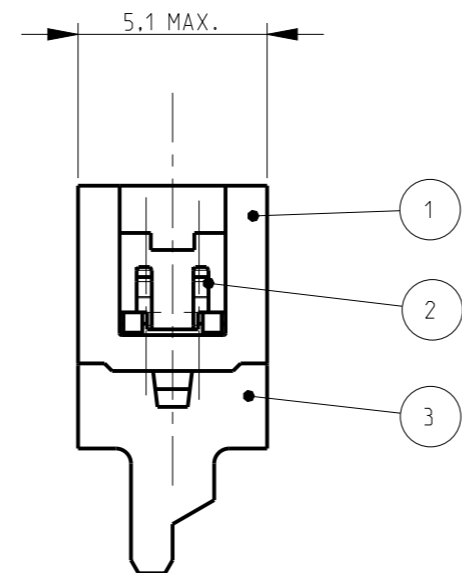
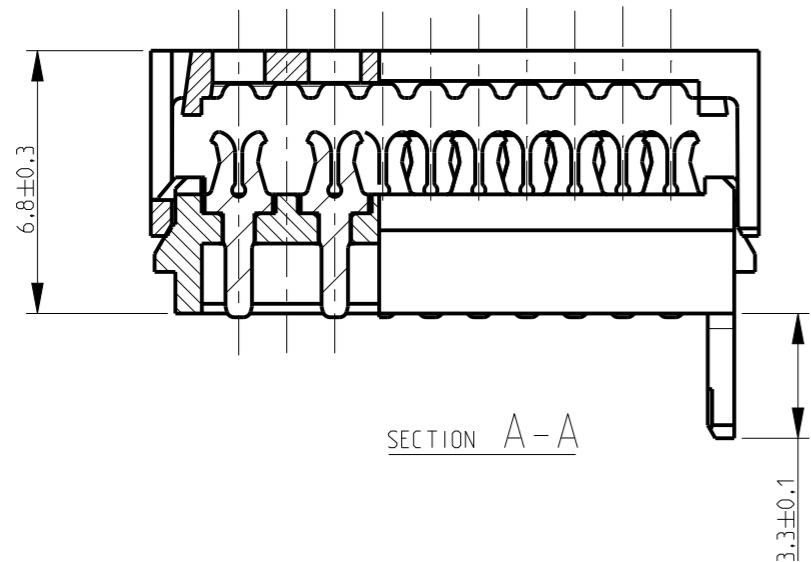
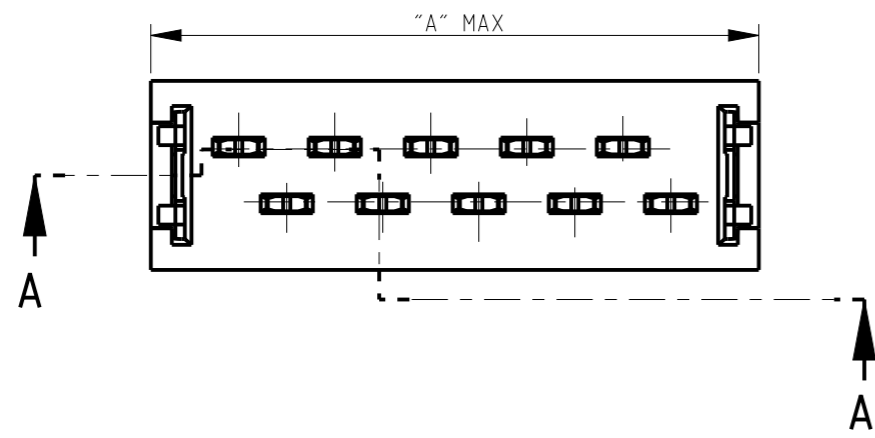
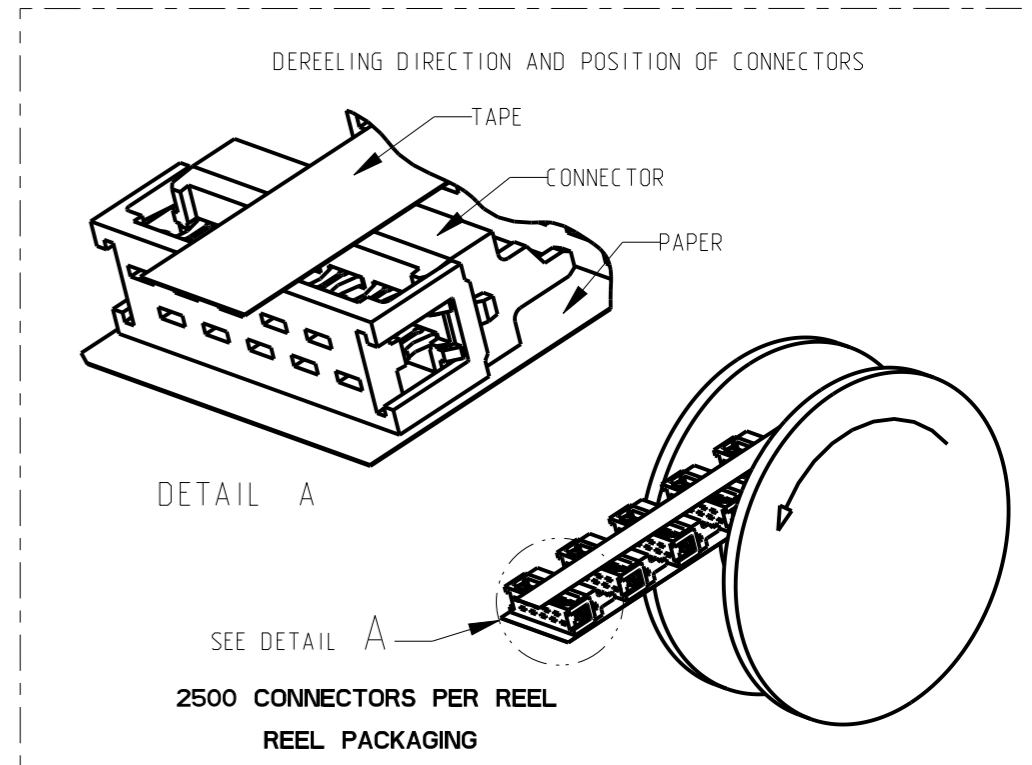


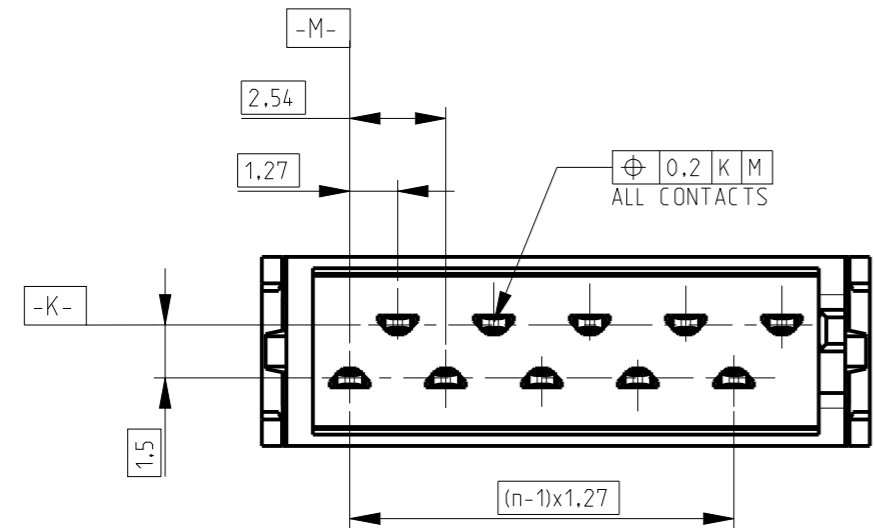
P	LTR	DESCRIPTION	DATE	DWN	APVD
	A1	PN STATUS UPDATED	17MAY2021	SB	KJK



PART NUMBER REEL PACKAGING	NO. OF POS "n"	DIMENSION "A" MAX
2178712-4	4	8.6
2178712-6	6	11.1
2178712-8	8	13.6
1-2178712-0	10	16.2
1-2178712-2	12	18.7
1-2178712-4	14	21.3
1-2178712-6	16	23.8
1-2178712-8	18	26.3
2-2178712-0	20	28.9



FINISH / COLOR	MATERIAL	DESCRIPTION	ITEM
BLACK	PBT, GF	HOUSING	3
3.0 - 5.0 μm TIN OVER 0.5 μm NICKEL	TIN BRASS	MALE CONTACT	2
BLACK	PBT, GF	COVER	1



THIS DRAWING IS A CONTROLLED DOCUMENT.

DIMENSIONS: mm	TOLERANCES UNLESS OTHERWISE SPECIFIED:
	0 PLC ±
	1 PLC ±
	2 PLC ±
	3 PLC ±
	4 PLC ±
	ANGLES ±
MATERIAL SEE TABLE	FINISH SEE TABLE

DWN PRASHANTH 08AUG2014
CHK PRASHANTH S 12AUG2014
APVD JAYANTH KUMAR 14AUG2014
PRODUCT SPEC 108-32087
APPLICATION SPEC 114-19016
WEIGHT -
CUSTOMER DRAWING

TE TE Connectivity

NAME
Micro-MaTch VALUE LINE
MALE-ON-WIRE CONNECTOR

SIZE A3	CAGE CODE 00779	DRAWING NO C-2178712	RESTRICTED TO
------------	--------------------	-------------------------	---------------

SCALE 5:1 SHEET 1 OF 1 REV A1

NOTES;
1. SHOWN IS A 10 POSITION CONNECTOR
△ OBSOLETE

X-ON Electronics

Largest Supplier of Electrical and Electronic Components

Click to view similar products for [Headers & Wire Housings](#) category:

Click to view products by [TE Connectivity](#) manufacturer:

Other Similar products are found below :

[892-18-020-10-001101](#) [58102-G61-06LF](#) [582553-1](#) [0009485154](#) [009176003701906](#) [0050291907](#) [LY20-4P-DT1-P1E-BR](#) [02.125.8002.8](#)
[609-3404](#) [61062-3](#) [61082-181009](#) [622-3653LF](#) [63453-116](#) [636-1030](#) [636-1427](#) [636-3427](#) [636-4007](#) [641938-9](#) [641991-4](#) [644827-2](#) [65817-](#)
[010LF](#) [65817-015LF](#) [65863-015LF](#) [66207-023LF](#) [67095-007LF](#) [67601157](#) [68645-018](#) [68648-049](#) [70.362.1628.0](#) [70-4210](#) [70-4226B](#) [70-](#)
[4853B](#) [707-5020](#) [707-5028](#) [71.350.2428.0](#) [71918-208LF](#) [71961-016LF](#) [733-134](#) [733-162](#) [754199-000](#) [760-3052](#) [787-8014-00](#) [79531-3000](#)
[FCN-360C032-B](#) [FCN-367T-T012/H](#) [FCN-723D010/2](#) [80.063.4001.1](#) [800-90-001-10-001000](#) [800-90-010-10-002000](#) [801-43-002-10-013000](#)