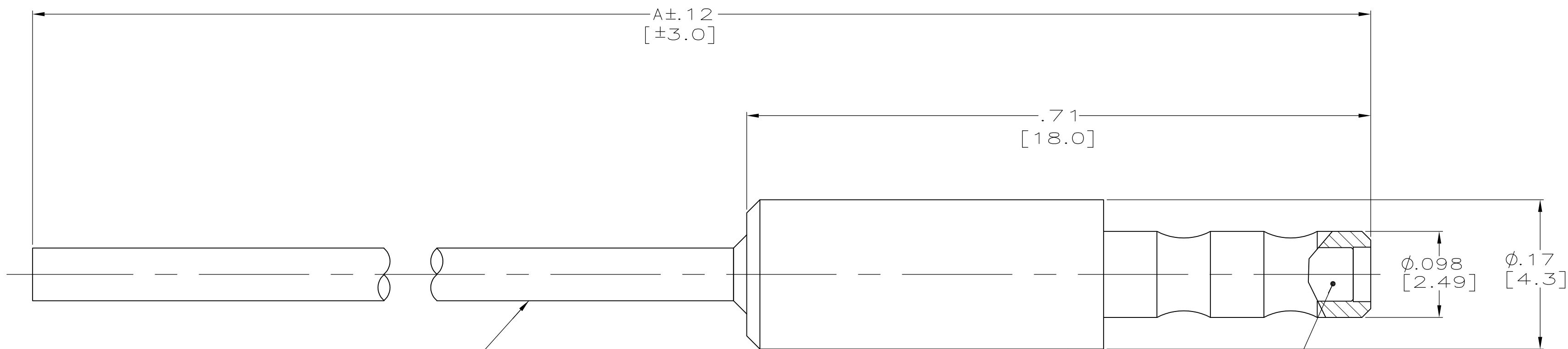


THIS DRAWING IS UNPUBLISHED. RELEASED FOR PUBLICATION
 © COPYRIGHT - By - ALL RIGHTS RESERVED.

| LOC | | DIST | | REVISIONS | | | |
|-----|-----|-----------------------|--|-----------|-----|------|--|
| P | LTR | DESCRIPTION | | DATE | DWN | APVD | |
| | C | REV PER ECO-12-013186 | | 18JUL12 | PY | DE | |



WIRE (SEE TABLE)

SILICONE RUBBER PER ZZ-R-765

SIZE 22 SOCKET CONTACT
 MAT'L: COPPER ALLOY
 FINISH: GOLD OVER NICKEL
 WITH STAINLESS STEEL SLEEVE
 PER MIL-C-39029/57-354

- OPERATING VOLTAGE: 6 KVDC
 TEMPERATURE RANGE: -55° C TO +125° C
 ALTITUDE: SEA LEVEL TO 70,000 FEET
- THIS PLUG WILL MATE WITH AMP PART NO. 1218148.
- 100% TESTING FOR DWV AND PARTIAL DISCHARGE PER RAYTHEON SPEC. G718649, GROUP A.
- 100% TESTING FOR DWV AND PARTIAL DISCHARGE PER RAYTHEON SPEC. G719581, GROUP A.

| REMARKS | DIM A | WIRE DESCRIPTION | PART NUMBER |
|----------|---------------|--|-------------|
| OBSOLETE | 15.00 [381.0] | #24 GA SILICONE COATED FEP .060 O.D. COLOR: RED | 1218147-3 |
| | 12.50 [317.5] | #24 GA SILICONE COATED FEP .060 O.D. COLOR: RED | 1218147-2 |
| | 12.50 [317.5] | #24 GA SILICONE COATED FEP .060 O.D. COLOR: RED | 1218147-1 |

| | | | | |
|---|--|-----------------------------|----------------------------|-------------------------------|
| THIS DRAWING IS A CONTROLLED DOCUMENT. | | DWN C.C.THOMAS 2-9-98 | STE TE Connectivity | |
| DIMENSIONS: INCHES | | CHK D.EABY 2-11-98 | | |
| TOLERANCES UNLESS OTHERWISE SPECIFIED: | | APVD D.EABY 2-11-98 | NAME PLUG,MICRO-MIN,LGH | |
| 0 PLC ± - 1 PLC ± - 2 PLC ± .01 [0.3] 3 PLC ± .005 [0.13] 4 PLC ± - ANGLES ± - | | PRODUCT SPEC - | - | |
| MATERIAL - | | FINISH - | WEIGHT - | RESTRICTED TO - |
| | | SIZE A2 | CAGE CODE 00779 | DRAWING NO 1218147 |
| | | CUSTOMER DRAWING | | SCALE 10:1 SHEET 1 of 1 REV C |

X-ON Electronics

Largest Supplier of Electrical and Electronic Components

Click to view similar products for [Specialised Cables category](#):

Click to view products by [TE Connectivity manufacturer](#):

Other Similar products are found below :

[603PT6](#) [603SS6L](#) [604PT6](#) [604SS6](#) [706000D02F200](#) [910640](#) [1200740077](#) [1200740114](#) [AC172](#) [ACL-SSI-4](#) [R88ACAKA0015SRE](#)
[R88ACAWL005SDE](#) [R88ACRGD0R3C](#) [1300150047](#) [1300660036](#) [1302262116](#) [1300150149](#) [1300220020](#) [1300220104](#) [1300220119](#)
[1301240492](#) [1301810221](#) [1365323-1](#) [1613055](#) [176P12](#) [1971465-2](#) [20240400003](#) [20240400013](#) [2085828-1](#) [20886510030](#) [2-22733-8](#) [22733-](#)
[8](#) [CB-5PSBC-RS](#) [CB-704EC-RS](#) [CB-BATACC-RS](#) [CB-JST3PSW-RS](#) [CB-M12COM-R10](#) [25AC84](#) [25AK84X](#) [25AU25](#) [25FN82](#) [3011-03](#)
[AC118](#) [ACL-HHS-1M\(CAT5E\)](#) [SSL009PC2DC012N](#) [FC2A-KC6C](#) [2085828-2](#) [20886510150](#) [CCS-FCB-5](#) [CCSFCBF2](#)