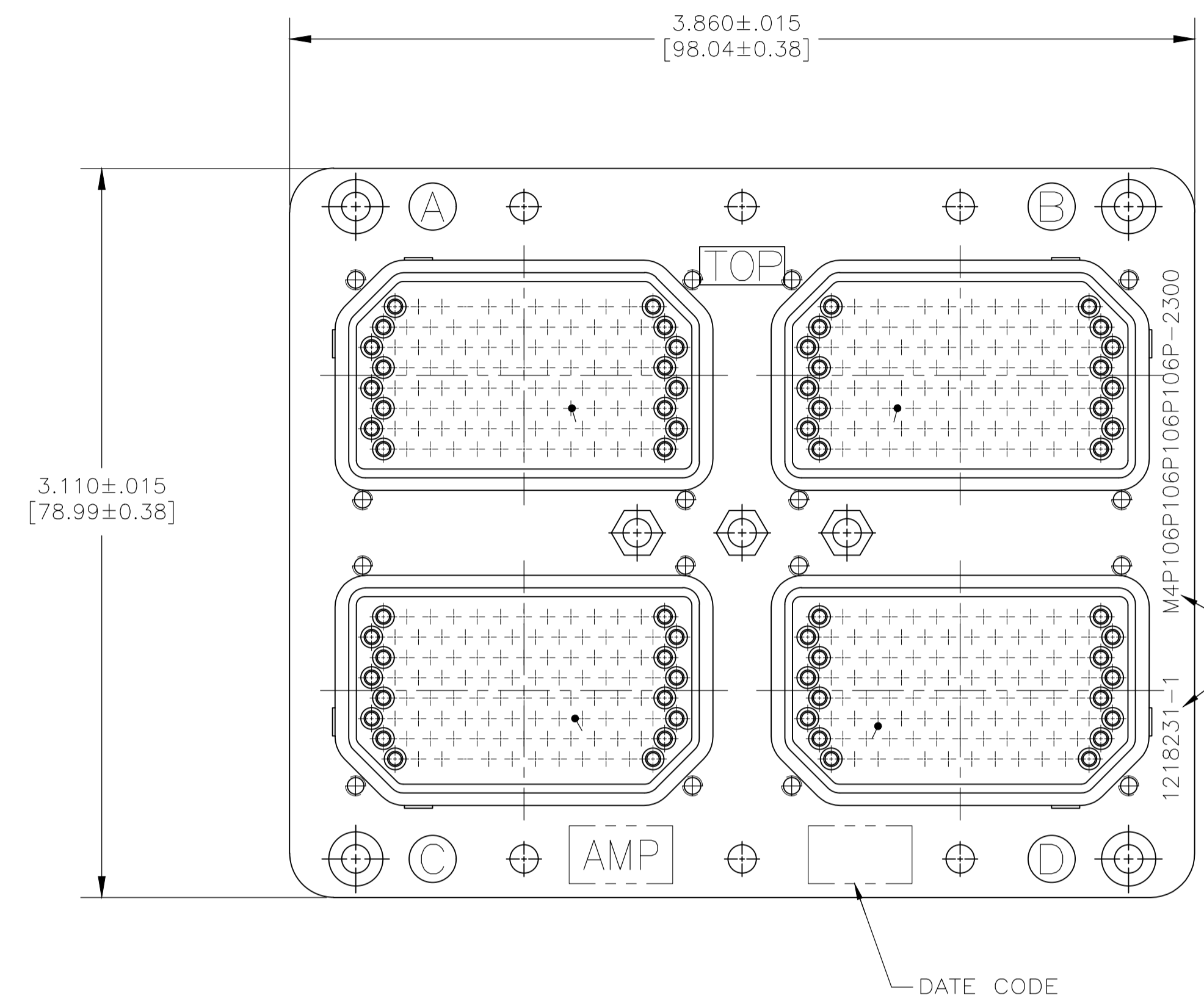


REVISIONS					
P	LTR	DESCRIPTION	DATE	DMN	APVD
A		RELEASED	3-12-20	CT	RL

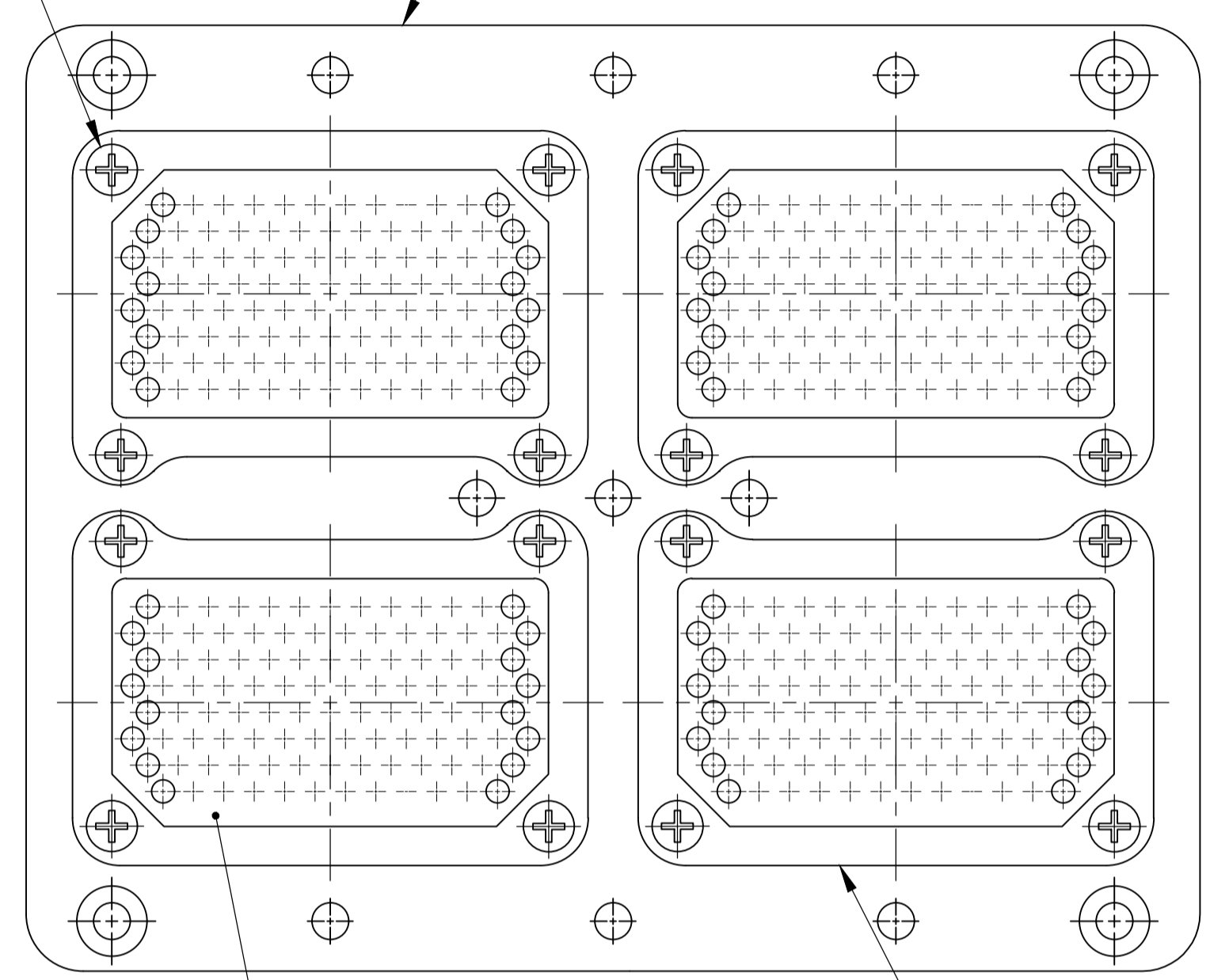
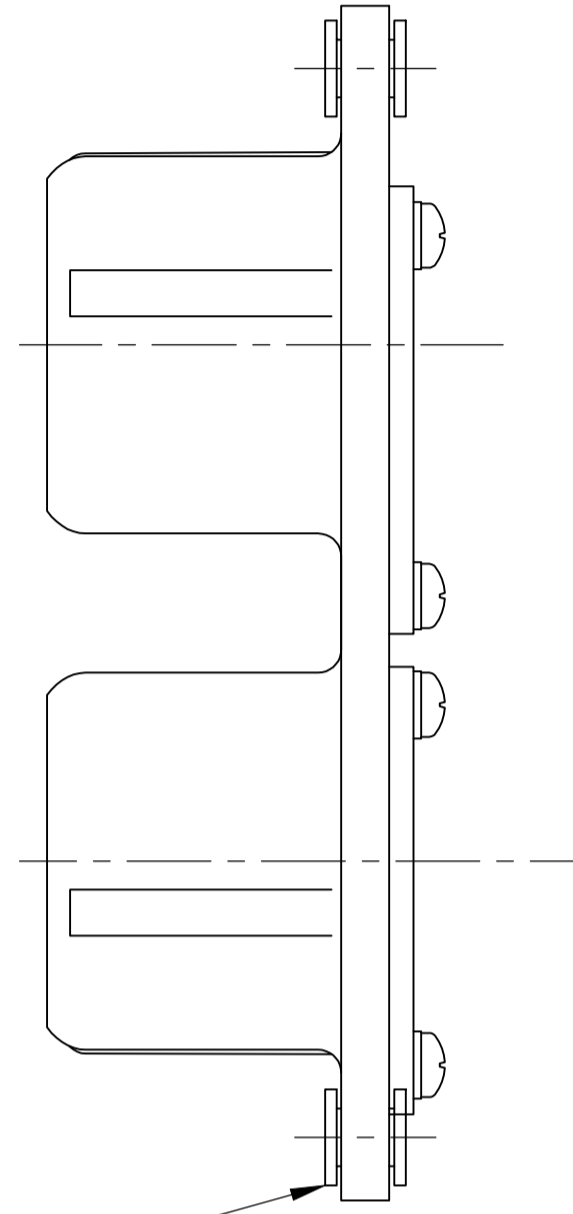


TE PART NO. & DESCRIPTIVE P/N MARKED IN THIS AREA

FLOAT BUSHING; QTY = 4
I.D. DIA. .118-.115 [3.00-2.92]

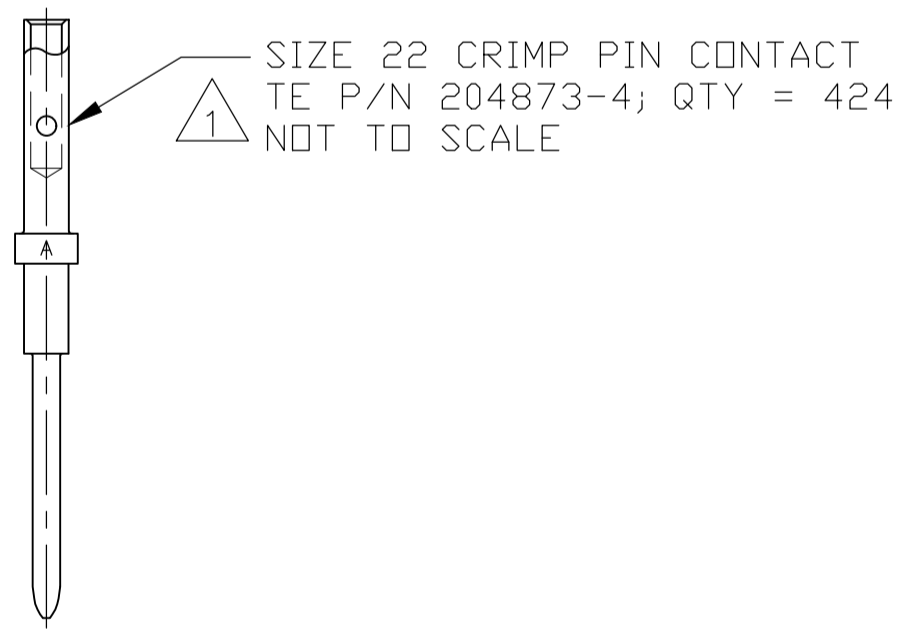
SCREWS & LOCKWASHERS
MAT'L: STAINLESS STEEL
FINISH: PASSIVATED
QTY = 16

SHELL
MAT'L: ALUMINUM ALLOY
FINISH: CADMIUM PLATED, YELLOW CHROMATE



106 POSITION PIN INSERT; QTY = 4
MAT'L: EPOXY MOLDING COMPOUND

RETAINER PLATE; QTY = 4
MAT'L: ALUMINUM ALLOY
FINISH: BLUE ANODIZED



SIZE 22 CRIMP PIN CONTACT
TE P/N 204873-4; QTY = 424
NOT TO SCALE

CONTACTS ARE PACKAGED SEPARATELY AND SHIPPED WITH CONNECTOR.

"00"	1218231-1
KEYING POSITION	PART NUMBER

THIS DRAWING IS A CONTROLLED DOCUMENT.		DIN C.C.THOMAS 3-12-20	TE Connectivity	
DIMENSIONS: INCHES		CHK R.LACUESTA 3-12-20	NAME ASSY, ARINC 404, M4P106P106P106P-2300 (200)	
TOLERANCES UNLESS OTHERWISE SPECIFIED:		APVD R.LACUESTA 3-12-20	PRODUCT SPEC	
0. PLC	± .005	APPLICATION SPEC		
1. PLC	± .002	SIZE A1		
2. PLC	± .001	CAGE CODE 00779		
3. PLC	± .0005	DRAWING NO. 1218231		
4. PLC	± .0002	RESTRICTED TO		
ANGLES	± .0001	WEIGHT 0.000000		
MATERIAL	FINISH	CUSTOMER DRAWING		
		SCALE 2:1		SHEET 1 OF 1
				REV A

X-ON Electronics

Largest Supplier of Electrical and Electronic Components

Click to view similar products for [Rack & Panel Connectors](#) category:

Click to view products by [TE Connectivity](#) manufacturer:

Other Similar products are found below :

[00170420102](#) [00171420202](#) [00171440002](#) [008026165000265](#) [02-014-013-5200-000](#) [613467-000](#) [CTJ112E01E-513](#) [CTJ116E03A-513](#)
[M81714/63-22S L/C](#) [M81714/65-12-1](#) [66020-2](#) [CW8958-000](#) [699886-000](#) [D250-50632](#) [70.400.3240.0](#) [70.955.2453.3](#) [733753-000](#) [F22831-000](#) [780-522-DPX34RG8-02](#) [MMA25-0341D1](#) [8660-501](#) [87.060.0053.0](#) [900709N001](#) [QRP4-12P-C\(01\)](#) [QR/P6-6S-C\(01\)](#) [1218600-1](#) [D-659-0061](#) [DMC-MD 24 C-T](#) [1-445717-6](#) [1484398-2](#) [1484399-2](#) [1484469-2](#) [MR-34MG](#) [1604997-2](#) [1663130-1](#) [1663767-7](#) [1663767-8](#) [MTC100-BF1-P31CS015](#) [MTC100-KT2-0083](#) [MTC100-KT2-0123-003](#) [MTC100-YA1-005](#) [MTCB1X-105-XXX](#) [MTCQKT1R2PGCA](#) [MTCR-103-04S](#) [MTCX1X-100-100CS025](#) [1738331-1](#) [1757667-1](#) [1883433-1](#) [1996636-1](#) [201784-4](#)