



T2212 PRINTER

BUDGET THERMAL TRANSFER PRINTER (300dpi)

TECHNICAL DATASHEET

TTDS-275 issue 1, August 2019

The T2212-PRINTER is designed to print on a wide range of TE Connectivity (TE) identification marker sleeves, cable markers, and labels. This light weight, low cost printer supersedes the T200-IDENT-PRINTER.

The T2212-PRINTER is now also available bundled, with the latest version of TE Connectivity printing software, WinTotal. Please see page 5, for software order details.

Please see page 3, for printer order details.

Features

- High accuracy printing
- Easy to use
- Light weight
- Small footprint
- Easy to fit accessories
- Full colour Touch screen
- Software version available
- Help Video's loaded on printer

Applications

- Office and Industrial environments

Approvals / Declarations

- **CE**
- **FCC Class A**
- **cULus**
- **EAC**
- **S-MARK**
- **CB**

Environmental

A downloadable declaration and further information covering RoHS and REACH compliance can be found at the 'TE Product Compliance Support Centre':

<http://www.te.com/en/resources/product-compliance.html>

Specifications

The printer's 300dpi resolution combined with recommended media and Thermal Transfer ribbons, meet all relevant TE RW performance specifications.

Print quality and print performance can only be guaranteed when specific TE printer and ribbons are used.

The current list of printers and ribbons can be found in

TE document 411-121005 'Identification Printer Product Ribbon Matrix'. This document can be found at the TE document centre: <http://www.te.com/commerce/DocumentDelivery/DDEController>

HELP

For help and assistance please contact your local TE Connectivity representative. Alternatively, please contact your local Identification specialist by consulting TE document "411-121057" This document can be found at the TE document centre: <http://www.te.com/commerce/DocumentDelivery/DDEController>



PRINTER ORDERING INFORMATION

DESCRIPTION	PART NUMBER
T2212-PRINTER	1-2186527-1
T2212-SWARE-PRINTER (Note 1)	1-2186528-1

PRINTER PROPERTIES

PERFORMANCE

PRINT SPEED	30, 40, 50, 75, 100, 125, 150mm/s. (1, 1.5, 2, 3, 4, 5, 6 in/s).
PRINT WIDTH MAX	105.7mm (4.2in).
PRINT DEFINITION	300 dpi Thermal Transfer.
LABEL WIDTH	5 to 120mm (0.2 to 4.7 in), 116mm (4.6 in) backing paper width.
LABEL HEIGHT	5mm (0.2 in) minimum to 4,500mm (176.2 in) maximum.
MEDIA ROLL CAPACITY	152mm (6.0 in) Outside Diameter, inside core diameter 38 – 76mm (1.5 – 3 in).
INK RIBBONS	25.4mm (1 inch) core, ink inside or outside, variable length up to 360M (1181 ft).
CUT MODE	Cutter & Perforator available as accessories.
SENSOR	Variable position Gap & Reflective (automatic calibration).
ELECTRICAL REQUIREMENTS	100 to 240V - 50/60Hz, PFC.
OPERATING TEMPERATURE	+5°C to +40°C (+41°F to +104°F).
OPERATING HUMIDITY	10% to 85% non-condensing RH.
POWER CONSUMPTION	Power save mode 1.8W. Typical 45W / Max 100W.
PHYSICAL CHARACTERISTICS	Depth: 322mm (12.7 inches). Height: 189mm (7.4 inches). Width: 253mm (10.0 inches). Weight: 4kg (8.8 lb).
PERFORATOR/CUTTER	Perforator: maximum product width 5 - 45mm (0.2 - 1.8 in). Cutter: maximum product width 5 - 85mm (0.2 - 3.3 in). Perforator/Cutter: 200 cuts/perforations per minute. Cut/Perforate length 5 - 1000mm.
INTERFACES	USB 2.0 High speed device for PC connection at the rear of the printer USB master X2 at rear of the printer, and X1 at side of touch screen have up to 500mA current capacity. The Touch screen USB port is for Service key and USB memory stick only. RS232 C 1.200 up to 230.400 Baud rate / 8 Bit. Ethernet 10 / 100 Base T, LPD, IPv4, RawIP printing, DHCP, HTTP/ HTTPS, FTP/FTPS, SMTP, SNMP, TIME, NTP, Zeroconf, SOAP web service, VNC.
ELECTRONICS	RAM 256MB, Processor speed 800MHz, Memory IFFS flash 50MB.

Note 1:

“T2212-SWARE-PRINTER” is a basic T2212-Printer with TE printing software WinTotal Dongle version, included in the printer box.

WinTotal can be purchased separately, see software order details on page 5.



PRINTER SPARE PARTS ORDERING INFORMATION (consumables)

300 dpi Printhead	
Description	T200-PRINthead
Part number	EC8927-000
Drive roller	
Part number	T200-DR4-DRIVEROLLER
Description	EC8926-000

PRINTER ACCESSORY ORDERING INFORMATION

Cutter	
Description:	T2212-PRINTER-CUTTER
Part number:	1-2186529-1
Perforator:	
Description:	T2212-PRINTER-PERFORATOR
Part number:	1-2186530-1
Universal reel holder	
Description:	PRINTER-UNIVERSAL-REEL-HOLDER
Part number:	EC9926-000

For more details regarding printer accessories please consult TTDS-260, and for more details concerning the Universal reel holder please consult TTDS-259.

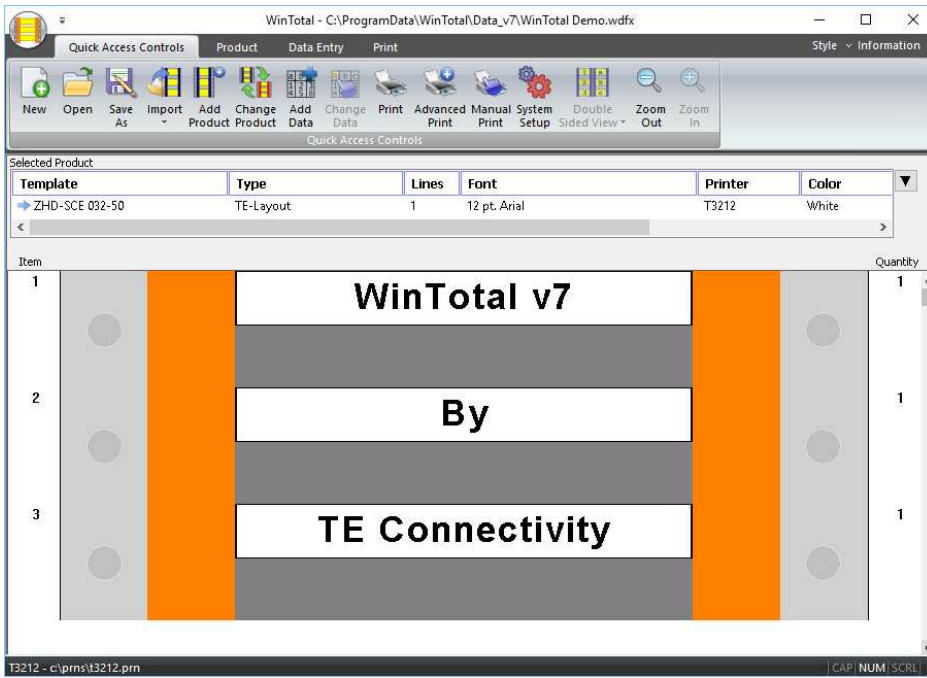


T2212 printer fitted with Cutter/Perforator.



T2212 printer with the Universal reel holder.

SOFTWARE



WINTOTAL 7 (Dongle)	
Description	WINTOTAL-7-DONGLE
Part number	1-2186545-1
WINTOTAL 7 (Licence)	
Description	WINTOTAL-7-END-USER-LICENCE
Part number	1-2186546-1
WINTOTAL 6 (Dongle)	
Description	WINTOTAL-6-DONGLE
Part number	EC9816-000
WINTOTAL 6 (Licence)	
Description	WINTOTAL-6-END-USER-LICENCE
Part number	EC9817-000

For full compatibility with T2212 printers please use WinTotal version 6.1.07 or later.

Cable Markers are fully supported by WINTOTAL and PrintEasy label printing software, available from the TE product store: www.te.com/wintotal
 Contact a TE representative for further information.

te.com

TE Connectivity, TE Connectivity (logo) Every Connection Counts and WinTotal are trademarks. All other logos, products and/or company names referred to herein might be trademarks of their respective owners.

The information given herein, including drawings, illustrations and schematics which are intended for illustration purposes only, is believed to be reliable. However, TE Connectivity makes no warranties as to its accuracy or completeness and disclaims any liability in connection with its use. TE Connectivity's obligations shall only be as set forth in TE Connectivity's Standard Terms and Conditions of Sale for this product and in no case will TE Connectivity be liable for any incidental, indirect or consequential damages arising out of the sale, resale, use or misuse of the product. Users of TE Connectivity products should make their own evaluation to determine the suitability of each such product for the specific application.

© 2019 TE Connectivity Ltd. family of companies All Rights Reserved.



X-ON Electronics

Largest Supplier of Electrical and Electronic Components

Click to view similar products for [Printers category](#):

Click to view products by [TE Connectivity manufacturer](#):

Other Similar products are found below :

[897252-000](#) [CU0620-000](#) [FTP-627USL402](#) [FTP-648MCL570](#) [PWC-L07A1-W1-E](#) [DPU-V445-10B-E](#) [D-SCE-12-50-S1-4](#) [IF2302-01UK-E](#)
[IF9001-01P-E](#) [IFC-001K](#) [2000P-RIBBON-4AG-MED](#) [206868-000](#) [OP-LH200A-E](#) [LB1256-E](#) [LM-1/4-TUBE-WE](#) [308-LE](#) [ACUH205A-E](#)
[1813390001](#) [FTP-628CU601R](#) [351013-000](#) [RH-48-00-E](#) [4775630001](#) [TTC-PRINTER-PRINTHEAD-300](#) [IF2301-01B](#) [IFC-001K-E](#) [IFH001-](#)
[01B](#) [LM-1/2-TUBE-WE](#) [DPU-D3-01A-E](#) [D-SCE-12-50-9](#) [094514-000](#) [E64127-000](#) [T200-RIBBON-WH-4HT](#) [CP3963-000](#) [2000P-](#)
[RIBBON-4AG-NAR](#) [2000P-RIBBON-WH-MED](#) [U001023895X1](#) [FTP-624Y002](#) [ED4098-000](#) [NC-LSC05](#) [TE3124-PRINTHEAD](#) [1-](#)
[2186371-1](#) [NA02273-V061](#) [FTP-62GY601](#) [FTP-62GY301](#) [0803480:0001](#) [346933-000](#) [D-SCE-6.4-50-9](#) [FTP-628MCL506](#) [FTP-](#)
[628MCL054#01](#) [1-2186503-1](#)