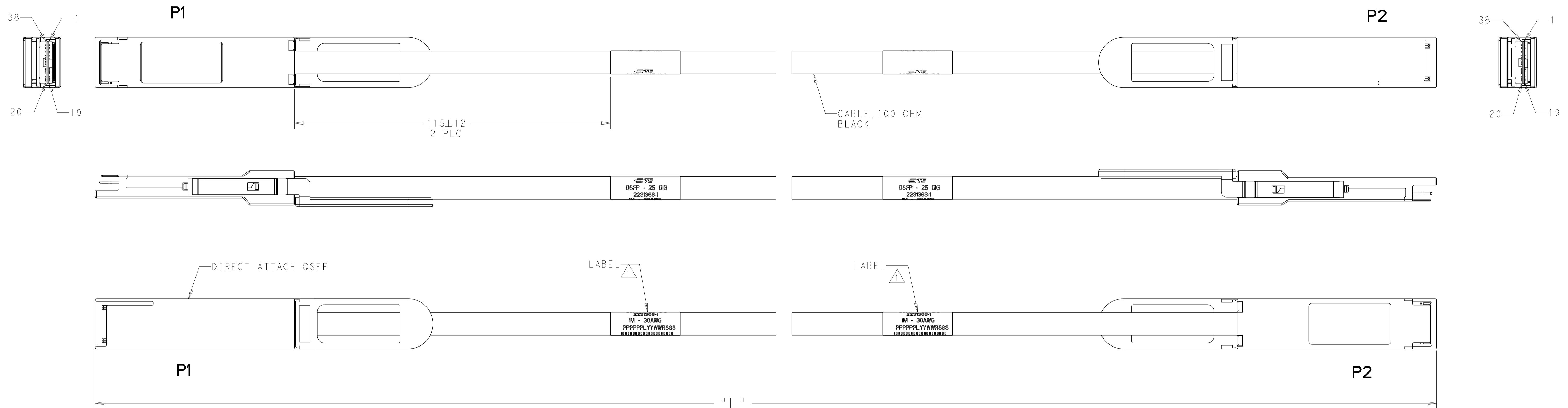
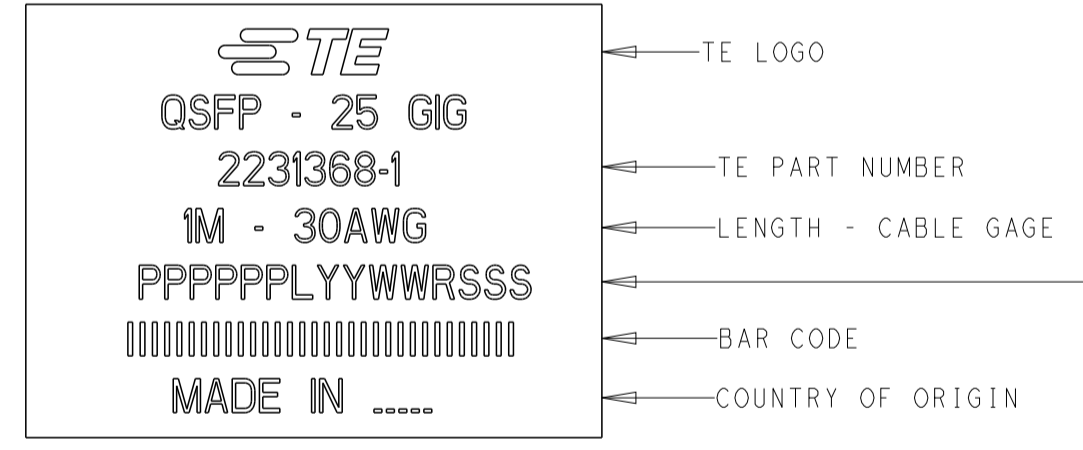


REVISIONS				
P	LTN	DESCRIPTION	DATE	OWN APVD
E		REVISED PER ECO-18-018662	29NOV2018	PL EC
K		REVISED PER ECO-19-002462	28FEB2019	AP GF
L		REVISED PER ECO-19-012453	13AUG2019	AP GF
M		REVISED AS PER ECN-21-132059	22DEC2021	KK AK



△ LABEL INFORMATION: -1 SHOWN.



SERIAL NUMBER:
 P-6-DIGIT, BASE 34, ALPHANUMERIC CHARACTERS
 (EXCLUDES 1 AND 0)
 L=MANUFACTURING LOCATION CODE.
 YYWW=DATE CODE, 2-DIGIT YEAR, 2-DIGIT WEEK
 R = 0 OR 1 FOR PCB A TRACEABILITY
 SSS=3-DIGIT, BASE 34, SERIAL ALPHANUMERIC CHARACTERS
 (EXCLUDES 1 AND 0)

- SEE SHEET 2 FOR WIRING SCHEMATIC.
- PRODUCT AND PROCESSING MUST MEET THE REQUIREMENTS OF TE SPECIFICATION TEC-138-702. (CONTAINS NO BANNED OR RESTRICTED SUBSTANCES)
- EEPROM DOES NOT INCLUDE PAGE SWAPPING.
- TEST IN ACCORDANCE WITH IEEE802.3bj.

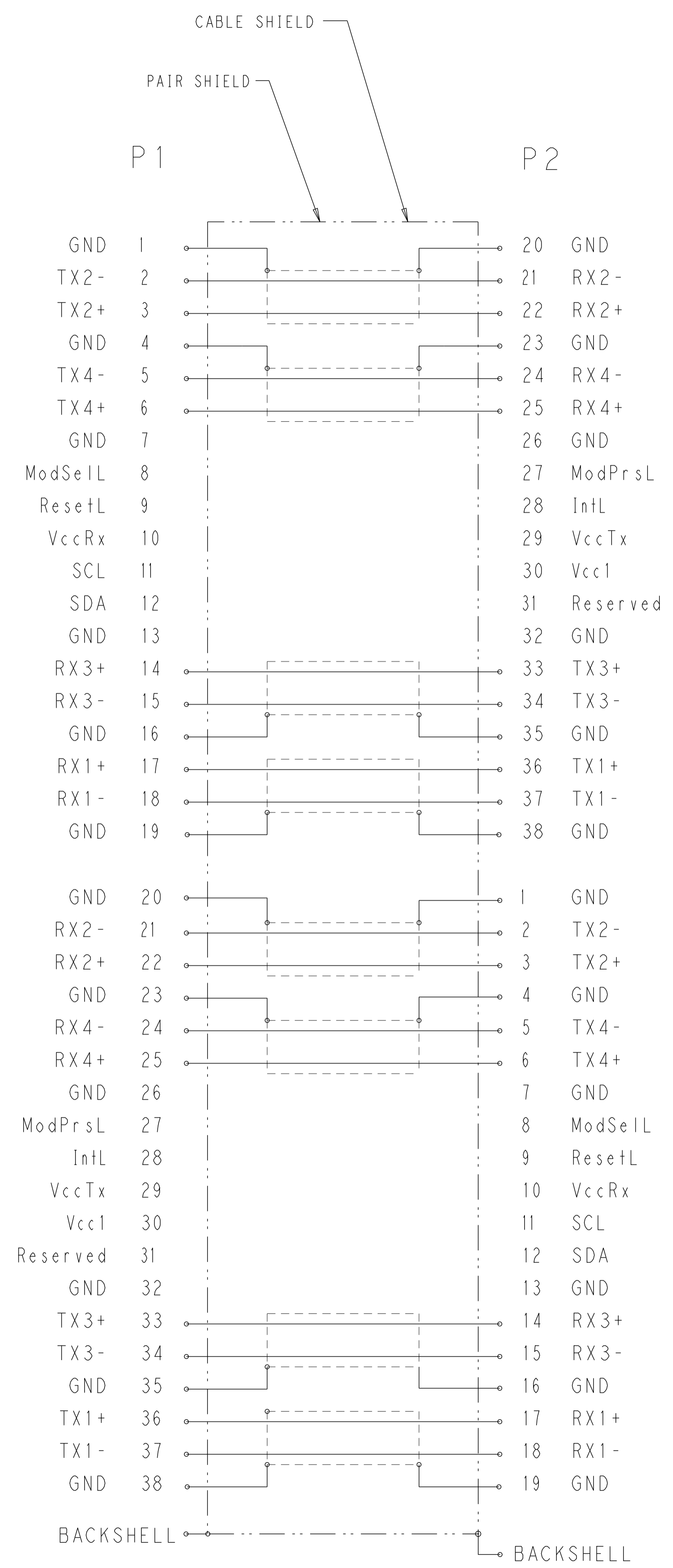
△ DUE TO SHORT CABLE LENGTH, THE PART NUMBERS INDICATED MAY NOT MEET IEEE802.3bj. RETURN LOSS AND MINIMUM INSERTION LOSS LIMITS

OBSOLETE	30	3500 +80/-0	3-2231368-5
	30	2500 +80/-0	3-2231368-4
SUPERSEDED BY 2333842-5	26	2500 +80/-0	3-2231368-3
	30	△ 500 +50/-0	2-2231368-3
SUPERSEDED BY 2336313-1	33	△ 500 +50/-0	2-2231368-2
SUPERSEDED BY 2333841-8	28	4000 +80/-0	2-2231368-1
SUPERSEDED BY 2333841-4	28	2000 +80/-0	2-2231368-0
OBSOLETE	24	7000 +100/-0	1-2231368-9
SUPERSEDED BY 2336313-4	33	2000 +80/-0	1-2231368-8
SUPERSEDED BY 2336313-3	33	1500 +50/-0	1-2231368-7
SUPERSEDED BY 2336313-2	33	1000 +50/-0	1-2231368-6
SUPERSEDED BY 2333842-3	26	1500 +50/-0	1-2231368-5
SUPERSEDED BY 2333842-4	26	2000 +80/-0	1-2231368-4
OBSOLETE	30	4000 +80/-0	1-2231368-3
SUPERSEDED BY 1-2333842-0	26	5000 +80/-0	1-2231368-2
OBSOLETE	24	4000 +80/-0	1-2231368-1
OBSOLETE	24	3000 +80/-0	1-2231368-0
	30	1500 +50/-0	2231368-9
	30	3000 +80/-0	2231368-8
SUPERSEDED BY 2333842-6	26	3000 +80/-0	2231368-7
OBSOLETE	24	6000 +80/-0	2231368-6
OBSOLETE	24	5000 +80/-0	2231368-5
SUPERSEDED BY 2333842-8	26	4000 +80/-0	2231368-4
SUPERSEDED BY 2333841-6	28	3000 +80/-0	2231368-3
	30	2000 +80/-0	2231368-2
	30	1000 +50/-0	2231368-1
	GAGE	"L" mm	PART NO

THIS DRAWING IS A CONTROLLED DOCUMENT.		OWN T. SMITH 08FEB2017	TE Connectivity NAME CABLE ASSEMBLY, DIRECT ATTACH QSFP 25GIG PRODUCT SPEC - APPLICATION SPEC - SIZE A1 CAGE CODE - DRAWING NO C=2231368 RESTRICTED TO - WEIGHT - MATERIAL - FINISH - CUSTOMER DRAWING
DIMENSIONS: mm		CHK E. CUESTA 08FEB2017	
TOLERANCES UNLESS OTHERWISE SPECIFIED:		APVD E. CUESTA 08FEB2017	
0 PLC ± 1 PLC ± 2 PLC ± 3 PLC ± 4 PLC ± ANGLES ± FINISH ±		SCALE 7:5 SHEET 1 OF 2 REV M	

THIS DRAWING IS UNPUBLISHED. RELEASED FOR PUBLICATION. ALL RIGHTS RESERVED.

REVISIONS				
P	LTN	DESCRIPTION	DATE	APVD
-	-	SEE SHEET 1	-	-



WIRING PATTERN

THIS DRAWING IS A CONTROLLED DOCUMENT.		OWN: T. SMITH 08FEB2017	
		CHK: E. CUESTA 08FEB2017	
DIMENSIONS:		APVD: E. CUESTA 08FEB2017	NAME: CABLE ASSEMBLY, DIRECT ATTACH QSFP 25GIG
mm		PRODUCT SPEC	
TOLERANCES UNLESS OTHERWISE SPECIFIED:		APPLICATION SPEC	RESTRICTED TO
0 PLC ±		SIZE: A1	CAGE CODE: -
1 PLC ±		DRAWING NO: C=2231368	SCALE: 6:5
2 PLC ±		WEIGHT: -	SHEET: 2 OF 2
3 PLC ±		CUSTOMER DRAWING	REV: M
4 PLC ±			
ANGLES ±			
FINISH ±			

X-ON Electronics

Largest Supplier of Electrical and Electronic Components

Click to view similar products for [Ethernet Cables / Networking Cables](#) category:

Click to view products by [TE Connectivity](#) manufacturer:

Other Similar products are found below :

[73-6670-7](#) [73-6680-15](#) [73-7797-25](#) [MCJB2-10P6Q7-120](#) [84909-0204](#) [1200700174](#) [1200860368](#) [E16A06002M030](#) [E200102-009-S1](#)
[AX105346-EW](#) [MT14-187L](#) [17-103530](#) [ERWPAB3002M005](#) [190-038045-01](#) [NK5EPC18RDY](#) [NK5EPC18VLY](#) [NK5EPC18YLY](#)
[NK5EPC1GRY](#) [NK5EPC4Y](#) [NK5EPC6YLY](#) [NK5EPC8BLY](#) [NK5EPC9YLY](#) [1969343-6](#) [C501100010](#) [C501106002](#) [C501106007](#)
[C501106015](#) [C501106025](#) [C601102010](#) [C601104010](#) [C601106007](#) [C601106015](#) [2142758-2](#) [2168427-2](#) [CAT1106007](#) [21949-1](#) [2J1866A](#)
[RJF SFTP 5E 0500](#) [AX100351](#) [MN14CEC/ST](#) [C501100015](#) [C501106004](#) [C501106010](#) [C5F1108007](#) [C601104004](#) [C601106004](#)
[CA21106004](#) [CA21106010](#) [CA21106015](#) [CA21109007](#)