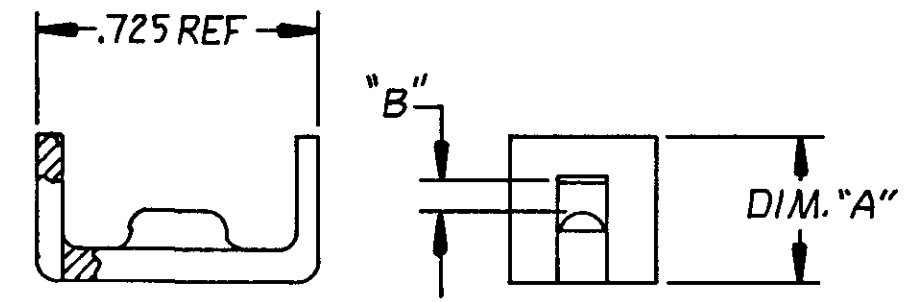


THIS DRAWING IS UNPUBLISHED. RELEASED FOR PUBLICATION
 © COPYRIGHT

⚠ CHECK CABLE RANGE FOR SATISFACTORY PERFORMANCE ON SPECIFIC CABLE TO BE USED.

TABULATION				
PART NO.	COLOR	DIM."A" REF	DIM."B" REF	APPROX CABLE DIA ⚠
229910-1	BLACK	.375	.100	.350-.425
1-229910-1	BLACK	.470	.195	.425-.500
229910-4	GRAY	.375	.100	.350-.425
1-229910-4	GRAY	.470	.195	.425-.500
2-229910-1	BLACK	.375	.050	.325-.370
2-229910-4	GRAY	.375	.050	.325-.370
3-229910-1	BLACK	.375	.015	.300
3-229910-4	GRAY	.375	.015	.300
4-229910-1	BLACK	.535	.260	.550

		1			LOC AA	DIST 20
REVISIONS						
P	F	ZONE	LTR	DESCRIPTION	DATE	APPROVED
			S1	REVISED PER ECO-11-005294	11APR11	HMR



UNLESS OTHERWISE SPECIFIED DIMENSIONS ARE IN INCHES. TOLERANCES ON: DECIMALS ± .015 ANGLES ± 1°				CONTRACT NO 4-18-86		PART NO	
MATERIAL THERMOPLASTIC		CHK Stephen Deen 5/7/86		TE Connectivity			
FINISH		APPD J. Trammel 5/14/86		NAME CLAMP, CABLE			
		DSGN APPD		SIZE B	FSCM NO 00779	DRAWING NO 229910	
		OTHER APPD		SCALE 2:1			SHEET 1 OF 1

X-ON Electronics

Largest Supplier of Electrical and Electronic Components

Click to view similar products for [I/O Connectors](#) category:

Click to view products by [TE Connectivity](#) manufacturer:

Other Similar products are found below :

[571763P](#) [58098-0628](#) [72.250.1628.2](#) [72.250.2428.2](#) [74720-0505](#) [76.350.0729.0](#) [76871-1403](#) [FCN-244F080-G/1](#) [FCN-260A9920](#) [PCR-E36PM](#) [PCS-XE26MA+](#) [G38A71314B](#) [1571250010](#) [157-22500-3](#) [MS3471L14-19P L/C](#) [172501-4002](#) [172501-6002](#) [FCN-260C008-A/L0](#) [FCN-260C024-AL0](#) [FCN-261Z008](#) [2000314-1](#) [200331-1](#) [PCR-E36FC+](#) [PCS-E28FS+](#) [PCS-XE26SLFD+](#) [PCS-XE26SLFDT+](#) [G730VID08BDC24](#) [U90B2054081210](#) [38113800006](#) [DP3AR020WQ1R200](#) [Z4.102.0680.0](#) [500-1040](#) [500-1052](#) [500-1054](#) [ZP-4008-66L](#) [0709821002](#) [DX40-20P\(55\)](#) [5554841-1](#) [MS3474W18-8P-LC*](#) [U90B3054061110](#) [U65-E04-4020](#) [ZPF000000000097891](#) [747360449](#) [10099439-003C-TRLF](#) [10137239-0021LF](#) [E9320-001-01](#) [10137239-0011LF](#) [70289-001LF](#) [70.060.1028.0](#) [109029-ZZ](#)