

4

3

2

1

THIS DRAWING IS UNPUBLISHED.

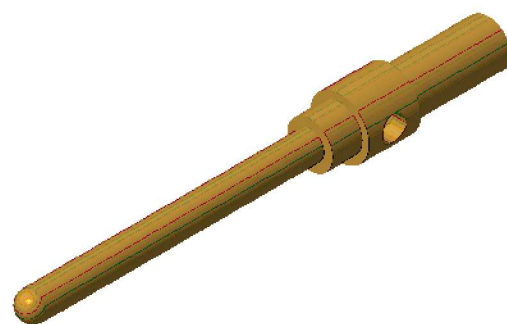
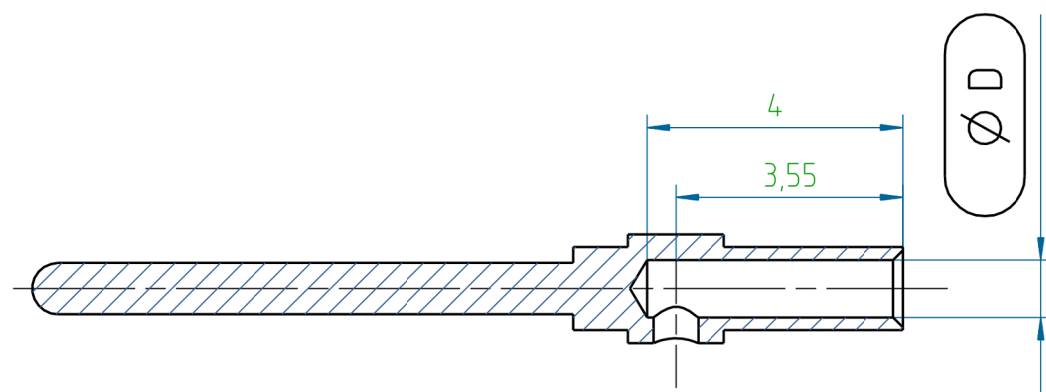
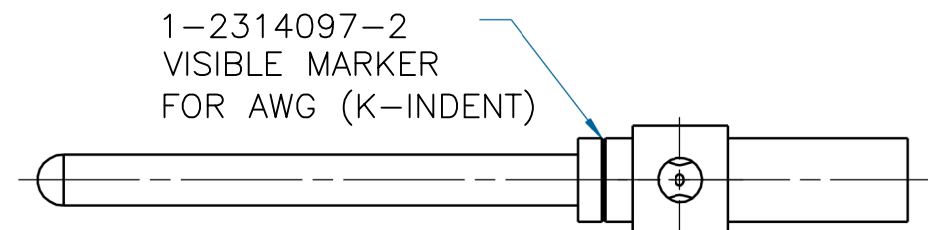
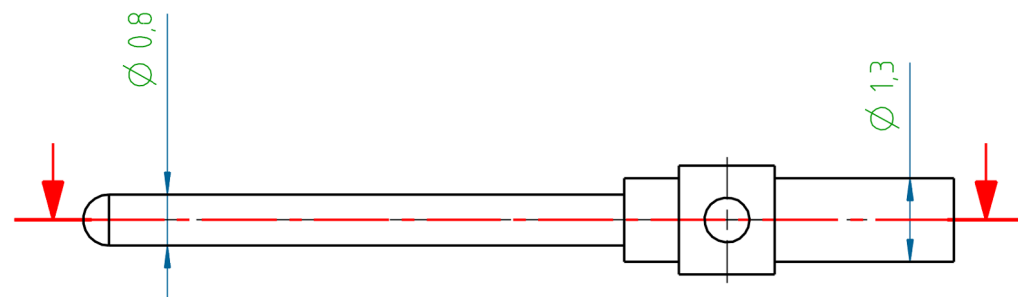
RELEASED FOR PUBLICATION

REVISIONS

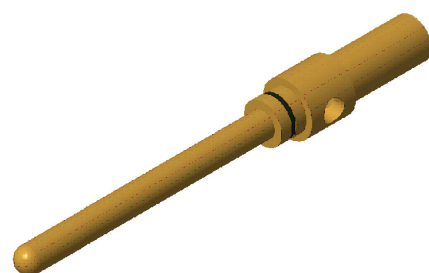
© COPYRIGHT - By - ALL RIGHTS RESERVED.

P	LTR	DESCRIPTION	DATE	DWN	APVD
	A1	REVISED PER ECR-16-014891	09JAN2017	KK	SE

PROJECT	PRJ-14-000004825
PART NO.	X-2314097-X
DESCRIPTION	M12 CRIMP CONTACT PIN 0.8mm AWG22/AWG26
CUSTOMER	GENERAL MARKET



1-2314097-1



1-2314097-2

SL.NO	PART NO.	PART NAME	øD	MATERIAL	SURFACE TREATMENT	REMARKS
2	1-2314097-2	M12 CRIMP CONTACT PIN A 0.8MM AWG26 (AU08)	0.6	BRASS	1.5-2.5µm Ni/0.8µmAu	K-INDENT
1	1-2314097-1	M12 CRIMP CONTACT PIN A 0.8MM AWG22 (AU08)	0.9			-

THIS DRAWING IS A CONTROLLED DOCUMENT.		DWN KIRAN K 06DEC2016	STE TE Connectivity		
		CHK KIRAN K 06DEC2016			
DIMENSIONS: mm		APVD S EGBERT 06DEC2016	NAME M12 CRIMP CONTACT PIN 0.8mm AWG22/AWG26		
TOLERANCES UNLESS OTHERWISE SPECIFIED: DIN ISO 2768 m		PRODUCT SPEC 108-156001			
0 PLC ± - 1 PLC ± - 2 PLC ± - 3 PLC ± - 4 PLC ± - ANGLES ± -		APPLICATION SPEC 114-156002			
MATERIAL -		FINISH -	WEIGHT A3	SIZE 00779	CAGE CODE C=2314097
CUSTOMER DRAWING			SCALE NTS	SHEET 1 OF 1	REV A1

NOTES:
1. APPLICATION TOOLING TO BE USED
601967-1 (STANDARD) OR
601966-1 (COMPACT).

X-ON Electronics

Largest Supplier of Electrical and Electronic Components

Click to view similar products for [Circular Metric Connectors](#) category:

Click to view products by [TE Connectivity](#) manufacturer:

Other Similar products are found below :

[600X518037X](#) [6STD15PCR99B70A](#) [8R4000A16M020](#) [8R5000A16M005](#) [1200910002](#) [1203580030](#) [1200910008](#) [1200910011](#) [1300140094](#)
[130203-0054](#) [1300140026](#) [1300150099](#) [RF-12S1N8A90DU](#) [1-3637-600-5205](#) [1612618](#) [21036836414](#) [8R4006A16M010](#) [8R5006A18A120](#)
[1604232](#) [1R3006A20M005](#) [RF-12P1N8A80DU](#) [RF-12P1N8A90DU](#) [41-40011](#) [42-01015](#) [4-22279-4](#) [4-22281-1](#) [4-22284-9](#) [43-00113](#) [43-](#)
[01088](#) [43-01203](#) [41-40013](#) [42-00008](#) [43-00343](#) [43-01032](#) [43-01162](#) [43-10000](#) [600X518050X](#) [SACC-DSI-FS-5P-PG9-L180 SC](#)
[8R5006A16M020](#) [8R5006A16M005](#) [8R4000A16M010](#) [6-22279-3](#) [1605332](#) [N03FA03144](#) [1300140077](#) [43-01338](#) [XS2RD4265](#) [RSC 4/9](#)
[XS2R-D426-1](#) [XS8A-0441](#)