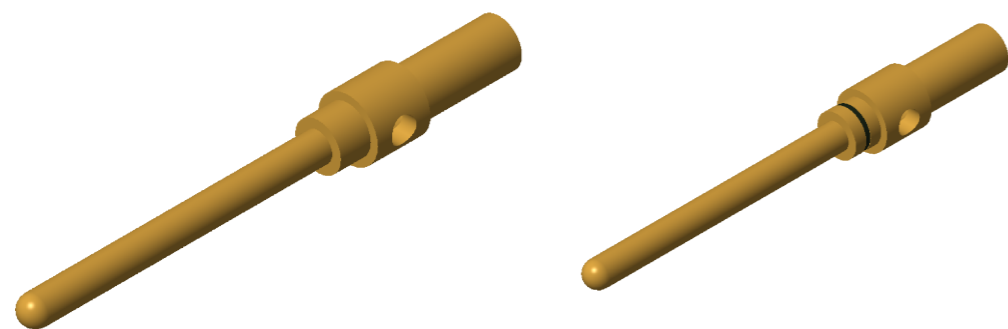
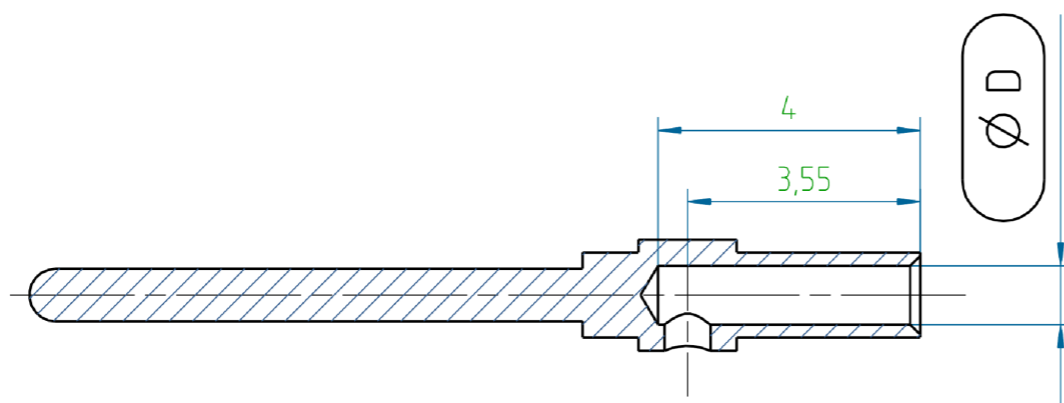
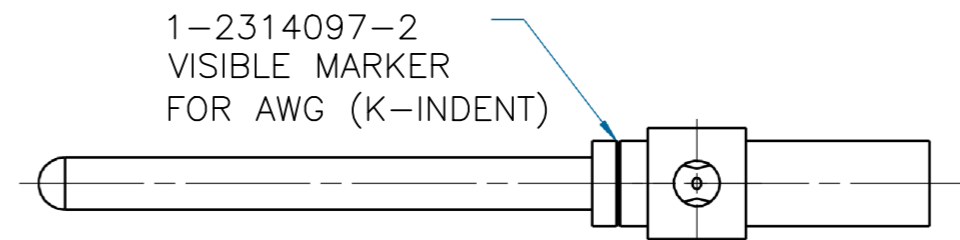
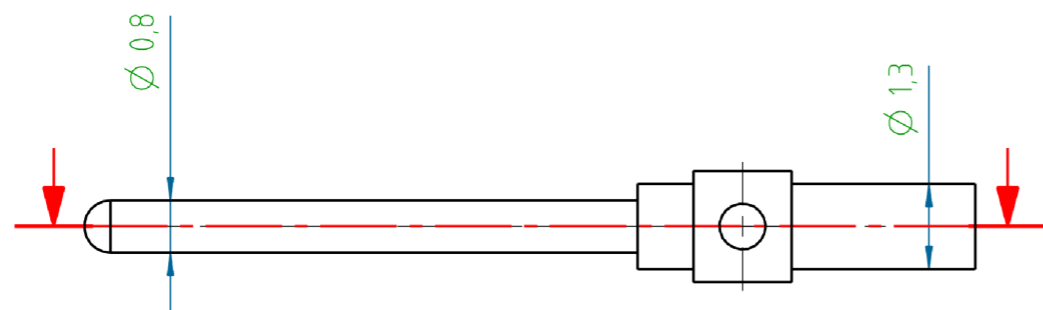


THIS DRAWING IS UNPUBLISHED.		RELEASED FOR PUBLICATION	
© COPYRIGHT - By -		ALL RIGHTS RESERVED.	
PROJECT	PRJ-14-000004825		
PART NO.	X-2314097-X		
DESCRIPTION	M12 CRIMP CONTACT PIN 0.8mm AWG22/AWG26		
CUSTOMER	GENERAL MARKET		

REVISIONS					
P	LTR	DESCRIPTION	DATE	DWN	APVD
	A2	REVISED PER ECR-17-013764	18SEP2017	GK	SE



1-2314097-1

1-2314097-2

NOTES:

- APPLICATION TOOLING TO BE USED
601967-1 (STANDARD), RECOMMENDED POSTIONER IS 1-2823582-4 OR
601966-1 (COMPACT), RECOMMENDED POSTIONER IS 1-2823581-1.

SL.NO	PART NO.	PART NAME	$\varnothing D$	MATERIAL	SURFACE TREATMENT	REMARKS
2	1-2314097-2	M12 CRIMP CONTACT PIN A 0.8MM AWG26 (AU08)	0.6	BRASS	1.5-2.5 μ m Ni/0.8 μ mAu	K-INDENT
1	1-2314097-1	M12 CRIMP CONTACT PIN A 0.8MM AWG22/AWG24 (AU08)	0.9			-

THIS DRAWING IS A CONTROLLED DOCUMENT.		DWN KIRAN K 06DEC2016	TE Connectivity			
		CHK KIRAN K 06DEC2016				
		APVD S EGBERT 06DEC2016				
		PRODUCT SPEC 108-156001				
DIMENSIONS: mm		TOLERANCES UNLESS OTHERWISE SPECIFIED: DIN ISO 2768 m	NAME M12 CRIMP CONTACT PIN 0.8mm AWG22/AWG26			
		0 PLC $\pm -$ 1 PLC $\pm -$ 2 PLC $\pm -$ 3 PLC $\pm -$ 4 PLC $\pm -$ ANGLES $\pm -$	APPLICATION SPEC 114-156002			
MATERIAL -		FINISH -	SIZE A3	CAGE CODE 00779	DRAWING NO C-2314097	RESTRICTED TO -
CUSTOMER DRAWING			SCALE NTS	SHEET 1 OF 1	REV A2	

X-ON Electronics

Largest Supplier of Electrical and Electronic Components

Click to view similar products for [Circular Metric Connectors](#) category:

Click to view products by [TE Connectivity](#) manufacturer:

Other Similar products are found below :

[600X518037X](#) [MA1EAF1200](#) [6STD15PCR99B70A](#) [8R4000A16M020](#) [8R4A00A18M020](#) [8R5000A16M005](#) [1200910008](#) [1200910011](#)
[1300140094](#) [130203-0054](#) [1300150099](#) [RF-12S1N8A90DU](#) [1-3637-600-5205](#) [1612618](#) [8R4006A16M010](#) [8R5006A18A120](#) [1604232](#)
[1R3006A20M005](#) [RF-12P1N8A80DU](#) [RF-12P1N8A90DU](#) [41-01016](#) [41-40011](#) [41-40017](#) [42-01015](#) [4-22279-4](#) [4-22281-1](#) [4-22284-9](#) [43-](#)
[00002](#) [43-01166](#) [41-40005](#) [41-40016](#) [43-00161](#) [43-01191](#) [XS3P-M421-2](#) [600X518050X](#) [SACC-DSI-FS-5P-PG9-L180 SC](#) [8R4006A16A120](#)
[8R4000A16M010](#) [RKC 50/16](#) [1R3004A20A1201](#) [6-22279-3](#) [N03FA03144](#) [1300140077](#) [XS8A-0441](#) [859RD04-103R004](#) [860RD04-113R004](#)
[860RD04-213R004](#) [860-X08-213R004](#) [1-213245-2](#) [2273142-2](#)