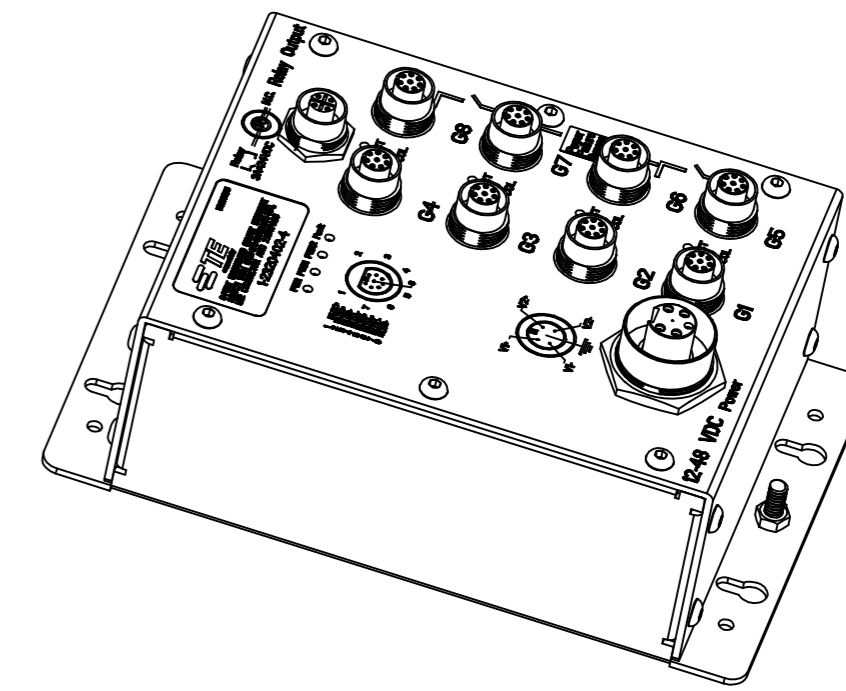
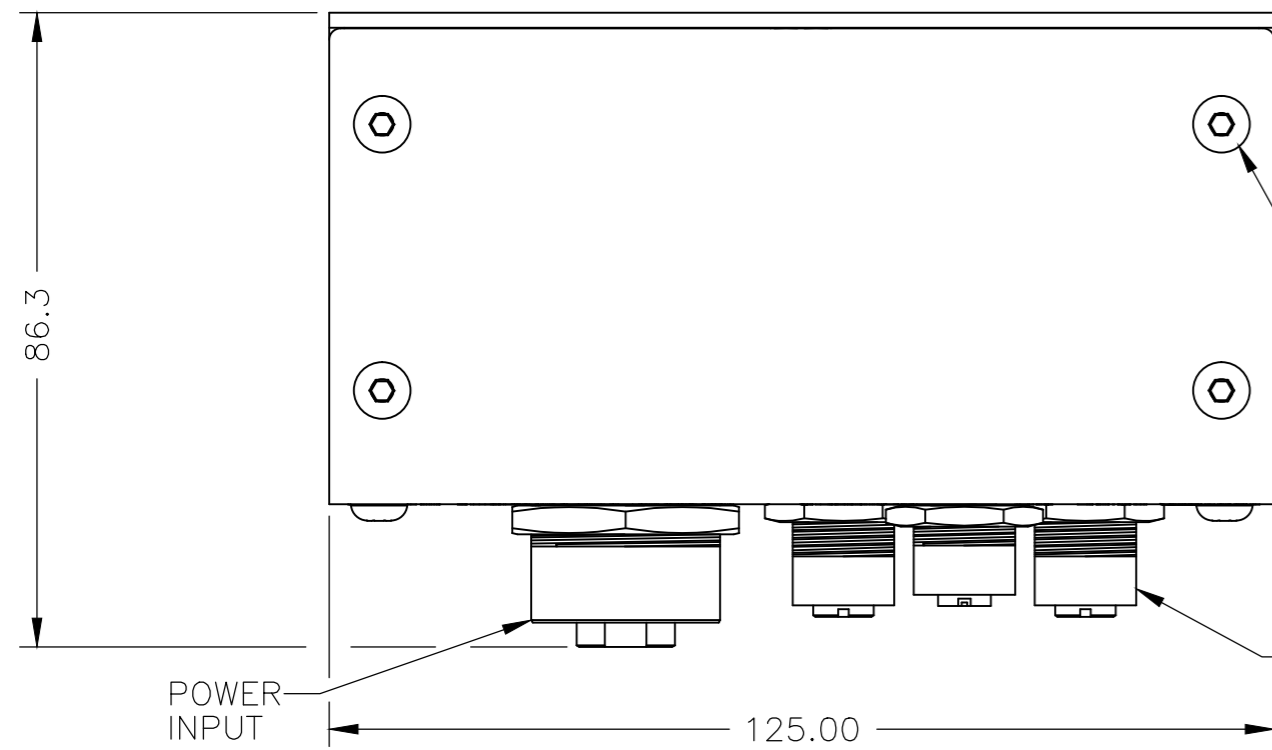
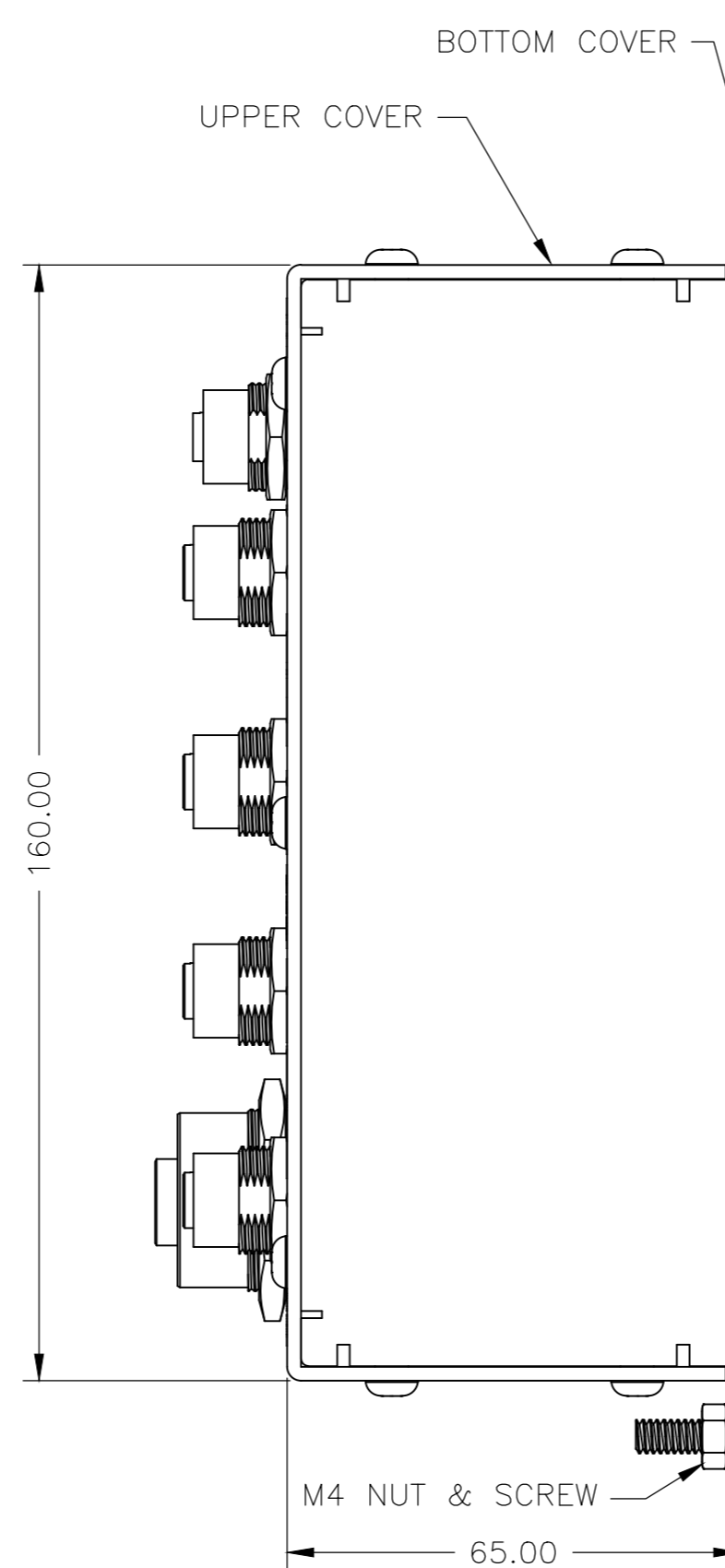
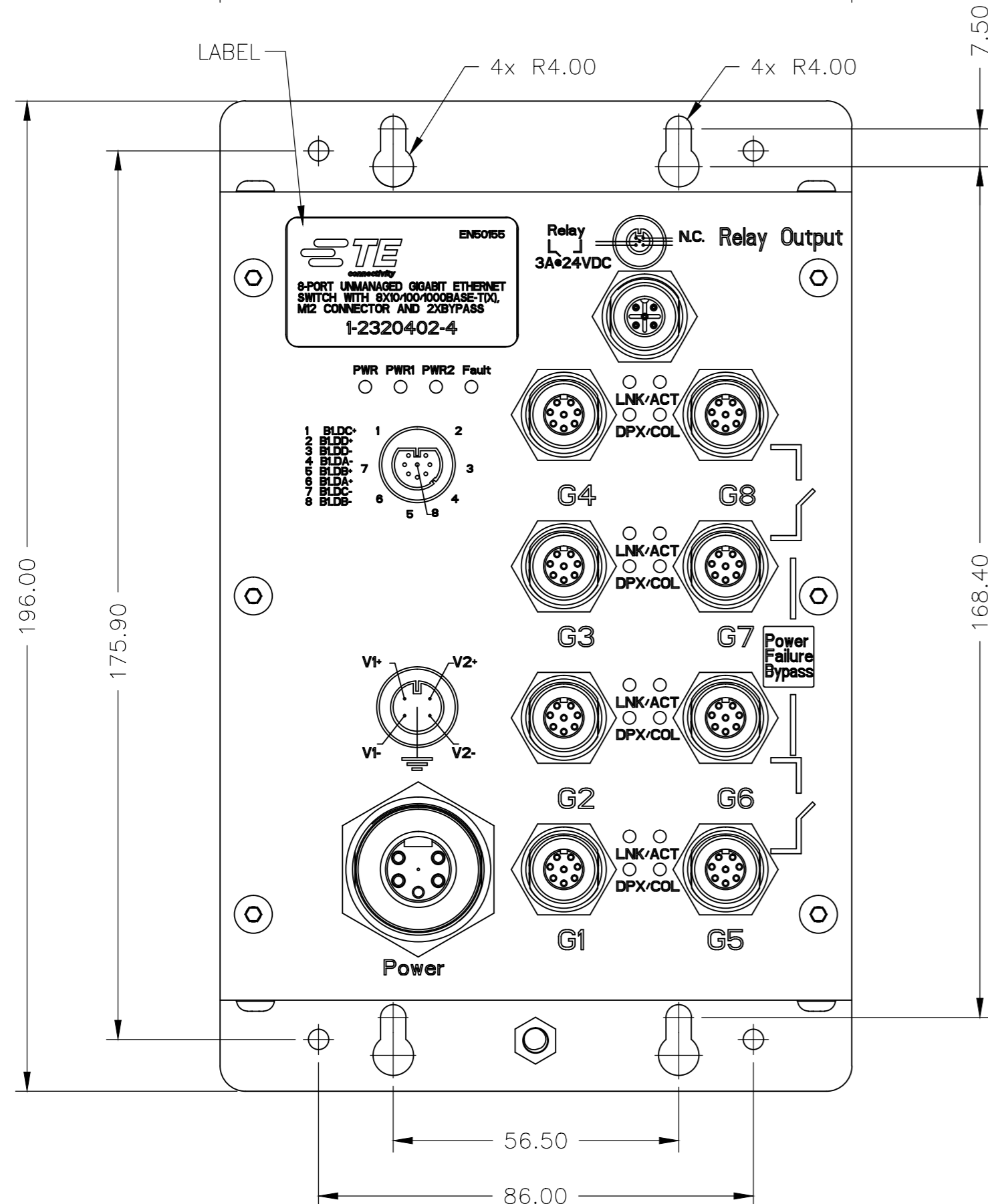


THIS DRAWING IS UNPUBLISHED.		RELEASED FOR PUBLICATION	
© COPYRIGHT - TE Connectivity		ALL RIGHTS RESERVED.	
PROJECT	PRJ-17-000905364		
PART NO.	X-2320402-X		
DESCRIPTION	8-PORT 1GBPS SWITCH		
CUSTOMER	GENERAL MARKET		

REVISIONS				
P	LTR	DESCRIPTION	DATE	APVD
A		NEW RELEASE	11JUL2017	KK ES



PICTORIAL VIEW



SL.NO.	PART NO.	DESCRIPTION	NO. OF PORTS	POE PORTS	SPEED	BYPASS	INPUT POWER
4	1-2320402-4	EN50155 8-PORT UNMANAGED GIGABIT ETHERNET SWITCH WITH 8X10/100/1000BASE-T(X), M12 CONNECTOR, 12-48VDC INPUT	8	-	10/100/1000 BASE-T(X)	NO	12-48 VDC
3	1-2320402-3	EN50155 8-PORT UNMANAGED GIGABIT ETHERNET SWITCH WITH 8X10/100/1000BASE-T(X), M12 CONNECTOR AND 2XBYPASS INCLUDED, 72-110VDC INPUT	8	-	10/100/1000 BASE-T(X)	2X	72-110 VDC
2	1-2320402-2	EN50155 8-PORT UNMANAGED GIGABIT ETHERNET SWITCH WITH 8X10/100/1000BASE-T(X), M12 CONNECTOR, 72-110VDC INPUT	8	-	10/100/1000 BASE-T(X)	NO	72-110 VDC
1	1-2320402-1	EN50155 8-PORT UNMANAGED GIGABIT ETHERNET SWITCH WITH 8X10/100/1000BASE-T(X), M12 CONNECTOR AND 2XBYPASS INCLUDED, 12-48VDC INPUT	8	-	10/100/1000 BASE-T(X)	2X	12-48 VDC

AVAILABLE MODELS

THIS DRAWING IS A CONTROLLED DOCUMENT.		DWN	05MAY2017	 TE Connectivity	8-PORT 1GBPS SWITCH			
DIMENSIONS: mm		CHK	05MAY2017		NAME			
TOLERANCES UNLESS OTHERWISE SPECIFIED:		APVD	05MAY2017		E STELLINGA			
0 PLC ± - 1 PLC ± - 2 PLC ± - 3 PLC ± - 4 PLC ± - ANGLES ± -		PRODUCT SPEC			RESTRICTED TO			
MATERIAL	FINISH	WEIGHT		SIZE	CAGE CODE	DRAWING NO		
-	-	CUSTOMER DRAWING		A2	00779	C=2320402		
SCALE				NTS	SHEET	1 OF 2	REV	
							A	

THIS DRAWING IS UNPUBLISHED. RELEASED FOR PUBLICATION  
 © COPYRIGHT - TE Connectivity ALL RIGHTS RESERVED.

REVISIONS				
P	LTR	DESCRIPTION	DATE	APVD
-	-	SEE SHEET 1	-	-


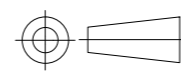
PROJECT	PRJ-17-000905364
PART NO.	X-2320402-X
DESCRIPTION	8-PORT 1GBPS SWITCH
CUSTOMER	GENERAL MARKET

SPECIFICATIONS:				
MODELS	1-2320402-1	1-2320402-2	1-2320402-3	1-2320402-4
POWER INPUT	DUAL DC INPUTS. 12~48VDC, ON 5-PIN M23 CONNECTOR	DUAL DC INPUTS. 72~110VDC, ON 5-PIN M23 CONNECTOR	DUAL DC INPUTS. 72~110VDC, ON 5-PIN M23 CONNECTOR	DUAL DC INPUTS. 12~48VDC, ON 5-PIN M23 CONNECTOR
POWER CONSUMPTION	6.24 WATTS	7.88 WATTS	11.24 WATTS	2.88 WATTS WATTS
PORTS				
10/100/1000BASE-T(X) PORTS IN M12	8 X M12 CONNECTOR (8-PIN A-CODING, BYPASS FUNCTION INCLUDED BY LAST 4 PORTS)	8 X M12 CONNECTOR (8-PIN A-CODING)	8 X M12 CONNECTOR (8-PIN A-CODING, BYPASS FUNCTION INCLUDED BY LAST 4 PORTS)	8 X M12 CONNECTOR (8-PIN A-CODING)
STORAGE TEMPERATURE	-40°C TO 85°C (-40°F TO 185°F)			
OPERATING TEMPERATURE	-40°C TO 75°C (-40°F TO 167°F)			
OPERATING HUMIDITY	5% TO 95% NON-CONDENSING			
REGULATORY APPROVALS				
EMI	FCC Part 15, CISPR (EN55022) class A, EN50155 (EN50121-3-2, EN55011, EN50121-4)			
EMS	EN61000-4-2 (ESD), EN61000-4-3 (RS), EN61000-4-4 (EFT), EN61000-4-5 (Surge), EN61000-4-6 (CS), EN61000-4-8, EN61000-4-11			
SHOCK	IEC60068-2-27, EN61373			
VIBRATION	IEC60068-2-6, EN61373			
FREE FALL	IEC60068-2-32			
ETHERNET STANDARDS	IEEE 802.3 FOR 10BASE-T			
	IEEE 802.3U FOR 100BASE-TX			
	IEEE 802.3AB FOR 1000BASE-T			
	IEEE 802.3X FOR FLOW CONTROL			
MAC TABLE	8K MAC ADDRESSES			
ENCLOSURE	IP-40			
WEIGHT	1007g	1195g,	1235g,	967g,

NOTES:

MAIN FEATURES:

- \* LEADING EN50155-COMPLIANT ETHERNET SWITCH FOR INDUSTRIAL APPLICATIONS, SUCH AS ROLLING STOCK, VEHICLE, AND RAILWAY APPLICATIONS.
- \* SUPPORT DUAL POWER INPUTS FOR POWER REDUNDANCY.
- \* SUPPORT AUTO-NEGOTIATION AND AUTO-MDI/MDI-X.
- \* SUPPORT STORE, FLOW CONTROL AND FORWARD TRANSMISSION.
- \* BUILT-IN 2 SETS OF BYPASS PORTS.
- \* M12 CONNECTORS TO GUARANTEE RELIABLE OPERATION AGAINST ENVIRONMENTAL DISTURBANCES.
- \* RIGID IP-40 HOUSING DESIGN AND WALL MOUNTED.

THIS DRAWING IS A CONTROLLED DOCUMENT.		DWN KIRAN K 05MAY2017	
DIMENSIONS: mm		CHK KIRAN K 05MAY2017	
TOLERANCES UNLESS OTHERWISE SPECIFIED:		APVD E STELLINGA 05MAY2017	NAME 8-PORT 1GBPS SWITCH
		PRODUCT SPEC -	SIZE A2
MATERIAL		APPLICATION SPEC -	CAGE CODE 00779
FINISH		WEIGHT -	DRAWING NO C-2320402
		CUSTOMER DRAWING	RESTRICTED TO -
		SCALE NTS	SHEET 2 OF 2
		REV A	

2320402

## X-ON Electronics

Largest Supplier of Electrical and Electronic Components

*Click to view similar products for [Ethernet Modules](#) category:*

*Click to view products by [TE Connectivity](#) manufacturer:*

Other Similar products are found below :

[TDKEZW3](#) [V23993-USB1029A](#) [100-POE4](#) [I210T1BLK](#) [X520QDA1](#) [BCM84794A1KFSBG](#) [X520DA2OCP](#) [808-38157](#) [7506GX2](#) [TC](#)  
[EXTENDER 2001 ETH-2S](#) [105FX-SC-MDR](#) [110FX2-SC](#) [BCM54291B0IQLEG](#) [7000-P3201-P050150](#) [750-1415](#) [750-1515](#) [750-494](#) [750-](#)  
[495](#) [750-612](#) [750-643](#) [750-940](#) [753-540](#) [753-650/003-000](#) [852-1322](#) [852-1328](#) [852-1812](#) [852-1813](#) [852-1816](#) [LANTICK PE-0-16](#)  
[LANTICK PE-16-0](#) [RBMTXLITE-L4X2.X.X.X.X.](#) [USR-TCP232-T2](#) [2017008](#) [EKI-7708E-4F-AE](#) [EKI-7708E-4FP-AE](#) [EKI-7708G-4FP-AE](#)  
[2352903-2](#) [EGU-0702-SFP-T](#) [SW-125](#) [SW-525](#) [SW-725](#) [1005957](#) [1006191](#) [304TX-N](#) [WIZ107SR\\_TTL](#) [ES-320](#) [TDKEZW5](#) [2003025](#)  
[2003037](#) [2013040](#)