

THIS DRAWING IS UNPUBLISHED. RELEASED FOR PUBLICATION 20  
 © COPYRIGHT 20 BY - ALL RIGHTS RESERVED.

| REVISIONS |     |                           |           |     |      |
|-----------|-----|---------------------------|-----------|-----|------|
| P         | LTR | DESCRIPTION               | DATE      | DWN | APVD |
| A         |     | REVISED PER ECR-18-014960 | 21SEP2018 | SS  | JL   |
| A1        |     | REVISED PER ECR-19-008871 | 13JUN2019 | SR  | DD   |
| A2        |     | REVISED PER ECR-19-009651 | 12JUL2019 | SR  | DD   |
| B         |     | REVISED PER ECR-19-017691 | 19NOV2019 | SB  | DD   |

1 MATERIALS:  
 HOUSING: PBT  
 DIMMING CONTACTS (QTY. 4): COPPER ALLOY  
 LINE VOLTAGE CONTACTS (QTY. 3): COPPER ALLOY  
 GASKET: VINYL/NITRILE FOAM  
 O-RING: SILICONE RUBBER  
 MEMBRANE VENT: PTFE

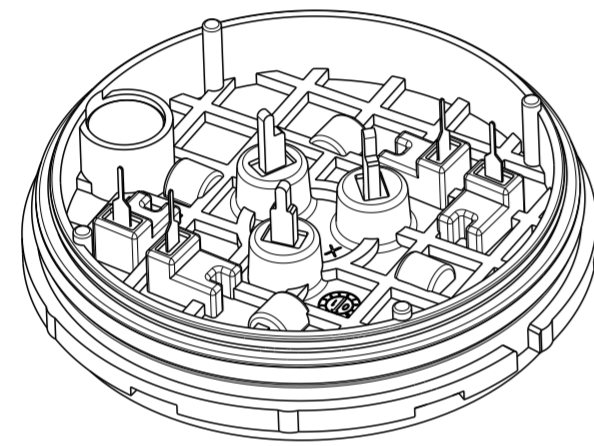
2 FINISH:  
 DIMMING CONTACTS: NICKEL UNDERPLATE ENTIRE  
 CONTACT 0.127 µm MIN THICK. SELECTIVE GOLD PLATE CONTACT  
 MATING AREA (MATING FACE SIDE ONLY) 0.76 µm MIN THICK.  
 MATTE TIN PLATE TAB ON BOTH SIDES 0.30 µm MIN THICK.  
 LINE VOLTAGE CONTACTS: MATTE TIN PLATE

3 MATING INTERFACE PER ANSI C136.41-2013.

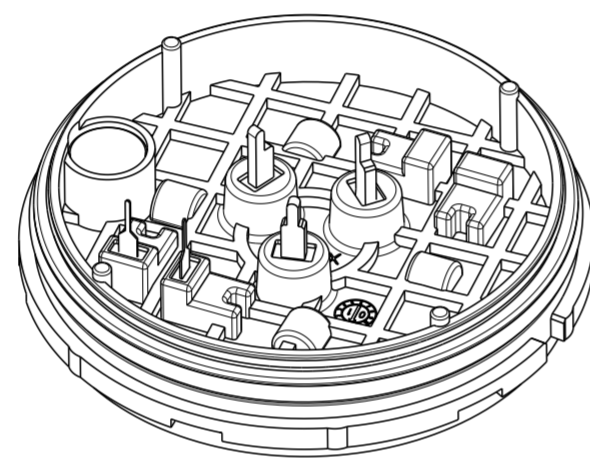
4 ADHESIVE BACKED GASKET SUPPLIED BUT NOT INSTALLED.

5 ADDITIONAL COVERS AND SLEEVES OF VARIOUS HEIGHTS ARE AVAILABLE. CONTACT TE CONNECTIVITY FOR MORE OPTIONS.

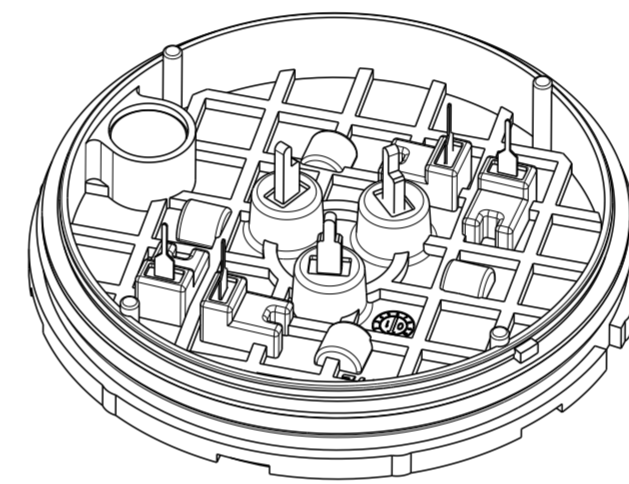
7. THIS PRODUCT HAS NOT COMPLETED VALIDATION TESTING.



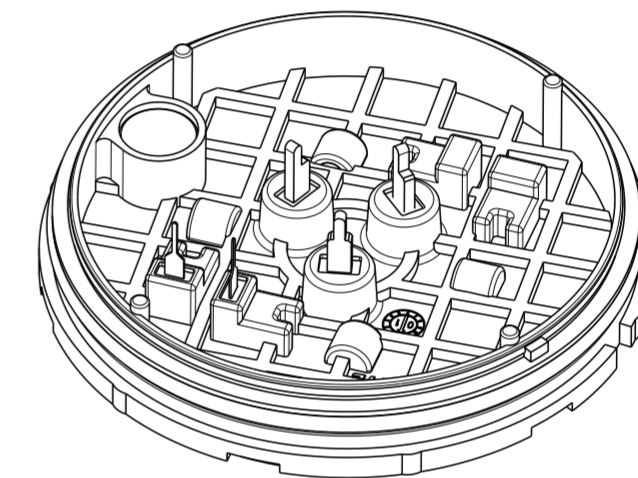
2336396-1 SHOWN



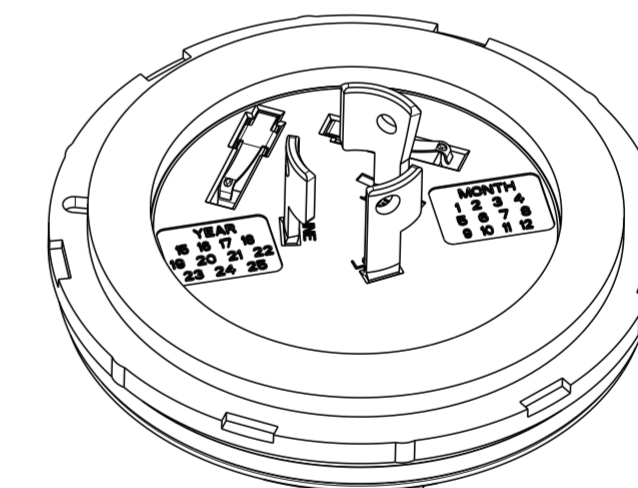
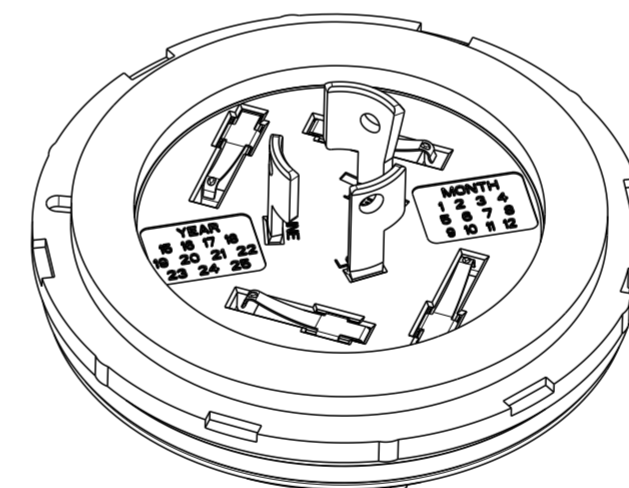
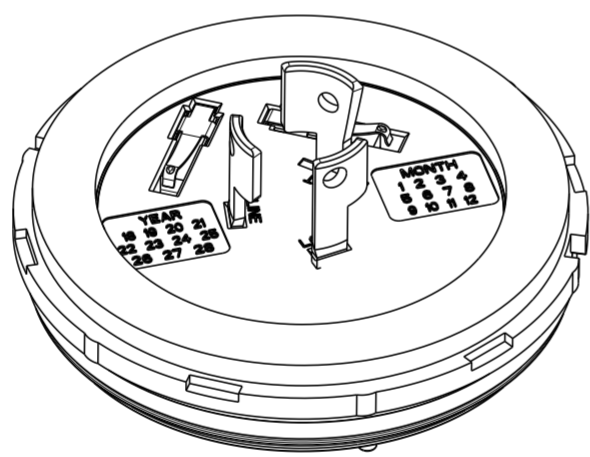
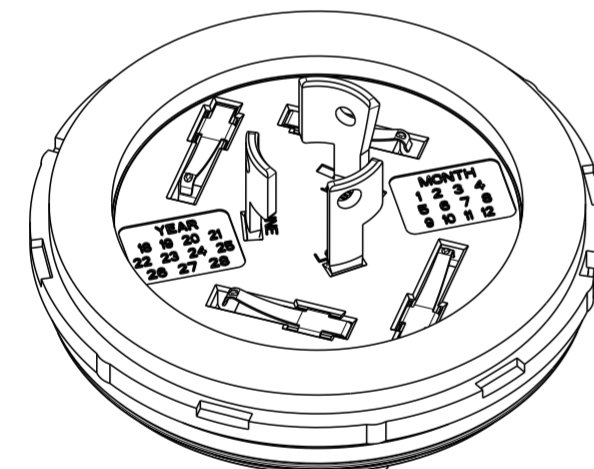
1-2336396-1 SHOWN



2336396-2 SHOWN



1-2336396-2 SHOWN



|                             |                            |                   |       |       |        |        |        |        |                       |                        |        |        |             |
|-----------------------------|----------------------------|-------------------|-------|-------|--------|--------|--------|--------|-----------------------|------------------------|--------|--------|-------------|
| 2213996-X                   | 2306130-X                  | 5                 | 13.04 | 26.20 | Ø82.24 | Ø78.54 | Ø69.80 | Ø70.70 | Ø72.25                | Ø77.53                 | Ø77.74 | Ø81.15 | 1-2336396-2 |
| 2213996-X                   | 2306130-X                  | 7                 | 13.04 | 26.20 | Ø82.24 | Ø78.54 | Ø69.80 | Ø70.70 | Ø72.25                | Ø77.53                 | Ø77.74 | Ø81.15 | 2336396-2   |
| 2213805-X                   | 2213748-X                  | 5                 | 4.35  | 27.45 | Ø77.00 | Ø73.00 | Ø64.50 | Ø65.00 | Ø66.75                | Ø71.23                 | Ø72.00 | Ø76.00 | 1-2336396-1 |
| 2213805-X                   | 2213748-X                  | 7                 | 4.35  | 27.45 | Ø77.00 | Ø73.00 | Ø64.50 | Ø65.00 | Ø66.75                | Ø71.23                 | Ø72.00 | Ø76.00 | 2336396-1   |
| REPRESENTATIVE SLEEVE P/N 5 | REPRESENTATIVE COVER P/N 5 | CONTACT POSITIONS | DIM T | DIM S | DIM Y  | DIM X  | DIM P  | DIM N  | DIM M MAX WITH SLEEVE | DIM M MAX W/OUT SLEEVE | DIM F  | DIM E  | PART NO.    |

THIS DRAWING IS A CONTROLLED DOCUMENT.

DWN: J. SHAFFER 03MAY2018  
 CHK: M. MOSTOLLER 03MAY2018  
 APVD: -

**STE** TE Connectivity

NAME: BASE ASSEMBLY, LIGHT CONTROLLER, SLEEVE COMPATIBLE

PRODUCT SPEC: 108-32125  
 APPLICATION SPEC: 114-32159

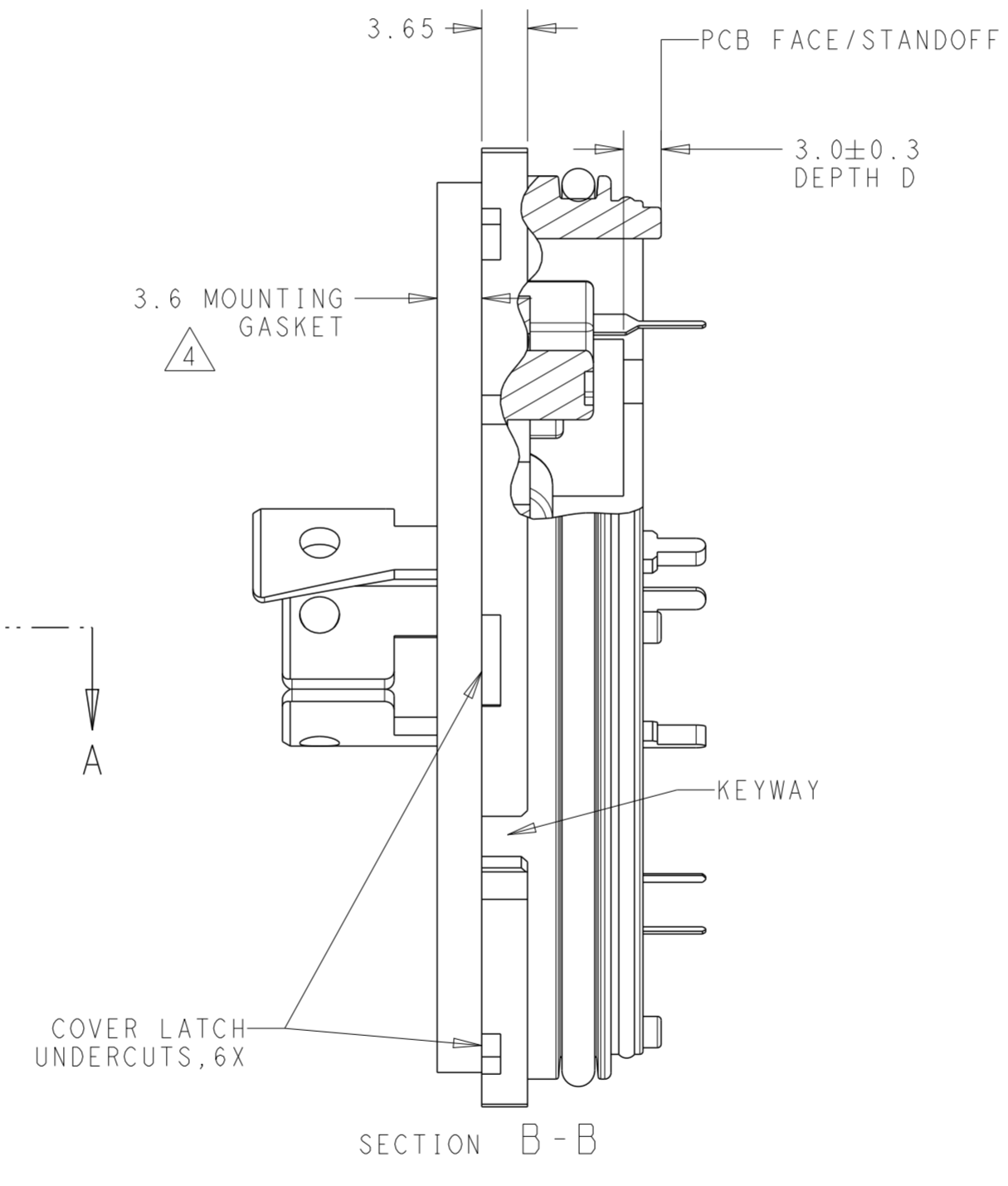
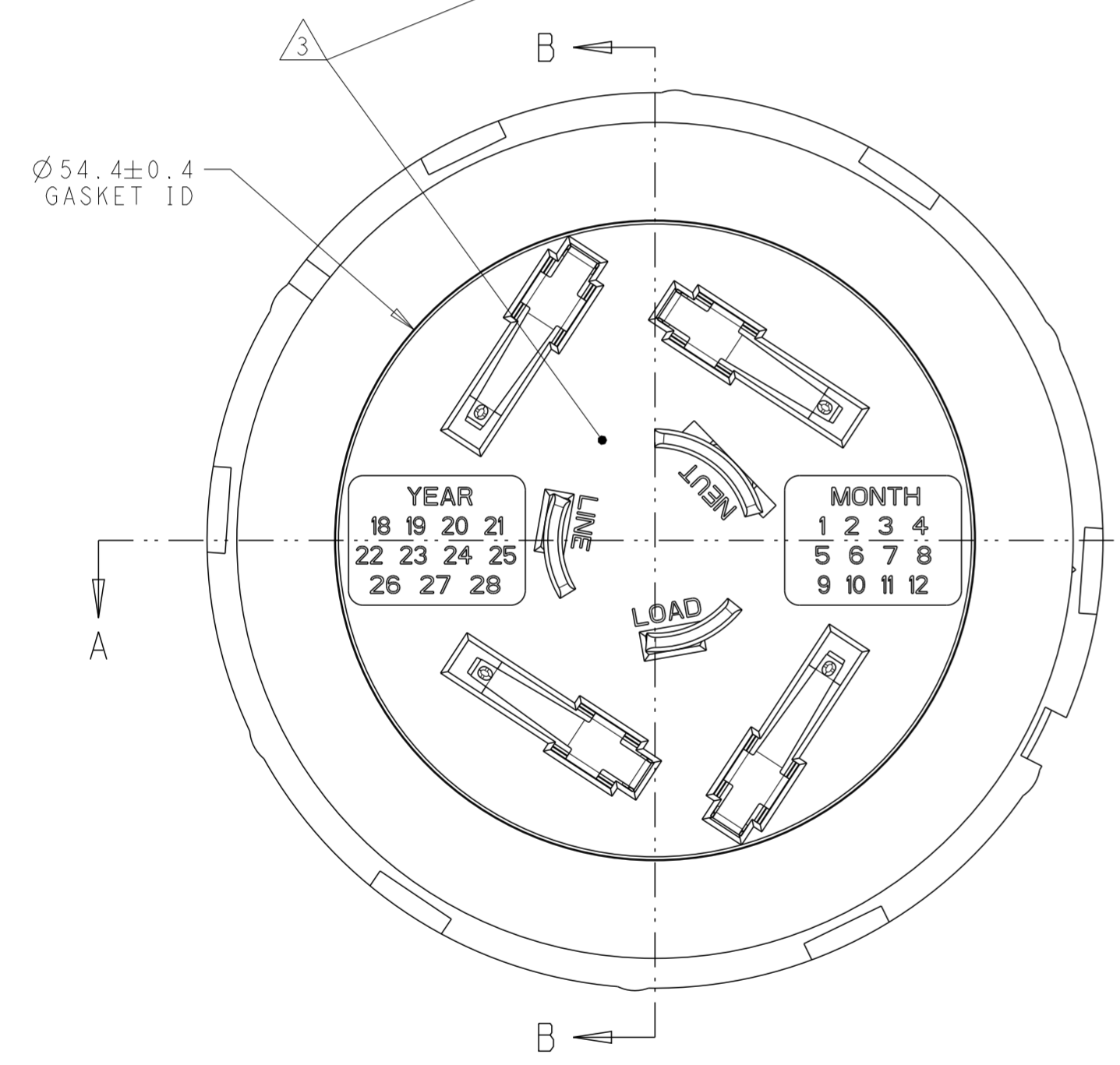
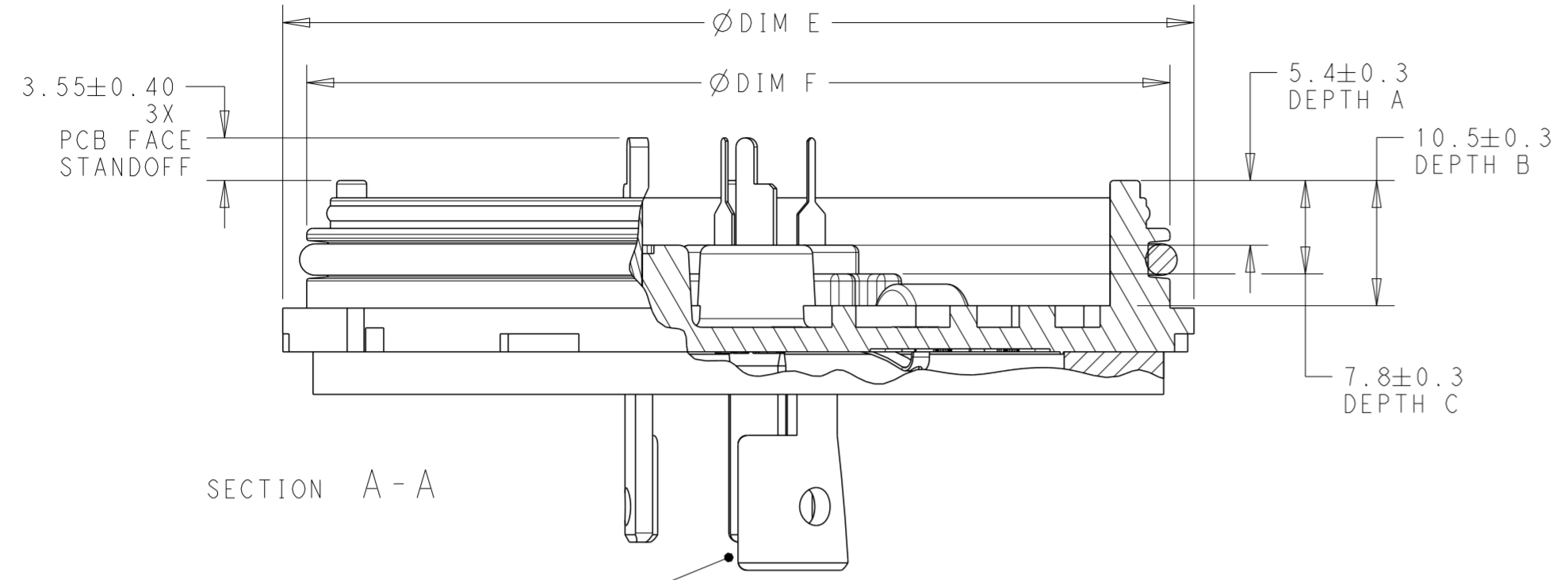
SIZE: A2  
 CAGE CODE: -  
 DRAWING NO: C-2336396

RESTRICTED TO: -

CUSTOMER DRAWING SCALE: 2:1 SHEET: 1 OF 5 REV: B

THIS DRAWING IS UNPUBLISHED. RELEASED FOR PUBLICATION 20  
 © COPYRIGHT 20 BY - ALL RIGHTS RESERVED.

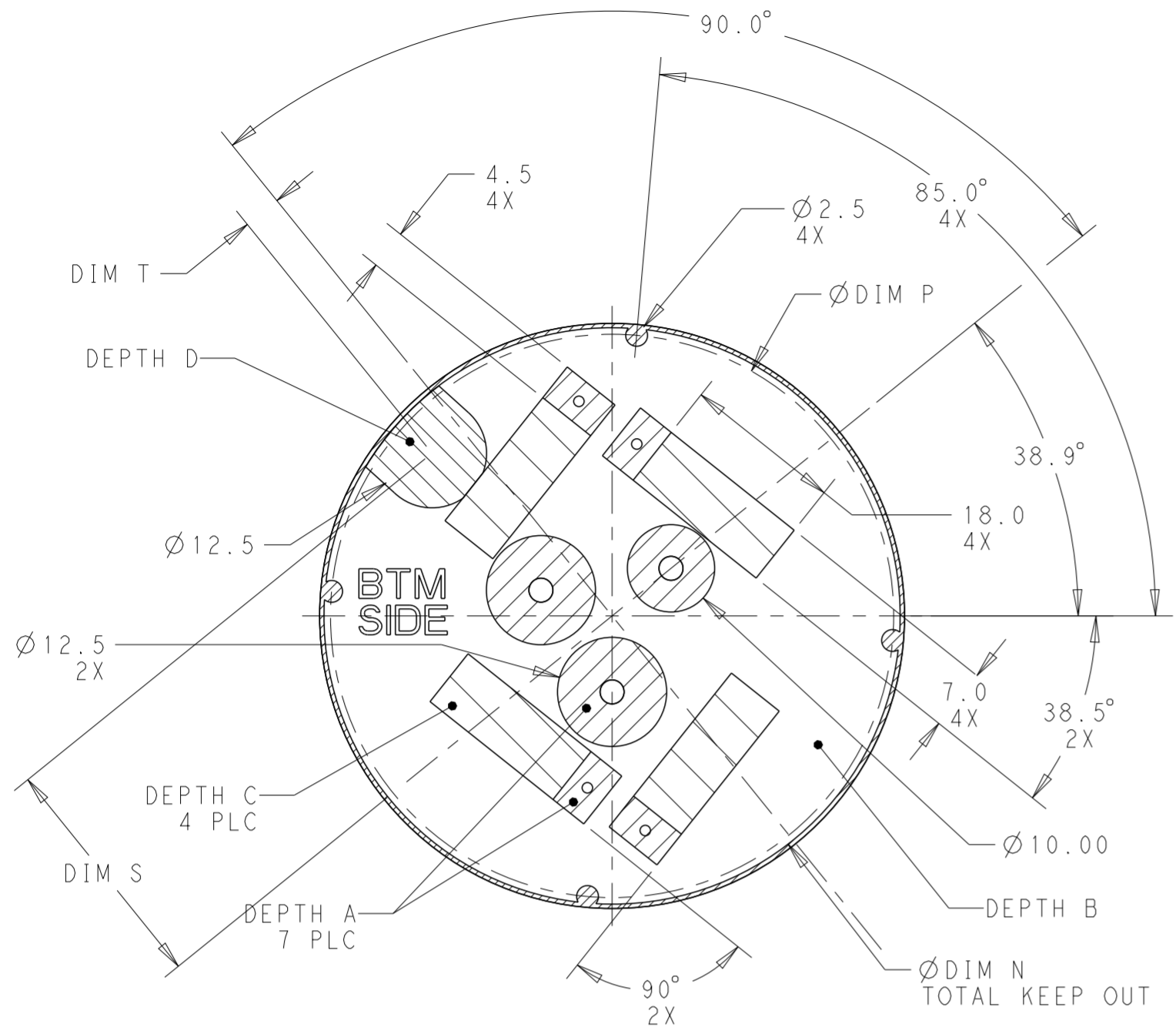
| REVISIONS |     |             |      |      |
|-----------|-----|-------------|------|------|
| P         | LTR | DESCRIPTION | DATE | APVD |
| -         | -   | SEE SHEET 1 | -    | -    |
|           |     |             |      |      |
|           |     |             |      |      |



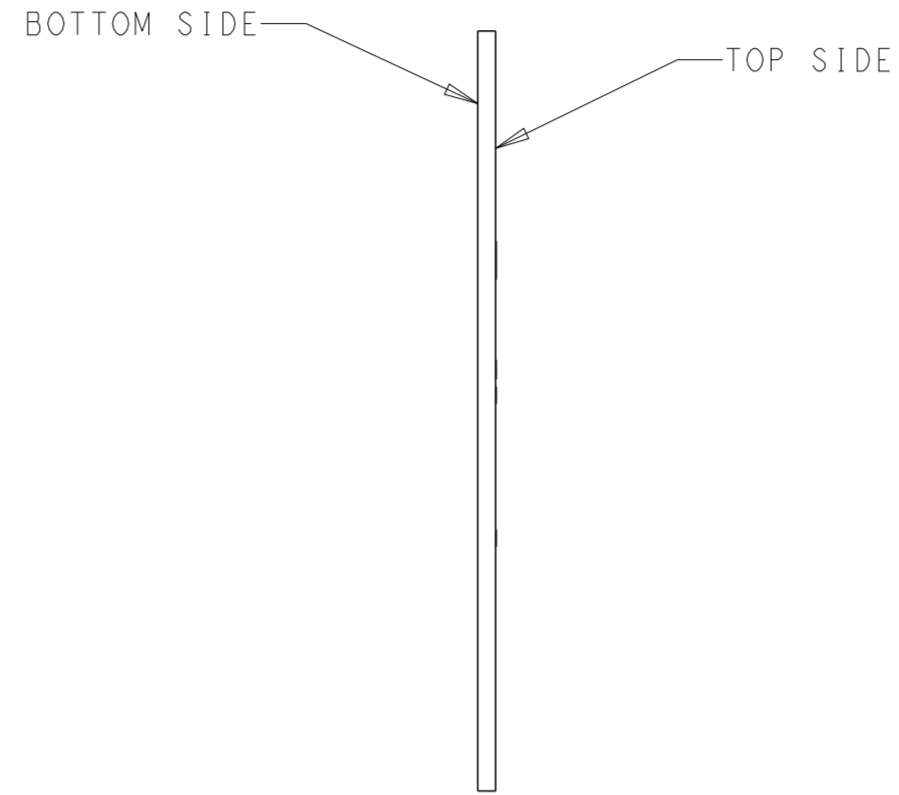
|  |  |  |                 |  |   |
|--|--|--|-----------------|--|---|
| THIS DRAWING IS A CONTROLLED DOCUMENT. |  | DWN<br>J. SHAFFER<br>03MAY2018   | TE Connectivity |  |   |
|  |  | CHK<br>M. MOSTOLLER<br>03MAY2018   |                 |  |   |
| DIMENSIONS:<br>mm                      |  | TOLERANCES UNLESS OTHERWISE SPECIFIED:<br>0 PLC ±<br>1 PLC ±0.2<br>2 PLC ±0.13<br>3 PLC ±<br>4 PLC ±<br>ANGLES ±3°<br>FINISH |                 | APVD<br>-<br>PRODUCT SPEC<br>108-32125<br>APPLICATION SPEC<br>114-32159<br>WEIGHT<br>-<br>CUSTOMER DRAWING | NAME<br>BASE ASSEMBLY,<br>LIGHT CONTROLLER,<br>SLEEVE COMPATIBLE<br>SIZE<br>A2<br>CAGE CODE<br>-<br>DRAWING NO<br>C-2336396<br>RESTRICTED TO<br>- |
|  |  | SCALE 2:1  |                 | SHEET 2 OF 5   | REV B   |

THIS DRAWING IS UNPUBLISHED. RELEASED FOR PUBLICATION 20  
 © COPYRIGHT 20 BY - ALL RIGHTS RESERVED.

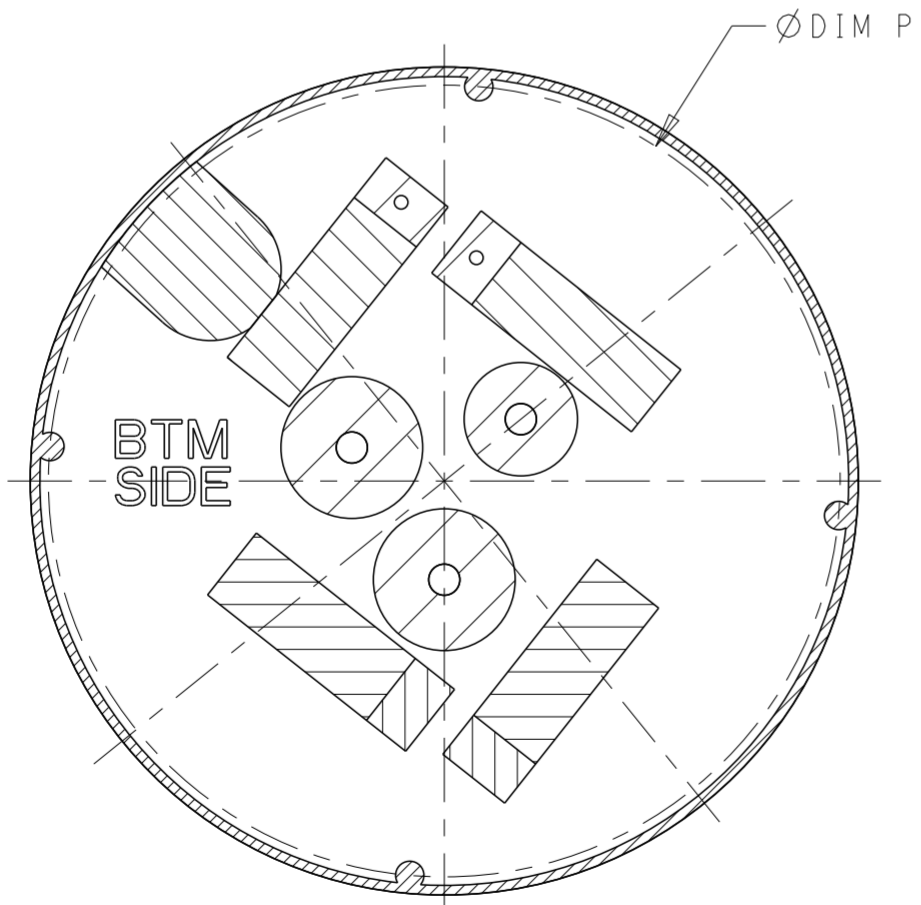
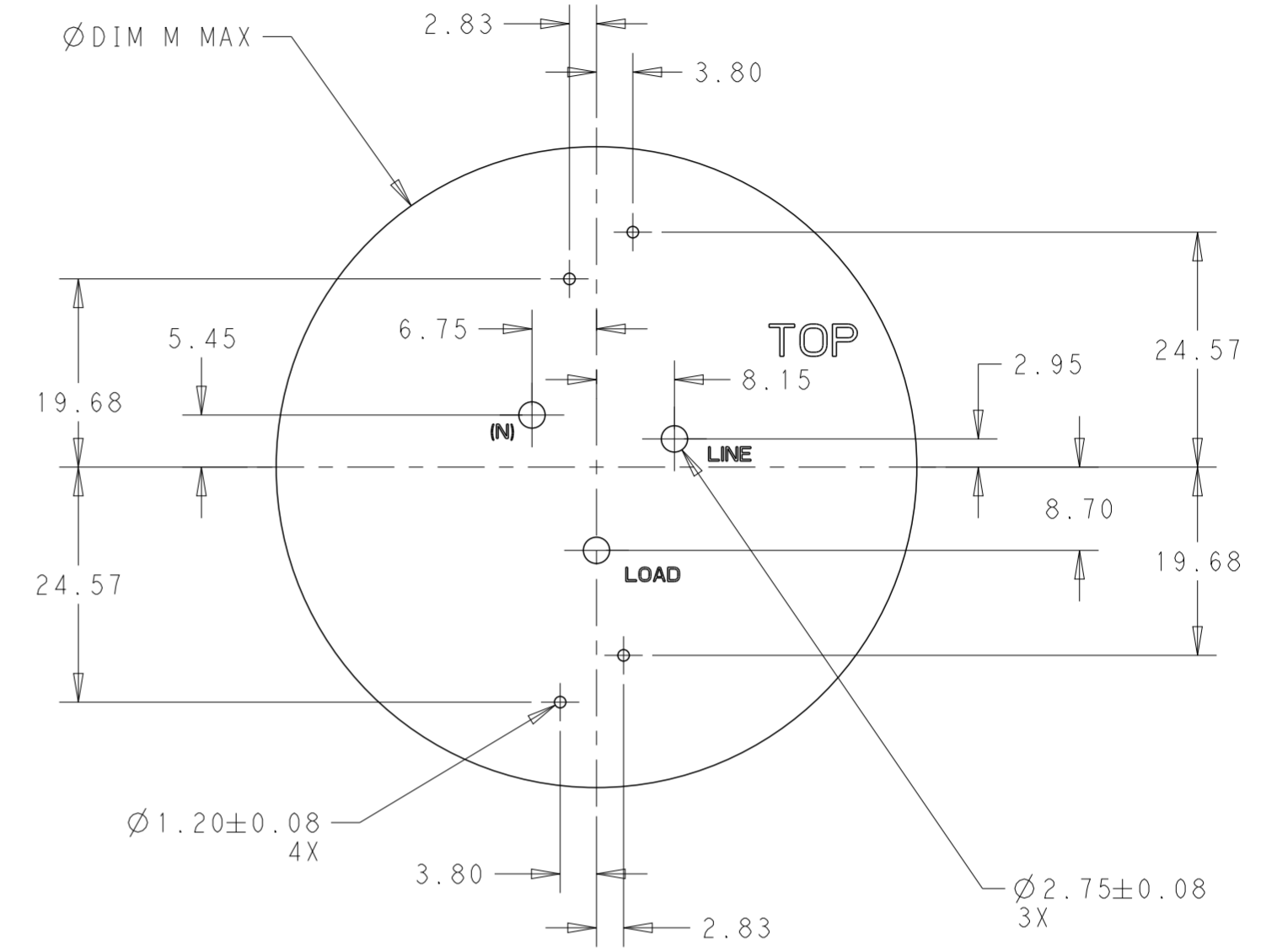
| REVISIONS |     |             |      |      |
|-----------|-----|-------------|------|------|
| P         | LTR | DESCRIPTION | DATE | APVD |
| -         | -   | SEE SHEET 1 | -    | -    |
|           |     |             |      |      |
|           |     |             |      |      |



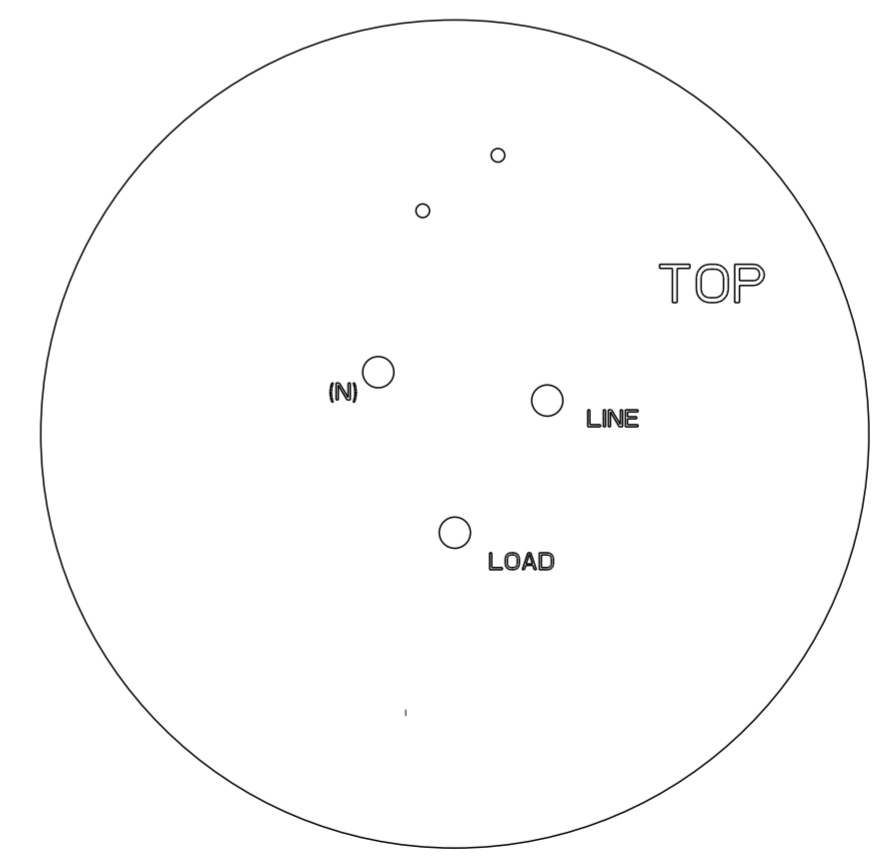
COMPONENT KEEP OUT AREAS  
 2336396-1 AND 2336396-2




RECOMMENDED PCB  
 SCALE 3:2

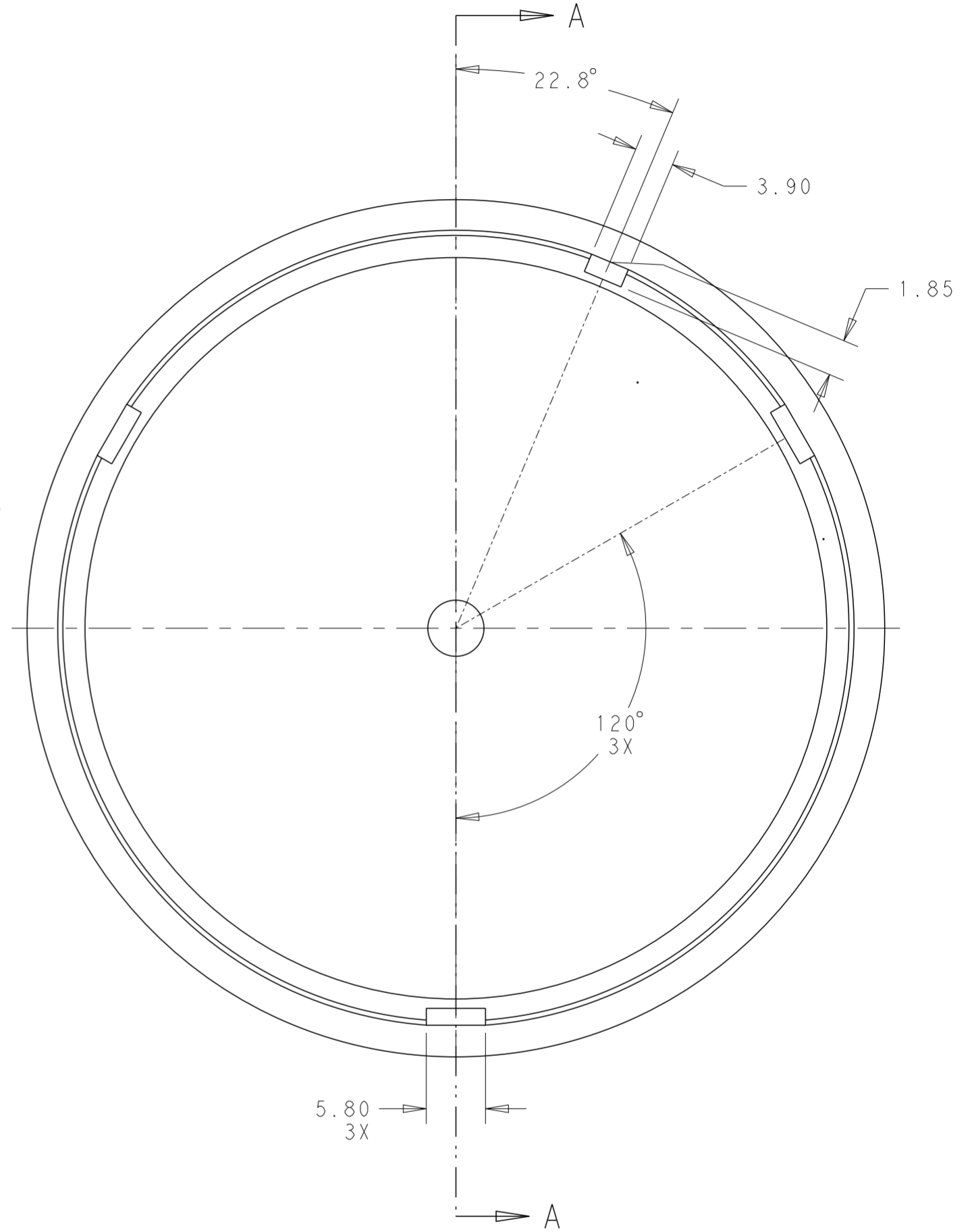
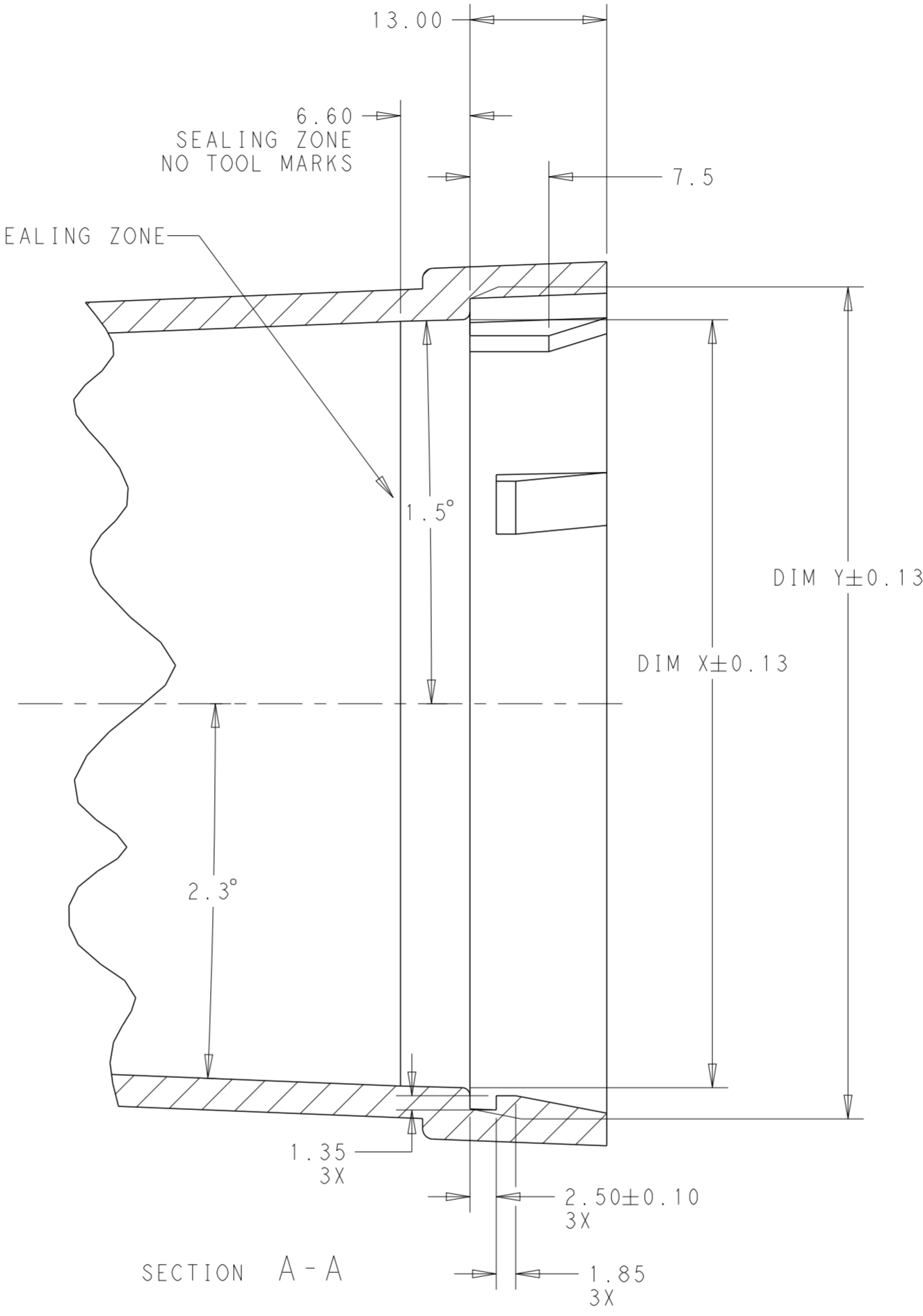
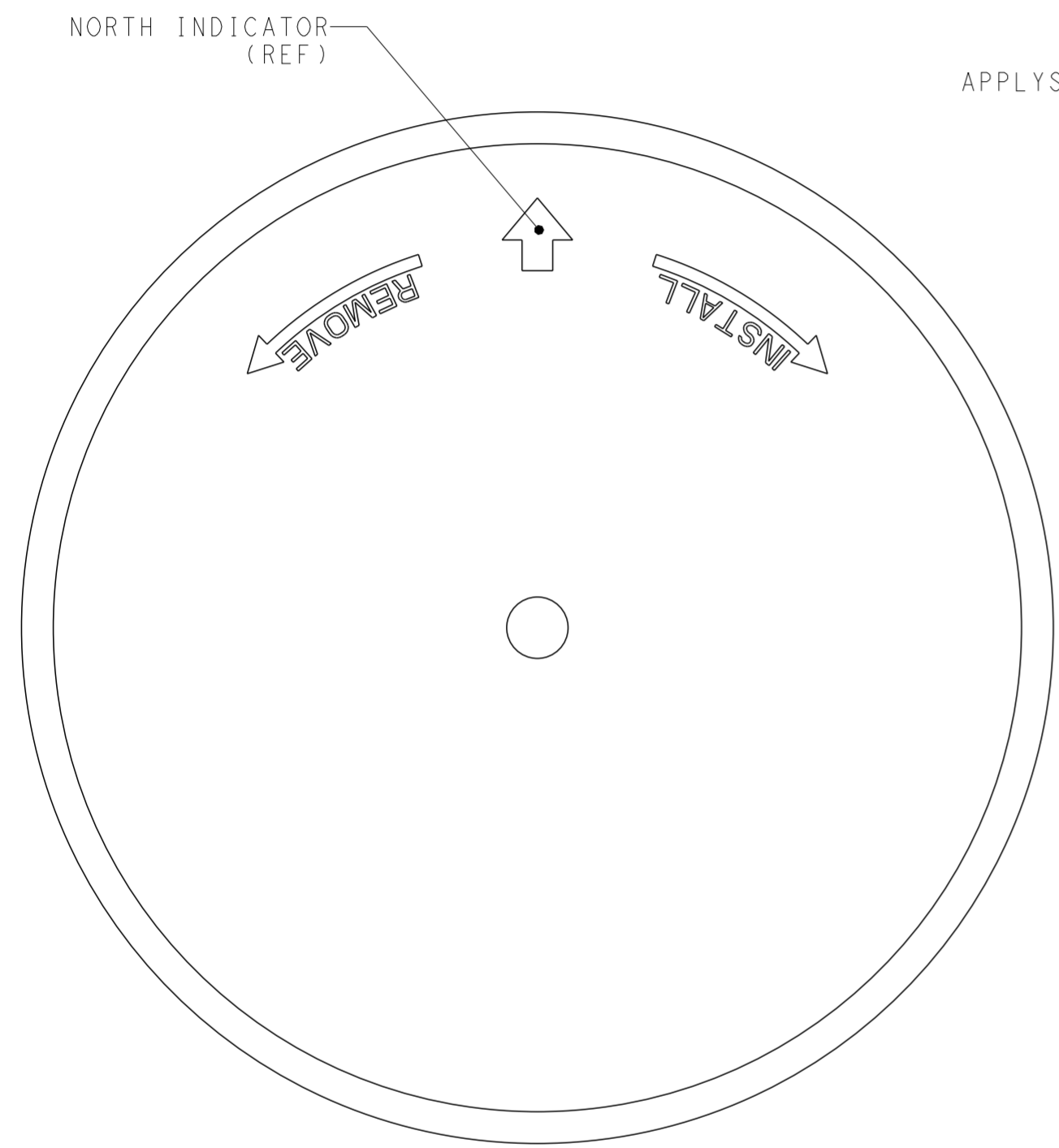


COMPONENT KEEP OUT AREAS  
 1-2336396-1 AND 1-2336396-2  
 SAME AS  
 2336396-1 AND 2336396-2  
 EXCEPT WHERE SHOWN




|  |  |                                  |   |                 |                |                          |                    |
|--|--|----------------------------------|---|-----------------|----------------|--------------------------|--------------------|
| THIS DRAWING IS A CONTROLLED DOCUMENT. |  | DWN<br>J. SHAFFER<br>03MAY2018   |  TE Connectivity |                 |                |                          |                    |
|  |  | CHK<br>M. MOSTOLLER<br>03MAY2018 |   |                 |                |                          |                    |
| DIMENSIONS:                            | TOLERANCES UNLESS OTHERWISE SPECIFIED:                     | APVD<br>-                        | NAME<br>BASE ASSEMBLY,<br>LIGHT CONTROLLER,<br>SLEEVE COMPATIBLE                                      | SIZE<br>A2      | CAGE CODE<br>- | DRAWING NO.<br>C-2336396 | RESTRICTED TO<br>- |
| mm                                     | 0 PLC ±<br>1 PLC ±0.2<br>2 PLC ±0.13<br>3 PLC ±<br>4 PLC ± | PRODUCT SPEC<br>108-32125        | SCALE<br>2:1  | SHEET<br>3 OF 5 | REV<br>B       |                          |                    |
| MATERIAL<br>-                          | FINISH<br>-  | APPLICATION SPEC<br>114-32159    | CUSTOMER DRAWING  |                 |                |                          |                    |

| REVISIONS |     |             |      |      |
|-----------|-----|-------------|------|------|
| P         | LTR | DESCRIPTION | DATE | APVD |
| -         | -   | SEE SHEET 1 | -    | -    |
|           |     |             |      |      |
|           |     |             |      |      |

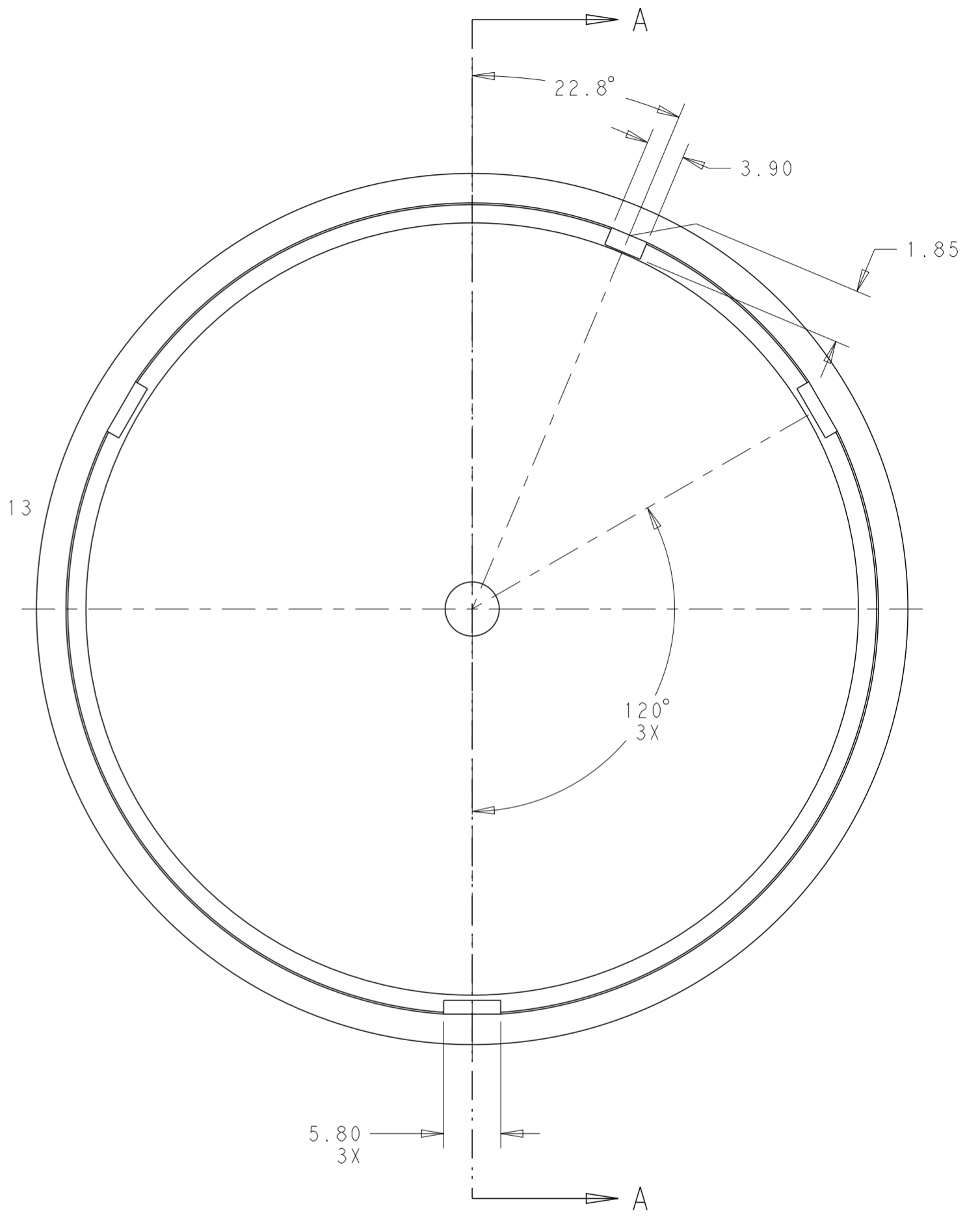
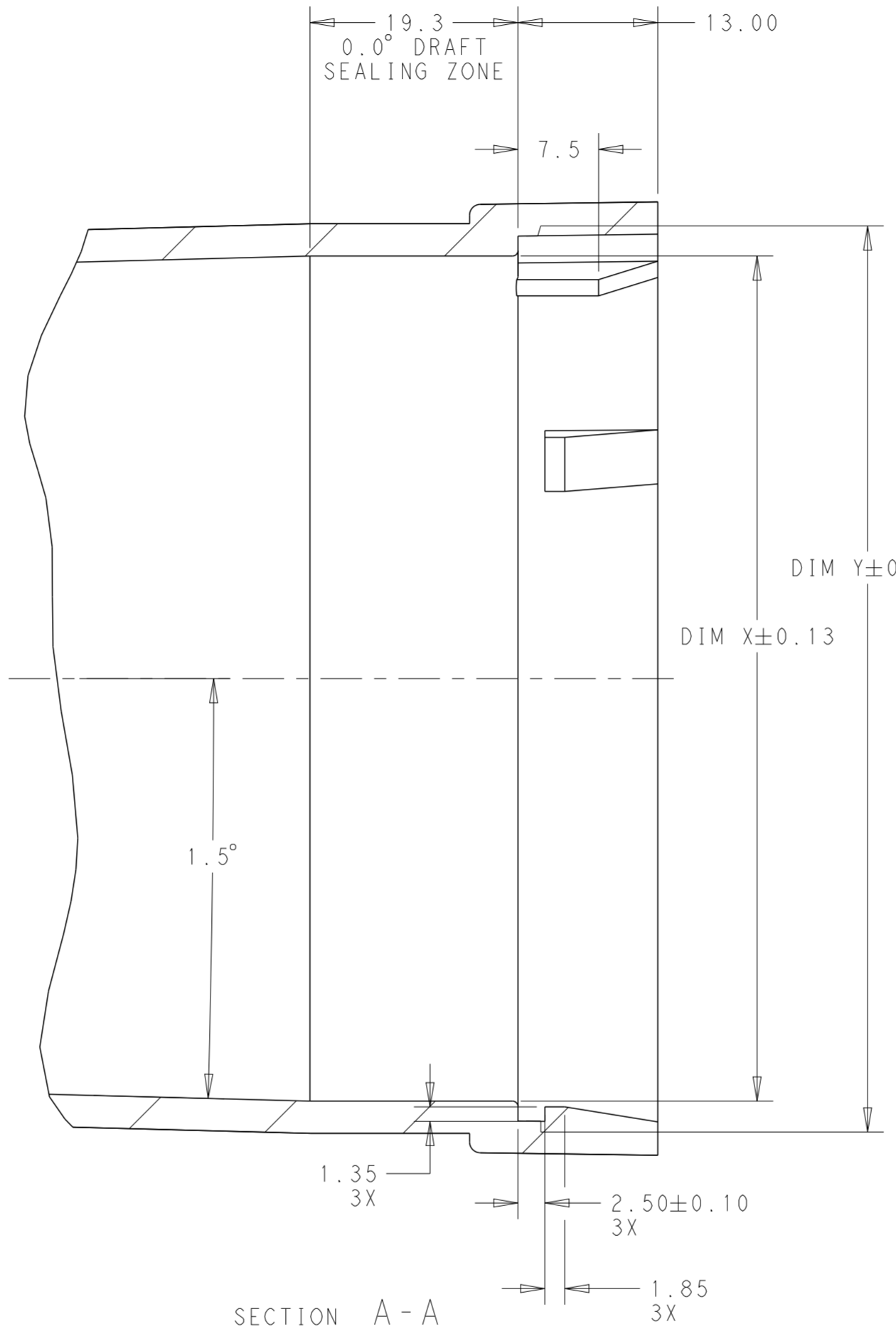
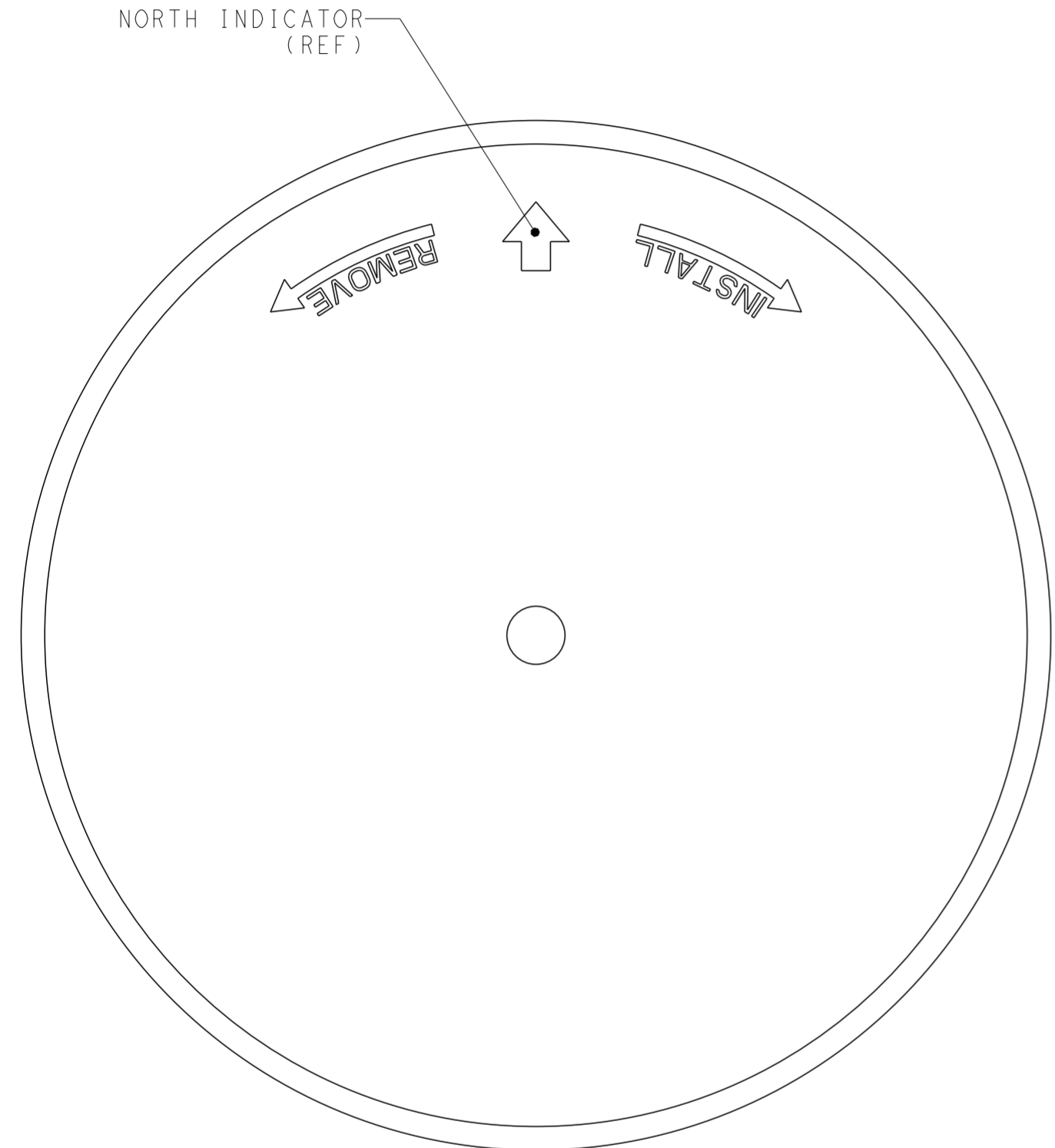


MATING COVER DIMENSIONS  
 FOR  
 76MM DIAMETER BASES  
 (2336396-1, 1-2336396-1)

|  |  |  |   |  |              |
|--|--|--|---|--|--------------|
| THIS DRAWING IS A CONTROLLED DOCUMENT. |  | DWN<br>J. SHAFFER<br>03MAY2018   |  TE Connectivity |  |              |
|  |  | CHK<br>M. MOSTOLLER<br>03MAY2018   |   |  |              |
| DIMENSIONS:<br>mm                      |  | TOLERANCES UNLESS OTHERWISE SPECIFIED:<br>0 PLC ±<br>1 PLC ±0.2<br>2 PLC ±0.13<br>3 PLC ±<br>4 PLC ±<br>ANGLES ±3°<br>FINISH |   | NAME<br>BASE ASSEMBLY,<br>LIGHT CONTROLLER,<br>SLEEVE COMPATIBLE               |              |
| MATERIAL<br>-<br>-                     |  | PRODUCT SPEC<br>108-32125<br>APPLICATION SPEC<br>114-32159<br>WEIGHT<br>-  |   | SIZE<br>A2<br>CAGE CODE<br>-<br>DRAWING NO.<br>C-2336396<br>RESTRICTED TO<br>- |              |
|  |  | CUSTOMER DRAWING   |   | SCALE 2:1  | SHEET 4 OF 5 |
|  |  |  |   | REV B  |              |

THIS DRAWING IS UNPUBLISHED. RELEASED FOR PUBLICATION 20  
 © COPYRIGHT 20 BY - ALL RIGHTS RESERVED.

| REVISIONS |     |             |      |      |
|-----------|-----|-------------|------|------|
| P         | LTR | DESCRIPTION | DATE | APVD |
| -         | -   | SEE SHEET 1 | -    | -    |
|           |     |             |      |      |
|           |     |             |      |      |



MATING COVER DIMENSIONS  
 FOR  
 81MM DIAMETER BASES  
 (2336396-2, 1-2336396-2)

|  |  |  |                 |  |
|--|--|--|-----------------|--|
| THIS DRAWING IS A CONTROLLED DOCUMENT. |  | DWN<br>J. SHAFFER<br>03MAY2018   | TE Connectivity |  |
|  |  | CHK<br>M. MOSTOLLER<br>03MAY2018   |                 |  |
| DIMENSIONS:<br>mm                      |  | TOLERANCES UNLESS OTHERWISE SPECIFIED:<br>0 PLC ±<br>1 PLC ±0.2<br>2 PLC ±0.13<br>3 PLC ±<br>4 PLC ±<br>ANGLES ±3°<br>FINISH |                 | NAME<br>BASE ASSEMBLY,<br>LIGHT CONTROLLER,<br>SLEEVE COMPATIBLE               |
| MATERIAL<br>-<br>-                     |  | PRODUCT SPEC<br>108-32125<br>APPLICATION SPEC<br>114-32159<br>WEIGHT<br>-  |                 | SIZE<br>A2<br>CAGE CODE<br>-<br>DRAWING NO.<br>C-2336396<br>RESTRICTED TO<br>- |
|  |  | CUSTOMER DRAWING   |                 | SCALE 2:1<br>SHEET 5 OF 5<br>REV B   |

## X-ON Electronics

Largest Supplier of Electrical and Electronic Components

*Click to view similar products for [LED Lighting Fixture Accessories](#) category:*

*Click to view products by [TE Connectivity](#) manufacturer:*

Other Similar products are found below :

[XVBC081](#) [1-2315539-1](#) [2306129-1](#) [180997-0001](#) [1-2213996-1](#) [4821](#) [2702312](#) [4775](#) [5012](#) [5014](#) [1301130007](#) [1301120097](#) [1301120099](#)  
[1301120101](#) [1301120114](#) [1301120153](#) [1301120154](#) [1301120157](#) [1301120174](#) [1301120110](#) [1301120137](#) [1301120130](#) [1301860719](#)  
[1301120131](#) [1301120144](#) [1301120196](#) [1301850471](#) [2702313](#) [2702315](#) [2702316](#) [2702493](#) [2702494](#) [PLD E 400-ME SM](#) [XVBC030](#)  
[XVBC14](#) [XVBC21](#) [2213730-1](#) [VFTBCSN1002FT](#) [VFTBCSP0102FT](#) [VFTJCSN0402FT](#) [VFTPCSN1010FT](#) [VFTPCSP0110FT](#) [XVBC00](#)  
[XVBC020](#) [1-2311664-1](#) [2702492](#) [2213871-2](#) [2306132-1](#) [2213805-1](#) [1-2306133-1](#)