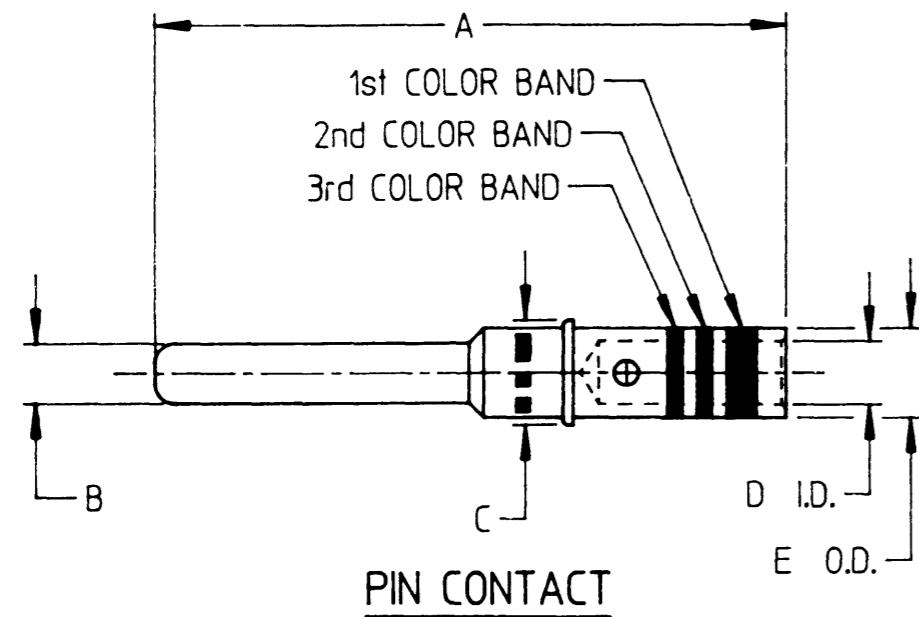
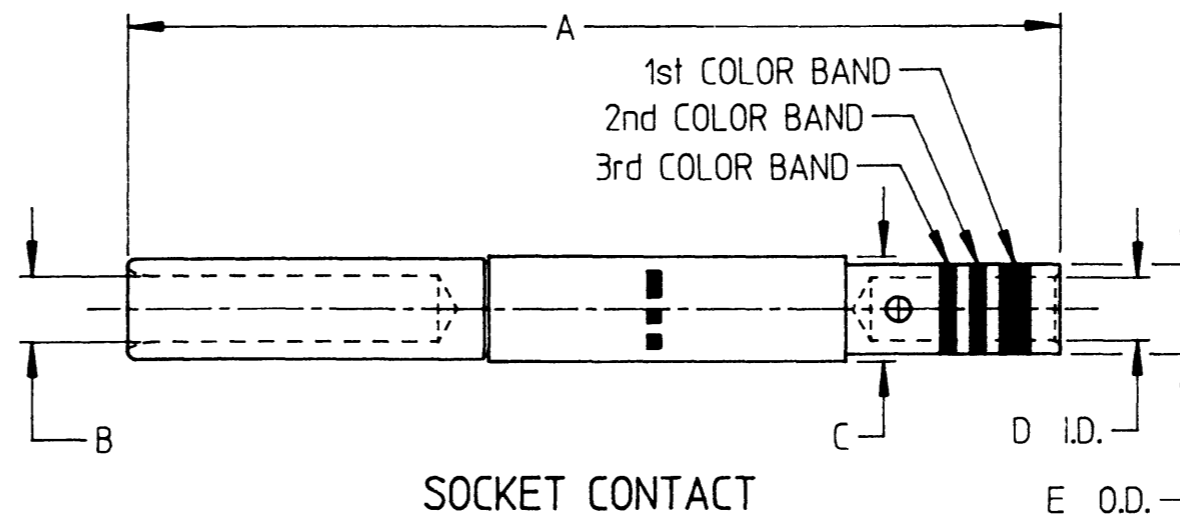


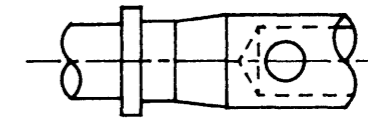
C	12341-** AND 12343-**		REVISIONS	
	REV	DESCRIPTION	DATE	APPROVED
	C	REVISED PER E.O. C1020	10-2-92	P



PIN CONTACT



SOCKET CONTACT



WIRE BARREL CONFIGURATION

12341-23
12343-23
CONTACTS ONLY

DEUTSCH PART NO.	MILITARY PART NO.	COLOR BANDS			SIZE	TYPE	WIRE GAGE RANGE	STRIP LENGTH ±.030	POSITIONER	INS/REM TOOL	WEIGHT	A MAX.	B DIA.	C MAX.	D MIN.	E MAX.
		1st	2nd	3rd												
12341-23	MIL-C-29600/24-610	BLUE	BROWN	BLACK	23	PIN	22 THRU 28	.192	M22520/2-13	M81969/16-04	.00023	.650	.0275/.0260	.058	.033	.050
12343-23	MIL-C-29600/23-606	BLUE	BLACK	BLUE	23	SOCKET	22 THRU 28	.192	M22520/2-16	M81969/16-04	.00057	.955	.031/.029	.058	.033	.050
12341-20	MIL-C-29600/24-611	BLUE	BROWN	BROWN	20	PIN	20 THRU 24	.232	M22520/2-14	M81969/16-01	.00034	.650	.041/.039	.079	.042	.063
12343-20	MIL-C-29600/23-607	BLUE	BLACK	VIOLET	20	SOCKET	20 THRU 24	.232	M22520/2-17	M81969/16-01	.00102	.955	.044/.042	.079	.042	.063
12341-16	MIL-C-29600/24-612	BLUE	BROWN	RED	16	PIN	16 THRU 20	.232	M22520/2-15	M81969/16-02	.00090	.650	.063/.061	.111	.062	.094
12343-16	MIL-C-29600/23-608	BLUE	BLACK	GREY	16	SOCKET	16 THRU 20	.232	M22520/2-18	M81969/16-02	.00190	.955	.068/.065	.111	.062	.094
12341-12	————	NONE	YELLOW	YELLOW	12	PIN	12 AND 14	.266	M22520/1-09	M81969/16-03	.00231	.680	.095/.093	.172	.097	.153
12343-12	————	NONE	YELLOW	YELLOW	12	SOCKET	12 AND 14	.266	M22520/1-10	M81969/16-03	.00517	.970	.100/.097	.172	.097	.153

5. FOR TERMINATION OF SIZE 23 THRU 16 CONTACTS, USE M22520/2-01 CRIMP TOOL WITH APPROPRIATE POSITIONER PER TAB BLOCK. FOR SIZE 12 CONTACTS, USE M22520/1-01 CRIMP TOOL WITH APPROPRIATE POSITIONER.

4. ** IN PART NUMBER INDICATES CONTACT SIZE.

3. MATERIAL: SOCKET BODY - COPPER ALLOY PER MIL-C-39029, COMPOSITION A. SOCKET HOOD - STAINLESS STEEL

2. FINISH: DEUTSCH ALLOY OVER NICKEL PER QQ-N-290.

1. DIMENSIONS ARE IN INCHES UNLESS OTHERWISE SPECIFIED.

NOTE:

SIGNATURE & DATE	
DR	R. GROSS 3-25-92
CHK	J. POWELL 4-15-92
PE	R. GROSS 3-25-92
APPD	
SCALE	NONE
WT	————

CONTACT, PIN AND SOCKET

CRIMP TYPE

SIZE 23 THRU 12 FOR DG123
81511 INSERT TYPE CONNECTOR

ENVELOPE

CP	————	MATL CODE	————
DEUTSCH ENGINEERED CONNECTING DEVICES Municipal Airport Banning, California			
B	12341-** AND 12343-**		
	DWG SIZE	CODE 11139	SHEET 1 OF 1

C:\ANEX-14E2L

X-ON Electronics

Largest Supplier of Electrical and Electronic Components

Click to view similar products for [Automotive Connectors](#) category:

Click to view products by [TE Connectivity](#) manufacturer:

Other Similar products are found below :

[003-018-000](#) [600858](#) [60403001](#) [60993906-B](#) [60993913-B](#) [629515004020001](#) [M83723/71R1808N L/C](#) [M902-2131](#) [M902-2161](#) [M902-2344](#)
[72.330.1035.1](#) [73.353.4028.0](#) [F118010](#) [F119300-B](#) [F132210](#) [F166900](#) [F180100](#) [F258300](#) [F258300-B](#) [F294300-B](#) [F339100](#) [F339700](#)
[F358300-B](#) [F374110](#) [F407400](#) [F412210](#) [F444110](#) [F487000](#) [F495100](#) [F500900-B](#) [F509500B-B](#) [770444-1](#) [827153-1](#) [881735-1](#)
[8N1515-32-24P](#) [9-1326729-8](#) [925467-1](#) [925474-1](#) [928905-1](#) [936398-2](#) [964562-4](#) [964731-2](#) [968782-1](#) [GT17SA-8DS-HU](#) [GT17VS-10DP-](#)
[5.2CF](#) [98315-0001](#) [98315-0010](#) [98891-1012](#) [98895-2014](#) [98936-1039](#)